

## 2019 Japanese bicycle production, import and export

### 1. Preface

The purpose of this report is to show the Japanese bicycle market trend through comprehensive investigation of the Japanese bicycle production, import and export. First, the production of the domestic bicycle manufacturers will be clarified using Ministry of Economy, Trade and Industry (METI) Current Production Statistics, and total production activities including shipment, inventories and time series trend will be explained. Second, due to the current big share of import bicycles in the Japanese bicycle market, bicycle import will be investigated by categories and by time series using Ministry of Finance Japan (MOF) Trade Statistics, and general bicycle market trend will be grasped. Then, comprehensive Japanese bicycle market trend including bicycle production becomes clear. Finally, Japanese bicycle export which is now mostly used bicycle export will be briefly referenced.

In 2019, both total unit production and total value production increase when compared to the previous year; however, total unit production is the fourteenth in the last fifteen years. On the contrary, value production is the highest in the last fifteen years. As to import, even though total unit slightly increases when compared to 2018, 2019 total unit import is the fourteenth in the last fifteen years. Total value import in 2019 decreases when compared to the previous year and is the eleventh in the last fifteen years. As a result, the 2019 domestic unit volume which consists of production units and import units is 7,123,799 units, slight increase from 2018 which was the lowest in the last fifteen years and is the fourteenth in this period.

### 2. Japanese bicycle production

#### 2 – 1 Outline of 2019 bicycle production

According to Ministry of Economy, Trade and Industry (METI) Current Production Statistics Survey, Japanese complete bicycle production in 2019 is 884,078 units, and JPY 56,573,095 thousand. Table 1 shows that total unit production increases 2.8%, and total production value also increases 4.7%, compared to the previous year. Average production unit value in 2019 is up 1.8% from JPY 62,840 in 2018 to JPY 63,991 in 2019.

Table 1 Japanese bicycle production in 2019 compared to the previous year

	Total Units	Total Production Value (JPY thousand)	Average Unit Value (JPY)
2019	884,078	56,573,095	63,991
2018	859,850	54,033,271	62,840
Variance	24,228	2,539,824	1,151
Variance%	2.8%	4.7%	1.8%

Source : Ministry of Economy, Trade and Industry (METI) Current Production Statistics Survey  
(2018 figure is revised, 2019 figure is based on the final edition)  
Japan Bicycle Promotion Institute Processing and Analysis  
Due to round off, Total may not match.

Table 2 shows the detail by product category of Japanese bicycle production during the 2019 compared to 2018. Unit production of “Light bicycles” decreases when compared to the

previous year; however, value production of this type increases. “Electric power assist” and “Miscellaneous” show both unit and value increase.

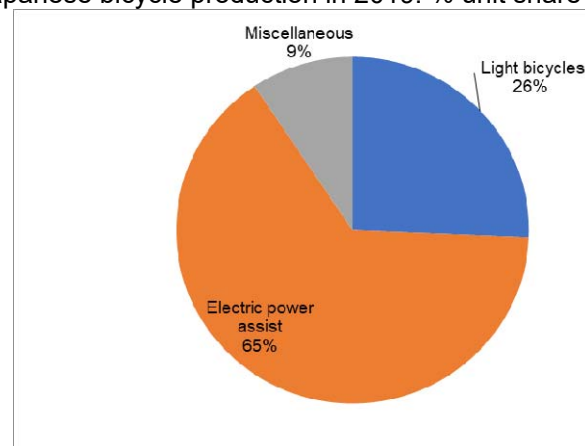
Table 2 Production by category: 2019 compared to 2018

Category	2019		2018		Variance			
	units	Value (JPY thousand)	units	Value (JPY thousand)	units	%	Value (JPY thousand)	%
Light bicycles	226,743	6,249,062	230,049	6,137,610	-3,306	-1.4	111,452	1.8
Electric power assist	574,537	48,465,266	551,920	46,157,970	22,617	4.1	2,307,296	5.0
Miscellaneous	82,798	1,858,767	77,881	1,737,691	4,917	6.3	121,076	7.0
<b>Total</b>	<b>884,078</b>	<b>56,573,095</b>	<b>859,850</b>	<b>54,033,271</b>	<b>24,228</b>	<b>2.8</b>	<b>2,539,824</b>	<b>4.7</b>

Source : Ministry of Economy, Trade and Industry (METI) Current Production Statistics Survey  
 (2018 figure is revised, 2019 figure is based on the final edition)  
 Japan Bicycle Promotion Institute Processing and Analysis  
 Due to round off, Total may not match.

Chart A shows a graphic presentation of 2019 Japanese bicycle unit production share by category based on Table 2. “Electric power assist” captures 65% share, and “Light bicycles” follows capturing 26% share.

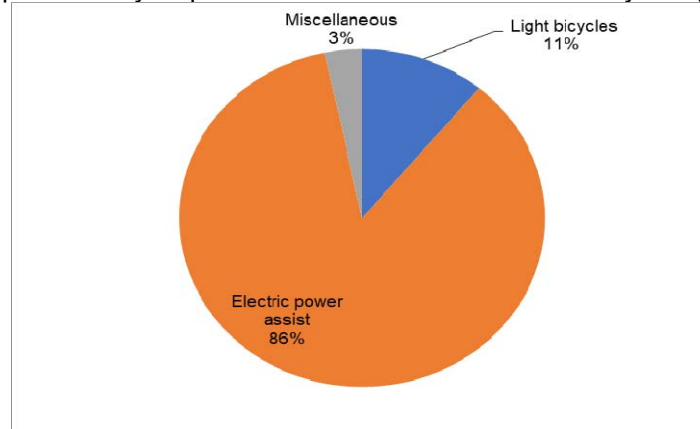
Chart A  
 Japanese bicycle production in 2019: % unit share by category



Source : Ministry of Economy, Trade and Industry (METI) Current Production Statistics Survey  
 Japan Bicycle Promotion Institute Processing and Analysis

Chart B shows a graphic presentation of 2019 Japanese bicycle production value share by category also based on Table 2. “Electric power assist” captures 86% share.

Chart B  
Japanese bicycle production in 2019: % value share by category



Source : Ministry of Economy, Trade and Industry (METI) Current Production Statistics Survey  
Japan Bicycle Promotion Institute Processing and Analysis

Table 3 shows average production unit value by product category in 2019 compared to 2018. All categories go up.

Table 3 Average Production Unit Value by category in 2019 compared to 2018

Category	2019 Average Production Unit Value (JPY)	2018 Average Production Unit Value (JPY)	Variance (JPY)	Variance (%)
Light bicycles	27,560	26,680	881	3.3
Electric power assist	84,355	83,632	724	0.9
Miscellaneous	22,449	22,312	137	0.6
<b>Total</b>	<b>63,991</b>	<b>62,840</b>	<b>1,151</b>	<b>1.8</b>

Source : Ministry of Economy, Trade and Industry (METI) Current Production Statistics Survey  
(2018 figure is revised, 2019 figure is based on the final edition)  
Japan Bicycle Promotion Institute Processing and Analysis  
Due to round off, Total may not match.

Table 4 shows production units, total value, and average unit value of “Electric power assist bicycles” by month. From July, unit production has started to increase when compared to the same month of the previous year; on the other hand, average unit value started to go down from August compared to the same month of 2018. All unit production, production value and average unit value in 2019 show up compared to those of 2018.

**Table 4**  
Production of "Electric power assist bicycles" in 2019 by month compared to 2018

	2019			2018			Variance of unit production	Variance of production value (JPY thousand)	Variance of average unit value (JPY)
	Unit production	Production value (JPY thousand)	Average unit value (JPY)	Unit production	Production value (JPY thousand)	Average unit value (JPY)			
January	45,863	4,143,089	90,336	46,507	3,774,633	81,163	-644	368,456	9,174
February	52,657	4,730,903	89,844	54,734	4,613,710	84,293	-2,077	117,193	5,550
March	59,799	4,950,984	82,794	60,143	4,706,270	78,251	-344	244,714	4,542
April	51,476	4,230,362	82,181	48,737	3,679,771	75,503	2,739	550,591	6,679
May	46,409	4,017,825	86,574	48,223	3,962,331	82,167	-1,814	55,494	4,407
June	38,373	3,208,779	83,621	46,618	3,843,110	82,438	-8,245	-634,331	1,182
July	44,116	3,724,531	84,426	42,540	3,516,122	82,654	1,576	208,409	1,771
August	38,424	3,265,004	84,973	35,490	3,047,239	85,862	2,934	217,765	-889
September	39,868	3,051,821	76,548	37,865	3,235,929	85,460	2,003	-184,108	-8,911
October	49,906	4,060,130	81,356	37,740	3,348,787	88,733	12,166	711,343	-7,378
November	55,132	4,442,608	80,581	44,429	3,953,226	88,979	10,703	489,382	-8,397
December	52,514	4,639,230	88,343	48,894	4,476,842	91,562	3,620	162,388	-3,219
<b>YTD</b>	<b>574,537</b>	<b>48,465,266</b>	<b>84,355</b>	<b>551,920</b>	<b>46,157,970</b>	<b>83,632</b>	<b>22,617</b>	<b>2,307,296</b>	<b>724</b>

Source : Ministry of Economy, Trade and Industry (METI) Current Production Statistics Survey  
(2018 figure is revised, 2019 figure is based on the final edition)  
Japan Bicycle Promotion Institute Processing and Analysis  
Due to round off, Total may not match.

## 2 – 2 Comprehensive production, shipments and inventory status of the Japanese bicycle manufacturers

Table 5 shows comprehensive manufacturing and sales condition including production, receipts, shipments (sales and others) and month end inventory in 2019 compared to 2018.

**Table 5** Production, shipments and inventory of the Japanese bicycle manufacturers in 2019 compared to 2018

Category	Production		Receipts (Units)	Shipments			Dec. end Inventory (Units)
	Units	Value (JPY thousand)		Sales		Others (Units)	
			Units	Value (JPY thousand)	Units		
2019 Light bicycles	226,743	6,249,062	572,169	602,778	9,595,865	195,021	52,596
2018 Light bicycles	230,049	6,137,610	551,106	578,128	9,399,921	212,673	51,483
Variance %	-1.4	1.8	3.8	4.3	2.1	-8.3	2.2
2019 Electric power assist	574,537	48,465,266	441,130	698,227	57,935,278	330,678	55,087
2018 Electric power assist	551,920	46,157,970	518,722	665,710	54,234,208	384,820	68,325
Variance %	4.1	5.0	-15.0	4.9	6.8	-14.1	-19.4
2019 Miscellaneous	82,798	1,858,767	275,022	326,317	5,763,293	24,060	50,960
2018 Miscellaneous	77,881	1,737,691	289,229	300,786	5,822,373	49,714	43,517
Variance %	6.3	7.0	-4.9	8.5	-1.0	-51.6	17.1
2019 Total	884,078	56,573,095	1,288,321	1,627,322	73,294,436	549,759	158,643
2018 Total	859,850	54,033,271	1,359,057	1,544,624	69,456,502	647,207	163,325
Variance %	2.8	4.7	-5.2	5.4	5.5	-15.1	-2.9

Source : Ministry of Economy, Trade and Industry (METI) Current Production Statistics Survey  
(2018 figure is revised, 2019 figure is based on the final edition)  
Japan Bicycle Promotion Institute Processing and Analysis  
Due to round off, Total may not match.

Total receipts units in 2019 decrease 5.2% compared to 2018. “Light bicycles” increases; however, “Electric power assist” and “Miscellaneous” decrease.

Total units of shipments sales in 2019 increase 5.4% compared to that of 2018. All categories show increase.

Total value of shipments sales up by 5.5% in 2019 compared to 2018. “Light bicycles” and “Electric power assist” show up, but “Miscellaneous” shows down.

Total units of shipments others in 2019 decreases by 15.1% compared to 2018. All three categories show decrease. Shipments others are principally the commissioned products shipped to the consigners.

Total month end inventory in December 2019 is 158,643 units, 2.9% decrease compared to December 2018.

## 2 – 3 Fifteen-year history of bicycle production

Table 6 shows a fifteen-year history of Japanese bicycle production, shipments and December end inventory from 2005 to 2019.

Table 6 Fifteen-year history of bicycle production and shipments:  
December end inventory by Japanese bicycle manufactures

	Production			Shipments			Dec. end Inventory (Units)
	Units	Value*	Average Unit Value (JPY)	Units	Value*	Average Unit Value (JPY)	
2019	884,078	56,573,095	63,991	1,627,322	73,294,436	45,040	158,643
2018	859,850	54,033,271	62,840	1,544,624	69,456,502	44,967	163,325
2017	890,850	55,864,775	62,710	1,619,326	67,982,491	41,982	149,819
2016	939,025	53,493,706	56,967	1,619,165	59,984,751	37,047	156,850
2015	898,095	46,649,982	51,943	1,581,409	53,794,112	34,017	143,061
2014	951,548	47,111	49,510	1,692,522	53,465	31,589	156,625
2013	965,954	42,901	44,413	1,845,784	53,488	28,978	214,539
2012	1,012,314	40,281	39,791	2,662,605	59,321	22,279	231,240
2011	1,101,666	42,786	38,838	3,012,322	65,969	21,900	241,321
2010	1,056,951	36,956	34,965	3,038,180	58,087	19,119	208,140
2009	1,049,469	34,435	32,812	3,098,458	56,256	18,156	219,329
2008	1,094,932	28,846	26,345	3,503,464	53,463	15,260	215,790
2007	1,135,606	25,205	22,195	3,616,043	47,819	13,224	211,533
2006	1,334,512	25,614	19,194	3,924,321	47,485	12,100	214,826
2005	1,926,436	30,741	15,957	5,279,050	57,326	10,859	295,117

Source : Ministry of Economy, Trade and Industry (METI) Current Production Statistics Survey  
(2018 figure is revised)

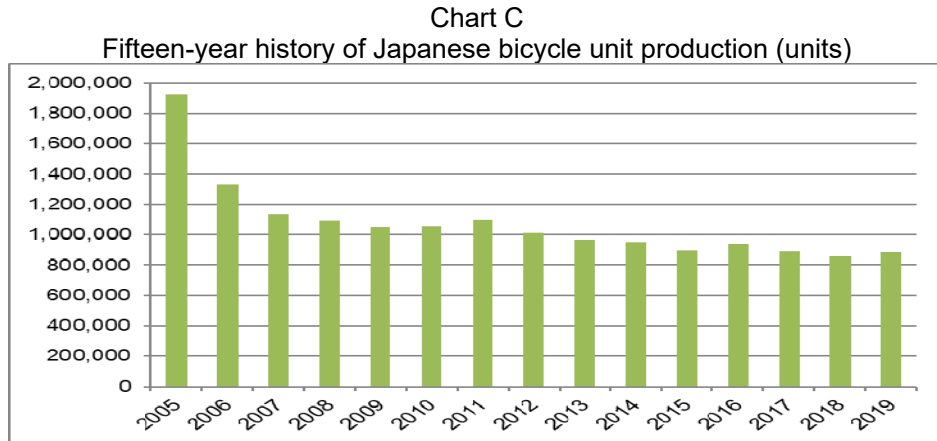
Japan Bicycle Promotion Institute Processing and Analysis

\*Before 2014 JPY million, after 2015 JPY thousand

Production units in 2019 increase compared to 2018; however, the numbers are the fourteenth in the last fifteen years. On the other hand, production value in this period is the highest. With these facts, the average production unit value is the highest in fifteen years. Although shipments units in 2019 are the eleventh in fifteen years, it counts as the highest in the last five years. Shipments value in 2019 is the highest, make the average shipments unit value in 2019 the highest. When compared average production unit value to average shipments unit value, average production unit value has been higher than average

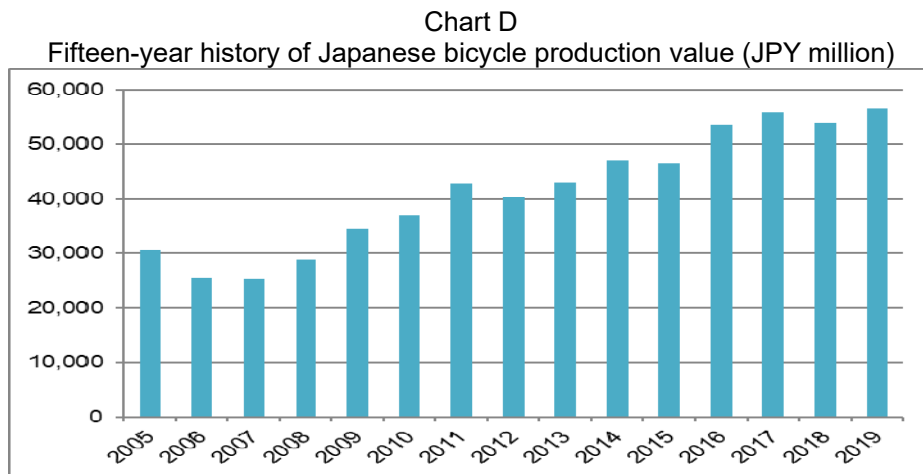
shipments unit value for fifteen consecutive years. Month end inventory of December 2019 is 158,643 units, eleventh in the last fifteen years.

Chart C shows a graphic presentation of this fifteen-year history of Japanese bicycle unit production from 2005 to 2019 based on Table 6. Unit production is stagnated.



Source : Ministry of Economy, Trade and Industry (METI) Current Production Statistics Survey  
Japan Bicycle Promotion Institute Processing and Analysis

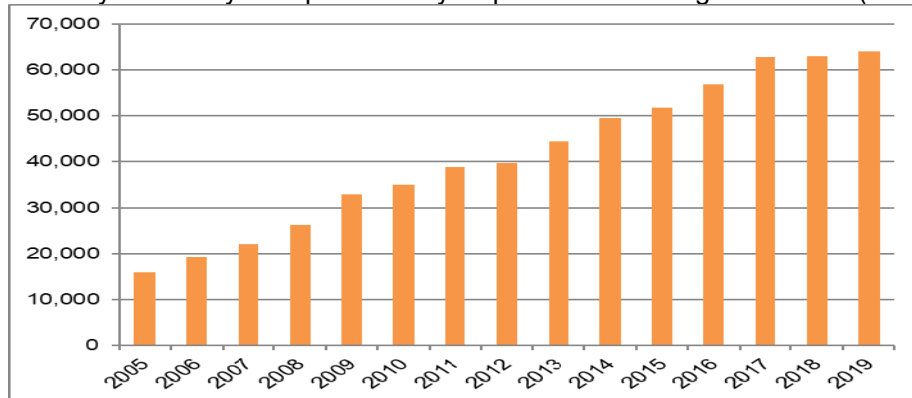
Chart D shows a graphic presentation of the fifteen-year history of Japanese bicycle production value from 2005 to 2019 also based on Table 6.



Source : Ministry of Economy, Trade and Industry (METI) Current Production Statistics Survey  
Japan Bicycle Promotion Institute Processing and Analysis

Chart E shows a graphic presentation of the fifteen-year history of Japanese bicycle production average unit value from 2005 to 2019 also based on Table 6. Production average unit value shows up in trend.

Chart E  
Fifteen-year history of Japanese bicycle production average unit value (JPY)



Source : Ministry of Economy, Trade and Industry (METI) Current Production Statistics Survey  
Japan Bicycle Promotion Institute Processing and Analysis

Table 7 shows the fifteen-year history of the total unit production by month.

Table 7 Fifteen-year history of total production units by month (units)

	Jan. total unit production	Feb. total unit production	March total unit production	April total unit production	May total unit production	June total unit production
2019	76,009	91,011	89,091	74,447	65,676	55,254
2018	78,463	93,312	85,972	76,189	65,486	63,636
2017	79,215	86,276	82,628	74,710	63,706	68,896
2016	82,586	88,069	94,670	81,062	72,186	78,781
2015	78,891	81,242	89,722	75,857	66,218	68,133
2014	84,512	93,408	100,416	83,216	72,121	74,255
2013	79,022	92,667	93,062	88,877	75,906	71,711
2012	96,874	105,350	106,202	95,001	85,528	83,915
2011	86,445	98,081	98,935	107,181	90,542	92,009
2010	93,923	99,424	106,524	98,097	87,516	86,269
2009	96,944	99,314	106,639	94,506	76,287	80,900
2008	97,728	104,912	121,903	96,456	82,921	78,520
2007	99,537	108,413	130,721	108,017	86,039	81,714
2006	124,909	133,470	177,599	128,017	97,944	93,522
2005	186,677	207,574	239,561	197,996	151,547	129,232

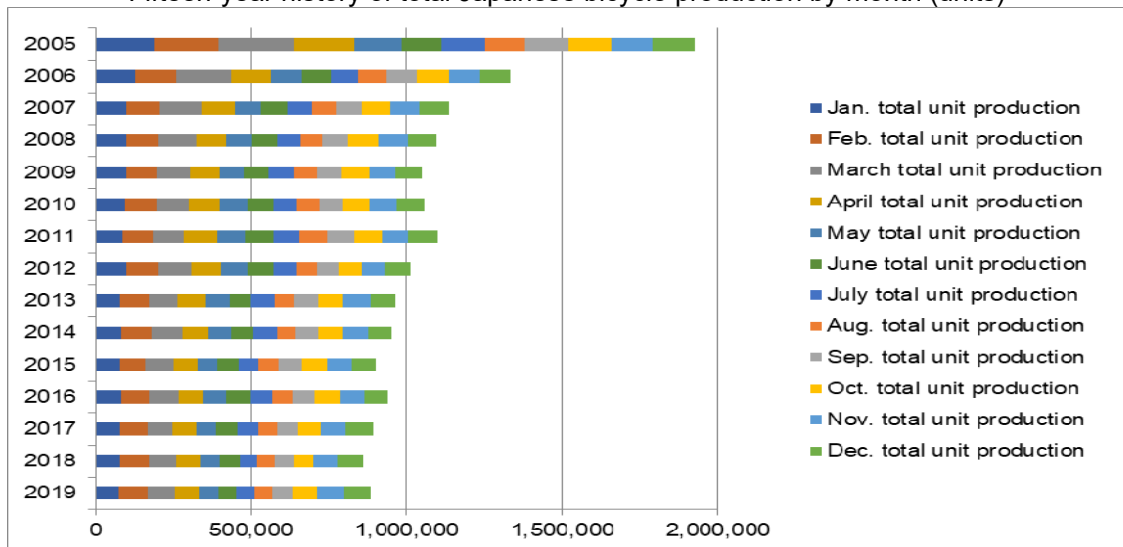
	July total unit production	Aug. total unit production	Sep. total unit production	Oct. total unit production	Nov. total unit production	Dec. total unit production	Total unit production
2019	60,227	54,286	64,805	80,110	89,150	84,012	884,078
2018	57,921	53,703	58,999	65,885	77,279	83,005	859,850
2017	66,260	60,279	67,975	74,071	81,506	85,328	890,850
2016	71,533	64,278	71,472	82,749	76,539	75,100	939,025
2015	64,647	62,481	74,354	82,311	79,144	75,095	898,095
2014	74,981	62,167	68,705	81,603	78,727	77,437	951,548
2013	72,325	66,889	74,392	82,781	84,937	83,385	965,954
2012	74,820	65,045	68,721	73,476	73,695	83,687	1,012,314
2011	83,200	86,553	88,460	86,528	87,020	96,712	1,101,666
2010	75,897	72,056	77,555	82,694	86,498	90,498	1,056,951
2009	80,068	76,206	81,360	88,312	85,103	83,830	1,049,469
2008	76,552	70,488	80,661	95,816	98,763	90,212	1,094,932
2007	79,147	79,509	81,679	91,745	93,341	95,744	1,135,606
2006	87,738	94,248	94,359	105,347	99,636	97,723	1,334,512
2005	138,579	130,081	138,979	135,527	132,069	138,614	1,926,436

Source : Ministry of Economy, Trade and Industry (METI) Current Production Statistics Survey  
(2018 figure is revised)

Japan Bicycle Promotion Institute Processing and Analysis

Chart F shows a graphic presentation of the fifteen-year history of total production units by month based on Table 7. This chart shows that the bicycle production is carried out relatively equally every month.

Chart F  
Fifteen-year history of total Japanese bicycle production by month (units)



Source : Ministry of Economy, Trade and Industry (METI) Current Production Statistics Survey  
Japan Bicycle Promotion Institute Processing and Analysis

Table 8 shows a fifteen-year history of Japanese bicycle unit production by category.



Table 8 Fifteen-year history of Japanese bicycle unit production by categories (unit)

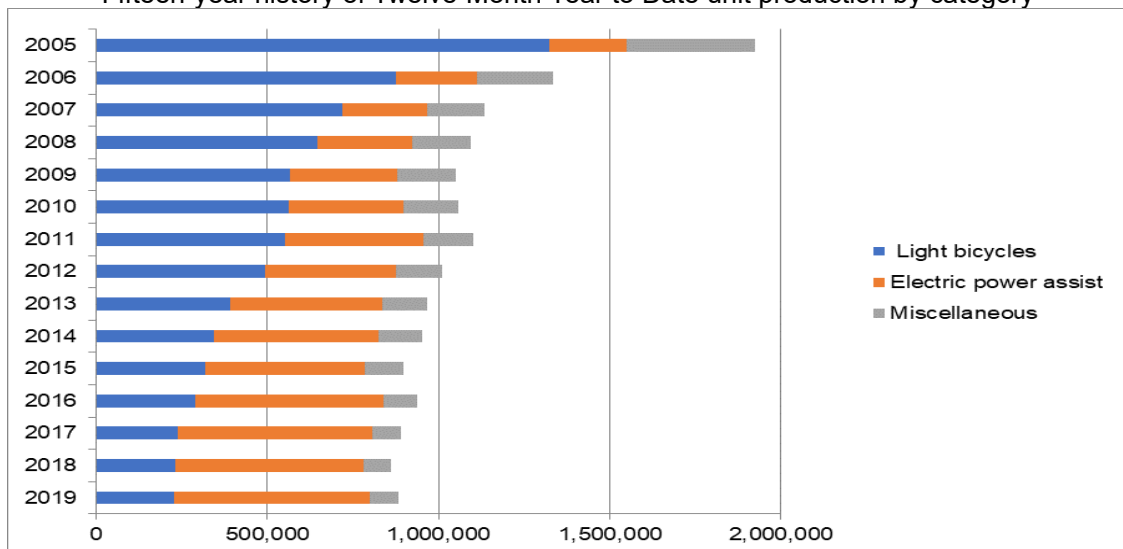
	Light bicycles	Electric power assist	Miscellaneous	Total
2019	226,743	574,537	82,798	884,078
2018	230,049	551,920	77,881	859,850
2017	239,837	568,025	82,988	890,850
2016	291,545	547,593	99,887	939,025
2015	320,461	464,800	112,834	898,095
2014	345,825	479,404	126,319	951,548
2013	392,297	443,782	129,875	965,954
2012	492,463	383,196	136,655	1,012,314
2011	553,185	403,208	145,273	1,101,666
2010	562,515	335,576	158,860	1,056,951
2009	566,983	311,337	171,149	1,049,469
2008	647,300	274,475	173,157	1,094,932
2007	719,554	247,899	168,153	1,135,606
2006	876,094	236,494	221,924	1,334,512
2005	1,324,736	223,616	378,084	1,926,436

From 2011, "Children & Infant bicycles", "Mini-cycles", "Mountain bikes" and "Special bicycles" have been combined into "Miscellaneous". "Miscellaneous" between 2004 and 2010 include these four categories.

Source : Ministry of Economy, Trade and Industry (METI) Current Production Statistics Survey  
Japan Bicycle Promotion Institute Processing and Analysis

Chart G shows a graphic presentation of the fifteen-year history of unit production by category based on Table 8. This chart shows that "Light bicycles" are decreasing, and "Electric power assist" is increasing.

Chart G  
Fifteen-year history of Twelve-Month Year to Date unit production by category



Source : Ministry of Economy, Trade and Industry (METI) Current Production Statistics Survey  
Japan Bicycle Promotion Institute Processing and Analysis

### 3. Japanese bicycle import

Bicycle import by category is mentioned below. To begin with, import categories and HS numbers in Japan are classified as follows. "Electric power assist bicycles" is not classified as a single category and considered to be included in the category of "Motorcycles with

electric motor for propulsion” in Trade Statistics. Please note that “Motorcycles with electric motor for propulsion” includes all electric motorcycles.

Table 9 Import categories and HS numbers

HS number and product category	Bicycle type
8712.00100 Mountain bikes	<ul style="list-style-type: none"> <li>• MTB(includes V brake or disk brake equipped)</li> <li>• Cross bikes</li> </ul>
8712.00211 Mini-cycles	<ul style="list-style-type: none"> <li>• Mini-cycles</li> <li>• Small wheel foldable bicycles</li> <li>• BMX</li> </ul>
8712.00218 Infant bicycles	<ul style="list-style-type: none"> <li>• Infant bicycles(12 – 16 inch)</li> <li>• Toy bicycles(12 inch two wheel)</li> <li>• Unicycles(12 – 16 inch)</li> </ul>
8712.00219 Children bicycles	<ul style="list-style-type: none"> <li>• Children bicycles(18 – 24 inch)</li> <li>• Junior MTB(18 – 24 inch)</li> <li>• Unicycles(18 – 24 inch)</li> </ul>
8712.00291 Light bicycles	<ul style="list-style-type: none"> <li>• Light bicycles(excludes outer derailleur equipped)</li> <li>• Single speed, sports use bicycles equipped with inner derailleur.</li> </ul>
8712.00299 Miscellaneous	<ul style="list-style-type: none"> <li>• Sports use bicycles</li> <li>• Light bicycles equipped with outer derailleur</li> <li>• Junior MTB(26 inch)</li> </ul>
8711.60000 Motorcycles with electric motor for propulsion	<ul style="list-style-type: none"> <li>• Electric motor cycles and electric power assist bicycles considered to be included.</li> </ul>

Source : Japan Bicycle Promotion Institute

### 3 – 1 Outline of 2019 bicycle import

Table 10 shows Japanese bicycle import of all product categories excluding “Motorcycles with electric motor for propulsion” in 2019 compared to 2018. Unit total is 6,239,721, 0.9% increase compared to 2018. On the other hand, total CIF value is JPY71,817,668 thousands, decreases by 2.9% compared to 2018, resulted in average CIF unit value of JPY11,510, 3.8% down.

The currency exchange rate is investigated. The average dollar-yen exchange rate in 2018 was US\$1=JPY110.50; however, it gets US\$1=JPY109.08 in 2019(Refer chief custom inspector published rate).

Table 10 Japanese bicycle import in 2019 compared to 2018  
 (“Motorcycles with electric motor for propulsion” is not included)

	Total units	Total CIF Value (JPY thousand)	Average CIF unit value (JPY)
2019	6,239,721	71,817,668	11,510
2018	6,182,082	73,955,914	11,963
Variance	57,639	-2,138,246	-453
Variance %	0.9	-2.9	-3.8

Source : Ministry of Finance Japan (MOF) Trade Statistics of Japan  
 Japan Bicycle Promotion Institute Processing and Analysis  
 Due to round off, Total may not match.

Table 10 Annex shows 2019 import of “Motorcycles with electric motor for propulsion” compared to 2018 for reference. Both unit and value show increase; however, average unit value shows down.

Table 10 Annex (Reference) Japanese import of  
“Motorcycles with electric motor for propulsion” in 2019 compared to 2018

	Total units	Total CIF Value (JPY thousand)	Average CIF unit value (JPY)
2019	383,595	14,058,499	36,649
2018	321,558	12,513,134	38,914
Variance	62,037	1,545,365	-2,265
Variance %	19.3	12.3	-5.8

Source : Ministry of Finance Japan (MOF) Trade Statistics of Japan  
Japan Bicycle Promotion Institute Processing and Analysis  
Due to round off, Total may not match.

### 3 – 2 2019 bicycle import by category

Table 11 shows 2019 Japanese bicycle import by category.

Table 11 Japanese bicycle imports in 2019 by category

HS number and category	Total units	Total CIF Value (JPY thousand)	Average CIF unit value (JPY)
8712.00100 Mountain bikes	160,977	2,755,409	17,117
8712.00211 Mini-cycles	273,416	3,421,303	12,513
8712.00218 Infant bicycles	405,711	2,951,477	7,275
8712.00219 Children bicycles	1,510,586	13,515,879	8,947
8712.00291 Light bicycles	1,670,668	15,801,881	9,458
8712.00299 Miscellaneous	2,218,363	33,371,719	15,043
Total	6,239,721	71,817,668	11,510

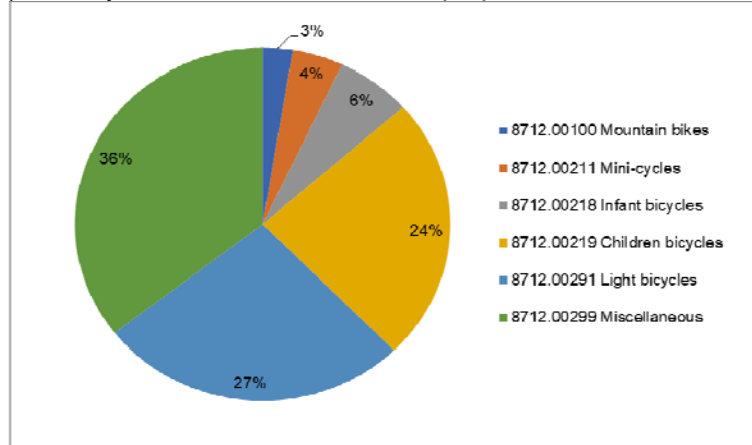
8711.60000 Motorcycles with electric motor for propulsion	383,595	14,058,499	36,649
--	---------	------------	--------

Source : Ministry of Finance Japan (MOF) Trade Statistics of Japan  
Japan Bicycle Promotion Institute Processing and Analysis

The average CIF unit value of HS8712.00100 “Mountain bikes” is JPY 17,117, the highest among the categories except for “Motorcycles with electric motor for propulsion”. The average CIF unit value of HS8712.00291 “Light bicycles” is JPY9,458, and its unit volume is the second biggest, following HS8712.00299 “Miscellaneous” which includes sports use bicycles and light bicycles equipped with outer derailleur. The unit volume and total CIF value of HS8712.00299 “Miscellaneous” are the highest among the categories. Its average CIF unit value is JPY 15,043.

Chart H shows a graphic presentation of 2019 Japanese bicycle import unit share by category based on Table 11. “Miscellaneous” captures 36% share and “Light bicycles” captures 27% share as well.

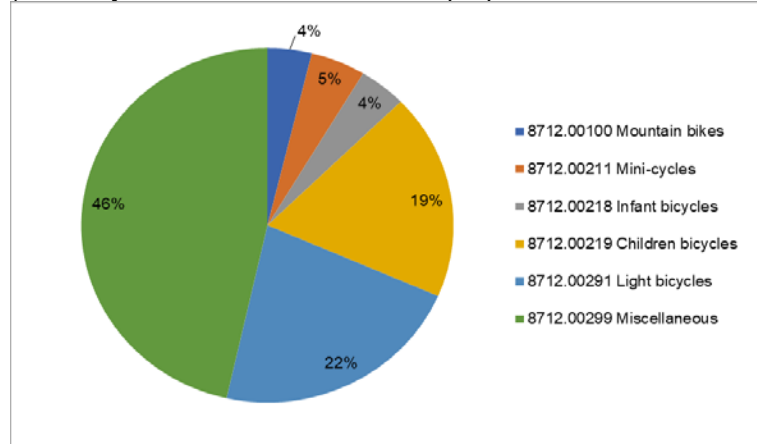
Chart H  
 Japanese bicycle import in 2019: Unit share by category  
 (“Motorcycles with electric motor for propulsion” is not included)



Source : Ministry of Finance Japan (MOF) Trade Statistics of Japan  
 Japan Bicycle Promotion Institute Processing and Analysis

Chart I shows a graphic presentation of 2019 Japanese bicycle import value share by category also based on Table 11. “Miscellaneous” captures 46% and “Light bicycles” captures 22% share.

Chart I  
 Japanese bicycle import in 2019: Value share by category  
 (“Motorcycles with electric motor for propulsion” is not included)



Source : Ministry of Finance Japan (MOF) Trade Statistics of Japan  
 Japan Bicycle Promotion Institute Processing and Analysis

Table 12 shows a 2019 Japanese bicycle import by category compared to the previous year. “Mini-cycles” and “Children bicycles” show increase both in unit and value. On the other hand, “Mountain bikes” and “Miscellaneous” increase in units but decrease in value. “Infant bicycles” and “Light bicycles” show decrease in both unit and value.

Table 12 Japanese bicycle import by category in 2019 compared to 2018

Category	2019		2018		Variance %	
	units	Total CIF value (JPY thousand)	units	Total CIF value (JPY thousand)	Units	CIF value
8712.00100 Mountain bikes	160,977	2,755,409	155,758	3,040,073	3.4%	-9.4%
8712.00211 Mini-cycles	273,416	3,421,303	238,234	2,923,424	14.8%	17.0%
8712.00218 Infant bicycles	405,711	2,951,477	456,854	3,418,805	-11.2%	-13.7%
8712.00219 Children bicycles	1,510,586	13,515,879	1,414,315	13,181,323	6.8%	2.5%
8712.00291 Light bicycles	1,670,668	15,801,881	1,760,761	16,964,521	-5.1%	-6.9%
8712.00299 Miscellaneous	2,218,363	33,371,719	2,156,160	34,427,768	2.9%	-3.1%
Total	6,239,721	71,817,668	6,182,082	73,955,914	0.9%	-2.9%
Average unit value (JPY)		11,510		11,963		-3.8%

8711.60000 Motorcycles with electric motor for propulsion	383,595	14,058,499	321,558	12,513,134	19.3%	12.3%
Average unit value (JPY)		36,649		38,914		-5.8%

Source : Ministry of Finance Japan (MOF) Trade Statistics of Japan  
Japan Bicycle Promotion Institute Processing and Analysis

### 3 – 3 Fifteen year history of bicycle import

Table 13 shows a fifteen-year history of Japanese bicycle import.

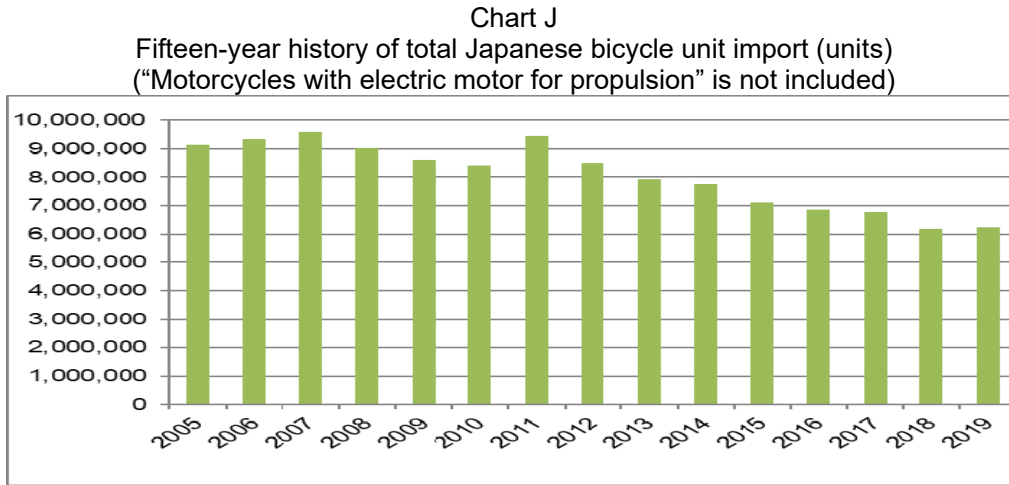
Table 13 Fifteen-year history of Japanese bicycle import:  
All categories (“Motorcycles with electric motor for propulsion” is not included)

	Total import units	Total CIF value (JPY thousand)	Average CIF unit value (JPY)
2019	6,239,721	71,817,668	11,510
2018	6,182,082	73,955,914	11,963
2017	6,777,799	75,706,866	11,170
2016	6,849,387	76,545,161	11,175
2015	7,122,444	93,348,703	13,106
2014	7,734,364	86,330,265	11,162
2013	7,932,395	80,110,588	10,099
2012	8,499,444	72,777,306	8,563
2011	9,450,592	74,541,580	7,888
2010	8,401,946	64,891,050	7,723
2009	8,621,717	70,434,052	8,169
2008	9,033,773	78,142,462	8,650
2007	9,603,314	74,875,361	7,797
2006	9,339,172	65,768,000	7,042
2005	9,143,819	58,146,512	6,359

Source : Ministry of Finance Japan (MOF) Trade Statistics of Japan  
Japan Bicycle Promotion Institute Processing and Analysis

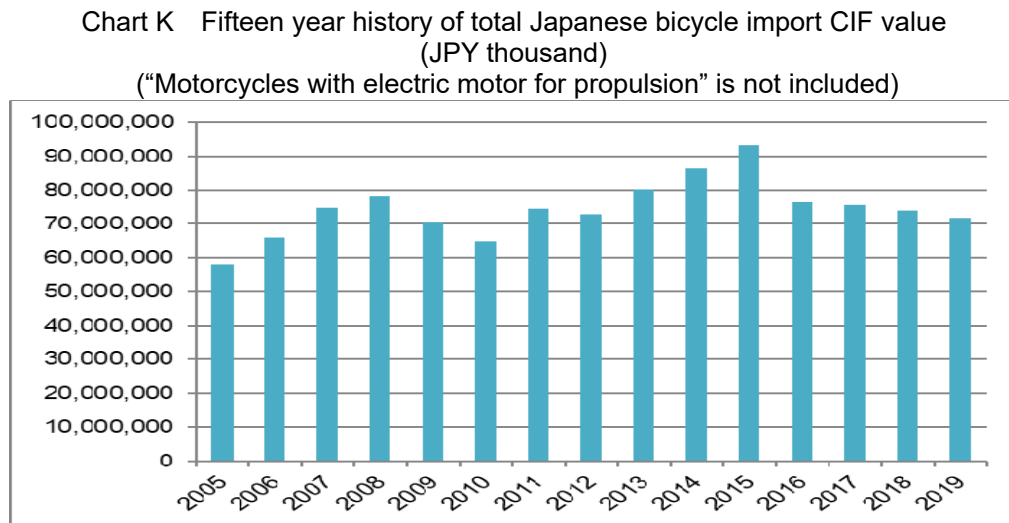
Total unit import in 2019 increases compared to 2018, but it is the fourteenth in the last fifteen years. On the other hand, total CIF value in 2019 is the eleventh in this history; make the average CIF unit value JPY 11,510, the third highest in this period.

Chart J shows the fifteen-year history of total import units based on Table 13.



Source : Ministry of Finance Japan (MOF) Trade Statistics of Japan  
Japan Bicycle Promotion Institute Processing and Analysis

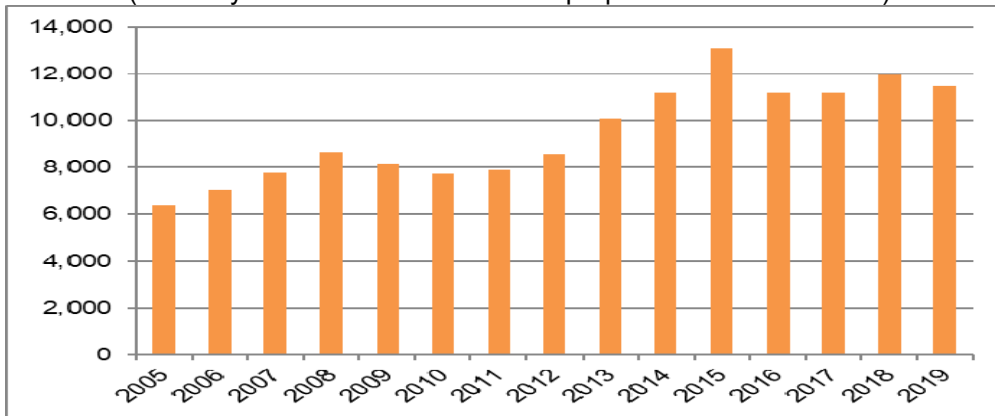
Chart K shows the fifteen-year history of total import CIF value also based on Table 13.



Source : Ministry of Finance Japan (MOF) Trade Statistics of Japan  
Japan Bicycle Promotion Institute Processing and Analysis

Chart L shows the fifteen-year history of average CIF unit import value also based on Table 13.

Chart L Fifteen year history of Japanese bicycle average  
CIF unit import value (JPY)  
("Motorcycles with electric motor for propulsion" is not included)



Source : Ministry of Finance Japan (MOF) Trade Statistics of Japan  
Japan Bicycle Promotion Institute Processing and Analysis

Table 14 shows the total unit import by month.

Table 14 Fifteen year history of total import units by month:  
("Motorcycles with electric motor for propulsion" is not included)

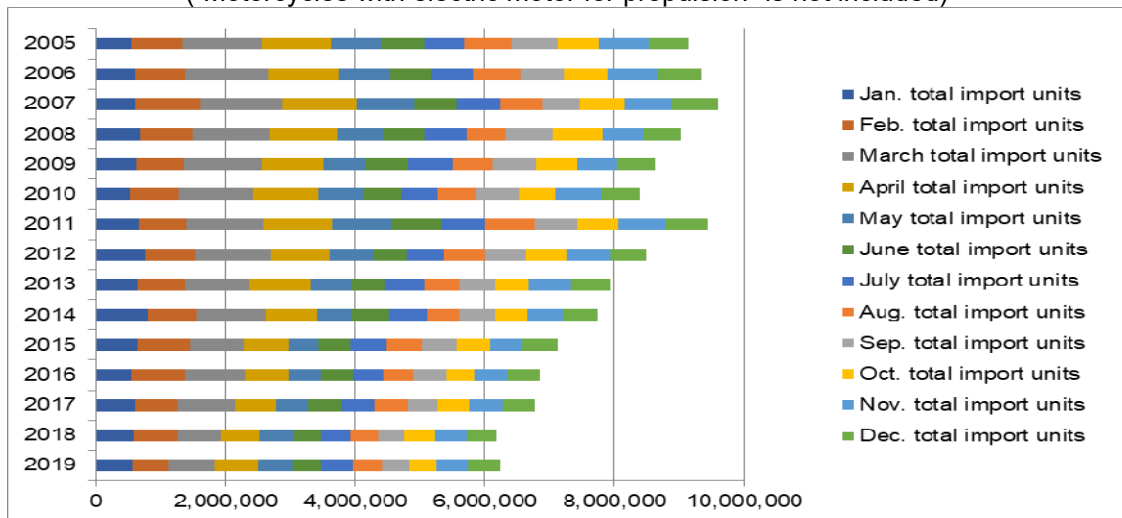
	January total import units	February total import units	March total import units	April total import units	May total import units	June total import units
2019	561,860	557,809	720,388	674,931	511,046	445,684
2018	584,582	672,121	684,815	588,526	515,094	434,024
2017	608,232	654,624	889,358	634,082	499,298	505,257
2016	559,379	823,009	916,762	673,000	493,419	507,531
2015	639,107	809,453	828,696	690,064	462,606	510,639
2014	800,012	758,904	1,067,576	783,049	546,090	581,432
2013	646,439	729,345	997,586	949,665	634,542	514,285
2012	759,838	779,645	1,156,072	904,565	672,252	525,908
2011	661,234	725,936	1,192,986	1,067,890	915,243	768,659
2010	529,116	759,113	1,140,340	1,002,806	691,515	600,223
2009	631,533	717,828	1,226,863	932,220	660,802	652,693
2008	679,048	809,921	1,195,076	1,041,042	718,439	623,626
2007	613,892	988,006	1,275,167	1,152,734	890,124	644,144
2006	602,545	765,063	1,303,124	1,075,231	796,610	633,795
2005	541,343	796,348	1,226,300	1,056,187	777,336	669,039

	July total import units	Aug. total import units	Sep. total import units	Oct. total import units	Nov. total import units	Dec. total import units	Total import units
2019	495,750	448,777	430,860	411,708	482,627	498,281	6,239,721
2018	452,637	430,168	393,334	481,847	479,022	465,912	6,182,082
2017	511,094	522,474	454,877	480,920	514,237	503,346	6,777,799
2016	460,740	464,093	509,475	438,628	518,622	484,729	6,849,387
2015	556,279	542,763	524,133	519,919	484,170	554,615	7,122,444
2014	572,129	504,218	543,409	502,832	540,165	534,548	7,734,364
2013	595,336	535,046	561,806	528,767	640,332	599,246	7,932,395
2012	586,024	629,284	631,719	642,217	649,625	562,295	8,499,444
2011	675,783	776,045	655,654	629,958	722,052	659,152	9,450,592
2010	562,581	582,646	663,734	546,459	719,973	603,440	8,401,946
2009	685,910	619,872	677,716	623,646	620,796	571,838	8,621,717
2008	646,395	612,531	729,659	770,349	625,626	582,061	9,033,773
2007	672,070	649,954	586,098	688,807	741,855	700,463	9,603,314
2006	643,767	724,797	673,445	684,487	767,415	668,893	9,339,172
2005	626,723	720,123	708,659	631,378	780,371	610,012	9,143,819

Source : Ministry of Finance Japan (MOF) Trade Statistics of Japan  
Japan Bicycle Promotion Institute Processing and Analysis

Chart M shows a graphic presentation of the fifteen-year history of total import units by month based on Table 14.

Chart M Fifteen year history of total Japanese bicycle import by month (units)  
("Motorcycles with electric motor for propulsion" is not included)



Source : Ministry of Finance Japan (MOF) Trade Statistics of Japan  
Japan Bicycle Promotion Institute Processing and Analysis

Table 15 shows a fifteen-year history of Japanese bicycle unit import by category.



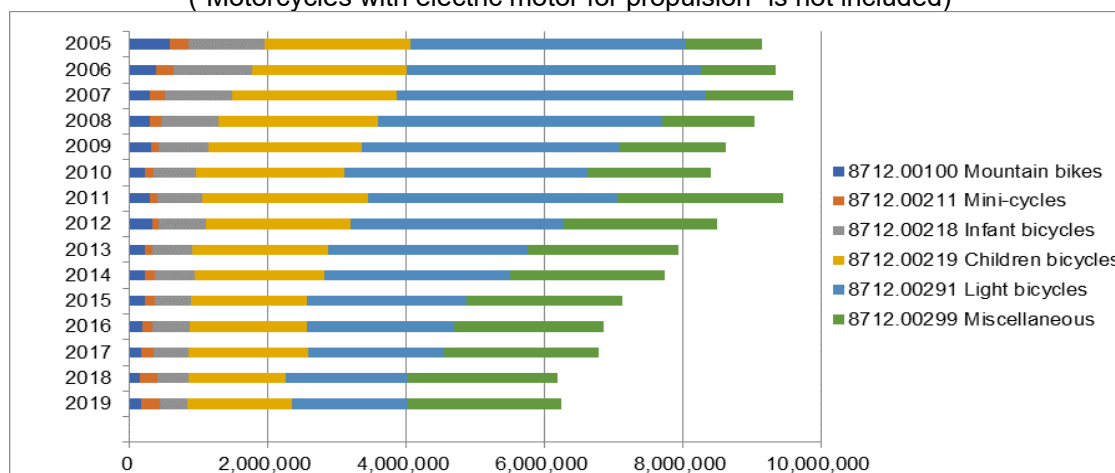
Table 15  
Fifteen-year history of Japanese bicycle unit import by categories  
("Motorcycles with electric motor for propulsion" is not included)

	8712.00100 Mountain bikes	8712.00211 Mini-cycles	8712.00218 Infant bicycles	8712.00219 Children bicycles	8712.00291 Light bicycles	8712.00299 Miscellaneous	Total
2019	160,977	273,416	405,711	1,510,586	1,670,668	2,218,363	6,239,721
2018	155,758	238,234	456,854	1,414,315	1,760,761	2,156,160	6,182,082
2017	168,007	186,440	503,297	1,729,446	1,962,119	2,228,490	6,777,799
2016	176,823	157,870	538,882	1,690,152	2,129,712	2,155,948	6,849,387
2015	219,152	142,150	520,523	1,675,477	2,318,196	2,246,946	7,122,444
2014	227,054	130,205	581,229	1,881,428	2,682,510	2,231,938	7,734,364
2013	219,848	99,363	585,485	1,966,906	2,881,192	2,179,601	7,932,395
2012	325,828	92,405	692,111	2,075,504	3,094,262	2,219,334	8,499,444
2011	288,094	110,599	658,735	2,387,853	3,608,216	2,397,095	9,450,592
2010	225,716	124,094	613,003	2,133,052	3,526,359	1,779,722	8,401,946
2009	300,708	118,241	718,801	2,210,631	3,744,364	1,528,972	8,621,717
2008	296,984	157,596	832,968	2,299,371	4,106,823	1,340,031	9,033,773
2007	289,270	213,917	986,539	2,368,441	4,481,866	1,263,281	9,603,314
2006	376,390	263,380	1,134,179	2,236,065	4,247,509	1,081,649	9,339,172
2005	576,127	278,403	1,091,848	2,105,760	4,000,024	1,091,657	9,143,819

Source : Ministry of Finance Japan (MOF) Trade Statistics of Japan  
Japan Bicycle Promotion Institute Processing and Analysis

Chart N shows these import histories.

Chart N  
Fifteen-year history of Japanese bicycle unit import by category (units)  
("Motorcycles with electric motor for propulsion" is not included)



Source : Ministry of Finance Japan (MOF) Trade Statistics of Japan  
Japan Bicycle Promotion Institute Processing and Analysis

### 3 – 4 Main source country/area of Japanese bicycle import

Table 16 shows source countries and areas of 2019 Japanese bicycle import.

Table 16 Main source countries and areas of Japanese bicycle imports in 2019  
 (“Motorcycles with electric motor for propulsion” is not included)

Source country/area	Total units	% share of total units	Total CIF Value (JPY thousand)	% share of total value	Average CIF unit value (JPY)
China	6,112,000	98.0	62,274,952	86.7	10,189
Taiwan	104,527	1.7	7,960,432	11.1	76,157
Others	23,194	0.4	1,582,284	2.2	68,220
Total	6,239,721	100.0	71,817,668	100.0	11,510

Source : Ministry of Finance Japan (MOF) Trade Statistics of Japan  
 Japan Bicycle Promotion Institute Processing and Analysis Due to round off, Total may not match.

“China” continues to be the biggest source country. It captures 98.0% of total units, and 86.7% of total CIF value. The average CIF unit value is JPY 10,189. “Taiwan” follows “China”, capturing 1.7% of total units, and 11.1% of total CIF value. The average CIF unit value is JPY 76,157. These two-combined captures 99.6% of total units and 97.8% of total CIF value.

Table 17 shows Japanese bicycle import from “China” by category.

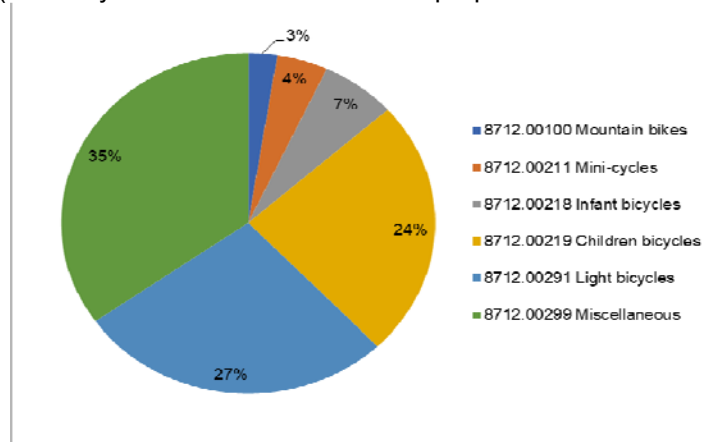
Table 17 Japanese bicycle import from “China” in 2019 by category  
 (“Motorcycles with electric motor for propulsion” is not included)

HS number and category	Total units	Total CIF Value (JPY thousand)	Average CIF unit value (JPY)
8712.00100 Mountain bikes	152,761	2,303,857	15,081
8712.00211 Mini-cycles	269,354	3,193,641	11,857
8712.00218 Infant bicycles	396,685	2,712,187	6,837
8712.00219 Children bicycles	1,496,147	13,155,126	8,793
8712.00291 Light bicycles	1,669,069	15,733,512	9,427
8712.00299 Miscellaneous	2,127,984	25,176,629	11,831
Total	6,112,000	62,274,952	10,189

Source : Ministry of Finance Japan (MOF) Trade Statistics of Japan  
 Japan Bicycle Promotion Institute Processing and Analysis

Chart O shows a graphic presentation of 2019 Japanese bicycle import unit share from “China” by category based on Table 17. “Miscellaneous” captures 35% share and “Light bicycles” follows to capture 27% share. Unit import volume from “China” is so huge; therefore, this chart looks like Chart H which shows Japanese total unit import share by category.

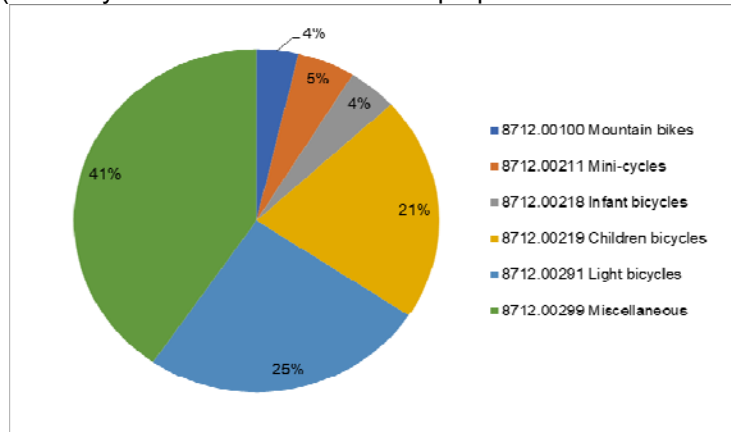
Chart O Japanese bicycle import from “China” in 2019: Unit share by category (“Motorcycles with electric motor for propulsion” is not included)



Source : Ministry of Finance Japan (MOF) Trade Statistics of Japan  
Japan Bicycle Promotion Institute Processing and Analysis

Chart P shows a graphic presentation of 2019 Japanese bicycle import value share from “China” by category also based on Table 17. “Miscellaneous” captures 41% share and “Light bicycles” follows capturing 25% share.

Chart P Japanese bicycle import from “China” in 2019: Value share by category (“Motorcycles with electric motor for propulsion” is not included)



Source : Ministry of Finance Japan (MOF) Trade Statistics of Japan  
Japan Bicycle Promotion Institute Processing and Analysis

Then, Table 18 follows to show Japanese bicycle import from “Taiwan” by category.

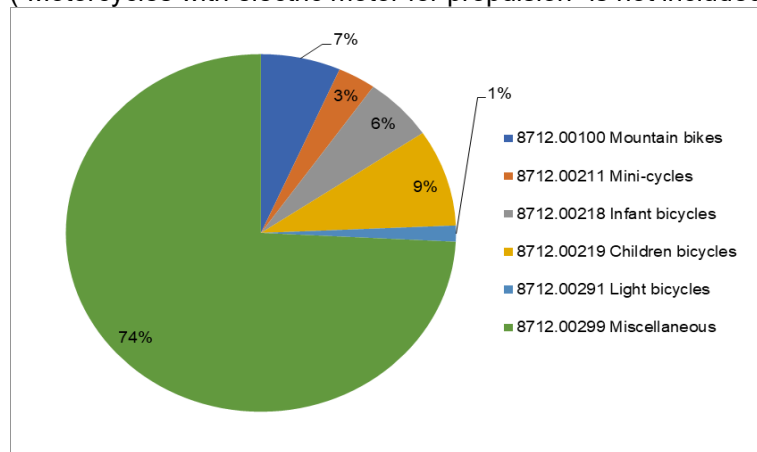
Table 18 Japanese bicycle import from “Taiwan” in 2019 by category  
 (“Motorcycles with electric motor for propulsion” is not included)

HS number and category	Total units	Total CIF Value (JPY thousand)	Average CIF unit value (JPY)
8712.00100 Mountain bikes	6,909	353,094	51,106
8712.00211 Mini-cycles	3,301	168,988	51,193
8712.00218 Infant bicycles	6,058	41,621	6,870
8712.00219 Children bicycles	9,168	221,392	24,148
8712.00291 Light bicycles	1,517	59,619	39,301
8712.00299 Miscellaneous	77,574	7,115,718	91,728
Total	104,527	7,960,432	76,157

Source : Ministry of Finance Japan (MOF) Trade Statistics of Japan  
 Japan Bicycle Promotion Institute Processing and Analysis

Chart Q shows a graphic presentation of 2019 Japanese bicycle import unit share from “Taiwan” by category based on Table 18. This chart looks totally different from Chart H which shows total import or Chart O which shows import from “China”. “Miscellaneous” captures 74% big share and “Mountain Bikes” follows to capture 7% share. On the other hand, “Light bicycles” only captures 1% share.

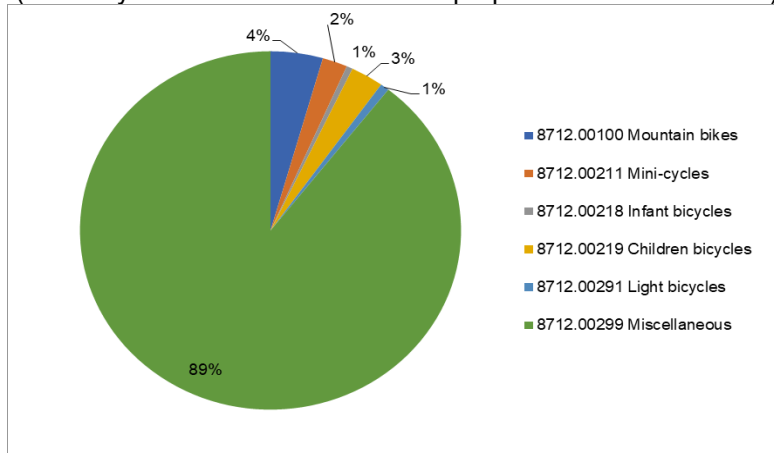
Chart Q Japanese bicycle import from “Taiwan” in 2019: Unit share by category  
 (“Motorcycles with electric motor for propulsion” is not included)



Source : Ministry of Finance Japan (MOF) Trade Statistics of Japan  
 Japan Bicycle Promotion Institute Processing and Analysis

Moreover, Chart R shows a graphic presentation of 2019 Japanese bicycle import value share from “Taiwan” by category also based on Table 18. The characteristics appear more remarkably than the unit import share. “Miscellaneous” captures 89% share and “Mountain Bikes” follows capturing 4% share. The share of “Light bicycles” is only 1%.

Chart R Japanese bicycle import from “Taiwan” in 2019: Value share by category (“Motorcycles with electric motor for propulsion” is not included)



Source : Ministry of Finance Japan (MOF) Trade Statistics of Japan  
Japan Bicycle Promotion Institute Processing and Analysis

Then, Table 19 shows source countries and areas of 2019 Japanese “Motorcycles with electric motor for propulsion” import compared to that of 2018 for reference.

Table 19 (Reference) Main source countries and areas of Japanese “Motorcycles with electric motor for propulsion” import in 2019 compared to 2018

Source country/area	Total units	% share of total units	Total CIF Value (JPY thousand)	% share of total value	Average CIF unit value (JPY)
2019 China	377,081	98.3	13,234,416	94.1	35,097
2018 China	316,613	98.5	11,994,537	95.9	37,884
Variance %	60,468	-0.2	1,239,879	-1.7	-2,787
2019 Taiwan	5,435	1.4	508,590	3.6	93,577
2018 Taiwan	4,219	1.3	284,310	2.3	67,388
Variance %	1,216	0.1	224,280	1.3	26,189
2019 Others	1,079	0.3	315,493	2.2	292,394
2018 Others	726	0.2	234,287	1.9	322,709
Variance %	353	0.1	81,206	0.4	-30,315
2019 Total	383,595	100.0	14,058,499	100.0	36,649
2018 Total	321,558	100.0	12,513,134	100.0	38,914
Variance %	62,037	0.0	1,545,365	0.0	-2,265

Source : Ministry of Finance Japan (MOF) Trade Statistics of Japan  
Japan Bicycle Promotion Institute Processing and Analysis Due to round off, Total may not match.

#### **4. Domestic unit volume**

Almost all the Japanese bicycle export is used bicycle export to developing countries. Therefore, production units plus import units can be defined as domestic unit volume. Table 20 shows a fifteen-year history of domestic unit volume. 2019 domestic unit volume is 7,123,799, slight increase from the previous year; however, it is the fourteenth in the last fifteen years. And its domestic production ratio is 12.4%.

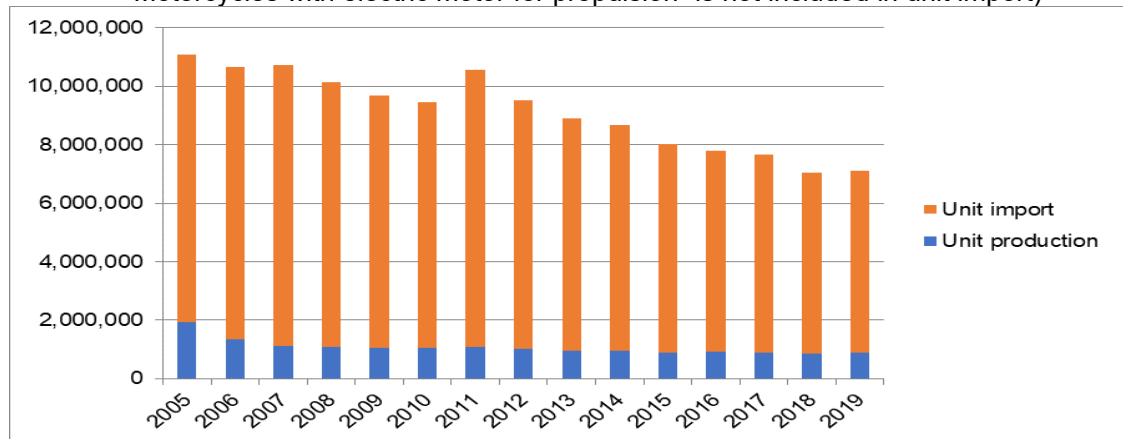
Table 20 Fifteen-year history of Japanese bicycle domestic unit volume  
 (“Electric power assist bicycles” is included in unit production,  
 “Motorcycles with electric motor for propulsion” is not included in unit import)

	Unit production	Unit import	Domestic unit volume	Domestic production ratio %
2019	884,078	6,239,721	7,123,799	12.4
2018	859,850	6,182,082	7,041,932	12.2
2017	890,850	6,777,799	7,668,649	11.6
2016	939,025	6,849,387	7,788,412	12.1
2015	898,095	7,122,444	8,020,539	11.2
2014	951,548	7,734,364	8,685,912	11.0
2013	965,954	7,932,395	8,898,349	10.9
2012	1,012,314	8,499,444	9,511,758	10.6
2011	1,101,666	9,450,592	10,552,258	10.4
2010	1,056,951	8,401,946	9,458,897	11.2
2009	1,049,469	8,621,717	9,671,186	10.9
2008	1,094,932	9,033,773	10,128,705	10.8
2007	1,135,606	9,603,314	10,738,920	10.6
2006	1,334,512	9,339,172	10,673,684	12.5
2005	1,926,436	9,143,819	11,070,255	17.4

Source : Ministry of Economy, Trade and Industry (METI) Current Production Statistics Survey  
 (2018 figure is revised)  
 Ministry of Finance Japan (MOF) Trade Statistics of Japan  
 Japan Bicycle Promotion Institute Processing and Analysis

Chart S is the graphic presentation of this history.

Chart S Fifteen-year history of domestic bicycle unit volume (units)  
 (“Electric power assist bicycles” is included in unit production,  
 “Motorcycles with electric motor for propulsion” is not included in unit import)



Source : Ministry of Economy, Trade and Industry (METI) Current Production Statistics Survey  
 (2018 figure is revised)  
 Ministry of Finance Japan (MOF) Trade Statistics of Japan  
 Japan Bicycle Promotion Institute Processing and Analysis

## 5. Japanese bicycle export

Almost all the Japanese bicycle export is used bicycle export to developing countries. Table 21 shows main destination countries and areas of Japanese bicycle export in 2019. Average FOB unit value clearly proves that the bicycle export is used bicycle export. In this part of the report, “Motorcycles with electric motor for propulsion” is excluded.

Table 21 Japanese bicycle export in 2019 by destination countries and areas

Destination country/area	Total units	Total FOB value (JPY thousand)	Average FOB unit value (JPY)
Ghana	625,837	998,419	1,595
Myanmar	616,501	872,576	1,415
Cambodia	402,237	858,158	2,133
Afghanistan	342,069	539,753	1,578
Tanzania	227,975	388,811	1,705
Iraq	202,578	382,220	1,887
Nigeria	179,257	318,978	1,779
UAE	130,737	231,882	1,774
Philippines	111,616	193,523	1,734
Turkey	45,632	93,942	2,059
Others	225,490	508,710	2,256
Total	3,109,929	5,386,972	1,732

Source : Ministry of Finance Japan (MOF) Trade Statistics of Japan  
Japan Bicycle Promotion Institute Processing and Analysis

Table 22 shows a fifteen-year history of Japanese bicycle export from 2005 to 2019. In 2019, total units are the sixth largest and total value is the third highest in the last fifteen years. The average unit value in 2019 is JPY 1,732, the second highest in the last fifteen years.

Table 22 Fifteen-year history of Japanese bicycle export: All categories

	Total units	Total FOB value (JPY thousand)	Average FOB unit value (JPY)
2019	3,109,929	5,386,972	1,732
2018	3,068,426	5,164,377	1,683
2017	3,162,452	5,085,776	1,608
2016	3,160,819	5,389,032	1,705
2015	3,558,029	6,475,518	1,820
2014	3,301,196	5,128,410	1,554
2013	3,142,282	4,320,542	1,375
2012	2,980,626	3,863,945	1,296
2011	2,676,620	3,505,035	1,310
2010	2,393,342	3,180,711	1,329
2009	2,214,528	3,000,068	1,355
2008	2,283,080	3,772,868	1,653
2007	2,095,644	3,028,212	1,445
2006	1,340,136	1,467,329	1,095
2005	1,221,802	1,364,928	1,117

Source : Ministry of Finance Japan (MOF) Trade Statistics of Japan  
Japan Bicycle Promotion Institute Processing and Analysis

###