

Japanese bicycle production, import and export (Twelve-Month Year to Date 2016)

1. Preface

The purpose of this report is to show the Japanese bicycle market trend through comprehensive investigation of the Japanese bicycle production, import and export. First, the production of the domestic bicycle manufacturers will be clarified using Ministry of Economy, Trade and Industry (METI) Current Production Statistics, and total production activities including shipment, inventories and time series trend will be explained. Second, due to the current big share of import bicycles in the Japanese bicycle market, bicycle import will be investigated by categories and by time series using Ministry of Finance Japan (MOF) Trade Statistics, and general bicycle market trend will be grasped. Then, comprehensive Japanese bicycle market trend including bicycle production becomes clear. Finally, Japanese bicycle export which is now mostly used bicycle export will be briefly referenced.

During twelve-month Year to Date 2016, the increase of “Electric power assist” production leads the entire production increases when compared to the same period of 2015. As to import, both total unit import and value decrease, and average import unit price also decreases during the twelve-month YTD 2016 when compared to the same period of the previous year. As a result, the twelve-month YTD 2016 domestic unit volume which consists of production units and import units is 7,793,154, the lowest in the last eleven years.

2. Japanese bicycle production

2 – 1 Outline of twelve-month year to date 2016 bicycle production

According to Ministry of Economy, Trade and Industry (METI) Current Production Statistics Survey, Japanese complete bicycle production in twelve-month year to date 2016 is 943,769 units, and JPY 54,024million. Table 1 shows that total unit production increases 5.1%, and total production value also increases 15.8%, compared to the same period of the previous year. Average production unit value in twelve-month year to date 2016 is up10.2% from JPY 51,943 in 2015 to JPY 57,243 in 2016.

Table 1 Twelve-Month Year to Date 2016 Japanese bicycle production

	Total Units	Total Production Value(JPY million)	Average Unit Value(JPY)
12 month YTD 2016	943,769	54,024	57,243
12 month YTD 2015	898,095	46,650	51,943
Variance	45,674	7,374	5,300
Variance%	5.1%	15.8%	10.2%

Source : Ministry of Economy, Trade and Industry (METI) Current Production Statistics Survey
(2015 figure is revised) Japan Bicycle Promotion Institute Processing and Analysis

Table 2 shows the detail by product category of Japanese bicycle production during the twelve-month year to date 2016 compared to the same period of 2015. Only “Electric power assist” shows increase. “Light bicycles” and “Miscellaneous” show decrease.

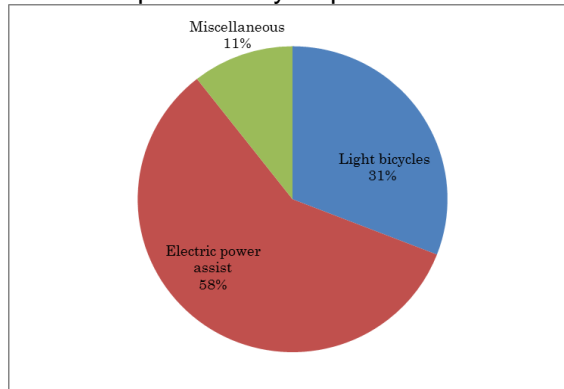
Table 2 Production by category:
Twelve-Month Year to Date 2016 compared to Twelve-Month Year to Date 2015

12 month YTD	2016		2015		Variance			
	units	Value(JPY million)	units	Value(JPY million)	units	%	Value (JPY million)	%
Light bicycles	291,553	7,522	320,461	7,955	-28,908	-9.0	-433	-5.4
Electric power assist	552,315	43,780	464,800	35,218	87,515	18.8	8,562	24.3
Miscellaneous	99,901	2,721	112,834	3,477	-12,933	-11.5	-756	-21.7
Total	943,769	54,024	898,095	46,650	45,674	5.1	7,374	15.8

Source : Ministry of Economy, Trade and Industry (METI) Current Production Statistics Survey
(2015 figure is revised) Japan Bicycle Promotion Institute Processing and Analysis
Due to round off, Total may not match.

Chart A shows a graphic presentation of twelve-month year to date 2016 Japanese bicycle unit production share by category based on Table 2. “Electric power assist” captures 58% share, and “Light bicycles” follows capturing 31% share.

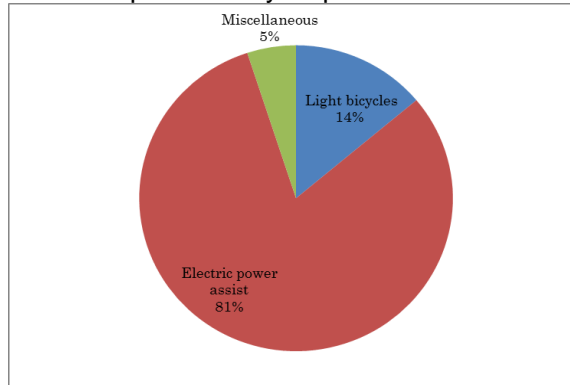
Chart A
Twelve-Month YTD2016 Japanese bicycle production: % unit share by category



Source : Ministry of Economy, Trade and Industry (METI) Current Production Statistics Survey, Japan Bicycle Promotion Institute Processing and Analysis

Chart B shows a graphic presentation of twelve-month year to date 2016 Japanese bicycle production value share by category also based on Table 2. “Electric power assist” captures 81% share.

Chart B
Twelve-Month YTD2016 Japanese bicycle production: % value share by category



Source : Ministry of Economy, Trade and Industry (METI) Current Production Statistics Survey, Japan Bicycle Promotion Institute Processing and Analysis

Table 3 shows average production unit value by product category in twelve-month year to date 2016 compared to the same period of 2015. “Light bicycles” and “Electric power assist” show increase, on the other hand, “Miscellaneous” shows decrease.

Table 3 Average Unit Value by product category:
Twelve-Month Year to Date 2016 compared to Twelve-Month Year to Date 2015

Category	Average Unit Value(JPY) 12 month YTD 2016	Average Unit Value(JPY) 12 month YTD 2015	Variance (JPY)	Variance (%)
Light bicycles	25,800	24,824	976	3.9
Electric power assist	79,266	75,770	3,496	4.6
Miscellaneous	27,237	30,815	-3,578	-11.6
Total	57,243	51,943	5,300	10.2

Source : Ministry of Economy, Trade and Industry (METI) Current Production Statistics Survey
(2015 figure is revised) Japan Bicycle Promotion Institute Processing and Analysis
Due to round off, Total may not match.

Table 4 shows production units, total value and average unit value of “Electric power assist bicycles” by month. Average unit value decreased from July to September; however, it increased again after October when compared to the same month of the previous year.

Table 4
Production of “Electric power assist bicycles” by month: 2016 compared to 2015

	2016			2015			Variance of unit production	Variance of production value(JPY million)	Variance of average unit value(JPY)
	Unit production	Production value(JPY million)	Average unit value(JPY)	Unit production	Production value(JPY million)	Average unit value(JPY)			
January	41,742	3,430	82,171	37,302	2,547	68,281	13,891	41,742	3,430
February	45,270	3,612	79,788	36,666	2,837	77,374	2,414	45,270	3,612
March	53,414	4,259	79,736	44,783	3,172	70,830	8,905	53,414	4,259
April	48,027	3,917	81,558	44,113	3,380	76,621	3,914	537	4,937
May	47,090	3,845	81,652	38,962	3,021	77,537	8,128	824	4,115
June	51,912	4,229	81,465	40,324	3,149	78,092	11,588	1,080	3,372
July	46,475	3,517	75,675	35,305	2,775	78,601	11,170	742	-2,926
August	44,848	3,524	78,577	32,068	2,570	80,142	12,780	954	-1,566
September	45,918	3,448	75,090	37,155	2,864	77,082	8,763	584	-1,992
October	46,853	3,581	76,431	41,370	3,122	75,465	5,483	459	965
November	40,040	3,156	78,821	38,747	2,776	71,644	1,293	380	7,177
December	40,726	3,262	80,096	38,005	3,006	79,095	2,721	256	1,001
YTD	552,315	43,780	79,266	464,800	35,218	75,770	87,515	8,562	3,496

Source : Ministry of Economy, Trade and Industry (METI) Current Production Statistics Survey
(2015 figure is revised) Japan Bicycle Promotion Institute Processing and Analysis
Due to round off, Total may not match.

2 – 2 Comprehensive production, shipments and inventory status of the Japanese bicycle manufacturers

Table 5 shows comprehensive manufacturing and sales condition including production, receipts, shipments (sales and others) and month end inventory in twelve-month year to date 2016 compared to the same period of 2015.

Table 5 Production, shipments and inventory of the Japanese bicycle manufacturers:
Twelve-Month Year to Date 2016 compared to Twelve-Month Year to Date 2015

Category	Production		Receipts (Units)	Shipments			Dec. end Inventory (Units)
	Units	Value (JPY million)		Sales		Others (Units)	
				Units	Value (JPY million)		
12 month YTD 2016 Light bicycles	291,553	7,522	682,367	681,757	11,070	292,975	84,913
12 month YTD 2015 Light bicycles	320,461	7,955	733,151	710,753	11,453	350,159	85,493
Variance %	-9.0	-5.4	-6.9	-4.1	-3.3	-16.3	-0.7
12 month YTD 2016 Electric power assist	552,315	43,780	394,355	551,009	40,769	390,198	38,713
12 month YTD 2015 Electric power assist	464,800	35,218	335,335	467,867	33,167	334,354	28,279
Variance %	18.8	24.3	17.6	17.8	22.9	16.7	36.9
12 month YTD 2016 Miscellaneous	99,901	2,721	435,182	398,077	9,082	133,113	33,224
12 month YTD 2015 Miscellaneous	112,834	3,477	418,026	402,789	9,174	132,248	29,289
Variance %	-11.5	-21.7	4.1	-1.2	-1.0	0.7	13.4
12 month YTD 2016 Total	943,769	54,024	1,511,904	1,630,843	60,917	816,286	156,850
12 month YTD 2015 Total	898,095	46,650	1,486,512	1,581,409	53,794	816,761	143,061
Variance %	5.1	15.8	1.7	3.1	13.2	-0.1	9.6

Source : Ministry of Economy, Trade and Industry (METI) Current Production Statistics Survey
(2015 figure is revised) Japan Bicycle Promotion Institute Processing and Analysis
Due to round off, Total may not match.

Total receipts units in twelve-month year to date 2016 increase 1.7% compared to twelve-month year to date 2015. However, “Light bicycles” decrease by 6.9%.

Total units of shipments sales in twelve-month year to date 2016 increase 3.1% compared to that of twelve-month year to date 2015. “Electric power assist” greatly increases, but “Light bicycles” and “Miscellaneous” decrease.

Total value of shipments sales increases by 13.2% in twelve-month year to date 2016 compared to the same period of 2015. Here again, “Electric power assist” greatly increases, but “Light bicycles” and “Miscellaneous” decrease.

Total units of shipments others decrease 0.1% in twelve-month year to date 2016 compared to the same period of 2015. “Light bicycles” decreases, on the other hand, “Electric power assist” and “Miscellaneous” increase. Shipments others are principally the commissioned products shipped to the consigners.

Total month end inventory in December 2016 is 156,850 units, 9.6% increase compared to December 2015.

2 – 3 Eleven year history of twelve-month year to date bicycle production

Table 6 shows an eleven year history of twelve-month year to date Japanese bicycle production, shipments and inventory from 2006 to 2016.

Table 6 Eleven year history of bicycle production and shipments:
Twelve-Month Year to Date December end inventory by Japanese bicycle manufactures

12 month YTD	Production			Shipments			Dec. end Inventory (Units)
	Units	Value(JPY million)	Average Unit Value(JPY)	Units	Value(JPY million)	Average Unit Value(JPY)	
2016	943,769	54,024	57,243	1,630,843	60,917	37,353	156,850
2015	898,095	46,650	51,943	1,581,409	53,794	34,017	143,061
2014	951,548	47,111	49,510	1,692,522	53,464	31,588	156,625
2013	965,954	42,901	44,413	2,013,626	55,647	27,635	214,539
2012	1,012,314	40,282	39,792	2,662,605	59,321	22,279	231,240
2011	1,101,666	42,786	38,838	3,012,322	65,969	21,900	241,321
2010	1,056,951	36,956	34,965	3,038,180	58,087	19,119	208,140
2009	1,049,469	34,435	32,812	3,098,458	56,257	18,156	219,329
2008	1,094,932	28,849	26,348	3,503,464	53,461	15,259	215,790
2007	1,135,606	25,205	22,195	3,616,043	47,819	13,224	211,533
2006	1,334,512	25,616	19,195	3,924,321	47,484	12,100	214,826

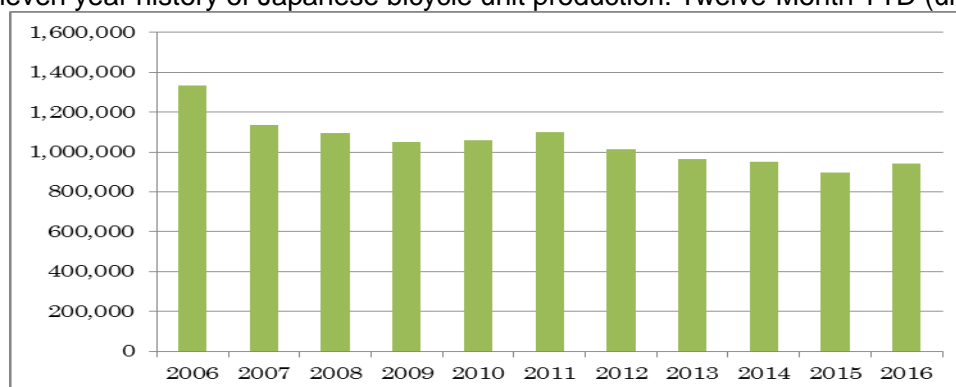
Source : Ministry of Economy, Trade and Industry (METI) Current Production Statistics Survey
(Before 2015 figure is revised)

Japan Bicycle Promotion Institute Processing and Analysis

Production units in twelve-month year to date 2016 are the tenth in eleven years. However, production value in this period is the highest. With these facts, the average production unit value is the highest in eleven years. Also, shipments units in twelve-month year to date 2016 are the tenth in eleven years, and shipments value in twelve-month year to date 2016 is the second. The average shipments unit value in twelve-month year to date 2016 is the highest. When compared average production unit value to average shipments unit value, average production unit value has been higher than average shipments unit value for eleven consecutive years. Month end inventory of December 2016 is 156,850 units, the ninth in the last eleven years.

Chart C shows a graphic presentation of this eleven year history of Japanese bicycle unit production during the twelve-month year to date from 2006 to 2016 based on Table 6.

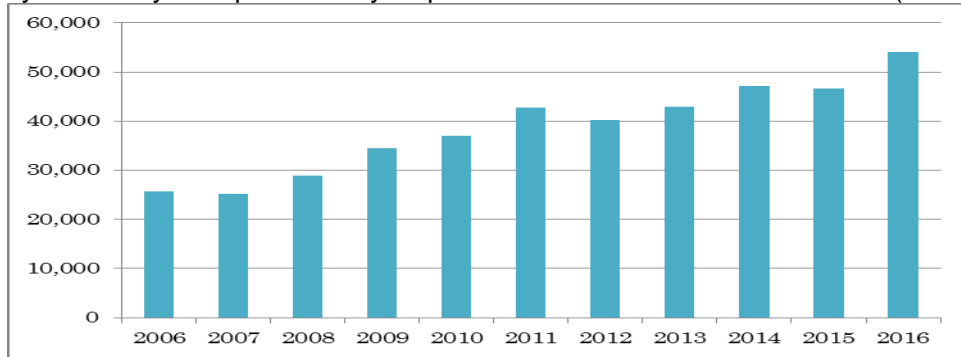
Chart C
Eleven year history of Japanese bicycle unit production: Twelve-Month YTD (units)



Source : Ministry of Economy, Trade and Industry (METI) Current Production Statistics Survey,
Japan Bicycle Promotion Institute Processing and Analysis

Chart D shows a graphic presentation of the eleven year history of Japanese bicycle production value during the twelve-month year to date from 2006 to 2016 also based on Table 6. It can be said that production value is on the upward trend.

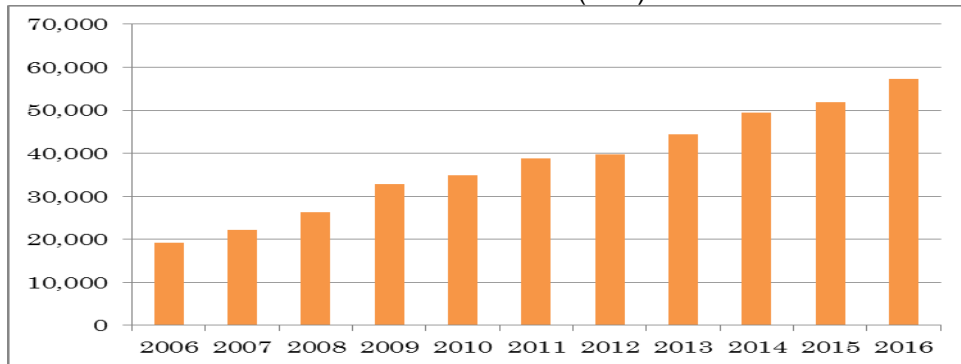
Chart D
 Eleven year history of Japanese bicycle production value: Twelve-Month YTD (JPY million)



Source : Ministry of Economy, Trade and Industry (METI) Current Production Statistics Survey, Japan Bicycle Promotion Institute Processing and Analysis

Chart E shows a graphic presentation of the eleven year history of Japanese bicycle production average unit value during the twelve-month year to date from 2006 to 2016 also based on Table 6.

Chart E
 Eleven year history of Japanese bicycle production average unit value: Twelve-Month YTD (JPY)



Source : Ministry of Economy, Trade and Industry (METI) Current Production Statistics Survey, Japan Bicycle Promotion Institute Processing and Analysis

Table 7 shows the eleven year history of the total unit production by month.

Table 7 Eleven year history of total production units by month (units)

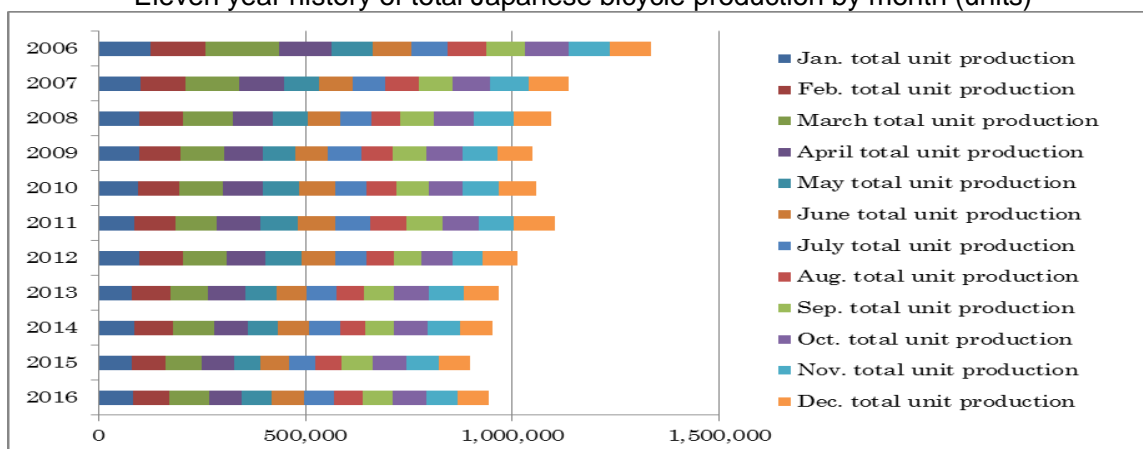
	Jan. total unit production	Feb. total unit production	March total unit production	April total unit production	May total unit production	June total unit production
2016	82,586	88,069	94,670	81,062	72,186	78,781
2015	78,891	81,242	89,722	75,857	66,218	68,133
2014	84,512	93,408	100,416	83,216	72,121	74,255
2013	79,022	92,667	93,062	88,877	75,906	71,711
2012	96,874	105,350	106,202	95,001	85,528	83,915
2011	86,445	98,081	98,935	107,181	90,542	92,009
2010	93,923	99,424	106,524	98,097	87,516	86,269
2009	96,944	99,314	106,639	94,506	76,287	80,900
2008	97,728	104,912	121,903	96,456	82,921	78,520
2007	99,537	108,413	130,721	108,017	86,039	81,714
2006	124,909	133,470	177,599	128,017	97,944	93,522

年	July total unit production	Aug. total unit production	Sep. total unit production	Oct. total unit production	Nov. total unit production	Dec. total unit production	Total unit production
2016	71,533	69,022	71,472	82,749	76,539	75,100	943,769
2015	64,647	62,481	74,354	82,311	79,144	75,095	898,095
2014	74,981	62,167	68,705	81,603	78,727	77,437	951,548
2013	72,325	66,889	74,392	82,781	84,937	83,385	965,954
2012	74,820	65,045	68,721	73,476	73,695	83,687	1,012,314
2011	83,200	86,553	88,460	86,528	87,020	96,712	1,101,666
2010	75,897	72,056	77,555	82,694	86,498	90,498	1,056,951
2009	80,068	76,206	81,360	88,312	85,103	83,830	1,049,469
2008	76,552	70,488	80,661	95,816	98,763	90,212	1,094,932
2007	79,147	79,509	81,679	91,745	93,341	95,744	1,135,606
2006	87,738	94,248	94,359	105,347	99,636	97,723	1,334,512

Source : Ministry of Economy, Trade and Industry (METI) Current Production Statistics Survey, Japan Bicycle Promotion Institute Processing and Analysis (Before 2015 figure is revised)

Chart F shows a graphic presentation of the eleven year history of total production units by month based on Table 7. This chart shows that the bicycle production is carried out relatively equally every month.

Chart F
Eleven year history of total Japanese bicycle production by month (units)



Source : Ministry of Economy, Trade and Industry (METI) Current Production Statistics Survey, Japan Bicycle Promotion Institute Processing and Analysis

Table 8 shows an eleven year history of twelve-month year to date Japanese bicycle unit production by category.

Table 8 Eleven-year history of Twelve-Month Year to Date Japanese bicycle unit production by categories (unit)

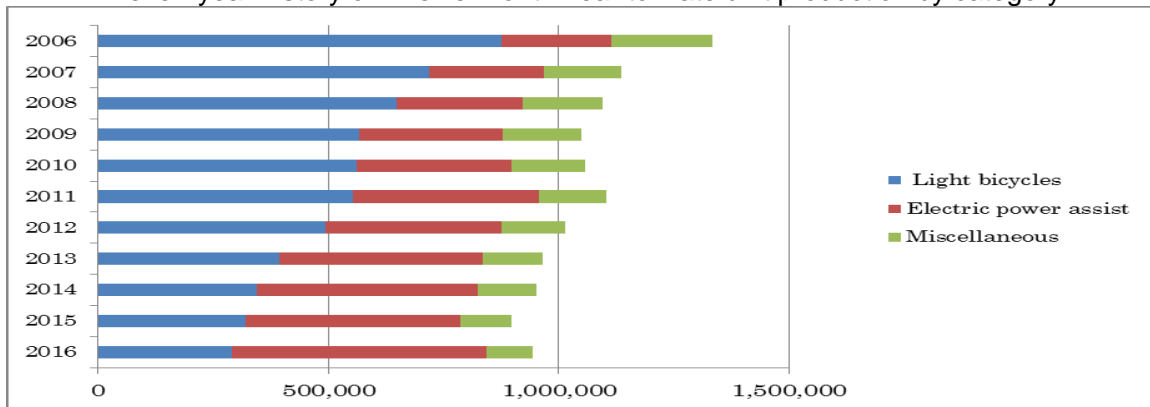
	Light bicycles	Electric power assist	Miscellaneous	Total
2016	291,553	552,315	99,901	943,769
2015	320,461	464,800	112,834	898,095
2014	345,825	479,404	126,319	951,548
2013	392,297	443,782	129,875	965,954
2012	492,463	383,196	136,655	1,012,314
2011	553,185	403,208	145,273	1,101,666
2010	562,515	335,576	158,860	1,056,951
2009	566,983	311,337	171,149	1,049,469
2008	647,300	274,475	173,157	1,094,932
2007	719,554	247,899	168,153	1,135,606
2006	876,094	236,494	221,924	1,334,512

From 2011, "Children & Infant bicycles", "Mini-cycles", "Mountain bikes" and "Special bicycles" have been combined into "Miscellaneous". "Miscellaneous" between 2006 and 2010 include these four categories.

Source : Ministry of Economy, Trade and Industry (METI) Current Production Statistics Survey, Japan Bicycle Promotion Institute Processing and Analysis

Chart G shows a graphic presentation of the eleven year history of twelve-month year to date unit production by category based on Table 8. This chart shows that "Light bicycles" are decreasing, and "Electric power assist" is increasing.

Chart G
Eleven-year history of Twelve-Month Year to Date unit production by category



Source : Ministry of Economy, Trade and Industry (METI) Current Production Statistics Survey, Japan Bicycle Promotion Institute Processing and Analysis

3. Japanese bicycle import

Bicycle import by category is mentioned below. To begin with, import categories and HS numbers in Japan are classified as follows. "Electric power assist bicycles" is not classified as a single category and is included in the category of "Other motorcycles" in Trade Statistics. Please note that "Other motorcycles" includes all motorcycles which are not classified in the upper layer and all electric motorcycles.

Table 9 Import categories and HS numbers

HS number and product category	Bicycle type
8712.00100 Mountain bikes	<ul style="list-style-type: none"> • MTB(includes V brake or disk brake equipped) • Cross bikes
8712.00211 Mini-cycles	<ul style="list-style-type: none"> • Mini-cycles • Small wheel foldable bicycles • BMX
8712.00218 Infant bicycles	<ul style="list-style-type: none"> • Infant bicycles(12 – 16 inch) • Toy bicycles(12 inch two wheel) • Unicycles(12 – 16 inch)
8712.00219 Children bicycles	<ul style="list-style-type: none"> • Children bicycles(18 – 24 inch) • Junior MTB(18 – 24 inch) • Unicycles(18 – 24 inch)
8712.00291 Light bicycles	<ul style="list-style-type: none"> • Light bicycles(excludes outer derailleur equipped) • Single speed, sports use bicycles equipped with inner derailleur.
8712.00299 Miscellaneous	<ul style="list-style-type: none"> • Sports use bicycles • Light bicycles equipped with outer derailleur • Junior MTB(26 inch)
8711.90000 Other Motorcycles	<ul style="list-style-type: none"> • Other Motorcycles (including mopeds) and cycles fitted with an auxiliary motor, with or without side-cars; side-cars. Electric power assist bicycles are included.

Source : Japan Bicycle Promotion Institute

3 – 1 Outline of twelve-month year to date 2016 bicycle import

Table 10 shows Japanese bicycle import of all product categories excluding “Other Motorcycles” in twelve-month year to date 2016 compared to the same period of 2015. Total units is 6,849,385, 3.8% decrease compared to the same period of 2015. On the other hand, total CIF value is JPY76,544,934 thousands, decreases by 18.0% compared to the same period of 2015, resulted in average CIF unit value of JPY11,175, 14.7% decrease.

The currency exchange rate is investigated. The average dollar-yen exchange rate during twelve-month year to date 2015 was US\$1=JPY121.00; however, it gets US\$1=JPY108.95 in twelve-month year to date 2016(Refer chief custom inspector published rate). JPY gets stronger. This change might be one of the reasons of decrease of Total CIF Value and Average CIF unit value.

Table 10 Japanese bicycle import:
Twelve-Month Year to Date 2016 compared to Twelve-Month Year to Date 2015

	Total units	Total CIF Value (JPY thousand)	Average CIF unit value(JPY)
12 month YTD 2016	6,849,385	76,544,934	11,175
12 month YTD 2015	7,122,444	93,348,703	13,106
Variance	-273,059	-16,803,769	-1,931
Variance %	-3.8	-18.0	-14.7

Source : Ministry of Finance Japan (MOF) Trade Statistics of Japan,
Japan Bicycle Promotion Institute Processing and Analysis

Table 10 Annex shows Twelve-Month Year to Date 2016 import of “Other Motorcycles” compared to the same period of 2015 for reference.

Table 10 Annex (Reference) Japanese import of “Other Motorcycles”:
Twelve-Month Year to Date 2016 compared to Twelve-Month Year to Date 2015

	Total units	Total CIF Value (JPY thousand)	Average CIF unit value(JPY)
12 month YTD 2016	98,479	3,066,752	31,141
12 month YTD 2015	51,577	2,181,778	42,301
Variance	46,902	884,974	-11,160
Variance %	90.9	40.6	-26.4

Source : Ministry of Finance Japan (MOF) Trade Statistics of Japan,
Japan Bicycle Promotion Institute Processing and Analysis

3 – 2 Twelve-month year to date 2016 bicycle import by category

Table 11 shows twelve-month year to date 2016 Japanese bicycle import by category.

Table 11
Japanese bicycle import in Twelve-Month Year to Date 2016 by category

HS number and category	Total units	Total CIF Value (JPY thousand)	Average CIF unit value(JPY)
8712.00100 Mountain bikes	176,823	3,608,670	20,408
8712.00211 Mini-cycles	157,870	2,142,110	13,569
8712.00218 Infant bicycles	538,880	3,674,960	6,820
8712.00219 Children bicycles	1,690,152	14,825,364	8,772
8712.00291 Light bicycles	2,129,712	19,305,368	9,065
8712.00299 Miscellaneous	2,155,948	32,988,462	15,301
Total	6,849,385	76,544,934	11,175

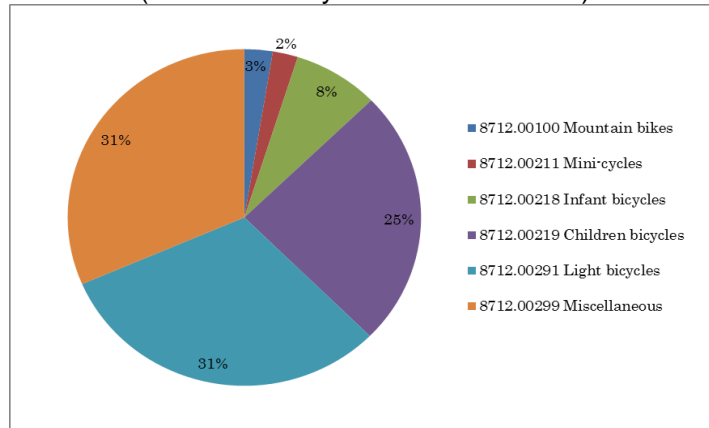
8711.90000 Other Motorcycles	98,479	3,066,752	31,141
------------------------------	--------	-----------	--------

Source : Ministry of Finance Japan (MOF) Trade Statistics of Japan,
Japan Bicycle Promotion Institute Processing and Analysis

The average CIF unit value of 8712.00100 “Mountain bikes” is JPY 20,408, the highest among the categories except for “Other Motorcycles”. The unit volume of HS8712.00291 “Light bicycles” used to be the biggest; however, HS8712.00299 “Miscellaneous” which includes sports use bicycles and light bicycles equipped with outer derailleur now counts more. Average CIF unit value of “Light bicycles” is JPY 9,065. The unit volume and total CIF value of HS8712.00299 “Miscellaneous” are the highest among the categories. Its average CIF unit value is JPY 15,301. The unit volume of “Miscellaneous” surpasses that of “Light bicycles”. When looking at the past several years trend, it is better to say that it happens because “Light bicycles” decreases rather than “Miscellaneous” increases. Table 15 and Chart N show these movements later in this report.

Chart H shows a graphic presentation of twelve-month year to date 2016 Japanese bicycle import unit share by category based on Table 11. “Miscellaneous” captures 31% share and “Light bicycles” captures 31% share as well.

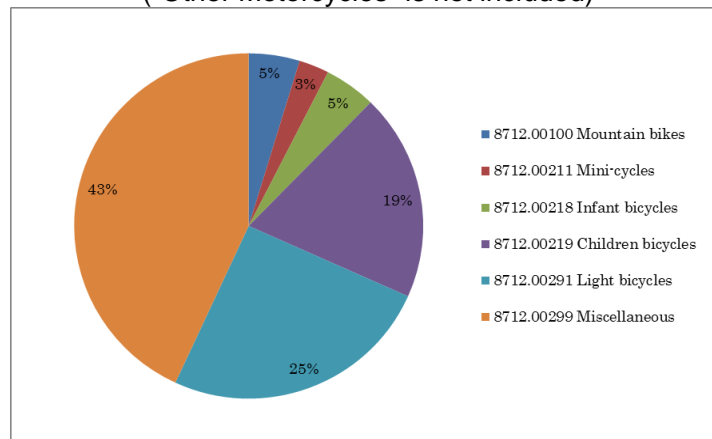
Chart H
 Twelve-Month YTD2016 Japanese bicycle import: Unit share by category
 (“Other Motorcycles” is not included)



Source : Ministry of Finance Japan (MOF) Trade Statistics of Japan,
 Japan Bicycle Promotion Institute Processing and Analysis

Chart I shows a graphic presentation of twelve-month year to date 2016 Japanese bicycle import value share by category also based on Table 11. “Miscellaneous” captures 43% and “Light bicycles” captures 25% share.

Chart I
 Twelve-Month YTD2016 Japanese bicycle import: Value share by category
 (“Other Motorcycles” is not included)



Source : Ministry of Finance Japan (MOF) Trade Statistics of Japan,
 Japan Bicycle Promotion Institute Processing and Analysis

Table 12 shows a twelve-month year to date 2016 Japanese bicycle import by category compared to the same period of the previous year.

Table 12 Twelve-Month Year to Date 2016 Japanese bicycle import by category compared to Twelve-Month Year to Date 2015

12 month YTD	2016		2015		Variance %	
	units	Total CIF value (JPY thousand)	units	Total CIF value (JPY thousand)	Units	CIF value
8712.00100 Mountain bikes	176,823	3,608,670	219,152	5,542,567	-19.3%	-34.9%
8712.00211 Mini-cycles	157,870	2,142,110	142,150	1,952,264	11.1%	9.7%
8712.00218 Infant bicycles	538,880	3,674,960	520,523	4,052,527	3.5%	-9.3%
8712.00219 Children bicycles	1,690,152	14,825,364	1,675,477	17,563,032	0.9%	-15.6%
8712.00291 Light bicycles	2,129,712	19,305,368	2,318,196	24,380,608	-8.1%	-20.8%
8712.00299 Miscellaneous	2,155,948	32,988,462	2,246,946	39,857,705	-4.0%	-17.2%
Total	6,849,385	76,544,934	7,122,444	93,348,703	-3.8%	-18.0%
Average unit price (JPY)		11,175		13,106		-14.7%

8711.90000 Other Motorcycles	98,479	3,066,752	51,577	2,181,778	90.9%	40.6%
Average unit price (JPY)		31,141		42,301		-26.4%

Source : Ministry of Finance Japan (MOF) Trade Statistics of Japan, Japan Bicycle Promotion Institute Processing and Analysis

“Mini-cycles”, “Infant bicycles” and “Children bicycles” increase in units, on the other hand, “Mountain bikes”, “Light bicycles” and “Miscellaneous” decrease in units. Import value of “Mini-cycles” increases; however, all other categories show decrease in import value.

3 – 3 Fifteen year history of twelve-month year to date bicycle import

Table 13 shows a fifteen year history of twelve-month year to date Japanese bicycle import.

Table 13 Fifteen-year history of Twelve-Month Year to Date Japanese bicycle import: All categories (“Other Motorcycles” is not included)

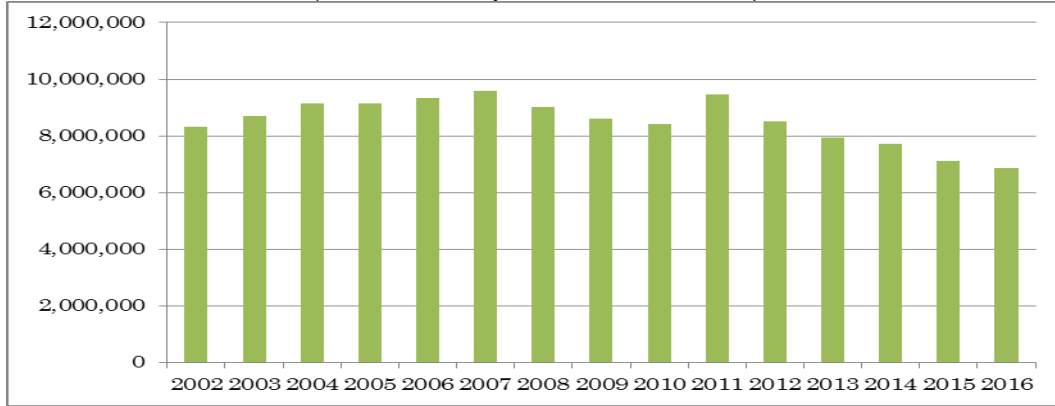
12 month YTD	Total import units	Total CIF value (JPY thousand)	Average CIF unit value (JPY)
2016	6,849,385	76,544,934	11,175
2015	7,122,444	93,348,703	13,106
2014	7,734,364	86,330,265	11,162
2013	7,932,395	80,110,588	10,099
2012	8,499,444	72,777,306	8,563
2011	9,450,592	74,541,580	7,888
2010	8,401,946	64,891,050	7,723
2009	8,621,717	70,434,052	8,169
2008	9,033,773	78,142,462	8,650
2007	9,603,314	74,875,361	7,797
2006	9,339,172	65,768,000	7,042
2005	9,143,819	58,146,512	6,359
2004	9,138,411	54,913,763	6,009
2003	8,702,626	55,148,720	6,337
2002	8,326,093	57,030,476	6,850

Source : Ministry of Finance Japan (MOF) Trade Statistics of Japan, Japan Bicycle Promotion Institute Processing and Analysis

Total unit import in twelve-month year to date 2016 is the lowest in the last fifteen years. On the other hand, total CIF value in twelve-month year to date 2016 is the fifth highest in this history; make the average CIF unit value JPY 11,175, the second highest in this period.

Chart J shows the fifteen year history of twelve-month year to date total import units based on Table 13.

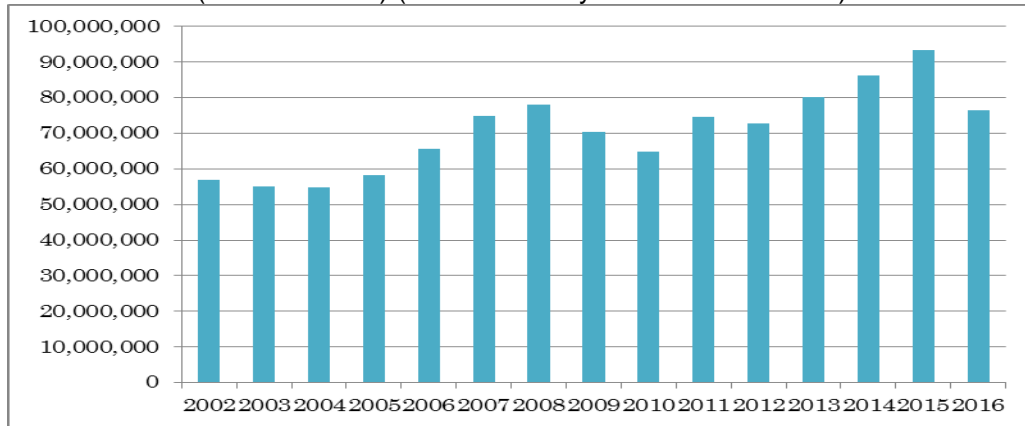
Chart J
Fifteen year history of Twelve-Month YTD total Japanese bicycle unit import (units)
("Other Motorcycles" is not included)



Source : Ministry of Finance Japan (MOF) Trade Statistics of Japan,
Japan Bicycle Promotion Institute Processing and Analysis

Chart K shows the fifteen year history of twelve-month year to date total import CIF value also based on Table 13.

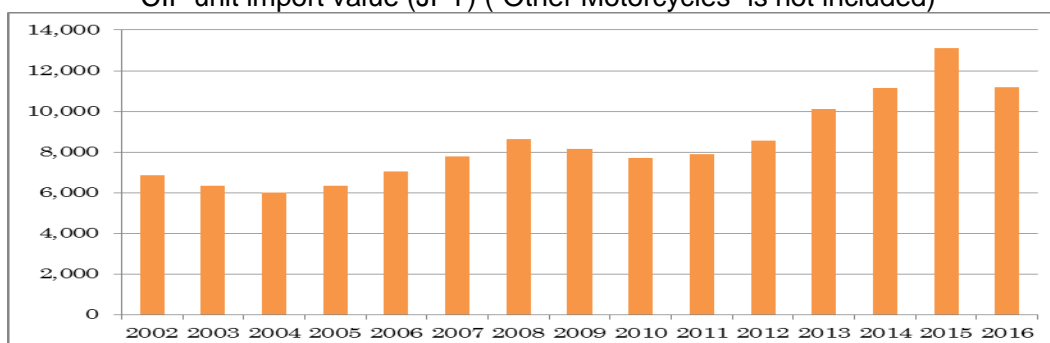
Chart K Fifteen year history of Twelve-Month YTD total Japanese bicycle import CIF value
(JPY thousand) ("Other Motorcycles" is not included)



Source : Ministry of Finance Japan (MOF) Trade Statistics of Japan,
Japan Bicycle Promotion Institute Processing and Analysis

Chart L shows the fifteen year history of twelve-month year to date average CIF unit import value also based on Table 13.

Chart L Fifteen year history of Twelve-Month YTD Japanese bicycle average CIF unit import value (JPY) (“Other Motorcycles” is not included)



Source : Ministry of Finance Japan (MOF) Trade Statistics of Japan,
Japan Bicycle Promotion Institute Processing and Analysis

Table 14 shows the total unit import by month.

Table 14 Fifteen year history of total import units by month:
 (“Other Motorcycles” is not included)

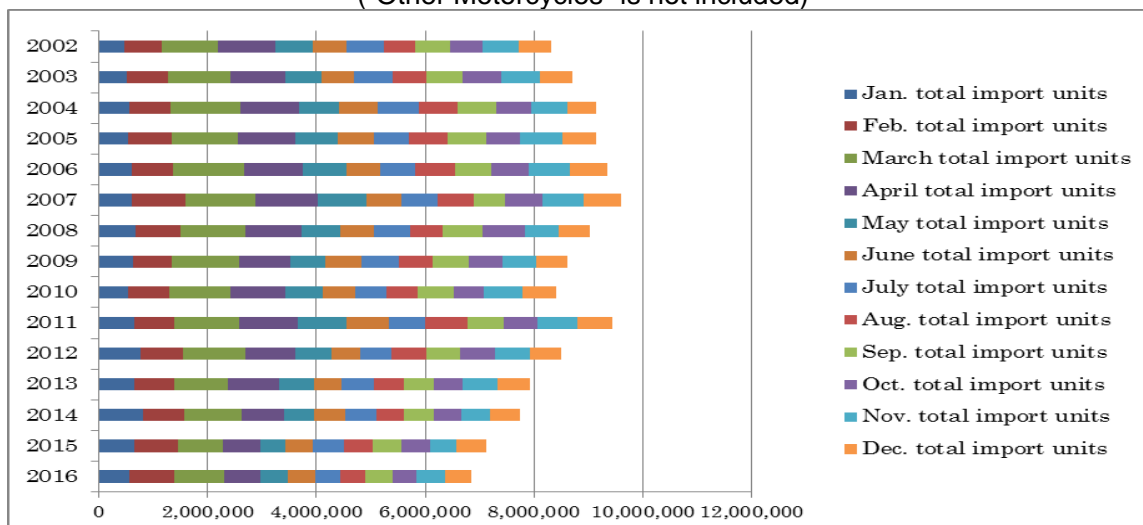
Year	January total import units	February total import units	March total import units	April total import units	May total import units	June total import units
2016	559,379	823,009	916,762	673,000	493,417	507,531
2015	639,107	809,453	828,696	690,064	462,606	510,639
2014	800,012	758,904	1,067,576	783,049	546,090	581,432
2013	646,439	729,345	997,586	949,665	634,542	514,285
2012	759,838	779,645	1,156,072	904,565	672,252	525,908
2011	661,234	725,936	1,192,986	1,067,890	915,243	768,659
2010	529,116	759,113	1,140,340	1,002,806	691,515	600,223
2009	631,533	717,828	1,226,863	932,220	660,802	652,693
2008	679,048	809,921	1,195,076	1,041,042	718,439	623,626
2007	613,892	988,006	1,275,167	1,152,734	890,124	644,144
2006	602,545	765,063	1,303,124	1,075,231	796,610	633,795
2005	541,343	796,348	1,226,300	1,056,187	777,336	669,039
2004	556,120	767,570	1,280,277	1,081,557	727,411	723,301
2003	504,267	764,381	1,145,964	1,015,772	655,917	610,329
2002	462,594	682,561	1,051,785	1,037,903	705,257	618,883

year	July total import units	Aug. total import units	Sep. total import units	Oct. total import units	Nov. total import units	Dec. total import units	YTD total import units
2016	460,740	464,093	509,475	438,628	518,622	484,729	6,849,385
2015	556,279	542,763	524,133	519,919	484,170	554,615	7,122,444
2014	572,129	504,218	543,409	502,832	540,165	534,548	7,734,364
2013	595,336	535,046	561,806	528,767	640,332	599,246	7,932,395
2012	586,024	629,284	631,719	642,217	649,625	562,295	8,499,444
2011	675,783	776,045	655,654	629,958	722,052	659,152	9,450,592
2010	562,581	582,646	663,734	546,459	719,973	603,440	8,401,946
2009	685,910	619,872	677,716	623,646	620,796	571,838	8,621,717
2008	646,395	612,531	729,659	770,349	625,626	582,061	9,033,773
2007	672,070	649,954	586,098	688,807	741,855	700,463	9,603,314
2006	643,767	724,797	673,445	684,487	767,415	668,893	9,339,172
2005	626,723	720,123	708,659	631,378	780,371	610,012	9,143,819
2004	755,089	715,190	699,179	653,057	648,234	531,426	9,138,411
2003	694,160	623,008	684,831	710,079	691,745	602,173	8,702,626
2002	678,438	585,452	634,374	597,460	671,907	599,479	8,326,093

Source : Ministry of Finance Japan (MOF) Trade Statistics of Japan,
Japan Bicycle Promotion Institute Processing and Analysis

Chart M shows a graphic presentation of the fifteen year history of total import units by month based on Table 14.

Chart M Fifteen year history of total Japanese bicycle import by month (units)
("Other Motorcycles" is not included)



Source : Ministry of Finance Japan (MOF) Trade Statistics of Japan,
Japan Bicycle Promotion Institute Processing and Analysis

Table 15 shows a fifteen year history of twelve-month year to date Japanese bicycle unit import by category.

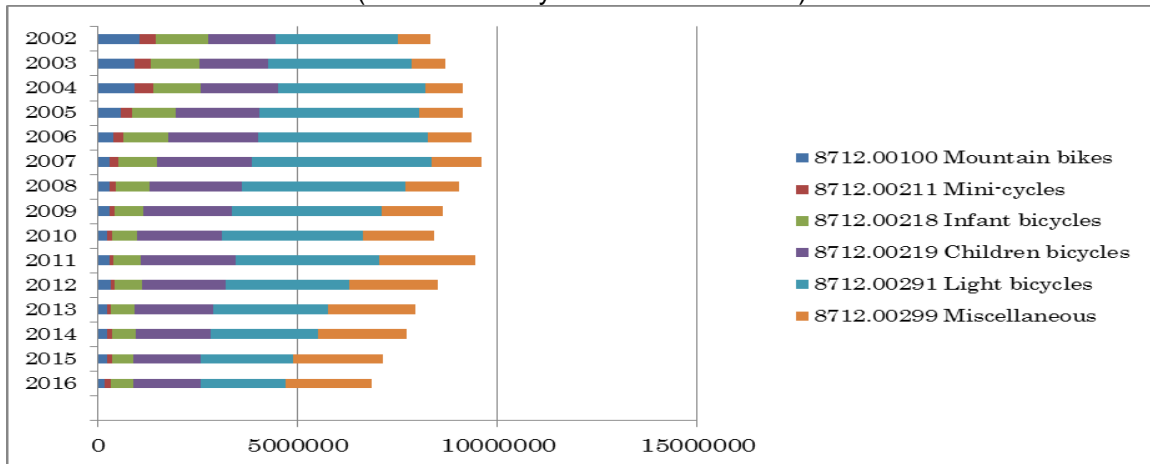
Table 15
Fifteen-year history of Twelve-Month Year to Date Japanese bicycle unit import
by categories ("Other Motorcycles" is not included)

	8712.00100 Mountain bikes	8712.00211 Mini-cycles	8712.00218 Infant bicycles	8712.00219 Children bicycles	8712.00291 Light bicycles	8712.00299 Miscellaneous	Total
2016	176,823	157,870	538,880	1,690,152	2,129,712	2,155,948	6,849,385
2015	219,152	142,150	520,523	1,675,477	2,318,196	2,246,946	7,122,444
2014	227,054	130,205	581,229	1,881,428	2,682,510	2,231,938	7,734,364
2013	219,848	99,363	585,485	1,966,906	2,881,192	2,179,601	7,932,395
2012	325,828	92,405	692,111	2,075,504	3,094,262	2,219,334	8,499,444
2011	288,094	110,599	658,735	2,387,853	3,608,216	2,397,095	9,450,592
2010	225,716	124,094	613,003	2,133,052	3,526,359	1,779,722	8,401,946
2009	300,708	118,241	718,801	2,210,631	3,744,364	1,528,972	8,621,717
2008	296,984	157,596	832,968	2,299,371	4,106,823	1,340,031	9,033,773
2007	289,270	213,917	986,539	2,368,441	4,481,866	1,263,281	9,603,314
2006	376,390	263,380	1,134,179	2,236,065	4,247,509	1,081,599	9,339,122
2005	576,127	278,403	1,091,848	2,105,760	4,000,024	1,091,657	9,143,819
2004	904,165	476,528	1,196,247	1,928,895	3,675,231	957,345	9,138,411
2003	929,832	398,388	1,203,448	1,735,536	3,571,855	863,567	8,702,626
2002	1,038,877	411,716	1,318,150	1,690,663	3,042,743	823,944	8,326,093

Source : Ministry of Finance Japan (MOF) Trade Statistics of Japan,
Japan Bicycle Promotion Institute Processing and Analysis

Chart N shows these import history.

Chart N
Fifteen year history of Twelve-Month YTD Japanese bicycle unit import by category (units)
("Other Motorcycles" is not included)



Source : Ministry of Finance Japan (MOF) Trade Statistics of Japan,
Japan Bicycle Promotion Institute Processing and Analysis

Table 16 shows a fifteen year history of twelve-month year to date Japanese "Other Motorcycle" import for reference.

Table 16 (Reference)
Fifteen year history of Twelve-Month YTD Japanese "Other Motorcycle" import

12 month YTD	Total import units	Total CIF value (JPY thousand)	Average CIF unit value(JPY)
2016	98,479	3,066,752	31,141
2015	51,577	2,181,778	42,301
2014	55,407	2,274,630	41,053
2013	68,576	2,419,613	35,284
2012	56,926	1,790,778	31,458
2011	64,495	1,739,538	26,972
2010	81,562	2,019,273	24,758
2009	78,574	1,857,783	23,644
2008	62,653	1,406,288	22,446
2007	77,154	1,897,038	24,588
2006	91,244	1,694,266	18,569
2005	99,138	1,720,981	17,359
2004	129,625	1,905,545	14,700
2003	289,750	2,178,050	7,517
2002	511,632	3,404,782	6,655

Source : Ministry of Finance Japan (MOF) Trade Statistics of Japan,
Japan Bicycle Promotion Institute Processing and Analysis

3 – 4 Main source country/area of Japanese bicycle import

Table 17 shows source countries and areas of twelve-month year to date 2016 Japanese bicycle import.

Table 17 Main source countries and areas of Japanese bicycle import in Twelve-Month Year to Date 2016 (“Other Motorcycles” is not included)

Source country/area	Total units	% share of total units	Total CIF Value (JPY thousand)	% share of total value	Average CIF unit value(JPY)
China	6,616,349	96.6	63,829,782	83.4	9,647
Taiwan	213,965	3.1	11,305,944	14.8	52,840
Others	19,071	0.3	1,409,208	1.8	73,893
Total	6,849,385	100.0	76,544,934	100.0	11,175

Source : Ministry of Finance Japan (MOF) Trade Statistics of Japan, Japan Bicycle Promotion Institute Processing and Analysis Due to round off, Total may not match.

“China” continues to be the biggest source country. It captures 96.6% of total units, and 83.4% of total CIF value. The average CIF unit value is JPY 9,647. “Taiwan” follows “China”, capturing 3.1% of total units, and 14.8% of total CIF value. The average CIF unit value is JPY 52,840. These two combined capture 99.7% of total units and 98.2% of total CIF value.

Table 18 shows Japanese bicycle import from “China” by category.

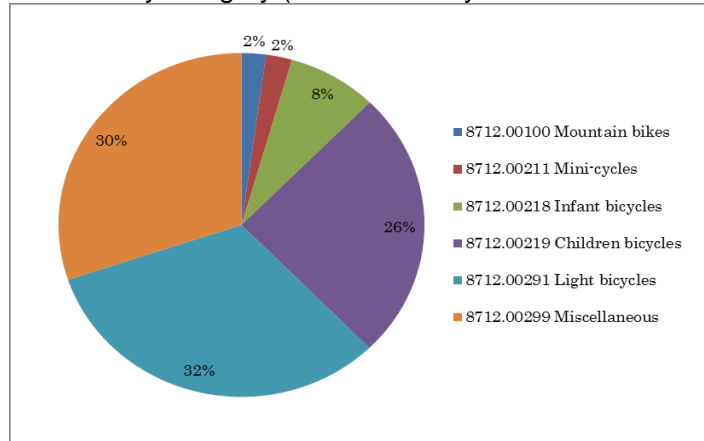
Table 18 Japanese bicycle import from “China” in Twelve-Month Year to Date 2016 by category (“Other Motorcycles” is not included)

HS number and category	Total units	Total CIF Value (JPY thousand)	Average CIF unit value(JPY)
8712.00100 Mountain bikes	143,230	2,273,119	15,870
8712.00211 Mini-cycles	151,592	1,870,131	12,337
8712.00218 Infant bicycles	523,998	3,358,521	6,409
8712.00219 Children bicycles	1,673,906	14,433,215	8,622
8712.00291 Light bicycles	2,127,610	19,237,391	9,042
8712.00299 Miscellaneous	1,996,013	22,657,405	11,351
Total	6,616,349	63,829,782	9,647

Source : Ministry of Finance Japan (MOF) Trade Statistics of Japan, Japan Bicycle Promotion Institute Processing and Analysis

Chart O shows a graphic presentation of twelve-month year to date 2016 Japanese bicycle import unit share from “China” by category based on Table 18. “Light bicycles” captures 32% share, then “Miscellaneous” follows capturing 30% share. Unit import volume from “China” is so huge; therefore, this chart looks similar to Chart H which shows Japanese total unit import share by category.

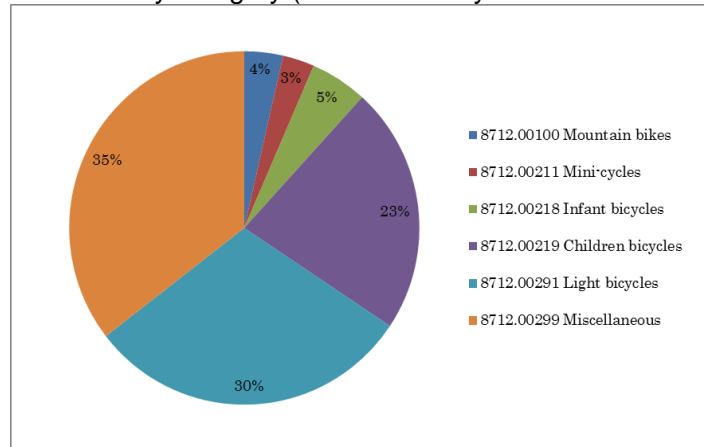
Chart O Twelve-Month YTD2016 Japanese bicycle import from “China”:
Unit share by category (“Other Motorcycles” is not included)



Source : Ministry of Finance Japan (MOF) Trade Statistics of Japan,
Japan Bicycle Promotion Institute Processing and Analysis

Chart P shows a graphic presentation of twelve-month year to date 2016 Japanese bicycle import value share from “China” by category also based on Table 18. “Miscellaneous” captures 35 % share and “Light bicycles” follows capturing 30% share.

Chart P Twelve-Month YTD2016 Japanese bicycle import from “China”:
Value share by category (“Other Motorcycles” is not included)



Source : Ministry of Finance Japan (MOF) Trade Statistics of Japan,
Japan Bicycle Promotion Institute Processing and Analysis

Then, Table 19 follows to show Japanese bicycle import from “Taiwan” by category.

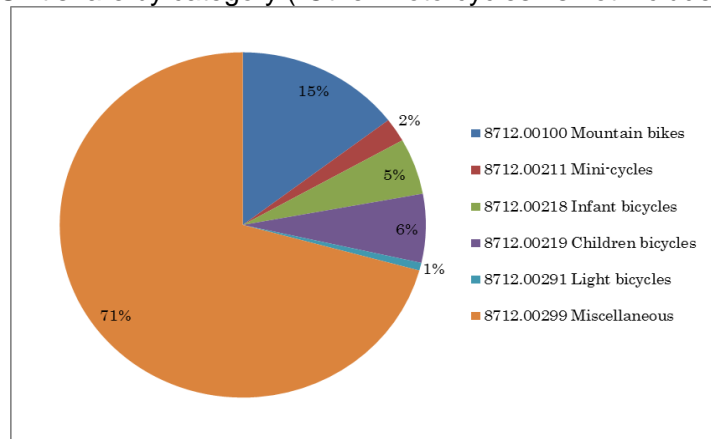
Table 19 Japanese bicycle import from “Taiwan” in Twelve-Month Year to Date 2016 by category (“Other Motorcycles” is not included)

HS number and category	Total units	Total CIF Value (JPY thousand)	Average CIF unit value(JPY)
8712.00100 Mountain bikes	31,284	1,196,909	38,259
8712.00211 Mini-cycles	4,764	149,368	31,353
8712.00218 Infant bicycles	11,245	91,354	8,124
8712.00219 Children bicycles	13,746	278,967	20,294
8712.00291 Light bicycles	1,545	50,471	32,667
8712.00299 Miscellaneous	151,381	9,538,875	63,012
Total	213,965	11,305,944	52,840

Source : Ministry of Finance Japan (MOF) Trade Statistics of Japan, Japan Bicycle Promotion Institute Processing and Analysis

Chart Q shows a graphic presentation of twelve-month year to date 2016 Japanese bicycle import unit share from “Taiwan” by category based on Table 19. This chart looks totally different from Chart H which shows total import or Chart O which shows import from “China”. “Miscellaneous” captures 71% big share and “Mountain Bikes” follows to capture 15% share. On the other hand, “Light bicycles” only captures 1% share.

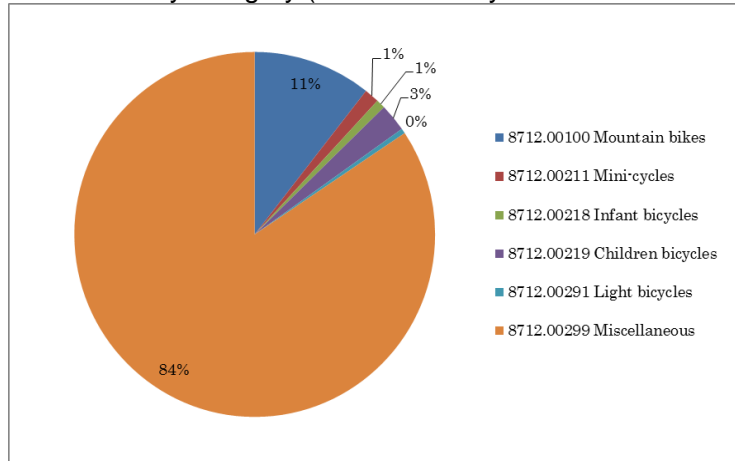
Chart Q Twelve-Month YTD2016 Japanese bicycle import from “Taiwan”: Unit share by category (“Other Motorcycles” is not included)



Source : Ministry of Finance Japan (MOF) Trade Statistics of Japan, Japan Bicycle Promotion Institute Processing and Analysis

Moreover, Chart R shows a graphic presentation of twelve-month year to date 2016 Japanese bicycle import value share from “Taiwan” by category also based on Table 19. The characteristics appear more remarkably than the unit import share. “Miscellaneous” captures big 84% share and “Mountain Bikes” follows capturing 11% share. The share of “Light bicycles” is very small.

Chart R Twelve-Month YTD2016 Japanese bicycle import from “Taiwan”:
Value share by category (“Other Motorcycles” is not included)



Source : Ministry of Finance Japan (MOF) Trade Statistics of Japan,
Japan Bicycle Promotion Institute Processing and Analysis

Then, Table 20 shows source countries and areas of twelve-month year to date 2016 Japanese “Other Motorcycles” import for reference.

Table 20 (Reference) Main source countries and areas of Japanese
“Other Motorcycles” import in Twelve-Month Year to Date 2016 compared to 2015

Source country/area	Total units	% share of total units	Total CIF Value (JPY thousand)	% share of total value	Average CIF unit value(JPY)
12 month YTD 2016 China	97,573	99.1	2,854,788	93.1	29,258
12 month YTD 2015 China	49,802	96.6	1,848,106	84.7	37,109
Variance %	47,771	2.5	1,006,682	8.4	-7,851
12 month YTD 2016 Taiwan	634	0.6	95,547	3.1	150,705
12 month YTD 2015 Taiwan	1,613	3.1	258,585	11.9	160,313
Variance %	-979	-2.5	-163,038	-8.7	-9,608
12 month YTD 2016 Others	272	0.3	116,417	3.8	428,004
12 month YTD 2015 Others	162	0.3	75,087	3.4	463,500
Variance %	110	0.0	41,330	0.4	-35,496
12 month YTD 2016 Total	98,479	100.0	3,066,752	100.0	31,141
12 month YTD 2015 Total	51,577	100.0	2,181,778	100.0	42,301
Variance %	46,902	0.0	884,974	0.0	-11,160

Source : Ministry of Finance Japan (MOF) Trade Statistics of Japan,
Japan Bicycle Promotion Institute Processing and Analysis Due to round off, Total may not match.

4. Domestic unit volume

Almost all of the Japanese bicycle export is used bicycle export to developing countries. Therefore, production units plus import units can be defined as domestic unit volume. Table 21 shows an eleven year history of twelve-month year to date domestic unit volume. In this period, unit production and unit import can be compared. Twelve-Month Year to Date 2016 domestic unit volume is 7,793,154, the lowest in the last eleven years. And its domestic production ratio is 12.1%.

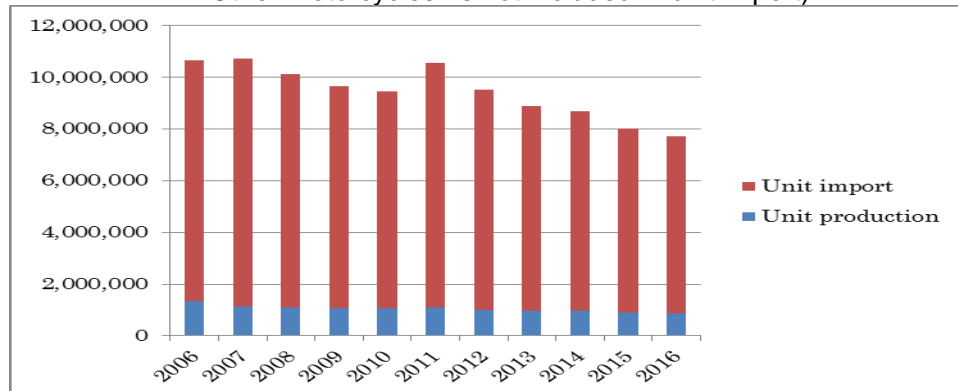
Table 21 Eleven-year history of Twelve-Month Year to Date Japanese bicycle domestic unit volume
 (“Electric power assist bicycles” is included in unit production;
 “Other Motorcycles” is not included in unit import)

12 month YTD	Unit production	Unit import	Domestic unit volume	Domestic production ratio %
2016	943,769	6,849,385	7,793,154	12.1
2015	898,095	7,122,444	8,020,539	11.2
2014	952,068	7,734,364	8,686,432	11.0
2013	962,206	7,932,395	8,894,601	10.8
2012	1,012,314	8,499,444	9,511,758	10.6
2011	1,101,666	9,450,592	10,552,258	10.4
2010	1,056,951	8,401,946	9,458,897	11.2
2009	1,049,469	8,621,717	9,671,186	10.9
2008	1,094,932	9,033,773	10,128,705	10.8
2007	1,135,606	9,603,314	10,738,920	10.6
2006	1,334,512	9,339,122	10,673,634	12.5

Source : Ministry of Economy, Trade and Industry (METI) Current Production Statistics Survey
 (Before 2015 figure is revised)
 Ministry of Finance Japan (MOF) Trade Statistics of Japan,
 Japan Bicycle Promotion Institute Processing and Analysis

Chart S is the graphic presentation of this history.

Chart S Eleven year history of Twelve-Month YTD domestic bicycle unit volume (units)
 (“Electric power assist bicycles” is included in unit production;
 “Other Motorcycles” is not included in unit import)



Source : Ministry of Economy, Trade and Industry (METI) Current Production Statistics Survey
 (Before 2015 figure is revised)
 Ministry of Finance Japan (MOF) Trade Statistics of Japan,
 Japan Bicycle Promotion Institute Processing and Analysis

5. Japanese bicycle export

Almost all of the Japanese bicycle export is used bicycle export to developing countries. Table 22 shows main destination countries and areas of Japanese bicycle export in twelve-month year to date 2016. Average FOB unit value clearly proves that the bicycle export is used bicycle export. In this part of the report, “Other Motorcycles” is excluded.

Table 22 Twelve-Month YTD 2016 Japanese bicycle export
by destination countries and areas

Destination country/area	Total units	Total FOB value (JPY thousand)	Average FOB unit value(JPY)
Myanmar	503,809	727,780	1,445
Ghana	471,968	719,943	1,525
Afghanistan	353,181	488,303	1,383
Cambodia	350,770	572,489	1,632
Tanzania	305,070	611,977	2,006
Iraq	208,697	436,698	2,092
Nigeria	178,502	307,919	1,725
UAE	176,770	290,332	1,642
Philippines	153,346	249,176	1,625
Thailand	121,245	302,290	2,493
Others	338,064	682,929	2,020
Total	3,161,422	5,389,836	1,705

Source : Ministry of Finance Japan (MOF) Trade Statistics of Japan,
Japan Bicycle Promotion Institute Processing and Analysis

Table 23 shows a fifteen year history of twelve-month year to date Japanese bicycle export from 2002 to 2016. Total units are the third largest and total value is the second highest in the last fifteen years. The average unit value in twelve-month year to date 2016 is JPY 1,705, also the second highest in the last fifteen years.

Table 23 Fifteen-year history of Twelve-Month Year to Date Japanese bicycle export:
All categories

12 month YTD	Total units	Total FOB value (JPY thousand)	Average FOB unit value (JPY)
2016	3,161,422	5,389,836	1,705
2015	3,558,029	6,475,518	1,820
2014	3,301,193	5,128,144	1,553
2013	3,142,282	4,320,542	1,375
2012	2,980,626	3,863,945	1,296
2011	2,676,620	3,505,035	1,310
2010	2,393,342	3,180,711	1,329
2009	2,214,528	3,000,068	1,355
2008	2,283,080	3,773,228	1,653
2007	2,095,644	3,028,212	1,445
2006	1,340,136	1,467,329	1,095
2005	1,221,802	1,364,928	1,117
2004	1,009,023	1,259,526	1,248
2003	865,478	1,151,778	1,331
2002	646,597	828,013	1,281

Source : Ministry of Finance Japan (MOF) Trade Statistics of Japan,
Japan Bicycle Promotion Institute Processing and Analysis