

## Japanese bicycle production, import and export (Three-Month Year to Date 2016)

### 1. Preface

The purpose of this report is to show the Japanese bicycle market trend through comprehensive investigation of the Japanese bicycle production, import and export. First, the production of the domestic bicycle manufacturers will be clarified using Ministry of Economy, Trade and Industry (METI) Current Production Statistics, and total production activities including shipment, inventories and time series trend will be explained. Second, due to the current big share of import bicycles in the Japanese bicycle market, bicycle import will be investigated by categories and by time series using Ministry of Finance Japan (MOF) Trade Statistics, and general bicycle market trend will be grasped. Then, comprehensive Japanese bicycle market trend including bicycle production becomes clear. Finally, Japanese bicycle export which is now mostly used bicycle export will be briefly referenced.

During three-month Year to Date 2016, unit production increases when compared to the same period of 2015 due to the recovery of “Electric power assist” production. As to import, the value turns to decrease during the three-month YTD 2016 when compared to the same period of 2015. This may be affected by the currency exchange rate which in this period JPY gets stronger compared to three-month YTD 2015. However, unit import increases a little when compared to the same period of the previous year. Also, it is noticed that import share from “China” increases, on the contrary, that of “Taiwan” decreases correspondently.

### 2. Japanese bicycle production

#### **2 – 1 Outline of three-month year to date 2016 bicycle production**

According to Ministry of Economy, Trade and Industry (METI) Current Production Statistics Survey, Japanese complete bicycle production in three-month year to date 2016 is 265,325 units, and JPY 14,805million. Table 1 shows that total unit production increases 6.2%, and total production value also increases 21.8%, great increase, compared to the same period of the previous year. Average production unit value in three-month year to date 2016 is up14.7% from JPY 48,656 in 2015 to JPY 55,799 in 2016.

Table 1 Three-Month Year to Date 2016 Japanese bicycle production

	Total Units	Total Production Value(JPY million)	Average Unit Value(JPY)
3 month YTD 2016	265,325	14,805	55,799
3 month YTD 2015	249,855	12,157	48,656
Variance	15,470	2,648	7,143
Variance%	6.2%	21.8%	14.7%

Source : Ministry of Economy, Trade and Industry (METI) Current Production Statistics Survey (2014 figure is revised) Japan Bicycle Promotion Institute Processing and Analysis

Table 2 shows the detail by product category of Japanese bicycle production during the three-month year to date 2016 compared to the same period of 2015. “Electric power assist” shows increase.

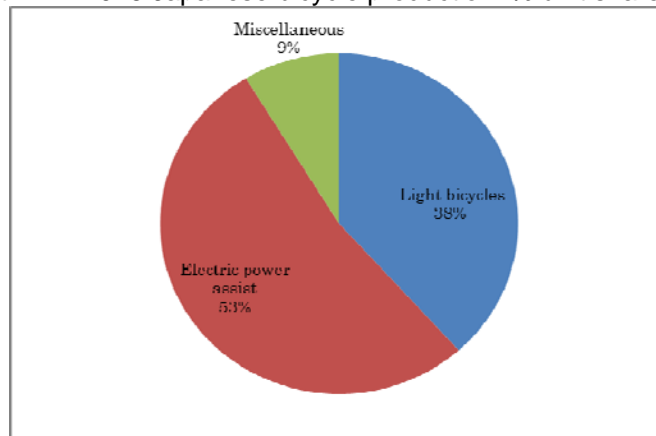
Table 2 Production by category:  
Three-Month Year to Date 2016 compared to Three-Month Year to Date 2015

3 month YTD	2016		2015		Variance			
	units	Value(JPY million)	units	Value(JPY million)	units	%	Value (JPY million)	%
Light bicycles	101,751	2,831	102,324	2,716	-573	-0.6	115	4.2
Electric power assist	140,426	11,301	118,751	8,556	21,675	18.3	2,745	32.1
Miscellaneous	23,148	672	28,780	885	-5,632	-19.6	-213	-24.1
<b>Total</b>	<b>265,325</b>	<b>14,805</b>	<b>249,855</b>	<b>12,157</b>	<b>15,470</b>	<b>6.2</b>	<b>2,648</b>	<b>21.8</b>

Source : Ministry of Economy, Trade and Industry (METI) Current Production Statistics Survey  
(2015 figure is revised) Japan Bicycle Promotion Institute Processing and Analysis  
Due to round off, Total may not match.

Chart A shows a graphic presentation of three-month year to date 2016 Japanese bicycle unit production share by category based on Table 2. “Electric power assist” captures 53% share, and “Light bicycles” follows capturing 38% share.

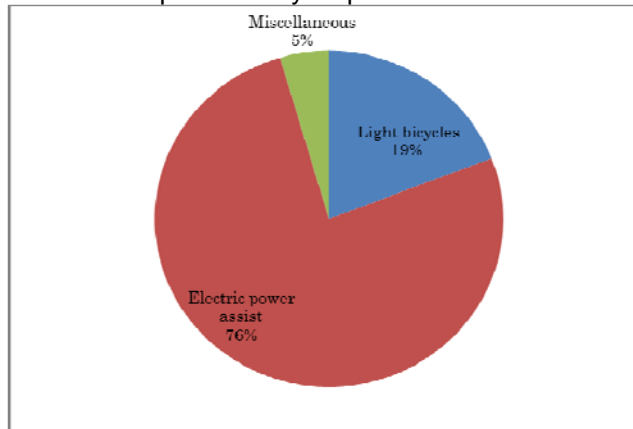
Chart A  
Three-Month YTD2016 Japanese bicycle production: % unit share by category



Source : Ministry of Economy, Trade and Industry (METI) Current Production Statistics Survey,  
Japan Bicycle Promotion Institute Processing and Analysis

Chart B shows a graphic presentation of three-month year to date 2016 Japanese bicycle production value share by category also based on Table 2. “Electric power assist” captures 76% share.

Chart B  
Three-Month YTD2016 Japanese bicycle production: % value share by category



Source : Ministry of Economy, Trade and Industry (METI) Current Production Statistics Survey, Japan Bicycle Promotion Institute Processing and Analysis

Table 3 shows average production unit value by product category in three-month year to date 2016 compared to the same period of 2015. This table shows that average production unit value of “Electric power assist” greatly increases.

Table 3 Average Unit Value by product category:  
Three-Month Year to Date 2016 compared to Three-Month Year to Date 2015

Category	Average Unit Value(JPY) 3 month YTD 2016	Average Unit Value(JPY) 3 month YTD 2015	Variance (JPY)	Variance (%)
Light bicycles	27,823	26,543	1,280	4.8
Electric power assist	80,477	72,050	8,427	11.7
Miscellaneous	29,031	30,751	-1,720	-5.6
<b>Total</b>	<b>55,799</b>	<b>48,656</b>	<b>7,143</b>	<b>14.7</b>

Source : Ministry of Economy, Trade and Industry (METI) Current Production Statistics Survey (2015 figure is revised) Japan Bicycle Promotion Institute Processing and Analysis  
Due to round off, Total may not match.

Table 4 shows production units, total value and average unit value of “Electric power assist bicycles” by month. Unit and value both increase in every month in 2016 compared to the same month of the previous year.

Table 4  
Production of “Electric power assist bicycles” by month: 2016 compared to 2015

	2016			2015			Variance of unit production	Variance of production value(JPY million)	Variance of average unit value(JPY)
	Unit production	Production value(JPY million)	Average unit value(JPY)	Unit production	Production value(JPY million)	Average unit value(JPY)			
January	41,742	3,430	82,171	37,302	2,547	68,281	13,891	41,742	3,430
February	45,270	3,612	79,788	36,666	2,837	77,374	2,414	45,270	3,612
March	53,414	4,259	79,736	44,783	3,172	70,830	8,905	53,414	4,259
YTD	140,426	11,301	80,477	118,751	8,556	72,050	8,427	140,426	11,301

Source : Ministry of Economy, Trade and Industry (METI) Current Production Statistics Survey (2015 figure is revised) Japan Bicycle Promotion Institute Processing and Analysis  
Due to round off, Total may not match.

## 2 – 2 Comprehensive production, shipments and inventory status of the Japanese bicycle manufacturers

Table 5 shows comprehensive manufacturing and sales condition including production, receipts, shipments (sales and others) and month end inventory in three-month year to date 2016 compared to the same period of 2015.

Table 5 Production, shipments and inventory of the Japanese bicycle manufacturers:  
Three-Month Year to Date 2016 compared to Three-Month Year to Date 2015

Category	Production		Receipts (Units)	Shipments			March end Inventory (Units)
	Units	Value (JPY million)		Sales		Others (Units)	
				Units	Value (JPY million)		
3 month YTD 2016 Light bicycles	101,751	2,831	244,364	242,653	4,654	123,936	65,019
3 month YTD 2015 Light bicycles	102,324	2,716	261,018	247,211	4,710	139,532	69,392
Variance %	-0.6	4.2	-6.4	-1.8	-1.2	-11.2	-6.3
3 month YTD 2016 Electric power assist	140,426	11,301	102,623	146,241	10,908	102,356	22,731
3 month YTD 2015 Electric power assist	118,751	8,556	88,266	127,348	9,118	88,070	21,964
Variance %	18.3	32.1	16.3	14.8	19.6	16.2	3.5
3 month YTD 2016 Miscellaneous	23,148	672	116,033	89,797	2,112	29,478	49,195
3 month YTD 2015 Miscellaneous	28,780	885	100,775	87,740	1,986	31,096	44,186
Variance %	-19.6	-24.1	15.1	2.3	6.3	-5.2	11.3
3 month YTD 2016 Total	265,325	14,805	463,020	478,691	17,673	255,770	136,945
3 month YTD 2015 Total	249,855	12,157	450,059	462,299	15,813	258,698	135,542
Variance %	6.2	21.8	2.9	3.5	11.8	-1.1	1.0

Source : Ministry of Economy, Trade and Industry (METI) Current Production Statistics Survey  
(2015 figure is revised) Japan Bicycle Promotion Institute Processing and Analysis  
Due to round off, Total may not match.

Total receipts units in three-month year to date 2016 increase 2.9% compared to three-month year to date 2015. However, "Light bicycles" decrease by 6.4%.

Total units of shipments sales in three-month year to date 2016 increase 3.5% compared to that of three-month year to date 2015. "Electric power assist" greatly increases, but "Light bicycles" decreases.

Total value of shipments sales increases by 11.8% in three-month year to date 2016 compared to the same period of 2015. Here again, "Electric power assist" greatly increases, but "Light bicycles" decreases.

Total units of shipments others decrease 1.1% in three-month year to date 2016 compared to the same period of 2015. By category, "Light bicycles" and "Miscellaneous" decrease, on the other hand, "Electric power assist" increases. Shipments others are principally the commissioned products shipped to the consigners.

Total month end inventory in March 2016 is 136,945units, 1.0% increase compared to March 2015.

## 2 – 3 Eleven year history of three-month year to date bicycle production

Table 6 shows an eleven year history of three-month year to date Japanese bicycle production, shipments and inventory from 2006 to 2016.

Table 6 Eleven year history of bicycle production and shipments:  
Three-Month Year to Date March end inventory by Japanese bicycle manufactures

3 month YTD	Production			Shipments			March end Inventory (Units)
	Units	Value(JPY million)	Average Unit Value(JPY)	Units	Value(JPY million)	Average Unit Value(JPY)	
2016	265,325	14,805	55,799	478,691	17,673	36,919	136,945
2015	249,855	12,157	48,656	462,299	15,813	34,205	135,542
2014	278,336	13,390	48,107	580,585	17,708	30,500	128,442
2013	264,751	11,572	43,709	565,284	15,672	27,724	204,761
2012	308,426	12,688	41,138	812,892	18,481	22,735	213,991
2011	283,461	11,345	40,023	890,844	19,097	21,437	143,353
2010	299,871	10,345	34,498	857,346	17,167	20,023	197,543
2009	302,897	9,138	30,169	887,807	16,529	18,618	201,479
2008	324,543	7,698	23,720	1,016,304	15,574	15,324	215,025
2007	338,671	7,117	21,014	1,069,225	14,114	13,200	214,321
2006	435,978	8,134	18,657	1,188,506	14,653	12,329	238,679

Source : Ministry of Economy, Trade and Industry (METI) Current Production Statistics Survey  
(Before 2015 figure is revised)

Japan Bicycle Promotion Institute Processing and Analysis

Production units in three-month year to date 2016 are ninth in eleven years. However, production value in this period is the highest in this history. With these facts, the average production unit value is the highest in eleven years. Also, shipments units in three-month year to date 2016 are tenth in eleven years, and shipments value in three-month year to date 2016 is fourth. The average shipments unit value in three-month year to date 2016 is the highest. When compared average production unit value to average shipments unit value, average production unit value has been higher than average shipments unit value for eleven consecutive years. Month end inventory of March 2016 is 136,945 units, ninth in the last eleven years.

Chart C shows a graphic presentation of this eleven year history of Japanese bicycle unit production during the three-month year to date from 2006 to 2016 based on Table 6.

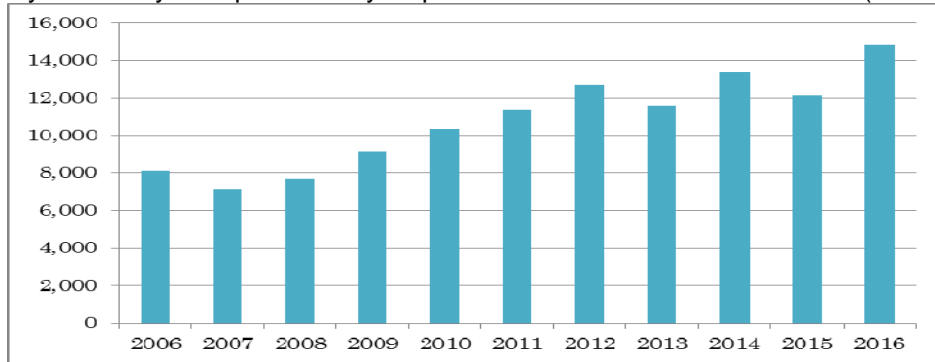
Chart C  
Eleven year history of Japanese bicycle unit production: Three-Month YTD (units)



Source : Ministry of Economy, Trade and Industry (METI) Current Production Statistics Survey,  
Japan Bicycle Promotion Institute Processing and Analysis

Chart D shows a graphic presentation of the eleven year history of Japanese bicycle production value during the three-month year to date from 2006 to 2016 also based on Table 6. It can be said that production value is on the upward trend.

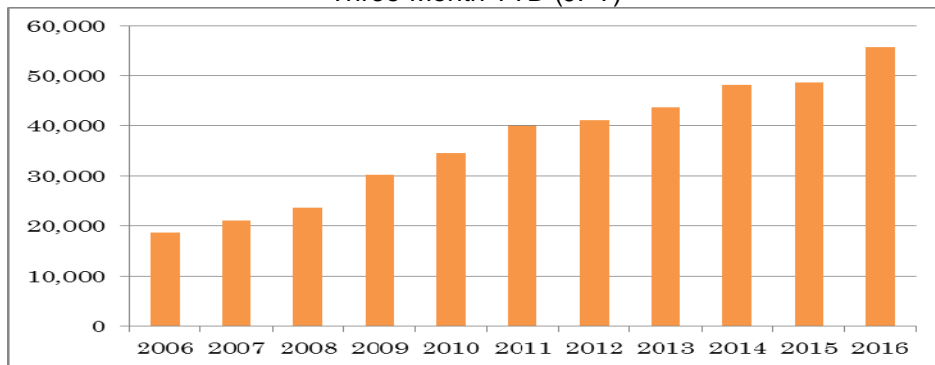
Chart D  
 Eleven year history of Japanese bicycle production value: Three-Month YTD (JPY million)



Source : Ministry of Economy, Trade and Industry (METI) Current Production Statistics Survey, Japan Bicycle Promotion Institute Processing and Analysis

Chart E shows a graphic presentation of the eleven year history of Japanese bicycle production average unit value during the three-month year to date from 2006 to 2016 also based on Table 6.

Chart E  
 Eleven year history of Japanese bicycle production average unit value:  
 Three-Month YTD (JPY)



Source : Ministry of Economy, Trade and Industry (METI) Current Production Statistics Survey, Japan Bicycle Promotion Institute Processing and Analysis

Table 7 shows the eleven year history of the total unit production by month.

Table 7 Eleven year history of total production units by month (units)

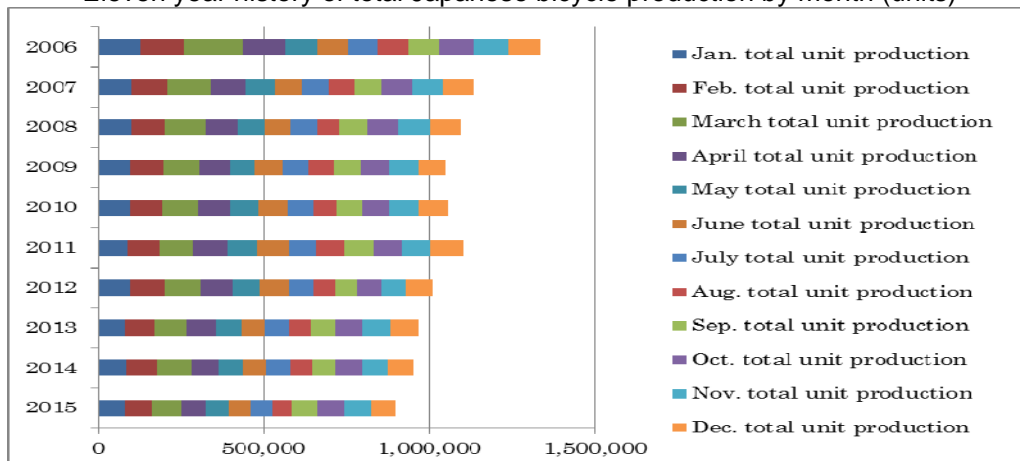
	Jan. total unit production	Feb. total unit production	March total unit production	April total unit production	May total unit production	June total unit production
2016	82,586	88,069	94,670			
2015	78,891	81,242	89,722	75,857	66,218	68,133
2014	84,512	93,408	100,416	83,216	72,121	74,255
2013	79,022	92,667	93,062	88,877	75,906	71,711
2012	96,874	105,350	106,202	95,001	85,528	83,915
2011	86,445	98,081	98,935	107,181	90,542	92,009
2010	93,923	99,424	106,524	98,097	87,516	86,269
2009	96,944	99,314	106,639	94,506	76,287	80,900
2008	97,728	104,912	121,903	96,456	82,921	78,520
2007	99,537	108,413	130,721	108,017	86,039	81,714
2006	124,909	133,470	177,599	128,017	97,944	93,522

年	July total unit production	Aug. total unit production	Sep. total unit production	Oct. total unit production	Nov. total unit production	Dec. total unit production	Total unit production
2016							265,325
2015	64,647	62,481	74,354	82,311	79,144	75,095	898,095
2014	74,981	62,167	68,705	81,603	78,727	77,437	951,548
2013	72,325	66,889	74,392	82,781	84,937	83,385	965,954
2012	74,820	65,045	68,721	73,476	73,695	83,687	1,012,314
2011	83,200	86,553	88,460	86,528	87,020	96,712	1,101,666
2010	75,897	72,056	77,555	82,694	86,498	90,498	1,056,951
2009	80,068	76,206	81,360	88,312	85,103	83,830	1,049,469
2008	76,552	70,488	80,661	95,816	98,763	90,212	1,094,932
2007	79,147	79,509	81,679	91,745	93,341	95,744	1,135,606
2006	87,738	94,248	94,359	105,347	99,636	97,723	1,334,512

Source : Ministry of Economy, Trade and Industry (METI) Current Production Statistics Survey, Japan Bicycle Promotion Institute Processing and Analysis (Before 2015 figure is revised)

Chart F shows a graphic presentation of the eleven year history of total production units by month based on Table 7. This chart shows that the bicycle production is carried out relatively equally every month.

Chart F  
Eleven year history of total Japanese bicycle production by month (units)



Source : Ministry of Economy, Trade and Industry (METI) Current Production Statistics Survey, Japan Bicycle Promotion Institute Processing and Analysis

Table 8 shows an eleven year history of three-month year to date Japanese bicycle unit production by category.

Table 8 Eleven-year history of Three-Month Year to Date Japanese bicycle unit production by categories (unit)

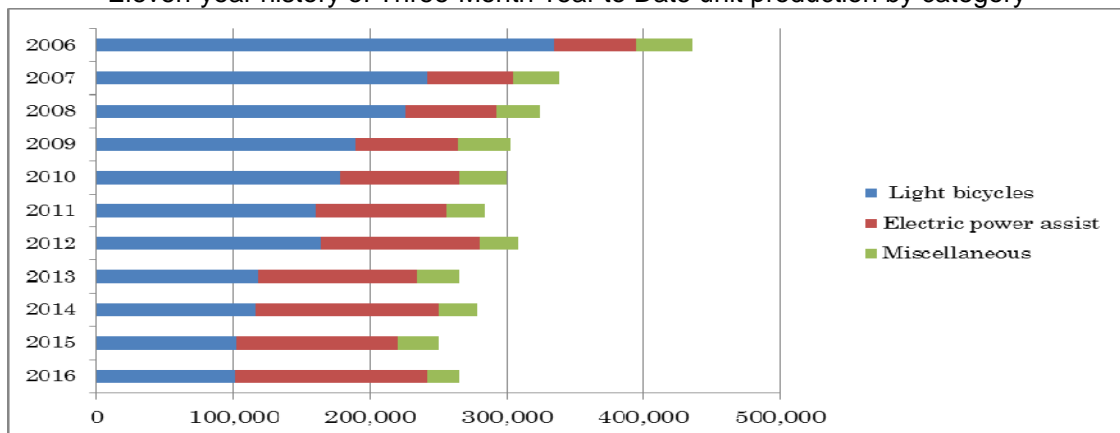
	Light bicycles	Electric power assist	Miscellaneous	Total
2016	101,751	140,426	23,148	265,325
2015	102,324	118,751	28,780	249,855
2014	116,929	132,842	28,565	278,336
2013	118,317	116,175	30,259	264,751
2012	163,515	116,341	28,570	308,426
2011	160,600	95,370	27,491	283,461
2010	178,147	87,177	34,547	299,871
2009	189,774	74,861	38,262	302,897
2008	226,210	66,077	32,256	324,543
2007	242,133	62,966	33,572	338,671
2006	335,501	59,170	41,307	435,978

From 2011, "Children & Infant bicycles", "Mini-cycles", "Mountain bikes" and "Special bicycles" have been combined into "Miscellaneous". "Miscellaneous" between 2006 and 2010 include these four categories.

Source : Ministry of Economy, Trade and Industry (METI) Current Production Statistics Survey, Japan Bicycle Promotion Institute Processing and Analysis

Chart G shows a graphic presentation of the eleven year history of three-month year to date unit production by category based on Table 8. This chart shows that "Light bicycles" are decreasing, and "Electric power assist" is increasing.

Chart G Eleven-year history of Three-Month Year to Date unit production by category



Source : Ministry of Economy, Trade and Industry (METI) Current Production Statistics Survey, Japan Bicycle Promotion Institute Processing and Analysis

### **3. Japanese bicycle import**

Bicycle import by category is mentioned below. To begin with, import categories and HS numbers in Japan are classified as follows. "Electric power assist bicycles" is not classified as a single category and is included in the category of "Other motorcycles" in Trade Statistics. Please note that "Other motorcycles" includes all motorcycles which are not classified in the upper layer and all electric motorcycles.



Table 9 Import categories and HS numbers

HS number and product category	Bicycle type
8712.00100 Mountain bikes	<ul style="list-style-type: none"> <li>• MTB(includes V brake or disk brake equipped)</li> <li>• Cross bikes</li> </ul>
8712.00211 Mini-cycles	<ul style="list-style-type: none"> <li>• Mini-cycles</li> <li>• Small wheel foldable bicycles</li> <li>• BMX</li> </ul>
8712.00218 Infant bicycles	<ul style="list-style-type: none"> <li>• Infant bicycles(12 – 16 inch)</li> <li>• Toy bicycles(12 inch two wheel)</li> <li>• Unicycles(12 – 16 inch)</li> </ul>
8712.00219 Children bicycles	<ul style="list-style-type: none"> <li>• Children bicycles(18 – 24 inch)</li> <li>• Junior MTB(18 – 24 inch)</li> <li>• Unicycles(18 – 24 inch)</li> </ul>
8712.00291 Light bicycles	<ul style="list-style-type: none"> <li>• Light bicycles(excludes outer derailleur equipped)</li> <li>• Single speed, sports use bicycles equipped with inner derailleur.</li> </ul>
8712.00299 Miscellaneous	<ul style="list-style-type: none"> <li>• Sports use bicycles</li> <li>• Light bicycles equipped with outer derailleur</li> <li>• Junior MTB(26 inch)</li> </ul>
8711.90000 Other Motorcycles	<ul style="list-style-type: none"> <li>• Other Motorcycles (including mopeds) and cycles fitted with an auxiliary motor, with or without side-cars; side-cars. Electric power assist bicycles are included.</li> </ul>

Source : Japan Bicycle Promotion Institute

### 3 – 1 Outline of three-month year to date 2016 bicycle import

Table 10 shows Japanese bicycle import of all product categories excluding “Other Motorcycles” in three-month year to date 2016 compared to the same period of 2015. Total units is 2,299,150, increase by 1.0% compared to the same period of 2015. Total CIF value is JPY27,404,625 thousands, decreases by 8.7% compared to the same period of 2015, resulted in average CIF unit value of JPY11,919, 9.6% decrease.

The currency exchange rate is investigated. The average dollar-yen exchange rate during three-month year to date 2015 was US\$1=JPY119.14; however, it gets US\$1=JPY116.68 in three-month year to date 2016(Refer chief custom inspector published rate). JPY gets stronger. This change might be one of the reasons of ceasing trend of recent increase of Total CIF Value and Average CIF unit value and they turn to decrease.

Table 10 Japanese bicycle import:  
Three-Month Year to Date 2016 compared to Three-Month Year to Date 2015

	Total units	Total CIF Value (JPY thousand)	Average CIF unit value(JPY)
3 month YTD 2016	2,299,150	27,404,625	11,919
3 month YTD 2015	2,277,256	30,021,500	13,183
Variance	21,894	-2,616,875	-1,264
Variance %	1.0	-8.7	-9.6

Source : Ministry of Finance Japan (MOF) Trade Statistics of Japan,  
Japan Bicycle Promotion Institute Processing and Analysis

Table 10 Annex shows Three-Month Year to Date 2016 import of “Other Motorcycles” compared to the same period of 2015 for reference.

Table 10 Annex (Reference) Japanese import of “Other Motorcycles”:  
Three-Month Year to Date 2016 compared to Three-Month Year to Date 2015

	Total units	Total CIF Value (JPY thousand)	Average CIF unit value(JPY)
3 month YTD 2016	16,037	521,112	32,494
3 month YTD 2015	11,581	461,264	39,829
Variance	4,456	59,848	-7,335
Variance %	38.5	13.0	-18.4

Source : Ministry of Finance Japan (MOF) Trade Statistics of Japan,  
Japan Bicycle Promotion Institute Processing and Analysis

### 3 – 2 Three-month year to date 2016 bicycle import by category

Table 11 shows three-month year to date 2016 Japanese bicycle import by category.

Table 11  
Japanese bicycle import in Three-Month Year to Date 2016 by category

HS number and category	Total units	Total CIF Value (JPY thousand)	Average CIF unit value(JPY)
8712.00100 Mountain bikes	46,036	1,056,224	22,943
8712.00211 Mini-cycles	53,357	737,989	13,831
8712.00218 Infant bicycles	152,269	1,107,176	7,271
8712.00219 Children bicycles	479,142	4,610,434	9,622
8712.00291 Light bicycles	799,569	8,270,990	10,344
8712.00299 Miscellaneous	768,777	11,621,812	15,117
Total	2,299,150	27,404,625	11,919

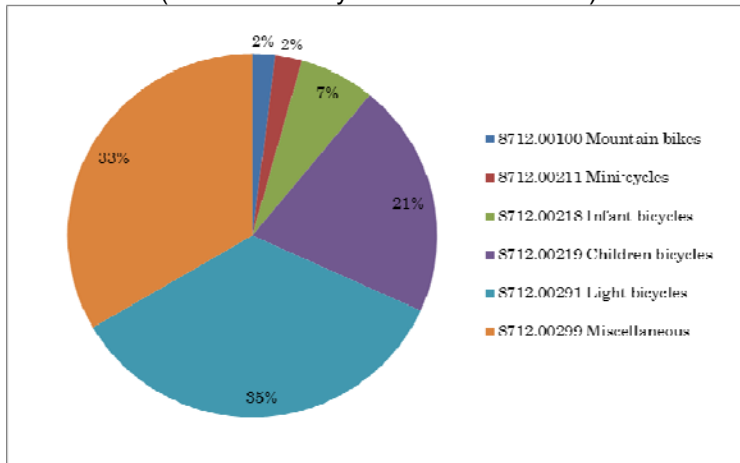
8711.90000 Other Motorcycles	16,037	521,112	32,494
------------------------------	--------	---------	--------

Source : Ministry of Finance Japan (MOF) Trade Statistics of Japan,  
Japan Bicycle Promotion Institute Processing and Analysis

The average CIF unit value of 8712.00100 “Mountain bikes” is JPY 22,943, highest among the categories except for “Other Motorcycles”. The unit volume of HS8712.00291 “Light bicycles” is the biggest, and its average CIF unit value is JPY 10,344. The total CIF value of HS8712.00299 “Miscellaneous” which includes sports use bicycles and light bicycles equipped with outer derailleur is the highest among the categories, and the total units are getting closer to “Light bicycles”. Its average CIF unit value is JPY 15,117.

Chart H shows a graphic presentation of three-month year to date 2016 Japanese bicycle import unit share by category based on Table 11. “Light bicycles” captures 35% share and “Miscellaneous” captures 33% share.

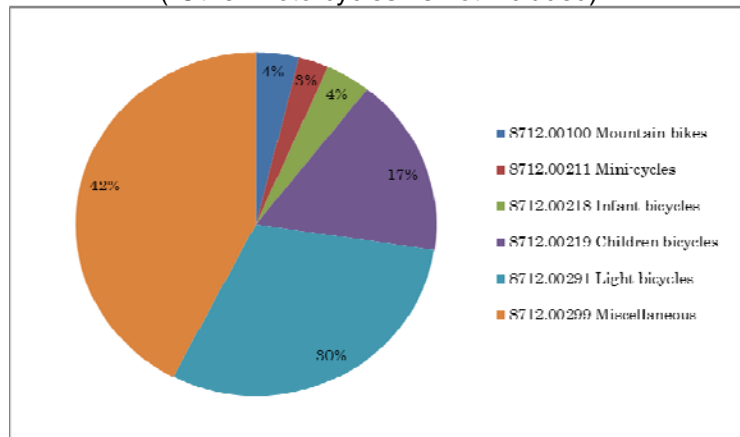
Chart H  
 Three-Month YTD2016 Japanese bicycle import: Unit share by category  
 ("Other Motorcycles" is not included)



Source : Ministry of Finance Japan (MOF) Trade Statistics of Japan, Japan Bicycle Promotion Institute Processing and Analysis

Chart I shows a graphic presentation of three-month year to date 2016 Japanese bicycle import value share by category also based on Table 11. "Miscellaneous" captures 42% and "Light bicycles" captures 30% both big share.

Chart I  
 Three-Month YTD2016 Japanese bicycle import: Value share by category  
 ("Other Motorcycles" is not included)



Source : Ministry of Finance Japan (MOF) Trade Statistics of Japan, Japan Bicycle Promotion Institute Processing and Analysis

Table 12 shows a three-month year to date 2016 Japanese bicycle import by category compared to the same period of the previous year.

Table 12 Three-Month Year to Date 2016 Japanese bicycle import by category compared to Three-Month Year to Date 2015

3 month YTD	2016		2015		Variance %	
	units	Total CIF value (JPY thousand)	units	Total CIF value (JPY thousand)	Units	CIF value
8712.00100 Mountain bikes	46,036	1,056,224	57,459	1,483,996	-19.9%	-28.8%
8712.00211 Mini-cycles	53,357	737,989	36,331	416,882	46.9%	77.0%
8712.00218 Infant bicycles	152,269	1,107,176	115,495	943,835	31.8%	17.3%
8712.00219 Children bicycles	479,142	4,610,434	441,698	4,751,532	8.5%	-3.0%
8712.00291 Light bicycles	799,569	8,270,990	857,838	9,875,007	-6.8%	-16.2%
8712.00299 Miscellaneous	768,777	11,621,812	768,435	12,550,248	0.0%	-7.4%
Total	2,299,150	27,404,625	2,277,256	30,021,500	1.0%	-8.7%
Average unit price (JPY)		11,919		13,183		-9.6%

8711.90000 Other Motorcycles	16,037	521,112	11,581	461,264	38.5%	13.0%
Average unit price (JPY)		32,494		39,829		-18.4%

Source : Ministry of Finance Japan (MOF) Trade Statistics of Japan,  
Japan Bicycle Promotion Institute Processing and Analysis

Except for “Mountain bikes” and “Light bicycles”, all categories increase in units. Import value of “Mini-cycles” and “Infant bicycles” increase; however, all other categories show decrease in import value.

### 3 – 3 Fifteen year history of three-month year to date bicycle import

Table 13 shows a fifteen year history of three-month year to date Japanese bicycle import.

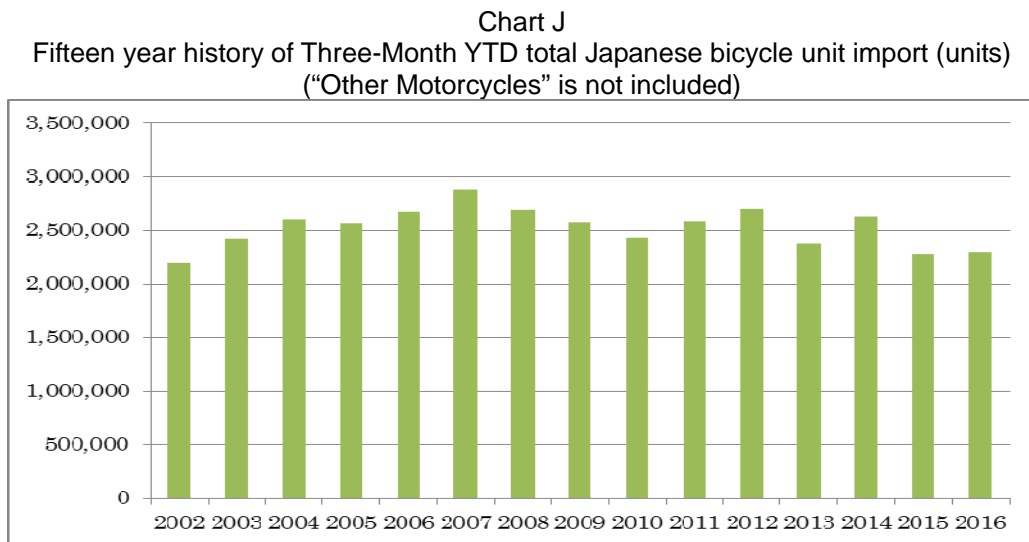
Table 13 Fifteen-year history of Three-Month Year to Date Japanese bicycle import:  
All categories (“Other Motorcycles” is not included)

3 month YTD	Total import units	Total CIF value (JPY thousand)	Average CIF unit value(JPY)
2016	2,299,150	27,404,625	11,919
2015	2,277,256	30,021,500	13,183
2014	2,626,492	28,479,177	10,843
2013	2,373,370	23,483,404	9,895
2012	2,695,555	22,695,025	8,419
2011	2,580,156	20,269,931	7,856
2010	2,428,569	19,462,552	8,014
2009	2,576,224	22,705,053	8,813
2008	2,684,045	22,666,563	8,445
2007	2,877,065	23,273,025	8,089
2006	2,670,732	19,943,370	7,467
2005	2,563,991	16,336,547	6,372
2004	2,603,967	15,845,606	6,085
2003	2,414,612	16,396,236	6,790
2002	2,196,940	16,621,325	7,566

Source : Ministry of Finance Japan (MOF) Trade Statistics of Japan,  
Japan Bicycle Promotion Institute Processing and Analysis

Total unit import in three-month year to date 2016 is the third lowest in the last fifteen years. On the other hand, total CIF value in three-month year to date 2016 is the third highest in this history; make the average CIF unit value JPY 11,919, the second highest in this period.

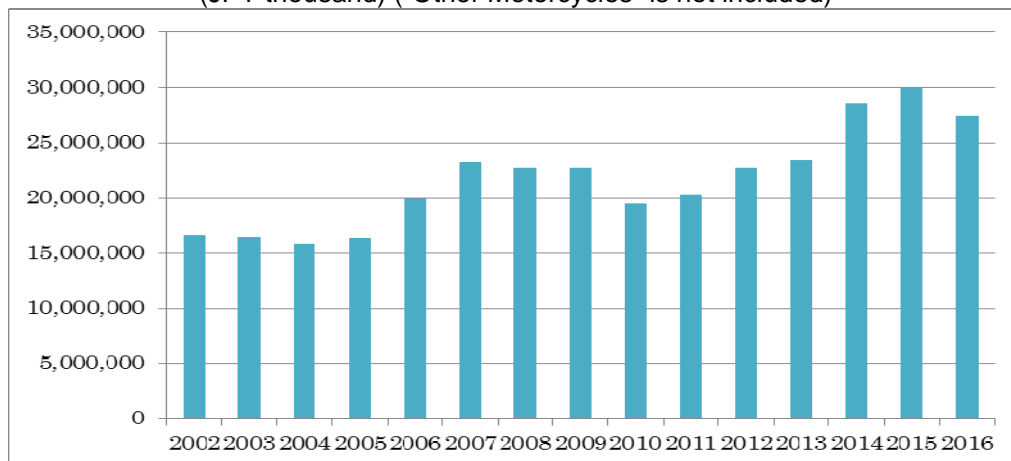
Chart J shows the fifteen year history of three-month year to date total import units based on Table 13.



Source : Ministry of Finance Japan (MOF) Trade Statistics of Japan,  
Japan Bicycle Promotion Institute Processing and Analysis

Chart K shows the fifteen year history of three-month year to date total import CIF value also based on Table 13.

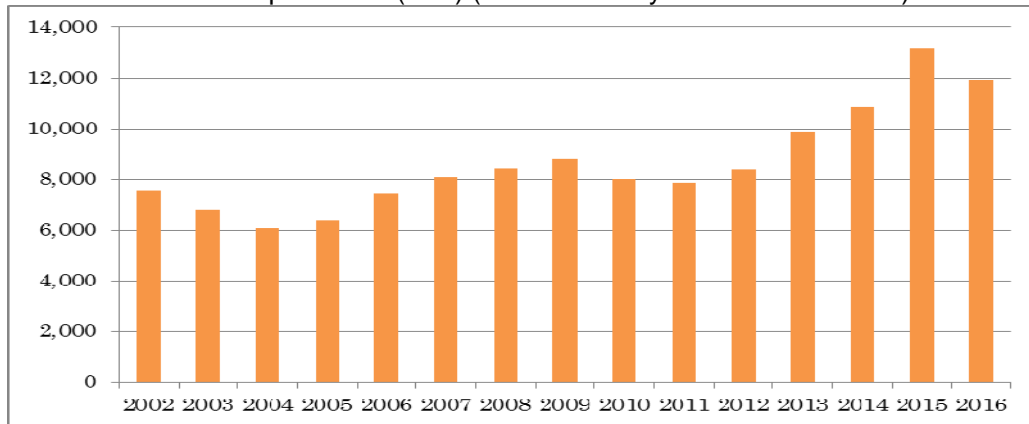
**Chart K** Fifteen year history of Three-Month YTD total Japanese bicycle import CIF value  
(JPY thousand) ("Other Motorcycles" is not included)



Source : Ministry of Finance Japan (MOF) Trade Statistics of Japan,  
Japan Bicycle Promotion Institute Processing and Analysis

Chart L shows the fifteen year history of three-month year to date average CIF unit import value also based on Table 13.

Chart L Fifteen year history of Three-Month YTD Japanese bicycle average CIF unit import value (JPY) (“Other Motorcycles” is not included)



Source : Ministry of Finance Japan (MOF) Trade Statistics of Japan, Japan Bicycle Promotion Institute Processing and Analysis

Table 14 shows the total unit import by month. In 2016, January import was low level, but in February and March it gets increased compared to the same month of the previous year.

Table 14 Fifteen year history of total import units by month: (“Other Motorcycles” is not included)

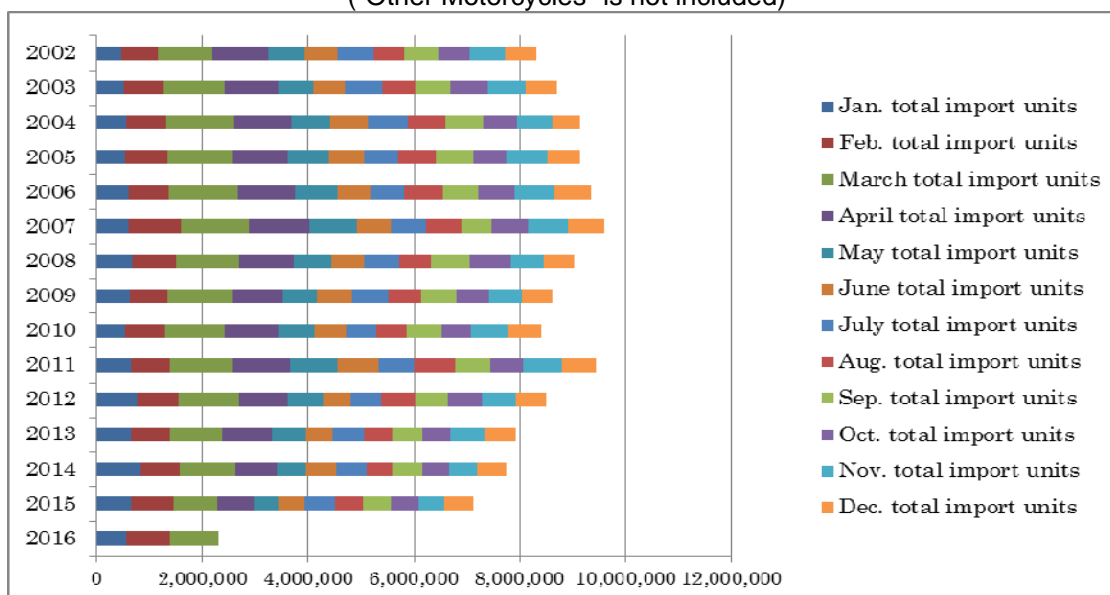
Year	January total import units	February total import units	March total import units	April total import units	May total import units	June total import units
2016	559,379	823,009	916,762			
2015	639,107	809,453	828,696	690,064	462,606	510,639
2014	800,012	758,904	1,067,576	783,049	546,090	581,432
2013	646,439	729,345	997,586	949,665	634,542	514,285
2012	759,838	779,645	1,156,072	904,565	672,252	525,908
2011	661,234	725,936	1,192,986	1,067,890	915,243	768,659
2010	529,116	759,113	1,140,340	1,002,806	691,515	600,223
2009	631,533	717,828	1,226,863	932,220	660,802	652,693
2008	679,048	809,921	1,195,076	1,041,042	718,439	623,626
2007	613,892	988,006	1,275,167	1,152,734	890,124	644,144
2006	602,545	765,063	1,303,124	1,075,231	796,610	633,795
2005	541,343	796,348	1,226,300	1,056,187	777,336	669,039
2004	556,120	767,570	1,280,277	1,081,557	727,411	723,301
2003	504,267	764,381	1,145,964	1,015,772	655,917	610,329
2002	462,594	682,561	1,051,785	1,037,903	705,257	618,883

year	July total import units	Aug. total import units	Sep. total import units	Oct. total import units	Nov. total import units	Dec. total import units	YTD total import units
2016							2,299,150
2015	556,279	542,763	524,133	519,919	484,170	554,615	7,122,444
2014	572,129	504,218	543,409	502,832	540,165	534,548	7,734,364
2013	595,336	535,046	561,806	528,767	640,332	599,246	7,932,395
2012	586,024	629,284	631,719	642,217	649,625	562,295	8,499,444
2011	675,783	776,045	655,654	629,958	722,052	659,152	9,450,592
2010	562,581	582,646	663,734	546,459	719,973	603,440	8,401,946
2009	685,910	619,872	677,716	623,646	620,796	571,838	8,621,717
2008	646,395	612,531	729,659	770,349	625,626	582,061	9,033,773
2007	672,070	649,954	586,098	688,807	741,855	700,463	9,603,314
2006	643,767	724,797	673,445	684,487	767,415	668,893	9,339,172
2005	626,723	720,123	708,659	631,378	780,371	610,012	9,143,819
2004	755,089	715,190	699,179	653,057	648,234	531,426	9,138,411
2003	694,160	623,008	684,831	710,079	691,745	602,173	8,702,626
2002	678,438	585,452	634,374	597,460	671,907	599,479	8,326,093

Source : Ministry of Finance Japan (MOF) Trade Statistics of Japan,  
Japan Bicycle Promotion Institute Processing and Analysis

Chart M shows a graphic presentation of fifteen year history of total import units by month based on Table 14.

Chart M Fifteen year history of total Japanese bicycle import by month (units)  
("Other Motorcycles" is not included)



Source : Ministry of Finance Japan (MOF) Trade Statistics of Japan,  
Japan Bicycle Promotion Institute Processing and Analysis

Table 15 shows a fifteen year history of three-month year to date Japanese bicycle unit import by category.

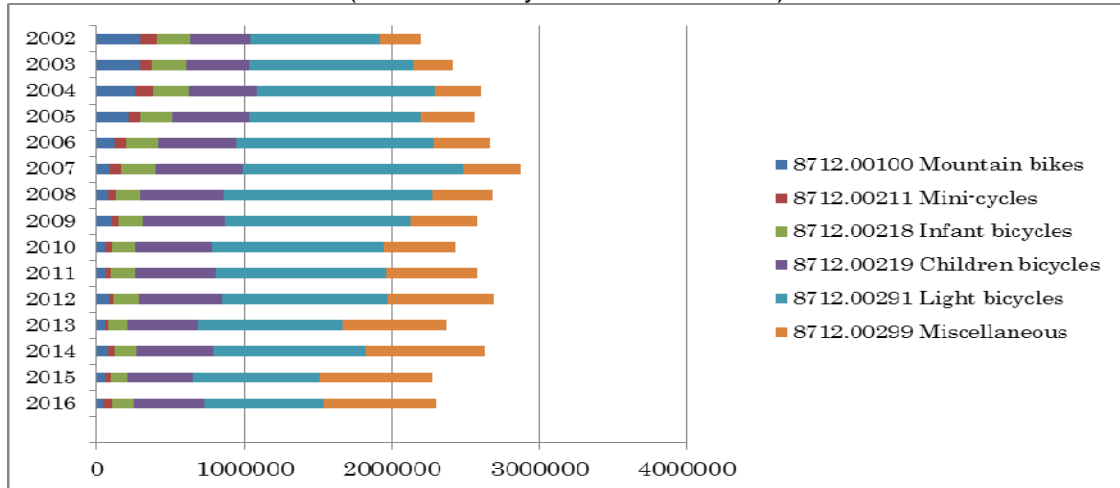
Table 15  
Fifteen-year history of Three-Month Year to Date Japanese bicycle unit import  
by categories (“Other Motorcycles” is not included)

	8712.00100 Mountain bikes	8712.00211 Mini-cycles	8712.00218 Infant bicycles	8712.00219 Children bicycles	8712.00291 Light bicycles	8712.00299 Miscellaneous	Total
2016	46,036	53,357	152,269	479,142	799,569	768,777	2,299,150
2015	57,459	36,331	115,495	441,698	857,838	768,435	2,277,256
2014	73,179	40,807	152,613	522,810	1,029,951	807,132	2,626,492
2013	57,955	18,262	131,559	474,305	982,149	709,140	2,373,370
2012	87,062	24,657	171,652	565,515	1,119,749	726,920	2,695,555
2011	63,603	33,548	164,291	551,849	1,150,866	615,999	2,580,156
2010	59,489	38,452	156,636	530,318	1,160,841	482,833	2,428,569
2009	97,986	50,097	165,108	551,110	1,258,515	453,408	2,576,224
2008	78,379	47,352	167,448	563,993	1,416,437	410,436	2,684,045
2007	88,125	75,520	231,083	591,808	1,503,365	387,164	2,877,065
2006	121,249	75,377	215,316	537,198	1,334,396	387,146	2,670,682
2005	219,677	72,011	219,366	518,450	1,166,989	367,498	2,563,991
2004	257,211	120,358	247,804	464,691	1,202,050	311,853	2,603,967
2003	288,655	86,808	235,896	419,564	1,113,661	270,028	2,414,612
2002	301,408	100,435	235,384	405,757	876,882	277,074	2,196,940

Source : Ministry of Finance Japan (MOF) Trade Statistics of Japan,  
Japan Bicycle Promotion Institute Processing and Analysis

Chart N shows these import history.

Chart N  
Fifteen year history of Three-Month YTD Japanese bicycle unit import by category (units)  
 (“Other Motorcycles” is not included)



Source : Ministry of Finance Japan (MOF) Trade Statistics of Japan,  
Japan Bicycle Promotion Institute Processing and Analysis

Table 16 shows a fifteen year history of three-month year to date Japanese “Other Motorcycle” import for reference.



Table 16 (Reference)  
Fifteen year history of Three-Month YTD Japanese “Other Motorcycle” import

3 month YTD	Total import units	Total CIF value (JPY thousand)	Average CIF unit value(JPY)
2016	16,037	521,112	32,494
2015	11,581	461,264	39,829
2014	15,612	616,140	39,466
2013	17,521	569,147	32,484
2012	8,647	265,723	30,730
2011	17,960	447,823	24,934
2010	22,485	551,192	24,514
2009	18,255	428,308	23,463
2008	15,102	352,605	23,348
2007	14,080	482,264	34,252
2006	17,245	336,069	19,488
2005	23,683	410,785	17,345
2004	33,646	438,920	13,045
2003	57,169	519,573	9,088
2002	17,029	252,662	14,837

Source : Ministry of Finance Japan (MOF) Trade Statistics of Japan,  
Japan Bicycle Promotion Institute Processing and Analysis

### 3 – 4 Main source country/area of Japanese bicycle import

Table 17 shows source countries and areas of three-month year to date 2016 Japanese bicycle import.

Table 17 Main source countries and areas of Japanese bicycle import in Three-Month Year to Date 2016 (“Other Motorcycles” is not included)

Source country/area	Total units	% share of total units	Total CIF Value (JPY thousand)	% share of total value	Average CIF unit value(JPY)
China	2,230,076	97.0	23,518,602	85.8	10,546
Taiwan	63,403	2.8	3,418,738	12.5	53,921
Others	5,671	0.2	467,285	1.7	82,399
Total	2,299,150	100.0	27,404,625	100.0	11,919

Source : Ministry of Finance Japan (MOF) Trade Statistics of Japan,  
Japan Bicycle Promotion Institute Processing and Analysis Due to round off, Total may not match.

“China” continues to be the biggest source country. It captures 97.0% of total units, and 85.8% of total CIF value. China proportion gets higher. The average CIF unit value is JPY 10,546. “Taiwan” follows “China”, capturing 2.8% of total units, and 12.5% of total CIF value. Taiwan proportion gets lower a little. The average CIF unit value is JPY 53,921. These two combined capture 99.8% of total units and 98.3% of total CIF value.

Table 18 shows Japanese bicycle import from “China” by category.

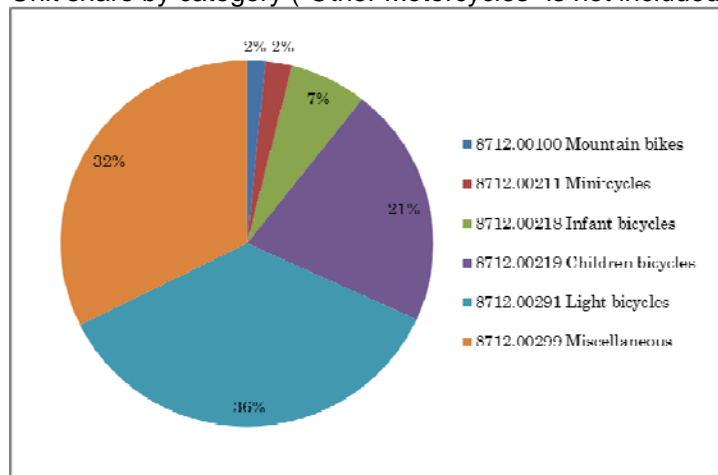
Table 18 Japanese bicycle import from “China” in Three-Month Year to Date 2016 by category (“Other Motorcycles” is not included)

HS number and category	Total units	Total CIF Value (JPY thousand)	Average CIF unit value(JPY)
8712.00100 Mountain bikes	35,373	609,870	17,241
8712.00211 Mini-cycles	51,612	647,282	12,541
8712.00218 Infant bicycles	149,205	1,058,472	7,094
8712.00219 Children bicycles	473,368	4,453,575	9,408
8712.00291 Light bicycles	799,199	8,251,040	10,324
8712.00299 Miscellaneous	721,319	8,498,363	11,782
Total	2,230,076	23,518,602	10,546

Source : Ministry of Finance Japan (MOF) Trade Statistics of Japan, Japan Bicycle Promotion Institute Processing and Analysis

Chart O shows a graphic presentation of three-month year to date 2016 Japanese bicycle import unit share from “China” by category based on Table 18. “Light bicycles” captures 36 % share, then “Miscellaneous” follows capturing 32% share. Unit import volume from “China” is so huge; therefore, this chart looks similar to Chart H which shows Japanese total unit import share by category.

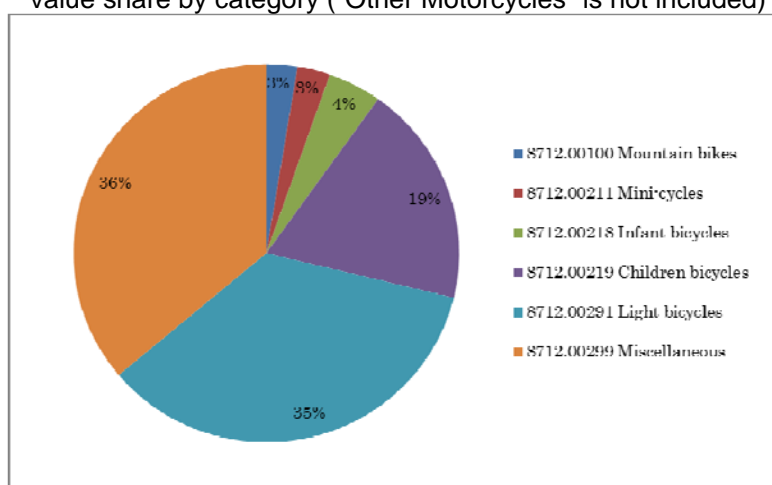
Chart O Three-Month YTD2016 Japanese bicycle import from “China”: Unit share by category (“Other Motorcycles” is not included)



Source : Ministry of Finance Japan (MOF) Trade Statistics of Japan, Japan Bicycle Promotion Institute Processing and Analysis

Chart P shows a graphic presentation of three-month year to date 2016 Japanese bicycle import value share from “China” by category also based on Table 18. “Miscellaneous” captures 36 % share and “Light bicycles” follows capturing 35% share.

Chart P Three-Month YTD2016 Japanese bicycle import from “China”:  
Value share by category (“Other Motorcycles” is not included)



Source : Ministry of Finance Japan (MOF) Trade Statistics of Japan,  
Japan Bicycle Promotion Institute Processing and Analysis

Then, Table 19 follows to show Japanese bicycle import from “Taiwan” by category.

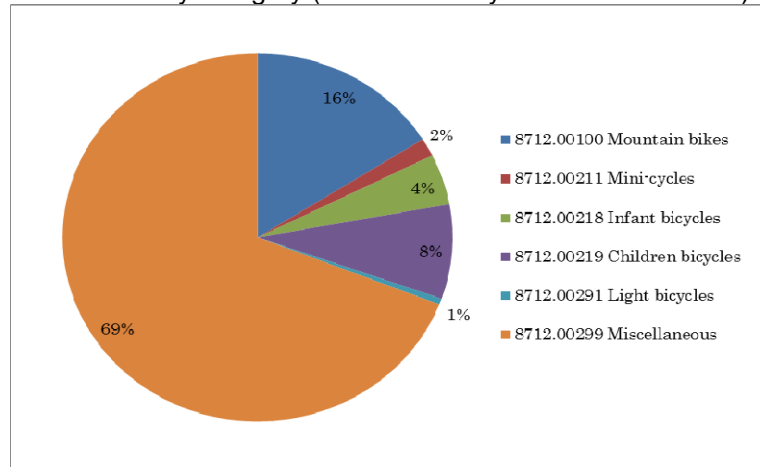
Table 19 Japanese bicycle import from “Taiwan” in Three-Month Year to Date 2016  
by category (“Other Motorcycles” is not included)

HS number and category	Total units	Total CIF Value (JPY thousand)	Average CIF unit value(JPY)
8712.00100 Mountain bikes	10,182	422,447	41,490
8712.00211 Mini-cycles	1,012	31,986	31,607
8712.00218 Infant bicycles	2,815	25,364	9,010
8712.00219 Children bicycles	5,269	107,729	20,446
8712.00291 Light bicycles	330	15,277	46,294
8712.00299 Miscellaneous	43,795	2,815,935	64,298
Total	63,403	3,418,738	53,921

Source : Ministry of Finance Japan (MOF) Trade Statistics of Japan,  
Japan Bicycle Promotion Institute Processing and Analysis

Chart Q shows a graphic presentation of three-month year to date 2016 Japanese bicycle import unit share from “Taiwan” by category based on Table 19. This chart looks totally different from Chart H which shows total import or Chart O which shows import from “China”. “Miscellaneous” captures 69% and “Mountain Bikes” captures 16% both big share. On the other hand, “Light bicycles” only captures 1% share.

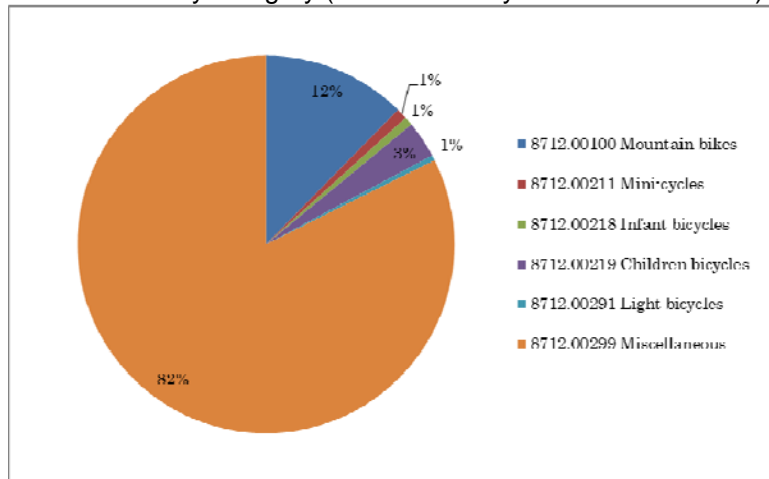
Chart Q Three-Month YTD2016 Japanese bicycle import from “Taiwan”:  
Unit share by category (“Other Motorcycles” is not included)



Source : Ministry of Finance Japan (MOF) Trade Statistics of Japan,  
Japan Bicycle Promotion Institute Processing and Analysis

Moreover, Chart R shows a graphic presentation of three-month year to date 2016 Japanese bicycle import value share from “Taiwan” by category also based on Table 19. The characteristics appear more remarkably than the unit import share. “Miscellaneous” captures big 82% share and “Mountain Bikes” follows capturing 12% share. “Light bicycles” only captures 1% share.

Chart R Three-Month YTD2016 Japanese bicycle import from “Taiwan”:  
Value share by category (“Other Motorcycles” is not included)



Source : Ministry of Finance Japan (MOF) Trade Statistics of Japan,  
Japan Bicycle Promotion Institute Processing and Analysis

Then, Table 20 shows source countries and areas of three-month year to date 2016 Japanese “Other Motorcycles” import for reference.

Table 20 (Reference) Main source countries and areas of Japanese  
“Other Motorcycles” import in Three-Month Year to Date 2016 compared to 2015

Source country/area	Total units	% share of total units	Total CIF Value (JPY thousand)	% share of total value	Average CIF unit value(JPY)
3 month YTD 2016 China	15,598	97.3	412,665	79.2	26,456
3 month YTD 2015 China	11,490	99.2	425,968	92.3	37,073
Variance %	4,108	-2.0	-13,303	-13.2	-10,617
3 month YTD 2016 Taiwan	354	2.2	65,085	12.5	183,856
3 month YTD 2015 Taiwan	39	0.3	7,843	1.7	201,103
Variance %	315	1.9	57,242	10.8	-17,247
3 month YTD 2016 Others	85	0.5	43,362	8.3	510,141
3 month YTD 2015 Others	52	0.4	27,453	6.0	527,942
Variance %	33	0.1	15,909	2.4	-17,801
3 month YTD 2016 Total	16,037	100.0	521,112	100.0	32,494
3month YTD 2015 Total	11,581	100.0	461,264	100.0	39,829
Variance %	4,456	0.0	59,848	0.0	-7,335

Source : Ministry of Finance Japan (MOF) Trade Statistics of Japan,  
Japan Bicycle Promotion Institute Processing and Analysis Due to round off, Total may not match.

#### **4. Domestic unit volume**

Almost all of the Japanese bicycle export is used bicycle export to developing countries. Therefore, production units plus import units can be defined as domestic unit volume. Table 21 shows an eleven year history of three-month year to date domestic unit volume. In this period, unit production and unit import can be compared. Three-Month Year to Date 2016 domestic production ratio is 10.3%.

Table 21 Eleven-year history of Three-Month Year to Date  
Japanese bicycle domestic unit volume  
("Electric power assist bicycles" is included in unit production;  
"Other Motorcycles" is not included in unit import)

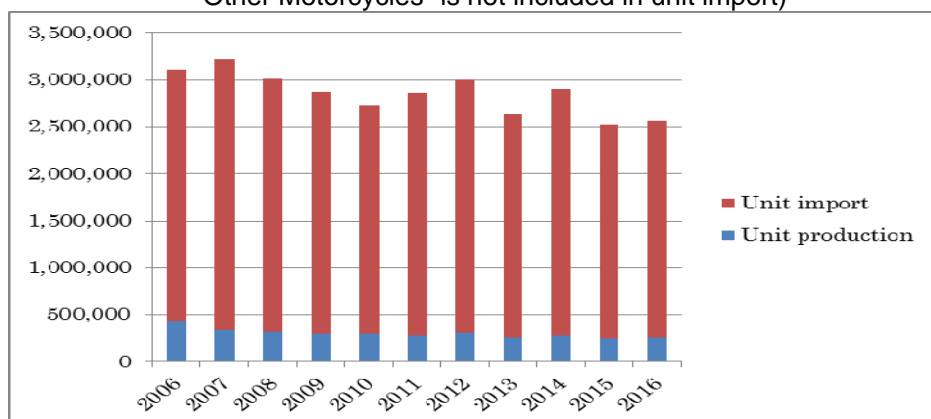
3 month YTD	Unit production	Unit import	Domestic unit volume	Domestic production ratio %
2016	265,325	2,299,150	2,564,475	10.3
2015	249,855	2,277,256	2,527,111	9.9
2014	278,336	2,626,492	2,904,828	9.6
2013	260,757	2,373,370	2,634,127	9.9
2012	308,426	2,695,555	3,003,981	10.3
2011	283,461	2,580,156	2,863,617	9.9
2010	299,871	2,428,569	2,728,440	11.0
2009	302,897	2,576,224	2,879,121	10.5
2008	324,543	2,684,045	3,008,588	10.8
2007	338,671	2,877,065	3,215,736	10.5
2006	435,978	2,670,682	3,106,660	14.0

Source : Ministry of Economy, Trade and Industry (METI) Current Production Statistics Survey  
(Before 2015 figure is revised)

Ministry of Finance Japan (MOF) Trade Statistics of Japan,  
Japan Bicycle Promotion Institute Processing and Analysis

Chart S is the graphic presentation of this history.

Chart S Eleven year history of Three-Month YTD domestic bicycle unit volume (units)  
 (“Electric power assist bicycles” is included in unit production;  
 “Other Motorcycles” is not included in unit import)



Source : Ministry of Economy, Trade and Industry (METI) Current Production Statistics Survey  
 (Before 2015 figure is revised)  
 Ministry of Finance Japan (MOF) Trade Statistics of Japan,  
 Japan Bicycle Promotion Institute Processing and Analysis

## 5. Japanese bicycle export

Almost all of the Japanese bicycle export is used bicycle export to developing countries. Table 22 shows main destination countries and areas of Japanese bicycle export in March 2016. Average FOB unit value clearly proves that the bicycle export is used bicycle export. In this part of the report, “Other Motorcycles” is excluded.

Table 22 March 2016 Japanese bicycle export by destination countries and areas

Destination country/area	Total units	Total FOB value (JPY thousand)	Average FOB unit value(JPY)
Myanmar	44,041	73,146	1,661
Afghanistan	40,254	63,590	1,580
Tanzania	30,728	62,788	2,043
Ghana	29,400	47,859	1,628
Cambodia	24,423	41,613	1,704
Philippines	16,232	27,757	1,710
Thailand	15,644	46,120	2,948
UAE	14,488	27,370	1,889
Nigeria	11,544	19,010	1,647
Iraq	8,381	25,162	3,002
Others	32,042	75,960	2,371
Total	267,177	510,375	1,910

Source : Ministry of Finance Japan (MOF) Trade Statistics of Japan,  
 Japan Bicycle Promotion Institute Processing and Analysis

Table 23 shows a fifteen year history of three-month year to date Japanese bicycle export from 2002 to 2016. Total units are the second largest and total value is highest in the last fifteen years. The average unit value in three-month year to date 2016 is JPY 1,878, also the highest in the last fifteen years.

Table 23 Fifteen-year history of Three-Month Year to Date Japanese bicycle export:  
All categories

3 month YTD	Total units	Total FOB value (JPY thousand)	Average FOB unit value (JPY)
2016	777,977	1,460,947	1,878
2015	803,736	1,436,202	1,787
2014	729,651	1,075,151	1,474
2013	722,752	939,012	1,299
2012	699,859	901,501	1,288
2011	557,747	743,842	1,334
2010	555,117	745,569	1,343
2009	492,380	673,801	1,368
2008	554,131	928,910	1,676
2007	386,012	467,747	1,212
2006	304,033	323,202	1,063
2005	224,636	256,521	1,142
2004	236,936	281,915	1,190
2003	161,964	213,115	1,316
2002	152,603	204,930	1,343

Source : Ministry of Finance Japan (MOF) Trade Statistics of Japan,  
Japan Bicycle Promotion Institute Processing and Analysis