

Japanese bicycle production, import and export (Six-Month Year to Date 2018)

1. Preface

The purpose of this report is to show the Japanese bicycle market trend through comprehensive investigation of the Japanese bicycle production, import and export. First, the production of the domestic bicycle manufacturers will be clarified using Ministry of Economy, Trade and Industry (METI) Current Production Statistics, and total production activities including shipment, inventories and time series trend will be explained. Second, due to the current big share of import bicycles in the Japanese bicycle market, bicycle import will be investigated by categories and by time series using Ministry of Finance Japan (MOF) Trade Statistics, and general bicycle market trend will be grasped. Then, comprehensive Japanese bicycle market trend including bicycle production becomes clear. Finally, Japanese bicycle export which is now mostly used bicycle export will be briefly referenced.

During six-month Year to Date 2018, total production units slightly increase; however, total production value decreases when compared to the same period of the previous year. As to import, both total unit and value decrease when compared to the same period of 2017. As a result, the six-month YTD 2018 domestic unit volume which consists of production units and import units is the lowest in the last fifteen years.

From 2018 reports, the time series analysis of production shows 15-year history, same as import and export. Also, METI Current Production Statistics has adopted JPY thousand indication instead of JPY million in value from January 2017. Accordingly, this report shows JPY thousand indication in production value after 2017. Moreover, new HS classification has been created under the motorcycle import category which is “8711.60000 Motorcycles with electric motor for propulsion” since the beginning of 2017. Imported electric power assist bicycles now considered to be categorized in this new category. With this change, the analysis subject has been altered from “Other Motorcycles” into this new category. During the Six-Month Year to Date 2018, import of “8711.60000 Motorcycles with electric motor for propulsion” dramatically increases when compared to the same period of 2017.

2. Japanese bicycle production

2 – 1 Outline of six-month year to date 2018 bicycle production

According to Ministry of Economy, Trade and Industry (METI) Current Production Statistics Survey, Japanese complete bicycle production in six-month year to date 2018 is 454,236 units, and JPY 28,616,203 thousand. Table 1 shows that total unit production decreases 0.3%, and total production value increases 2.4%, compared to the same period of the previous year. Average production unit value in six-month year to date 2018 is up 2.6% from JPY 61,372 in 2017 to JPY 62,999 in 2018.

Table 1 Six-Month Year to Date 2018 Japanese bicycle production

	Total Units	Total Production Value (JPY thousand)	Average Unit Value (JPY)
6-month YTD 2018	454,236	28,616,203	62,999
6-month YTD 2017	455,431	27,950,895	61,372
Variance	-1,195	665,308	1,626
Variance%	-0.3%	2.4%	2.6%

Source : Ministry of Economy, Trade and Industry (METI) Current Production Statistics Survey (2017 figure is revised) Japan Bicycle Promotion Institute Processing and Analysis
Due to round off, Total may not match.

Table 2 shows the detail by product category of Japanese bicycle production during the six-month year to date 2018 compared to the same period of 2017. “Light bicycles” and “Miscellaneous” show both unit and value decrease. On the other hand, “Electric power assist” shows both unit and value increase.

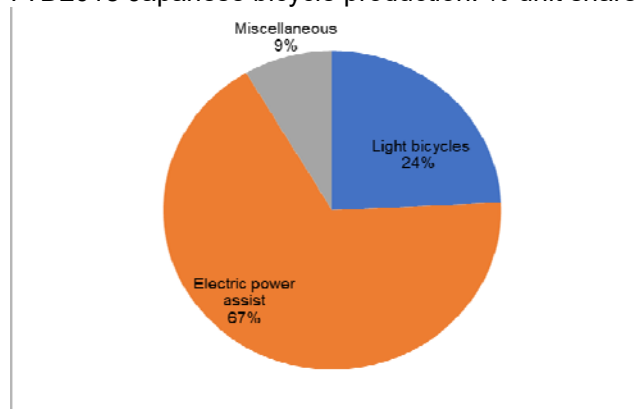
Table 2 Production by category:
Six-Month Year to Date 2018 compared to Six-Month Year to Date 2017

6-month YTD	2018		2017		Variance			
	units	Value (JPY thousand)	units	Value (JPY thousand)	units	%	Value (JPY thousand)	%
Light bicycles	110,053	3,022,176	125,471	3,229,773	-15,418	-12.3	-207,597	-6.4
Electric power assist	305,517	24,712,237	287,461	23,556,711	18,056	6.3	1,155,526	4.9
Miscellaneous	38,666	881,790	42,499	1,164,411	-3,833	-9.0	-282,621	-24.3
Total	454,236	28,616,203	455,431	27,950,895	-1,195	-0.3	665,308	2.4

Source : Ministry of Economy, Trade and Industry (METI) Current Production Statistics Survey (2017 figure is revised) Japan Bicycle Promotion Institute Processing and Analysis
Due to round off, Total may not match.

Chart A shows a graphic presentation of six-month year to date 2018 Japanese bicycle unit production share by category based on Table 2. “Electric power assist” captures 67% share, and “Light bicycles” follows capturing 24% share.

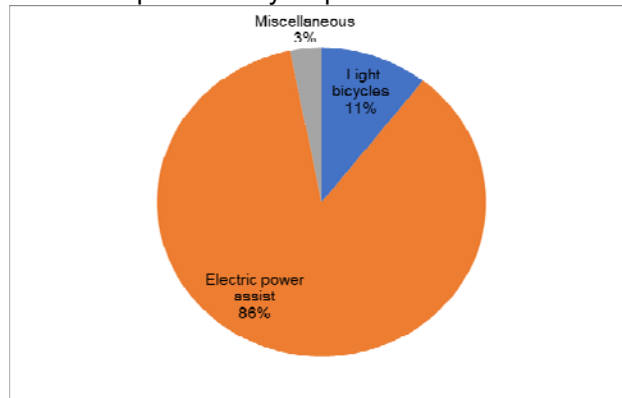
Chart A
Six-Month YTD2018 Japanese bicycle production: % unit share by category



Source : Ministry of Economy, Trade and Industry (METI) Current Production Statistics Survey, Japan Bicycle Promotion Institute Processing and Analysis

Chart B shows a graphic presentation of six-month year to date 2018 Japanese bicycle production value share by category also based on Table 2. “Electric power assist” captures 86% share.

Chart B
Six-Month YTD2018 Japanese bicycle production: % value share by category



Source : Ministry of Economy, Trade and Industry (METI) Current Production Statistics Survey, Japan Bicycle Promotion Institute Processing and Analysis

Table 3 shows average production unit value by product category in six-month year to date 2018 compared to the same period of 2017. “Light bicycles” shows increase, on the other hand, “Electric power assist” and “Miscellaneous” show decrease.

Table 3 Average Unit Value by product category:
Six-Month Year to Date 2018 compared to Six-Month Year to Date 2017

Category	Average Unit Value (JPY) 6-month YTD 2018	Average Unit Value (JPY) 6-month YTD 2017	Variance (JPY)	Variance (%)
Light bicycles	27,461	25,741	1,720	6.7
Electric power assist	80,887	81,948	-1,061	-1.3
Miscellaneous	22,805	27,399	-4,593	-16.8
Total	62,999	61,372	1,626	2.6

Source : Ministry of Economy, Trade and Industry (METI) Current Production Statistics Survey (2017 figure is revised) Japan Bicycle Promotion Institute Processing and Analysis
Due to round off, Total may not match.

Table 4 shows production units, total value and average unit value of “Electric power assist bicycles” by month.

Table 4
Production of “Electric power assist bicycles” by month: 2018 compared to 2017

	2018			2017			Variance of unit production	Variance of production value (JPY thousand)	Variance of average unit value (JPY)
	Unit production	Production value (JPY thousand)	Average unit value (JPY)	Unit production	Production value (JPY thousand)	Average unit value (JPY)			
January	46,507	3,774,633	81,163	42,881	3,353,599	78,207	3,626	421,034	2,956
February	54,734	4,613,710	84,293	45,846	3,598,906	78,500	8,888	1,014,804	5,793
March	60,222	4,722,509	78,418	54,542	4,308,845	79,000	5,680	413,664	-582
April	48,918	3,725,556	76,159	48,120	4,160,301	86,457	798	-434,745	-10,298
May	48,452	4,019,285	82,954	45,740	3,923,416	85,776	2,712	95,869	-2,823
June	46,684	3,856,544	82,610	50,332	4,211,644	83,677	-3,648	-355,100	-1,068
YTD	305,517	24,712,237	80,887	287,461	23,556,711	81,948	18,056	1,155,526	-1,061

Source : Ministry of Economy, Trade and Industry (METI) Current Production Statistics Survey (2017 figure is revised) Japan Bicycle Promotion Institute Processing and Analysis
Due to round off, Total may not match.

2 – 2 Comprehensive production, shipments and inventory status of the Japanese bicycle manufacturers

Table 5 shows comprehensive manufacturing and sales condition including production, receipts, shipments (sales and others) and month end inventory in six-month year to date 2018 compared to the same period of 2017.

Table 5 Production, shipments and inventory of the Japanese bicycle manufacturers: Six-Month Year to Date 2018 compared to Six-Month Year to Date 2017

Category	Production		Receipts (Units)	Shipments			June end Inventory (Units)
	Units	Value (JPY thousand)		Sales		Others (Units)	
				Units	Value (JPY thousand)		
6-month YTD 2018 Light bicycles	110,053	3,022,176	310,002	322,186	5,688,588	129,673	31,195
6-month YTD 2017 Light bicycles	125,471	3,229,773	380,065	383,256	6,533,854	151,639	55,554
Variance %	-12.3	-6.4	-18.4	-15.9	-12.9	-14.5	-43.8
6-month YTD 2018 Electric power assist	305,517	24,712,237	260,184	356,642	29,085,461	193,328	64,199
6-month YTD 2017 Electric power assist	287,461	23,556,711	253,203	329,840	26,081,014	219,431	30,106
Variance %	6.3	4.9	2.8	8.1	11.5	-11.9	113.2
6-month YTD 2018 Miscellaneous	38,666	881,790	182,167	175,690	3,948,415	41,452	42,047
6-month YTD 2017 Miscellaneous	42,499	1,164,411	232,876	200,030	4,514,786	69,169	39,400
Variance %	-9.0	-24.3	-21.8	-12.2	-12.5	-40.1	6.7
6-month YTD 2018 Total	454,236	28,616,203	752,353	854,518	38,722,464	364,453	137,441
6-month YTD 2017 Total	455,431	27,950,895	866,144	913,126	37,129,654	440,239	125,060
Variance %	-0.3	2.4	-13.1	-6.4	4.3	-17.2	9.9

Source : Ministry of Economy, Trade and Industry (METI) Current Production Statistics Survey
(2017 figure is revised) Japan Bicycle Promotion Institute Processing and Analysis
Due to round off, Total may not match.

Total receipts units in six-month year to date 2018 decrease 13.1% compared to six-month year to date 2017. “Light bicycles” and “Miscellaneous” greatly decrease; however, increase of “Electric power assist” is slight.

Total units of shipments sales in six-month year to date 2018 decrease 6.4% compared to that of six-month year to date 2017. Again, “Light bicycles” and “Miscellaneous” show great decrease.

Total value of shipments sales increases by 4.3% in six-month year to date 2018 compared to the same period of 2017. “Electric power assist” increases, but “Light bicycles” and “Miscellaneous” decrease.

Total units of shipments others in six-month year to date 2018 decreases by 17.2% compared to the same period of 2017. All three categories show decrease. Shipments others are principally the commissioned products shipped to the consigners.

Total month end inventory in June 2018 is 137,441 units, 9.9% increase compared to June 2017. “Electric power assist” inventory greatly increases.

2 – 3 Fifteen-year history of six-month year to date bicycle production

Table 6 shows a fifteen-year history of six-month year to date Japanese bicycle production, shipments and June end inventory from 2004 to 2018.

Table 6 Fifteen-year history of bicycle production and shipments:
Six-Month Year to Date June end inventory by Japanese bicycle manufactures

6-month YTD	Production			Shipments			June end Inventory (Units)
	Units	Value*	Average Unit Value (JPY)	Units	Value*	Average Unit Value (JPY)	
2018	454,236	28,616,203	62,999	854,518	38,722,464	45,315	137,441
2017	455,431	27,950,895	61,372	913,126	37,129,654	40,662	125,060
2016	497,354	28,638	57,581	910,085	33,163	36,439	121,504
2015	460,063	23,570	51,232	870,255	29,179	33,529	116,605
2014	507,928	24,927	49,076	996,867	30,429	30,525	116,260
2013	501,245	21,724	43,340	1,036,191	28,951	27,940	192,663
2012	572,870	23,413	40,870	1,518,578	33,996	22,387	212,882
2011	573,193	22,576	39,386	1,764,506	37,151	21,055	171,886
2010	571,753	20,103	35,160	1,720,957	32,846	19,086	210,186
2009	554,590	17,143	30,911	1,730,486	30,985	17,905	190,256
2008	582,440	14,409	24,739	1,942,549	29,031	14,945	191,694
2007	614,441	13,200	21,483	2,060,732	26,659	12,937	209,947
2006	755,461	14,282	18,905	2,281,242	27,158	11,905	232,646
2005	1,112,587	17,621	15,838	2,901,513	32,278	11,125	299,657
2004	1,358,417	20,140	14,826	2,866,097	31,986	11,160	318,157

Source : Ministry of Economy, Trade and Industry (METI) Current Production Statistics Survey
(Before 2017 figure is revised)

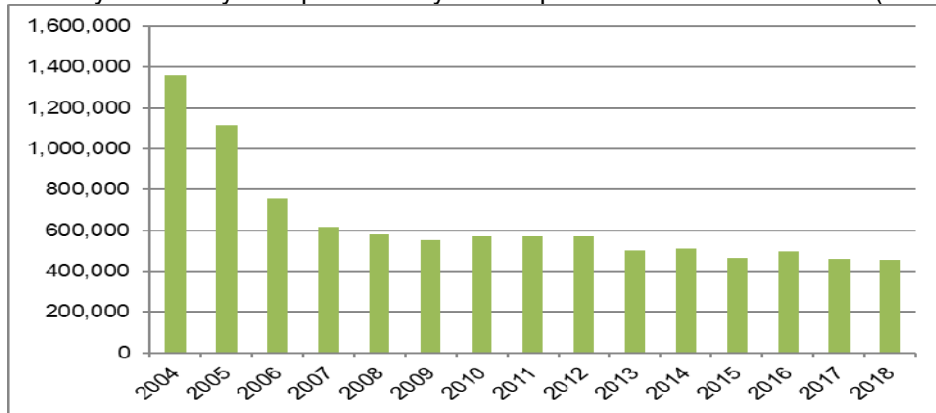
Japan Bicycle Promotion Institute Processing and Analysis

*Before 2016 JPY million, after 2017 JPY thousand

Production units in six-month year to date 2018 are the lowest in the last fifteen years. However, production value in this period is the second. With these facts, the average production unit value is the highest in fifteen years. Also, shipments units in six-month year to date 2018 are the lowest in fifteen years, and shipments value in six-month year to date 2018 is the highest, make the average shipments unit value in six-month year to date 2018 the highest. When compared average production unit value to average shipments unit value, average production unit value has been higher than average shipments unit value for fifteen consecutive years. Month end inventory of June 2018 is 137,441 units, eleventh in the last fifteen years.

Chart C shows a graphic presentation of this fifteen-year history of Japanese bicycle unit production during the six-month year to date from 2004 to 2018 based on Table 6. Unit production shows low level in trend.

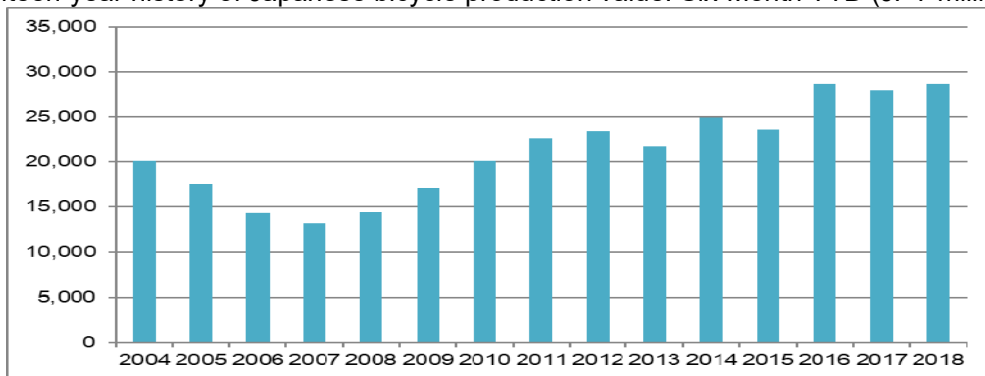
Chart C
Fifteen-year history of Japanese bicycle unit production: Six-Month YTD (units)



Source : Ministry of Economy, Trade and Industry (METI) Current Production Statistics Survey, Japan Bicycle Promotion Institute Processing and Analysis

Chart D shows a graphic presentation of the fifteen-year history of Japanese bicycle production value during the six-month year to date from 2004 to 2018 also based on Table 6.

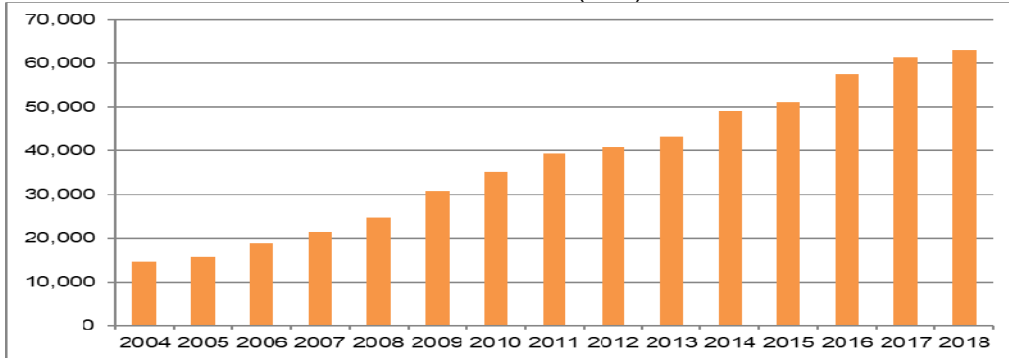
Chart D
Fifteen-year history of Japanese bicycle production value: Six-Month YTD (JPY million)



Source : Ministry of Economy, Trade and Industry (METI) Current Production Statistics Survey, Japan Bicycle Promotion Institute Processing and Analysis

Chart E shows a graphic presentation of the fifteen-year history of Japanese bicycle production average unit value during the six-month year to date from 2004 to 2018 also based on Table 6. Production average unit value shows increase in trend.

Chart E
Fifteen-year history of Japanese bicycle production average unit value:
Six-Month YTD (JPY)



Source : Ministry of Economy, Trade and Industry (METI) Current Production Statistics Survey, Japan Bicycle Promotion Institute Processing and Analysis

Table 7 shows the fifteen-year history of the total unit production by month.

Table 7 Fifteen-year history of total production units by month (units)

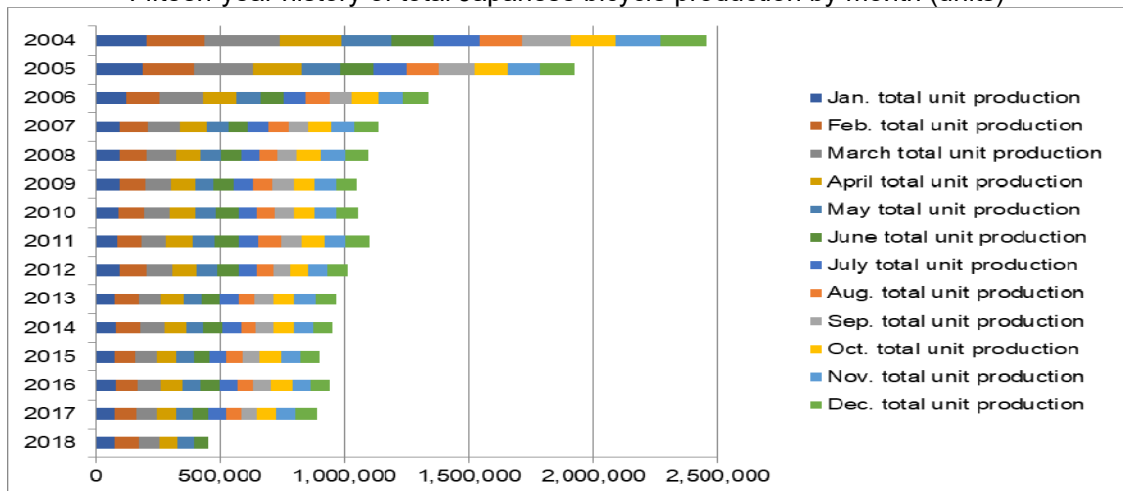
	Jan. total unit production	Feb. total unit production	March total unit production	April total unit production	May total unit production	June total unit production
2018	78,463	93,312	85,655	70,043	64,251	62,512
2017	79,215	86,276	82,628	74,710	63,706	68,896
2016	82,586	88,069	94,670	81,062	72,186	78,781
2015	78,891	81,242	89,722	75,857	66,218	68,133
2014	84,512	93,408	100,416	83,216	72,121	74,255
2013	79,022	92,667	93,062	88,877	75,906	71,711
2012	96,874	105,350	106,202	95,001	85,528	83,915
2011	86,445	98,081	98,935	107,181	90,542	92,009
2010	93,923	99,424	106,524	98,097	87,516	86,269
2009	96,944	99,314	106,639	94,506	76,287	80,900
2008	97,728	104,912	121,903	96,456	82,921	78,520
2007	99,537	108,413	130,721	108,017	86,039	81,714
2006	124,909	133,470	177,599	128,017	97,944	93,522
2005	186,677	207,574	239,561	197,996	151,547	129,232
2004	204,286	233,162	302,975	250,436	197,546	170,012

	July total unit production	Aug. total unit production	Sep. total unit production	Oct. total unit production	Nov. total unit production	Dec. total unit production	Total unit production
2018							454,236
2017	66,260	60,279	67,975	74,071	81,506	85,328	890,850
2016	71,533	64,278	71,472	82,749	76,539	75,100	939,025
2015	64,647	62,481	74,354	82,311	79,144	75,095	898,095
2014	74,981	62,167	68,705	81,603	78,727	77,437	951,548
2013	72,325	66,889	74,392	82,781	84,937	83,385	965,954
2012	74,820	65,045	68,721	73,476	73,695	83,687	1,012,314
2011	83,200	86,553	88,460	86,528	87,020	96,712	1,101,666
2010	75,897	72,056	77,555	82,694	86,498	90,498	1,056,951
2009	80,068	76,206	81,360	88,312	85,103	83,830	1,049,469
2008	76,552	70,488	80,661	95,816	98,763	90,212	1,094,932
2007	79,147	79,509	81,679	91,745	93,341	95,744	1,135,606
2006	87,738	94,248	94,359	105,347	99,636	97,723	1,334,512
2005	138,579	130,081	138,979	135,527	132,069	138,614	1,926,436
2004	185,261	167,839	199,459	181,744	180,862	181,059	2,454,641

Source : Ministry of Economy, Trade and Industry (METI) Current Production Statistics Survey, Japan Bicycle Promotion Institute Processing and Analysis (Before 2017 figure is revised)

Chart F shows a graphic presentation of the fifteen-year history of total production units by month based on Table 7. This chart shows that the bicycle production is carried out relatively equally every month.

Chart F
Fifteen-year history of total Japanese bicycle production by month (units)



Source : Ministry of Economy, Trade and Industry (METI) Current Production Statistics Survey, Japan Bicycle Promotion Institute Processing and Analysis

Table 8 shows a fifteen-year history of six-month year to date Japanese bicycle unit production by category.

Table 8 Fifteen-year history of Six-Month Year to Date Japanese bicycle unit production by categories (unit)

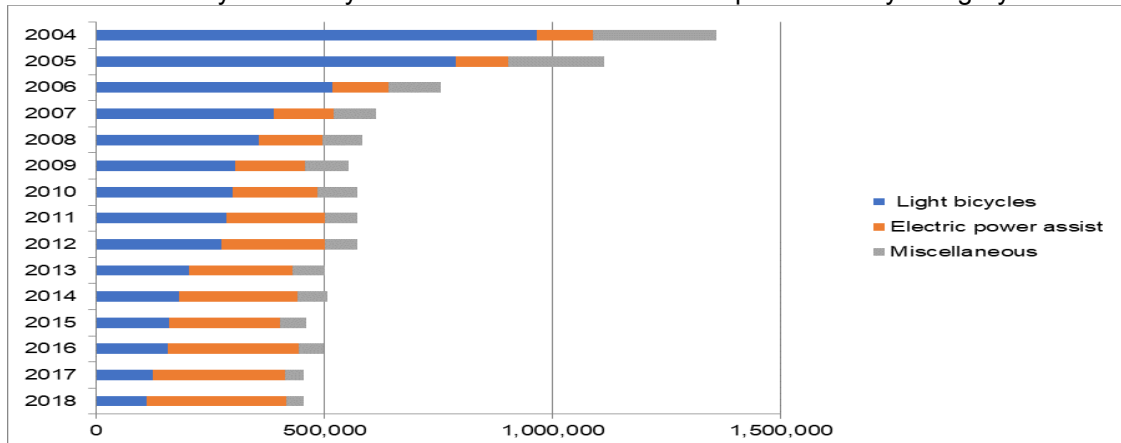
	Light bicycles	Electric power assist	Miscellaneous	Total
2018	110,053	305,517	38,666	454,236
2017	125,471	287,461	42,499	455,431
2016	156,072	287,455	53,827	497,354
2015	161,228	242,150	56,685	460,063
2014	183,076	258,625	66,227	507,928
2013	203,896	227,086	70,263	501,245
2012	275,061	227,108	70,701	572,870
2011	285,584	216,638	70,971	573,193
2010	299,341	186,858	85,554	571,753
2009	303,884	154,006	96,700	554,590
2008	357,363	138,377	86,700	582,440
2007	389,936	131,511	92,994	614,441
2006	517,128	123,999	114,334	755,461
2005	788,340	113,236	211,011	1,112,587
2004	966,470	122,366	269,581	1,358,417

From 2011, "Children & Infant bicycles", "Mini-cycles", "Mountain bikes" and "Special bicycles" have been combined into "Miscellaneous". "Miscellaneous" between 2004 and 2010 include these four categories.

Source : Ministry of Economy, Trade and Industry (METI) Current Production Statistics Survey, Japan Bicycle Promotion Institute Processing and Analysis

Chart G shows a graphic presentation of the fifteen-year history of six-month year to date unit production by category based on Table 8. This chart shows that "Light bicycles" are decreasing, and "Electric power assist" is increasing.

Chart G
Fifteen-year history of Six-Month Year to Date unit production by category



Source : Ministry of Economy, Trade and Industry (METI) Current Production Statistics Survey, Japan Bicycle Promotion Institute Processing and Analysis

3. Japanese bicycle import

Bicycle import by category is mentioned below. To begin with, import categories and HS numbers in Japan are classified as follows. "Electric power assist bicycles" is not classified as a single category and considered to be included in the category of "Motorcycles with electric motor for propulsion" in Trade Statistics. Please note that "Motorcycles with electric motor for propulsion" includes all electric motorcycles.

Table 9 Import categories and HS numbers

HS number and product category	Bicycle type
8712.00100 Mountain bikes	<ul style="list-style-type: none"> • MTB(includes V brake or disk brake equipped) • Cross bikes
8712.00211 Mini-cycles	<ul style="list-style-type: none"> • Mini-cycles • Small wheel foldable bicycles • BMX
8712.00218 Infant bicycles	<ul style="list-style-type: none"> • Infant bicycles(12 – 16 inch) • Toy bicycles(12 inch two wheel) • Unicycles(12 – 16 inch)
8712.00219 Children bicycles	<ul style="list-style-type: none"> • Children bicycles(18 – 24 inch) • Junior MTB(18 – 24 inch) • Unicycles(18 – 24 inch)
8712.00291 Light bicycles	<ul style="list-style-type: none"> • Light bicycles(excludes outer derailleur equipped) • Single speed, sports use bicycles equipped with inner derailleur.
8712.00299 Miscellaneous	<ul style="list-style-type: none"> • Sports use bicycles • Light bicycles equipped with outer derailleur • Junior MTB(26 inch)
8711.60000 Motorcycles with electric motor for propulsion	<ul style="list-style-type: none"> • Electric motor cycles and electric power assist bicycles considered to be included.

Source : Japan Bicycle Promotion Institute

3 – 1 Outline of six-month year to date 2018 bicycle import

Table 10 shows Japanese bicycle import of all product categories excluding “Motorcycles with electric motor for propulsion” in six-month year to date 2018 compared to the same period of 2017. Unit total is 3,479,162, 8.2% decrease compared to the same period of 2017. On the other hand, total CIF value is JPY40,241,799 thousands, decreases by 1.0% compared to the same period of 2017, resulted in average CIF unit value of JPY11,567, 7.9% increase.

The currency exchange rate is investigated. The average dollar-yen exchange rate during six-month year to date 2017 was US\$1=JPY112.83; however, it gets US\$1=JPY108.93 in six-month year to date 2018(Refer chief custom inspector published rate). Japanese Yen gets stronger during this period.

Table 10 Japanese bicycle import:
Six-Month Year to Date 2018 compared to Six-Month Year to Date 2017
 (“Motorcycles with electric motor for propulsion” is not included)

	Total units	Total CIF Value (JPY thousand)	Average CIF unit value (JPY)
6-month YTD 2018	3,479,162	40,241,799	11,567
6-month YTD 2017	3,790,851	40,642,307	10,721
Variance	-311,689	-400,508	845
Variance %	-8.2	-1.0	7.9

Source : Ministry of Finance Japan (MOF) Trade Statistics of Japan,
Japan Bicycle Promotion Institute Processing and Analysis

Table 10 Annex shows six-month year to date 2018 import of “Motorcycles with electric motor for propulsion” compared to the same period of 2017 for reference. Both unit and value show great increase; however, average unit value shows decrease.

Table 10 Annex (Reference) Japanese import of “Motorcycles with electric motor for propulsion”

Six-Month Year to Date 2018 compared to Six-Month Year to Date 2017

	Total units	Total CIF Value (JPY thousand)	Average CIF unit value (JPY)
6-month YTD 2018	146,860	5,733,084	39,038
6-month YTD 2017	88,903	3,734,606	42,008
Variance	57,957	1,998,478	-2,970
Variance %	65.2	53.5	-7.1

Source : Ministry of Finance Japan (MOF) Trade Statistics of Japan, Japan Bicycle Promotion Institute Processing and Analysis

3 – 2 Six-month year to date 2018 bicycle import by category

Table 11 shows six-month year to date 2018 Japanese bicycle import by category.

Table 11
Japanese bicycle import in Six-Month Year to Date 2018 by category

HS number and category	Total units	Total CIF Value (JPY thousand)	Average CIF unit value (JPY)
8712.00100 Mountain bikes	79,956	1,506,462	18,841
8712.00211 Mini-cycles	133,224	1,597,100	11,988
8712.00218 Infant bicycles	237,218	1,761,004	7,424
8712.00219 Children bicycles	782,195	7,248,623	9,267
8712.00291 Light bicycles	983,502	9,536,541	9,697
8712.00299 Miscellaneous	1,263,067	18,592,069	14,720
Total	3,479,162	40,241,799	11,567

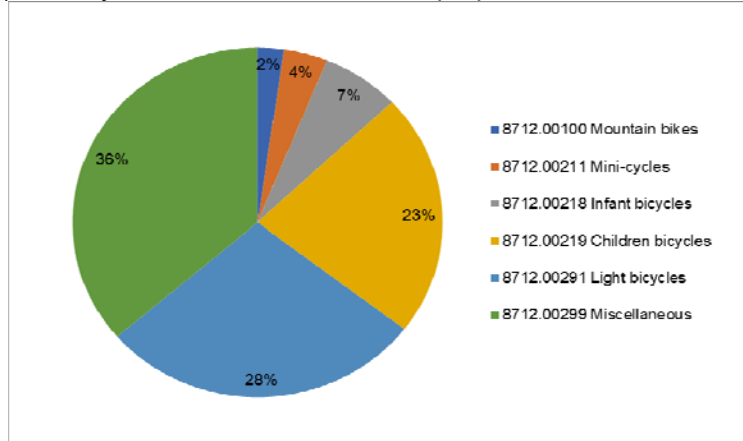
8711.60000 Motorcycles with electric motor for propulsion	146,860	5,733,084	39,038
---	---------	-----------	--------

Source : Ministry of Finance Japan (MOF) Trade Statistics of Japan, Japan Bicycle Promotion Institute Processing and Analysis

The average CIF unit value of HS8712.00100 “Mountain bikes” is JPY 18,841, the highest among the categories except for “Motorcycles with electric motor for propulsion”. The average CIF unit value of HS8712.00291 “Light bicycles” is JPY9,697, and its unit volume is the second biggest, following HS8712.00299 “Miscellaneous” which includes sports use bicycles and light bicycles equipped with outer derailleur. The unit volume and total CIF value of HS8712.00299 “Miscellaneous” are the highest among the categories. Its average CIF unit value is JPY 14,720.

Chart H shows a graphic presentation of six-month year to date 2018 Japanese bicycle import unit share by category based on Table 11. “Miscellaneous” captures 36% share and “Light bicycles” captures 28% share as well.

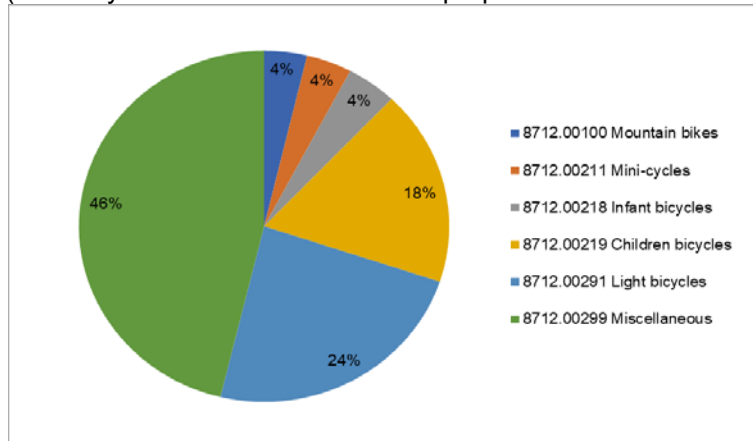
Chart H
Six-Month YTD2018 Japanese bicycle import: Unit share by category
("Motorcycles with electric motor for propulsion" is not included)



Source : Ministry of Finance Japan (MOF) Trade Statistics of Japan,
Japan Bicycle Promotion Institute Processing and Analysis

Chart I shows a graphic presentation of six-month year to date 2018 Japanese bicycle import value share by category also based on Table 11. "Miscellaneous" captures 46% and "Light bicycles" captures 24% share.

Chart I
Six-Month YTD2018 Japanese bicycle import: Value share by category
("Motorcycles with electric motor for propulsion" is not included)



Source : Ministry of Finance Japan (MOF) Trade Statistics of Japan,
Japan Bicycle Promotion Institute Processing and Analysis

Table 12 shows a six-month year to date 2018 Japanese bicycle import by category compared to the same period of the previous year. "Mountain bikes", "Infant bicycles", "Children bicycles" and "Light bicycles" show decrease in both unit and value. However, "Mini-cycles" show great increase both in unit and value. Bicycle import for bike share may be reflected in this category.

Table 12 Six-Month Year to Date 2018 Japanese bicycle import by category compared to Six-Month Year to Date 2017

6-month YTD	2018		2017		Variance %	
	units	Total CIF value (JPY thousand)	units	Total CIF value (JPY thousand)	Units	CIF value
8712.00100 Mountain bikes	79,956	1,506,462	92,228	1,735,326	-13.3%	-13.2%
8712.00211 Mini-cycles	133,224	1,597,100	91,664	1,190,832	45.3%	34.1%
8712.00218 Infant bicycles	237,218	1,761,004	266,549	1,910,499	-11.0%	-7.8%
8712.00219 Children bicycles	782,195	7,248,623	933,076	8,379,739	-16.2%	-13.5%
8712.00291 Light bicycles	983,502	9,536,541	1,147,178	10,882,336	-14.3%	-12.4%
8712.00299 Miscellaneous	1,263,067	18,592,069	1,260,156	16,543,575	0.2%	12.4%
Total	3,479,162	40,241,799	3,790,851	40,642,307	-8.2%	-1.0%
Average unit value (JPY)		11,567		10,721		7.9%

8711.60000 Motorcycles with electric motor for propulsion	146,860	5,733,084	88,903	3,734,606	65.2%	53.5%
Average unit value (JPY)		39,038		42,008		-7.1%

Source : Ministry of Finance Japan (MOF) Trade Statistics of Japan, Japan Bicycle Promotion Institute Processing and Analysis

3 – 3 Fifteen year history of six-month year to date bicycle import

Table 13 shows a fifteen-year history of six-month year to date Japanese bicycle import.

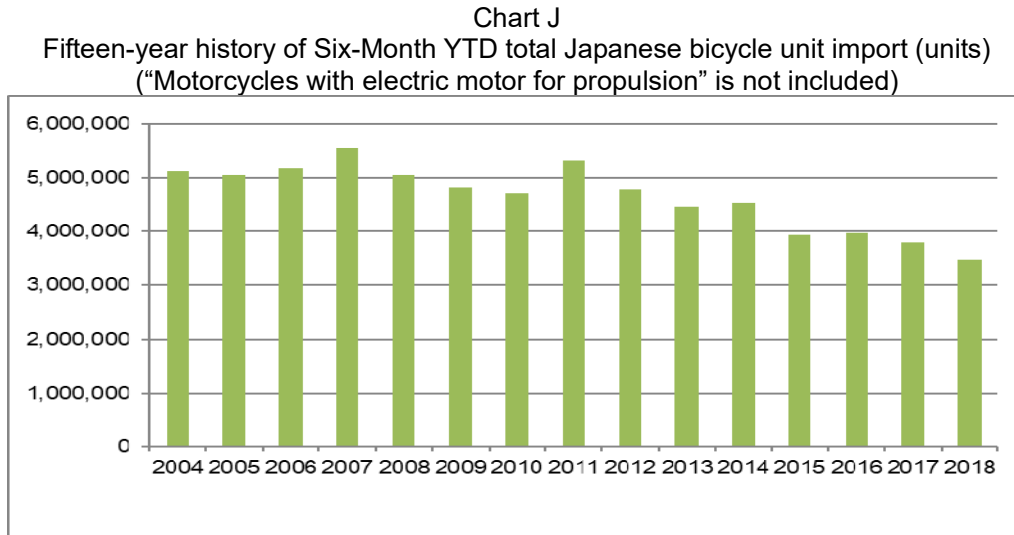
Table 13 Fifteen-year history of Six-Month Year to Date Japanese bicycle import: All categories (“Motorcycles with electric motor for propulsion” is not included)

6-month YTD	Total import units	Total CIF value (JPY thousand)	Average CIF unit value (JPY)
2018	3,479,162	40,241,799	11,567
2017	3,790,851	40,642,307	10,721
2016	3,973,100	45,194,140	11,375
2015	3,940,565	50,889,066	12,914
2014	4,537,063	47,623,581	10,497
2013	4,471,862	43,332,516	9,690
2012	4,798,280	41,064,255	8,558
2011	5,331,948	41,315,173	7,749
2010	4,723,113	36,870,424	7,806
2009	4,821,939	41,444,013	8,595
2008	5,067,152	42,007,396	8,290
2007	5,564,067	43,338,309	7,789
2006	5,176,368	37,205,484	7,188
2005	5,066,553	31,690,477	6,255
2004	5,136,236	30,997,096	6,035

Source : Ministry of Finance Japan (MOF) Trade Statistics of Japan, Japan Bicycle Promotion Institute Processing and Analysis

Total unit import in six-month year to date 2018 is the lowest in the last fifteen years. On the other hand, total CIF value in six-month year to date 2018 is the eleventh in this history; make the average CIF unit value JPY 11,567, the second highest in this period.

Chart J shows the fifteen-year history of six-month year to date total import units based on Table 13. Unit import shows decrease in trend.



Source : Ministry of Finance Japan (MOF) Trade Statistics of Japan,
Japan Bicycle Promotion Institute Processing and Analysis

Chart K shows the fifteen-year history of six-month year to date total import CIF value also based on Table 13.

Chart K Fifteen year history of Six-Month YTD total Japanese bicycle import CIF value
(JPY thousand)
("Motorcycles with electric motor for propulsion" is not included)

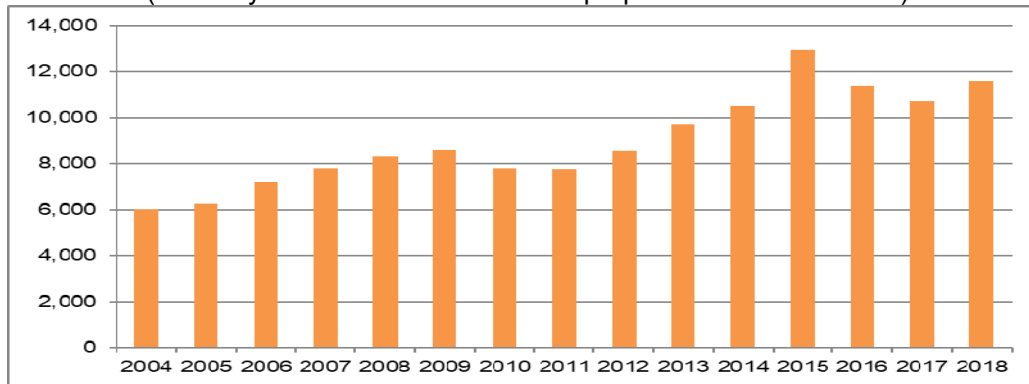


Source : Ministry of Finance Japan (MOF) Trade Statistics of Japan,
Japan Bicycle Promotion Institute Processing and Analysis

Chart L shows the fifteen-year history of six-month year to date average CIF unit import value also based on Table 13.

Chart L Fifteen year history of Six-Month YTD Japanese bicycle average
CIFunit import value (JPY)

("Motorcycles with electric motor for propulsion" is not included)



Source : Ministry of Finance Japan (MOF) Trade Statistics of Japan,
Japan Bicycle Promotion Institute Processing and Analysis

Table 14 shows the total unit import by month.

Table 14 Fifteen year history of total import units by month:
("Motorcycles with electric motor for propulsion" is not included)

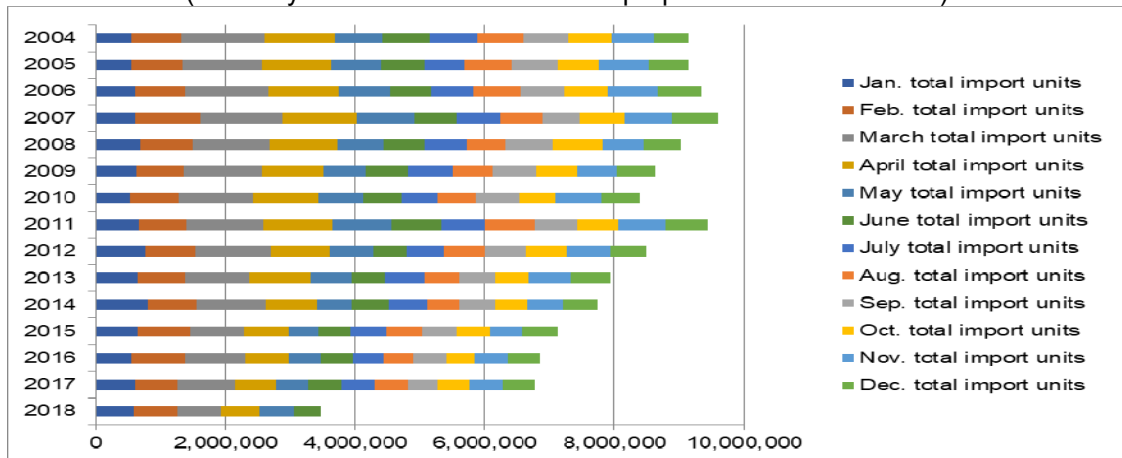
	January total import units	February total import units	March total import units	April total import units	May total import units	June total import units
2018	584,582	672,121	684,815	588,526	515,094	434,024
2017	608,232	654,624	889,358	634,082	499,298	505,257
2016	559,379	823,009	916,762	673,000	493,419	507,531
2015	639,107	809,453	828,696	690,064	462,606	510,639
2014	800,012	758,904	1,067,576	783,049	546,090	581,432
2013	646,439	729,345	997,586	949,665	634,542	514,285
2012	759,838	779,645	1,156,072	904,565	672,252	525,908
2011	661,234	725,936	1,192,986	1,067,890	915,243	768,659
2010	529,116	759,113	1,140,340	1,002,806	691,515	600,223
2009	631,533	717,828	1,226,863	932,220	660,802	652,693
2008	679,048	809,921	1,195,076	1,041,042	718,439	623,626
2007	613,892	988,006	1,275,167	1,152,734	890,124	644,144
2006	602,545	765,063	1,303,124	1,075,231	796,610	633,795
2005	541,343	796,348	1,226,300	1,056,187	777,336	669,039
2004	556,120	767,570	1,280,277	1,081,557	727,411	723,301

	July total import units	Aug. total import units	Sep. total import units	Oct. total import units	Nov. total import units	Dec. total import units	YTD total import units
2018							3,479,162
2017	511,094	522,474	454,877	480,920	514,237	503,346	6,777,799
2016	460,740	464,093	509,475	438,628	518,622	484,729	6,849,387
2015	556,279	542,763	524,133	519,919	484,170	554,615	7,122,444
2014	572,129	504,218	543,409	502,832	540,165	534,548	7,734,364
2013	595,336	535,046	561,806	528,767	640,332	599,246	7,932,395
2012	586,024	629,284	631,719	642,217	649,625	562,295	8,499,444
2011	675,783	776,045	655,654	629,958	722,052	659,152	9,450,592
2010	562,581	582,646	663,734	546,459	719,973	603,440	8,401,946
2009	685,910	619,872	677,716	623,646	620,796	571,838	8,621,717
2008	646,395	612,531	729,659	770,349	625,626	582,061	9,033,773
2007	672,070	649,954	586,098	688,807	741,855	700,463	9,603,314
2006	643,767	724,797	673,445	684,487	767,415	668,893	9,339,172
2005	626,723	720,123	708,659	631,378	780,371	610,012	9,143,819
2004	755,089	715,190	699,179	653,057	648,234	531,426	9,138,411

Source : Ministry of Finance Japan (MOF) Trade Statistics of Japan,
Japan Bicycle Promotion Institute Processing and Analysis

Chart M shows a graphic presentation of the fifteen-year history of total import units by month based on Table 14.

Chart M Fifteen year history of total Japanese bicycle import by month (units)
("Motorcycles with electric motor for propulsion" is not included)



Source : Ministry of Finance Japan (MOF) Trade Statistics of Japan,
Japan Bicycle Promotion Institute Processing and Analysis

Table 15 shows a fifteen-year history of six-month year to date Japanese bicycle unit import by category.

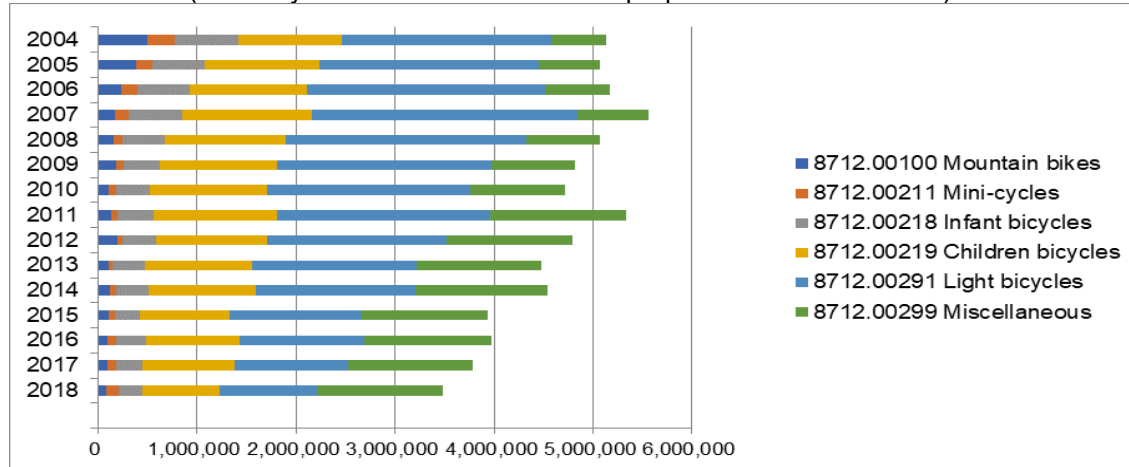
Table 15
Fifteen-year history of Six-Month Year to Date Japanese bicycle unit import
by categories (“Motorcycles with electric motor for propulsion” is not included)

	8712.00100 Mountain bikes	8712.00211 Mini-cycles	8712.00218 Infant bicycles	8712.00219 Children bicycles	8712.00291 Light bicycles	8712.00299 Miscellaneous	Total
2018	79,956	133,224	237,218	782,195	983,502	1,263,067	3,479,162
2017	92,228	91,664	266,549	933,076	1,147,178	1,260,156	3,790,851
2016	94,690	87,748	299,749	949,274	1,254,391	1,287,248	3,973,100
2015	107,818	65,025	254,851	901,826	1,329,178	1,281,867	3,940,565
2014	115,796	73,373	320,422	1,079,838	1,613,470	1,334,164	4,537,063
2013	112,378	36,363	328,153	1,080,442	1,656,647	1,257,879	4,471,862
2012	190,955	53,801	340,845	1,125,604	1,808,960	1,278,115	4,798,280
2011	133,186	65,450	361,109	1,252,489	2,153,138	1,366,576	5,331,948
2010	112,694	72,310	337,421	1,186,829	2,055,075	958,784	4,723,113
2009	178,663	82,579	361,821	1,183,163	2,170,068	845,645	4,821,939
2008	153,604	96,776	422,657	1,217,508	2,438,420	738,187	5,067,152
2007	165,451	140,261	550,506	1,302,037	2,681,058	724,754	5,564,067
2006	236,521	162,182	527,333	1,179,149	2,412,514	658,669	5,176,368
2005	388,361	155,871	535,139	1,154,215	2,213,253	619,714	5,066,553
2004	498,563	283,292	636,625	1,042,198	2,113,227	562,331	5,136,236

Source : Ministry of Finance Japan (MOF) Trade Statistics of Japan,
Japan Bicycle Promotion Institute Processing and Analysis

Chart N shows these import histories.

Chart N
Fifteen-year history of Six-Month YTD Japanese bicycle unit import by category (units)
 (“Motorcycles with electric motor for propulsion” is not included)



Source : Ministry of Finance Japan (MOF) Trade Statistics of Japan,
Japan Bicycle Promotion Institute Processing and Analysis

3 – 4 Main source country/area of Japanese bicycle import

Table 16 shows source countries and areas of six-month year to date 2018 Japanese bicycle import.

Table 16 Main source countries and areas of Japanese bicycle import in Six-Month Year to Date 2018
 (“Motorcycles with electric motor for propulsion” is not included)

Source country/area	Total units	% share of total units	Total CIF Value (JPY thousand)	% share of total value	Average CIF unit value (JPY)
China	3,393,901	97.5	35,153,539	87.4	10,358
Taiwan	72,983	2.1	4,173,081	10.4	57,179
Others	12,278	0.4	915,179	2.3	74,538
Total	3,479,162	100.0	40,241,799	100.0	11,567

Source : Ministry of Finance Japan (MOF) Trade Statistics of Japan,
 Japan Bicycle Promotion Institute Processing and Analysis Due to round off, Total may not match.

“China” continues to be the biggest source country. It captures 97.5% of total units, and 87.4% of total CIF value. The average CIF unit value is JPY 10,358. “Taiwan” follows “China”, capturing 2.1% of total units, and 10.4% of total CIF value. The average CIF unit value is JPY 57,179. These two-combined captures 99.6% of total units and 97.8% of total CIF value.

Table 17 shows Japanese bicycle import from “China” by category.

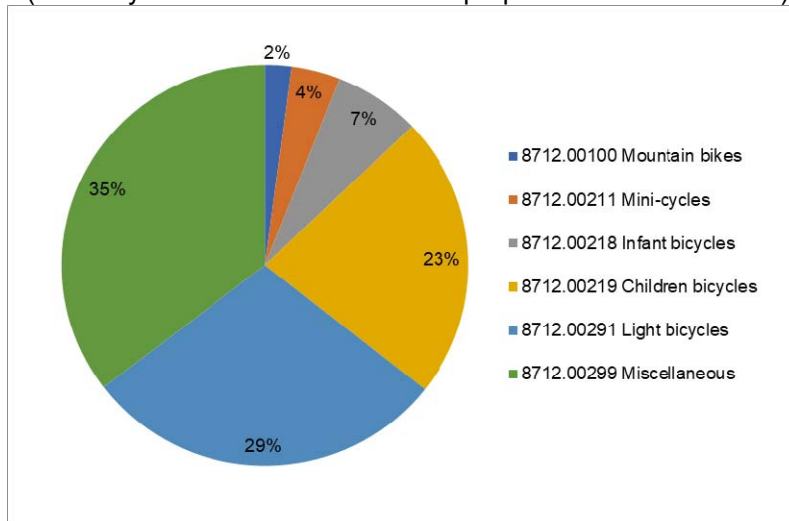
Table 17 Japanese bicycle import from “China” in Six-Month Year to Date 2018
 by category (“Motorcycles with electric motor for propulsion” is not included)

HS number and category	Total units	Total CIF Value (JPY thousand)	Average CIF unit value (JPY)
8712.00100 Mountain bikes	71,342	1,142,447	16,014
8712.00211 Mini-cycles	131,342	1,503,131	11,444
8712.00218 Infant bicycles	232,618	1,582,442	6,803
8712.00219 Children bicycles	774,100	7,089,802	9,159
8712.00291 Light bicycles	982,639	9,503,922	9,672
8712.00299 Miscellaneous	1,201,860	14,331,795	11,925
Total	3,393,901	35,153,539	10,358

Source : Ministry of Finance Japan (MOF) Trade Statistics of Japan,
 Japan Bicycle Promotion Institute Processing and Analysis

Chart O shows a graphic presentation of six-month year to date 2018 Japanese bicycle import unit share from “China” by category based on Table 17. “Miscellaneous” captures 35% share and “Light bicycles” follows to capture 29% share. Unit import volume from “China” is so huge; therefore, this chart looks like Chart H which shows Japanese total unit import share by category.

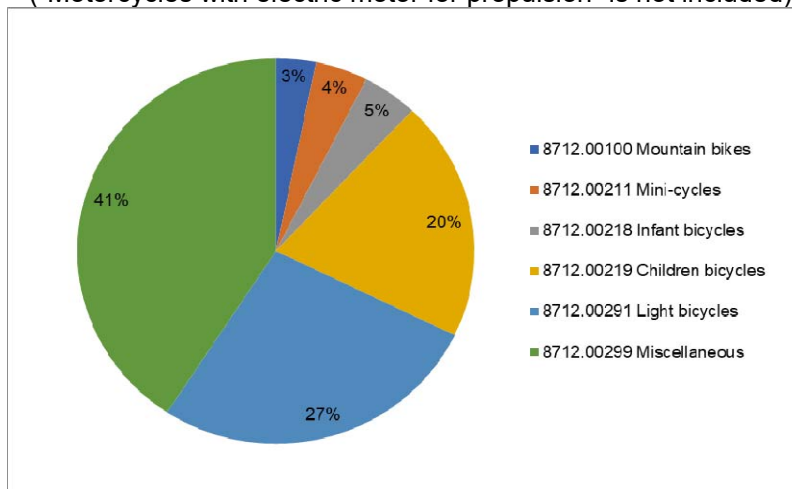
Chart O Six-Month YTD2018 Japanese bicycle import from “China”:
Unit share by category
 (“Motorcycles with electric motor for propulsion” is not included)



Source : Ministry of Finance Japan (MOF) Trade Statistics of Japan,
Japan Bicycle Promotion Institute Processing and Analysis

Chart P shows a graphic presentation of six-month year to date 2018 Japanese bicycle import value share from “China” by category also based on Table 17. “Miscellaneous” captures 41% share and “Light bicycles” follows capturing 27% share.

Chart P Six-Month YTD2018 Japanese bicycle import from “China”:
Value share by category
 (“Motorcycles with electric motor for propulsion” is not included)



Source : Ministry of Finance Japan (MOF) Trade Statistics of Japan,
Japan Bicycle Promotion Institute Processing and Analysis

Then, Table 18 follows to show Japanese bicycle import from “Taiwan” by category.

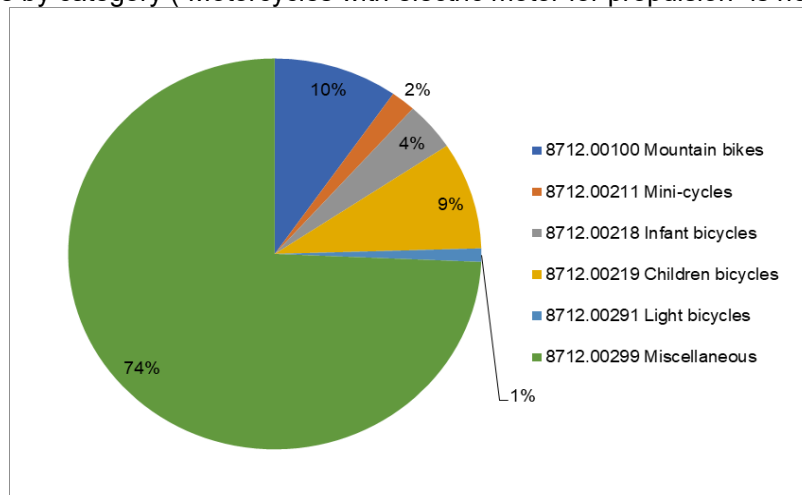
Table 18 Japanese bicycle import from “Taiwan” in Six-Month Year to Date 2018 by category (“Motorcycles with electric motor for propulsion” is not included)

HS number and category	Total units	Total CIF Value (JPY thousand)	Average CIF unit value (JPY)
8712.00100 Mountain bikes	7,092	286,937	40,459
8712.00211 Mini-cycles	1,413	49,470	35,011
8712.00218 Infant bicycles	2,932	17,251	5,884
8712.00219 Children bicycles	6,475	119,546	18,463
8712.00291 Light bicycles	811	26,308	32,439
8712.00299 Miscellaneous	54,260	3,673,569	67,703
Total	72,983	4,173,081	57,179

Source : Ministry of Finance Japan (MOF) Trade Statistics of Japan, Japan Bicycle Promotion Institute Processing and Analysis

Chart Q shows a graphic presentation of six-month year to date 2018 Japanese bicycle import unit share from “Taiwan” by category based on Table 18. This chart looks totally different from Chart H which shows total import or Chart O which shows import from “China”. “Miscellaneous” captures 74% big share and “Mountain Bikes” follows to capture 10% share. On the other hand, “Light bicycles” only captures 1% share.

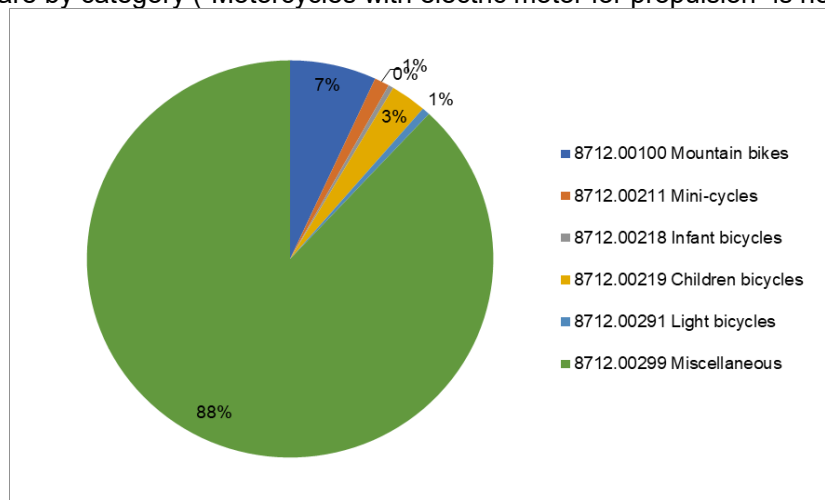
Chart Q Six-Month YTD2018 Japanese bicycle import from “Taiwan”: Unit share by category (“Motorcycles with electric motor for propulsion” is not included)



Source : Ministry of Finance Japan (MOF) Trade Statistics of Japan, Japan Bicycle Promotion Institute Processing and Analysis

Moreover, Chart R shows a graphic presentation of six-month year to date 2018 Japanese bicycle import value share from “Taiwan” by category also based on Table 18. The characteristics appear more remarkably than the unit import share. “Miscellaneous” captures 88% share and “Mountain Bikes” follows capturing 7% share. The share of “Light bicycles” is only 1%.

Chart R Six-Month YTD2018 Japanese bicycle import from “Taiwan”:
Value share by category (“Motorcycles with electric motor for propulsion” is not included)



Source : Ministry of Finance Japan (MOF) Trade Statistics of Japan,
Japan Bicycle Promotion Institute Processing and Analysis

Then, Table 19 shows source countries and areas of six-month year to date 2018 Japanese “Motorcycles with electric motor for propulsion” import compared to that of 2017 for reference.

Table 19 (Reference) Main source countries and areas of Japanese
“Motorcycles with electric motor for propulsion” import
in Six-Month Year to Date 2018 compared to 2017

Source country/area	Total units	% share of total units	Total CIF Value (JPY thousand)	% share of total value	Average CIF unit value (JPY)
6-month YTD 2018 China	143,599	97.8	5,560,838	97.0	38,725
6-month YTD 2017 China	88,576	99.6	3,605,823	96.6	40,709
Variance %	55,023	-1.9	1,955,015	0.4	-1,984
6-month YTD 2018 Taiwan	3,048	2.1	100,114	1.7	32,846
6-month YTD 2017 Taiwan	235	0.3	24,400	0.7	103,830
Variance %	2,813	1.8	75,714	1.1	-70,984
6-month YTD 2018 Others	213	0.1	72,132	1.3	338,648
6-month YTD 2017 Others	92	0.1	104,383	2.8	1,134,598
Variance %	121	0.0	-32,251	-1.5	-795,950
6-month YTD 2018 Total	146,860	100.0	5,733,084	100.0	39,038
6-month YTD 2017 Total	88,903	100.0	3,734,606	100.0	42,008
Variance %	57,957	0.0	1,998,478	0.0	-2,970

Source : Ministry of Finance Japan (MOF) Trade Statistics of Japan,
Japan Bicycle Promotion Institute Processing and Analysis Due to round off, Total may not match.

4. Domestic unit volume

Almost all the Japanese bicycle export is used bicycle export to developing countries. Therefore, production units plus import units can be defined as domestic unit volume. Table 20 shows a fifteen-year history of six-month year to date domestic unit volume. Six-Month Year to Date 2018 domestic unit volume is 3,933,398, the lowest in the last fifteen years. And its domestic production ratio is 11.5%.

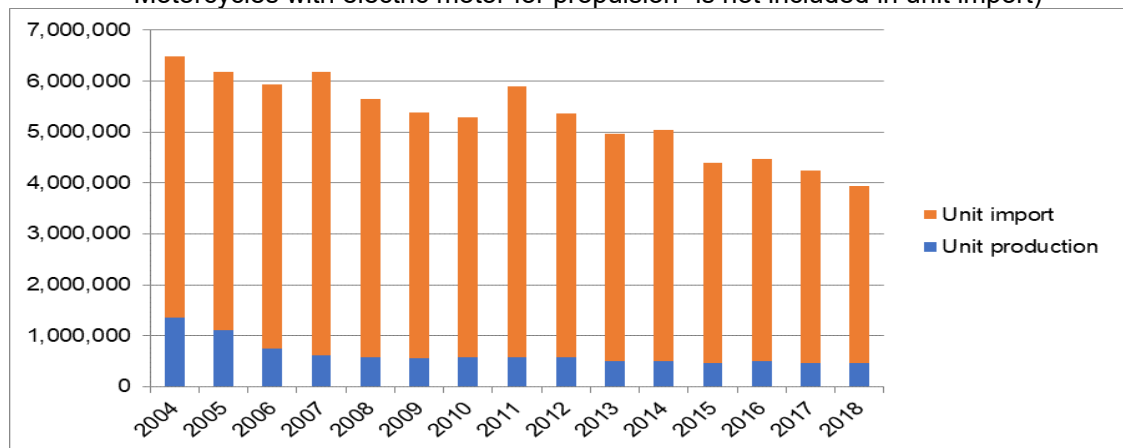
Table 20 Fifteen-year history of Six-Month Year to Date
Japanese bicycle domestic unit volume
("Electric power assist bicycles" is included in unit production;
"Motorcycles with electric motor for propulsion" is not included in unit import)

6-month YTD	Unit production	Unit import	Domestic unit volume	Domestic production ratio %
2018	454,236	3,479,162	3,933,398	11.5
2017	455,431	3,790,851	4,246,282	10.7
2016	497,354	3,973,100	4,470,454	11.1
2015	460,063	3,940,565	4,400,628	10.5
2014	507,928	4,537,063	5,044,991	10.1
2013	501,245	4,471,862	4,973,107	10.1
2012	572,870	4,798,280	5,371,150	10.7
2011	573,193	5,331,948	5,905,141	9.7
2010	571,753	4,723,113	5,294,866	10.8
2009	554,590	4,821,939	5,376,529	10.3
2008	582,440	5,067,152	5,649,592	10.3
2007	614,441	5,564,067	6,178,508	9.9
2006	755,461	5,176,368	5,931,829	12.7
2005	1,112,587	5,066,553	6,179,140	18.0
2004	1,358,417	5,136,236	6,494,653	20.9

Source : Ministry of Economy, Trade and Industry (METI) Current Production Statistics Survey
(Before 2017 figure is revised)
Ministry of Finance Japan (MOF) Trade Statistics of Japan,
Japan Bicycle Promotion Institute Processing and Analysis

Chart S is the graphic presentation of this history.

Chart S Fifteen-year history of Six-Month YTD domestic bicycle unit volume (units)
("Electric power assist bicycles" is included in unit production;
"Motorcycles with electric motor for propulsion" is not included in unit import)



Source : Ministry of Economy, Trade and Industry (METI) Current Production Statistics Survey
(Before 2017 figure is revised)
Ministry of Finance Japan (MOF) Trade Statistics of Japan,
Japan Bicycle Promotion Institute Processing and Analysis

5. Japanese bicycle export

Almost all the Japanese bicycle export is used bicycle export to developing countries. Table 21 shows main destination countries and areas of Japanese bicycle export in June 2018.

Average FOB unit value clearly proves that the bicycle export is used bicycle export. In this part of the report, “Motorcycles with electric motor for propulsion” is excluded.

Table 21 June 2018 Japanese bicycle export by destination countries and areas

Destination country/area	Total units	Total FOB value (JPY thousand)	Average FOB unit value (JPY)
Myanmar	57,020	75,946	1,332
Ghana	50,799	76,093	1,498
Cambodia	37,609	69,088	1,837
Tanzania	32,441	58,336	1,798
Afghanistan	31,608	49,558	1,568
Iraq	17,807	30,755	1,727
UAE	12,521	20,410	1,630
Nigeria	12,469	25,465	2,042
Philippines	11,666	18,279	1,567
Uganda	3,551	5,677	1,599
Others	20,047	38,965	1,944
Total	287,538	468,572	1,630

Source : Ministry of Finance Japan (MOF) Trade Statistics of Japan,
Japan Bicycle Promotion Institute Processing and Analysis

Table 22 shows a fifteen-year history of six-month year to date Japanese bicycle export from 2004 to 2018. Total units are the sixth largest and total value is the fourth highest in the last fifteen years. The average unit value in six-month year to date 2018 is JPY 1,653, the fourth highest in the last fifteen years.

Table 22 Fifteen-year history of Six-Month Year to Date Japanese bicycle export:
All categories

6-month YTD	Total units	Total FOB value (JPY thousand)	Average FOB unit value (JPY)
2018	1,534,641	2,536,824	1,653
2017	1,609,644	2,560,378	1,591
2016	1,624,697	2,920,967	1,798
2015	1,741,447	3,105,750	1,783
2014	1,598,330	2,385,563	1,493
2013	1,560,970	2,090,763	1,339
2012	1,472,001	1,919,884	1,304
2011	1,229,534	1,612,630	1,312
2010	1,183,762	1,585,455	1,339
2009	1,086,363	1,498,350	1,379
2008	1,154,173	1,923,095	1,666
2007	866,620	1,118,874	1,291
2006	643,714	698,402	1,085
2005	548,346	628,453	1,146
2004	481,314	613,121	1,274

Source : Ministry of Finance Japan (MOF) Trade Statistics of Japan,
Japan Bicycle Promotion Institute Processing and Analysis