

Japanese bicycle production, import and export (Three-Month Year to Date 2019)

1. Preface

The purpose of this report is to show the Japanese bicycle market trend through comprehensive investigation of the Japanese bicycle production, import and export. First, the production of the domestic bicycle manufacturers will be clarified using Ministry of Economy, Trade and Industry (METI) Current Production Statistics, and total production activities including shipment, inventories and time series trend will be explained. Second, due to the current big share of import bicycles in the Japanese bicycle market, bicycle import will be investigated by categories and by time series using Ministry of Finance Japan (MOF) Trade Statistics, and general bicycle market trend will be grasped. Then, comprehensive Japanese bicycle market trend including bicycle production becomes clear. Finally, Japanese bicycle export which is now mostly used bicycle export will be briefly referenced.

During the three-month Year to Date 2019, total unit production slightly decreases when compared to the same period of the previous year; however, total value production increased compared to the same period of 2018. As to import, both total unit and value decrease when compared to the same period of 2018, and total unit import is the lowest in the last fifteen years. As a result, the three-month YTD 2019 domestic unit volume which consists of production units and import units is also the lowest in the last fifteen years.

2. Japanese bicycle production

2 – 1 Outline of three-month year to date 2019 bicycle production

According to Ministry of Economy, Trade and Industry (METI) Current Production Statistics Survey, Japanese complete bicycle production in three-month year to date 2019 is 256,264 units, and JPY 16,748,718 thousand. Table 1 shows that total unit production decreases 0.6%, and total production value increases 4.5%, compared to the same period of the previous year. Average production unit value in three-month year to date 2019 is up 5.1% from JPY 62,165 in 2018 to JPY 65,357 in 2019.

Table 1 Three-Month Year to Date 2019 Japanese bicycle production

	Total Units	Total Production Value (JPY thousand)	Average Unit Value (JPY)
3-month YTD 2019	256,264	16,748,718	65,357
3-month YTD 2018	257,826	16,027,649	62,165
Variance	-1,562	721,069	3,193
Variance%	-0.6%	4.5%	5.1%

Source : Ministry of Economy, Trade and Industry (METI) Current Production Statistics Survey
(2018 figure is revised) Japan Bicycle Promotion Institute Processing and Analysis
Due to round off, Total may not match.

Table 2 shows the detail by product category of Japanese bicycle production during the three-month year to date 2019 compared to the same period of 2018.

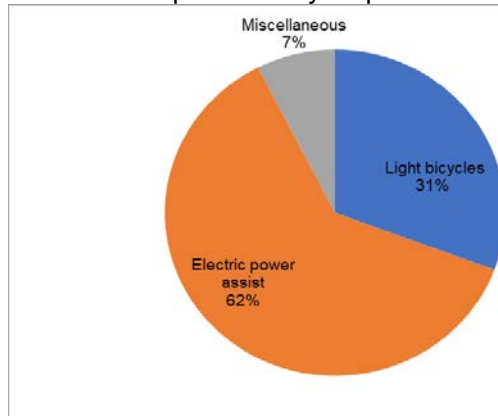
Table 2 Production by category:
Three-Month Year to Date 2019 compared to Three-Month Year to Date 2018

3-month YTD Category	2019		2018		Variance			
	units	Value (JPY thousand)	units	Value (JPY thousand)	units	%	Value (JPY thousand)	%
Light bicycles	78,625	2,488,955	79,023	2,527,145	-398	-0.5	-38,190	-1.5
Electric power assist	158,472	13,858,347	161,463	13,110,852	-2,991	-1.9	747,495	5.7
Miscellaneous	19,167	401,416	17,340	389,652	1,827	10.5	11,764	3.0
Total	256,264	16,748,718	257,826	16,027,649	-1,562	-0.6	721,069	4.5

Source : Ministry of Economy, Trade and Industry (METI) Current Production Statistics Survey
(2018 figure is revised) Japan Bicycle Promotion Institute Processing and Analysis
Due to round off, Total may not match.

Chart A shows a graphic presentation of three-month year to date 2019 Japanese bicycle unit production share by category based on Table 2. “Electric power assist” captures 62% share, and “Light bicycles” follows capturing 31% share.

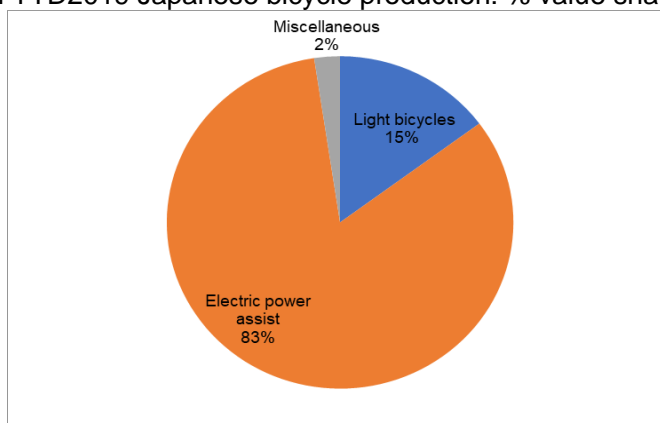
Chart A
Three-Month YTD2019 Japanese bicycle production: % unit share by category



Source : Ministry of Economy, Trade and Industry (METI) Current Production Statistics Survey,
Japan Bicycle Promotion Institute Processing and Analysis

Chart B shows a graphic presentation of three-month year to date 2019 Japanese bicycle production value share by category also based on Table 2. “Electric power assist” captures 83% share.

Chart B
Three-Month YTD2019 Japanese bicycle production: % value share by category



Source : Ministry of Economy, Trade and Industry (METI) Current Production Statistics Survey, Japan Bicycle Promotion Institute Processing and Analysis

Table 3 shows average production unit value by product category in three-month year to date 2019 compared to the same period of 2018. “Electric power assist” goes up, on the other hand, “Light bicycles” and “Miscellaneous” show down.

Table 3 Average Unit Value by product category:
Three-Month Year to Date 2019 compared to Three-Month Year to Date 2018

Category	Average Unit Value (JPY) 3-month YTD 2019	Average Unit Value (JPY) 3-month YTD 2018	Variance (JPY)	Variance (%)
Light bicycles	31,656	31,980	-324	-1.0
Electric power assist	87,450	81,200	6,249	7.7
Miscellaneous	20,943	22,471	-1,528	-6.8
Total	65,357	62,165	3,193	5.1

Source : Ministry of Economy, Trade and Industry (METI) Current Production Statistics Survey (2018 figure is revised) Japan Bicycle Promotion Institute Processing and Analysis
Due to round off, Total may not match.

Table 4 shows unit production, production value and average unit value of “Electric power assist bicycles” by month. Unit production shows decrease when compared to the same period of the previous year; on the other hand, production value shows increase when compared to the same period of 2018.

Table 4
Production of “Electric power assist bicycles” by month: 2019 compared to 2018

	2019			2018			Variance of unit production	Variance of production value (JPY thousand)	Variance of average unit value (JPY)
	Unit production	Production value (JPY thousand)	Average unit value (JPY)	Unit production	Production value (JPY thousand)	Average unit value (JPY)			
January	45,893	4,149,189	90,410	46,507	3,774,633	81,163	-614	374,556	9,247
February	52,707	4,741,124	89,952	54,734	4,613,710	84,293	-2,027	127,414	5,659
March	59,872	4,968,034	82,978	60,222	4,722,509	78,418	-350	245,525	4,559
YTD	158,472	13,858,347	87,450	161,463	13,110,852	81,200	-2,991	747,495	6,249

Source : Ministry of Economy, Trade and Industry (METI) Current Production Statistics Survey (2018 figure is revised) Japan Bicycle Promotion Institute Processing and Analysis
Due to round off, Total may not match.

2 – 2 Comprehensive production, shipments and inventory status of the Japanese bicycle manufacturers

Table 5 shows comprehensive manufacturing and sales condition including production, receipts, shipments (sales and others) and month end inventory in three-month year to date 2019 compared to the same period of 2018.

Table 5 Production, shipments and inventory of the Japanese bicycle manufacturers: Three-Month Year to Date 2019 compared to Three-Month Year to Date 2018

Category	Production		Receipts (Units)	Shipments			March end Inventory (Units)
	Units	Value (JPY thousand)		Sales		Others (Units)	
			Units	Value (JPY thousand)			
3-month YTD 2019 Light bicycles	78,625	2,488,955	186,198	188,127	3,568,872	101,442	29,268
3-month YTD 2018 Light bicycles	79,023	2,527,145	173,457	187,767	3,710,320	83,042	44,670
Variance %	-0.5	-1.5	7.3	0.2	-3.8	22.2	-34.5
3-month YTD 2019 Electric power assist	158,472	13,858,347	133,184	200,222	16,874,594	103,529	56,813
3-month YTD 2018 Electric power assist	161,463	13,110,852	131,172	190,985	15,557,685	102,326	47,792
Variance %	-1.9	5.7	1.5	4.8	8.5	1.2	18.9
3-month YTD 2019 Miscellaneous	19,167	401,416	71,401	77,807	1,636,740	4,296	61,968
3-month YTD 2018 Miscellaneous	17,340	389,652	71,041	75,012	1,814,421	4,195	47,530
Variance %	10.5	3.0	0.5	3.7	-9.8	2.4	30.4
3-month YTD 2019 Total	256,264	16,748,718	390,783	466,156	22,080,206	209,267	148,049
3-month YTD 2018 Total	257,826	16,027,649	375,670	453,764	21,082,426	189,563	139,992
Variance %	-0.6	4.5	4.0	2.7	4.7	10.4	5.8

Source : Ministry of Economy, Trade and Industry (METI) Current Production Statistics Survey
(2018 figure is revised) Japan Bicycle Promotion Institute Processing and Analysis
Due to round off, Total may not match.

Total receipts units in three-month year to date 2019 increase 4.0% compared to three-month year to date 2018.

Total units of shipments sales in three-month year to date 2019 increase 2.7% compared to that of three-month year to date 2018.

Total value of shipments sales up by 4.7% in three-month year to date 2019 compared to the same period of 2018. “Electric power assist” shows up, but “Light bicycles” and “Miscellaneous” show down.

Total units of shipments others in three-month year to date 2019 increases by 10.4% compared to the same period of 2018. All three categories show increase. Shipments others are principally the commissioned products shipped to the consigners.

Total month end inventory in March 2019 is 148,049 units, 5.8% increase compared to March 2018.

2 – 3 Fifteen-year history of three-month year to date bicycle production

Table 6 shows a fifteen-year history of three-month year to date Japanese bicycle production, shipments and March end inventory from 2005 to 2019.

Table 6 Fifteen-year history of bicycle production and shipments:
Three-Month Year to Date March end inventory by Japanese bicycle manufactures

3-month YTD	Production			Shipments			March end Inventory (Units)
	Units	Value*	Average Unit Value (JPY)	Units	Value*	Average Unit Value (JPY)	
2019	256,264	16,748,718	65,357	466,156	22,080,206	47,367	148,049
2018	257,826	16,027,649	62,165	453,764	21,082,426	46,461	139,992
2017	248,119	14,296,354	57,619	482,364	19,359,039	40,134	132,961
2016	265,325	14,805	55,799	478,691	17,673	36,919	136,945
2015	249,855	12,157	48,656	462,299	15,813	34,205	135,542
2014	278,336	13,390	48,107	580,585	17,708	30,500	128,442
2013	264,751	11,572	43,709	565,284	15,672	27,724	204,761
2012	308,426	12,688	41,138	812,892	18,481	22,735	213,991
2011	283,461	11,345	40,023	890,844	19,097	21,437	143,353
2010	299,871	10,345	34,498	857,346	17,167	20,023	197,543
2009	302,897	9,138	30,169	887,807	16,529	18,618	201,479
2008	324,543	7,698	23,720	1,016,304	15,574	15,324	215,025
2007	338,671	7,117	21,014	1,069,225	14,114	13,200	214,321
2006	435,978	8,134	18,657	1,188,506	14,653	12,329	238,679
2005	633,812	10,486	16,544	1,483,615	17,298	11,659	348,746

Source : Ministry of Economy, Trade and Industry (METI) Current Production Statistics Survey
(Before 2018 figure is revised)

Japan Bicycle Promotion Institute Processing and Analysis

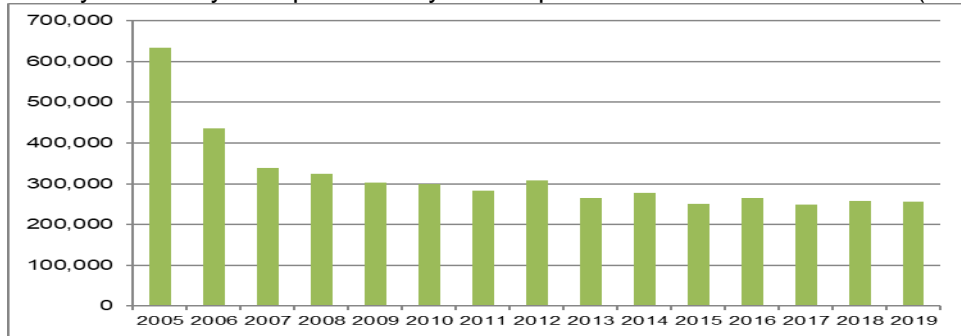
*Before 2016 JPY million, after 2017 JPY thousand

Production units in three-month year to date 2019 are the thirteenth in the last fifteen years. However, production value in this period is the highest. With these facts, the average production unit value is the highest in fifteen years. Also, shipments units in three-month year to date 2019 are the thirteenth in fifteen years, and shipments value in three-month year to date 2019 is the highest, make the average shipments unit value in three-month year to date 2019 the highest. When compared average production unit value to average shipments unit value, average production unit value has been higher than average shipments unit value for fifteen consecutive years. Month end inventory of March 2019 is 148,049 units, ninth in the last fifteen years.

Chart C shows a graphic presentation of this fifteen-year history of Japanese bicycle unit production during the three-month year to date from 2005 to 2019 based on Table 6. Unit production is stagnated.

Chart C

Fifteen-year history of Japanese bicycle unit production: Three-Month YTD (units)

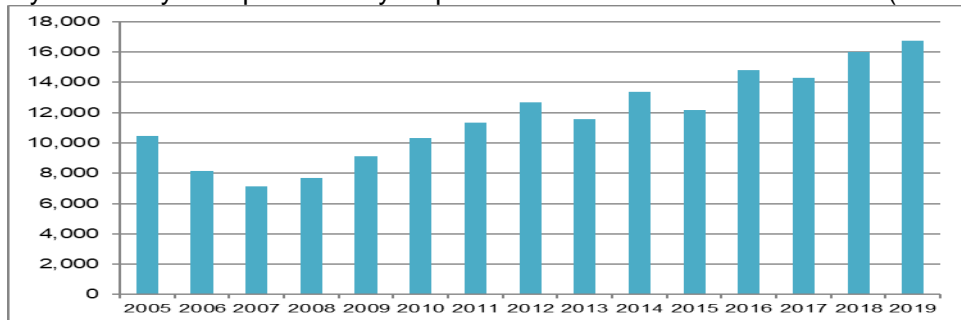


Source : Ministry of Economy, Trade and Industry (METI) Current Production Statistics Survey, Japan Bicycle Promotion Institute Processing and Analysis

Chart D shows a graphic presentation of the fifteen-year history of Japanese bicycle production value during the three-month year to date from 2005 to 2019 also based on Table 6.

Chart D

Fifteen-year history of Japanese bicycle production value: Three-Month YTD (JPY million)

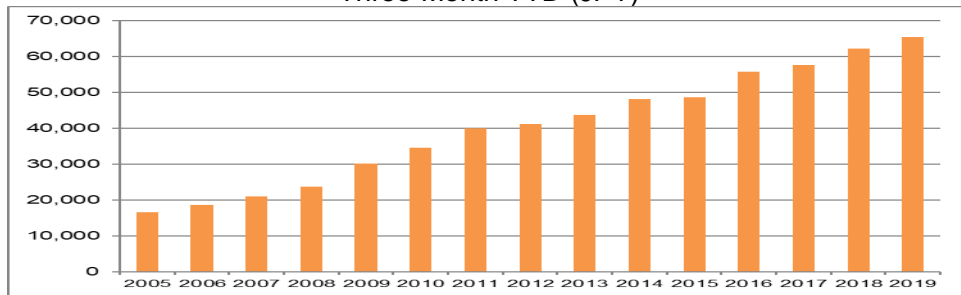


Source : Ministry of Economy, Trade and Industry (METI) Current Production Statistics Survey, Japan Bicycle Promotion Institute Processing and Analysis

Chart E shows a graphic presentation of the fifteen-year history of Japanese bicycle production average unit value during the three-month year to date from 2005 to 2019 also based on Table 6. Production average unit value shows up in trend.

Chart E

Fifteen-year history of Japanese bicycle production average unit value: Three-Month YTD (JPY)



Source : Ministry of Economy, Trade and Industry (METI) Current Production Statistics Survey, Japan Bicycle Promotion Institute Processing and Analysis

Table 7 shows the fifteen-year history of the total unit production by month.

Table 7 Fifteen-year history of total production units by month (units)

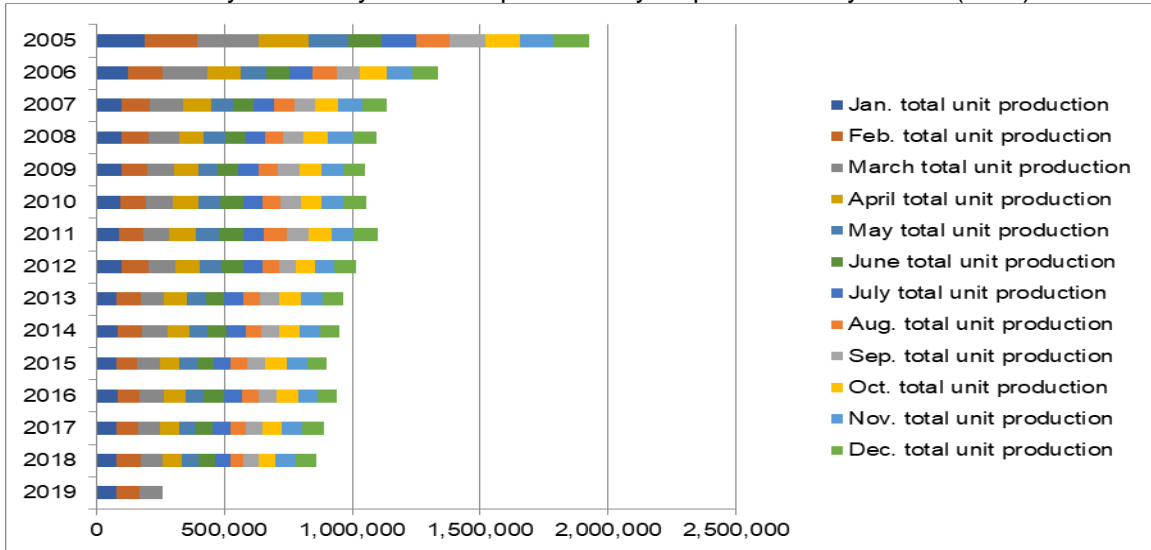
	Jan. total unit production	Feb. total unit production	March total unit production	April total unit production	May total unit production	June total unit production
2019	76,039	91,061	89,164			
2018	78,463	93,312	86,051	76,370	65,715	63,702
2017	79,215	86,276	82,628	74,710	63,706	68,896
2016	82,586	88,069	94,670	81,062	72,186	78,781
2015	78,891	81,242	89,722	75,857	66,218	68,133
2014	84,512	93,408	100,416	83,216	72,121	74,255
2013	79,022	92,667	93,062	88,877	75,906	71,711
2012	96,874	105,350	106,202	95,001	85,528	83,915
2011	86,445	98,081	98,935	107,181	90,542	92,009
2010	93,923	99,424	106,524	98,097	87,516	86,269
2009	96,944	99,314	106,639	94,506	76,287	80,900
2008	97,728	104,912	121,903	96,456	82,921	78,520
2007	99,537	108,413	130,721	108,017	86,039	81,714
2006	124,909	133,470	177,599	128,017	97,944	93,522
2005	186,677	207,574	239,561	197,996	151,547	129,232

	July total unit production	Aug. total unit production	Sep. total unit production	Oct. total unit production	Nov. total unit production	Dec. total unit production	Total unit production
2019							256,264
2018	58,056	53,849	59,194	66,085	77,433	83,025	861,255
2017	66,260	60,279	67,975	74,071	81,506	85,328	890,850
2016	71,533	64,278	71,472	82,749	76,539	75,100	939,025
2015	64,647	62,481	74,354	82,311	79,144	75,095	898,095
2014	74,981	62,167	68,705	81,603	78,727	77,437	951,548
2013	72,325	66,889	74,392	82,781	84,937	83,385	965,954
2012	74,820	65,045	68,721	73,476	73,695	83,687	1,012,314
2011	83,200	86,553	88,460	86,528	87,020	96,712	1,101,666
2010	75,897	72,056	77,555	82,694	86,498	90,498	1,056,951
2009	80,068	76,206	81,360	88,312	85,103	83,830	1,049,469
2008	76,552	70,488	80,661	95,816	98,763	90,212	1,094,932
2007	79,147	79,509	81,679	91,745	93,341	95,744	1,135,606
2006	87,738	94,248	94,359	105,347	99,636	97,723	1,334,512
2005	138,579	130,081	138,979	135,527	132,069	138,614	1,926,436

Source : Ministry of Economy, Trade and Industry (METI) Current Production Statistics Survey, Japan Bicycle Promotion Institute Processing and Analysis (Before 2017 figure is revised)

Chart F shows a graphic presentation of the fifteen-year history of total production units by month based on Table 7. This chart shows that the bicycle production is carried out relatively equally every month.

Chart F
Fifteen-year history of total Japanese bicycle production by month (units)



Source : Ministry of Economy, Trade and Industry (METI) Current Production Statistics Survey, Japan Bicycle Promotion Institute Processing and Analysis

Table 8 shows a fifteen-year history of three-month year to date Japanese bicycle unit production by category.

Table 8 Fifteen-year history of Three-Month Year to Date Japanese bicycle unit production by categories (unit)

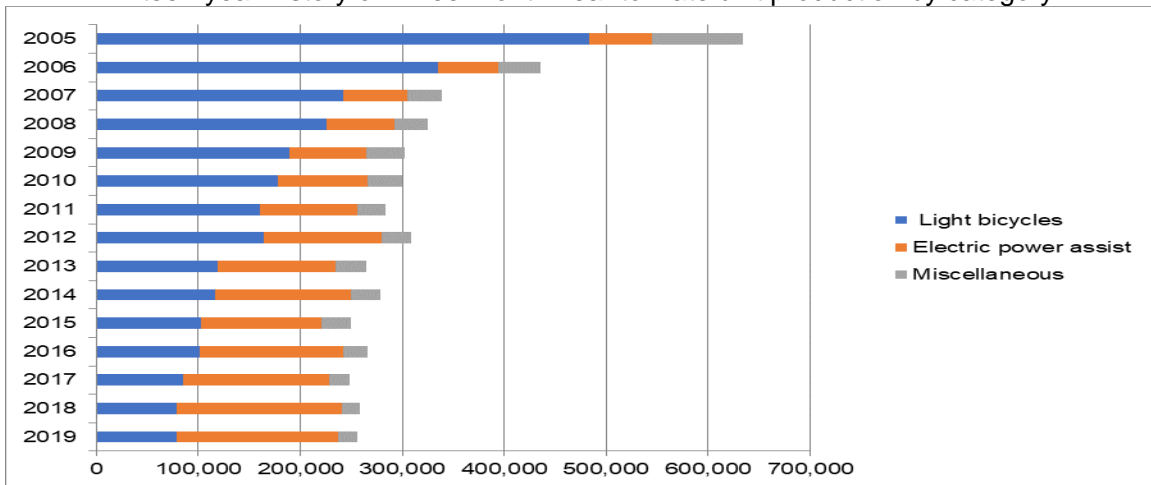
	Light bicycles	Electric power assist	Miscellaneous	Total
2019	78,625	158,472	19,167	256,264
2018	79,023	161,463	17,340	257,826
2017	84,530	143,269	20,320	248,119
2016	101,751	140,426	23,148	265,325
2015	102,324	118,751	28,780	249,855
2014	116,929	132,842	28,565	278,336
2013	118,317	116,175	30,259	264,751
2012	163,515	116,341	28,570	308,426
2011	160,600	95,370	27,491	283,461
2010	178,147	87,177	34,547	299,871
2009	189,774	74,861	38,262	302,897
2008	226,210	66,077	32,256	324,543
2007	242,133	62,966	33,572	338,671
2006	335,501	59,170	41,307	435,978
2005	483,339	61,346	89,127	633,812

From 2011, "Children & Infant bicycles", "Mini-cycles", "Mountain bikes" and "Special bicycles" have been combined into "Miscellaneous". "Miscellaneous" between 2004 and 2010 include these four categories.

Source : Ministry of Economy, Trade and Industry (METI) Current Production Statistics Survey, Japan Bicycle Promotion Institute Processing and Analysis

Chart G shows a graphic presentation of the fifteen-year history of three-month year to date unit production by category based on Table 8. This chart shows that "Light bicycles" are decreasing, and "Electric power assist" is increasing.

Chart G
Fifteen-year history of Three-Month Year to Date unit production by category



Source : Ministry of Economy, Trade and Industry (METI) Current Production Statistics Survey, Japan Bicycle Promotion Institute Processing and Analysis

3. Japanese bicycle import

Bicycle import by category is mentioned below. To begin with, import categories and HS numbers in Japan are classified as follows. “Electric power assist bicycles” is not classified as a single category and considered to be included in the category of “Motorcycles with electric motor for propulsion” in Trade Statistics. Please note that “Motorcycles with electric motor for propulsion” includes all electric motorcycles.

Table 9 Import categories and HS numbers

HS number and product category	Bicycle type
8712.00100 Mountain bikes	<ul style="list-style-type: none"> • MTB(includes V brake or disk brake equipped) • Cross bikes
8712.00211 Mini-cycles	<ul style="list-style-type: none"> • Mini-cycles • Small wheel foldable bicycles • BMX
8712.00218 Infant bicycles	<ul style="list-style-type: none"> • Infant bicycles(12 – 16 inch) • Toy bicycles(12 inch two wheel) • Unicycles(12 – 16 inch)
8712.00219 Children bicycles	<ul style="list-style-type: none"> • Children bicycles(18 – 24 inch) • Junior MTB(18 – 24 inch) • Unicycles(18 – 24 inch)
8712.00291 Light bicycles	<ul style="list-style-type: none"> • Light bicycles(excludes outer derailleur equipped) • Single speed, sports use bicycles equipped with inner derailleur.
8712.00299 Miscellaneous	<ul style="list-style-type: none"> • Sports use bicycles • Light bicycles equipped with outer derailleur • Junior MTB(26 inch)
8711.60000 Motorcycles with electric motor for propulsion	<ul style="list-style-type: none"> • Electric motor cycles and electric power assist bicycles considered to be included.

Source : Japan Bicycle Promotion Institute

3 – 1 Outline of three-month year to date 2019 bicycle import

Table 10 shows Japanese bicycle import of all product categories excluding “Motorcycles with electric motor for propulsion” in three-month year to date 2019 compared to the same period of 2018. Unit total is 1,840,057, 5.2% decrease compared to the same period of 2018. On the other hand, total CIF value is JPY21,075,532 thousands, decreases by 9.8% compared to the same period of 2018, resulted in average CIF unit value of JPY11,454, 4.8% decrease.

The currency exchange rate is investigated. The average dollar-yen exchange rate during three-month year to date 2018 was US\$1=JPY109.44; however, it gets US\$1=JPY110.11 in three-month year to date 2019(Refer chief custom inspector published rate).

Table 10 Japanese bicycle import:
Three-Month Year to Date 2019 compared to Three-Month Year to Date 2018
 (“Motorcycles with electric motor for propulsion” is not included)

	Total units	Total CIF Value (JPY thousand)	Average CIF unit value (JPY)
3-month YTD 2019	1,840,057	21,075,532	11,454
3-month YTD 2018	1,941,518	23,354,208	12,029
Variance	-101,461	-2,278,676	-575
Variance %	-5.2	-9.8	-4.8

Source : Ministry of Finance Japan (MOF) Trade Statistics of Japan,
Japan Bicycle Promotion Institute Processing and Analysis

Table 10 Annex shows three-month year to date 2019 import of “Motorcycles with electric motor for propulsion” compared to the same period of 2018 for reference. Both unit and value show great increase.

Table 10 Annex (Reference) Japanese import of “Motorcycles with electric motor for
propulsion”

Three-Month Year to Date 2019 compared to Three-Month Year to Date 2018

	Total units	Total CIF Value (JPY thousand)	Average CIF unit value (JPY)
3-month YTD 2019	83,382	3,284,995	39,397
3-month YTD 2018	68,868	2,644,791	38,404
Variance	14,514	640,204	993
Variance %	21.1	24.2	2.6

Source : Ministry of Finance Japan (MOF) Trade Statistics of Japan,
Japan Bicycle Promotion Institute Processing and Analysis

3 – 2 Three-month year to date 2019 bicycle import by category

Table 11 shows three-month year to date 2019 Japanese bicycle import by category.

Table 11
Japanese bicycle imports in Three-Month Year to Date 2019 by category

HS number and category	Total units	Total CIF Value (JPY thousand)	Average CIF unit value (JPY)
8712.00100 Mountain bikes	42,245	776,024	18,370
8712.00211 Mini-cycles	70,550	872,998	12,374
8712.00218 Infant bicycles	84,077	620,469	7,380
8712.00219 Children bicycles	359,298	3,366,519	9,370
8712.00291 Light bicycles	573,283	5,702,659	9,947
8712.00299 Miscellaneous	710,604	9,736,863	13,702
Total	1,840,057	21,075,532	11,454

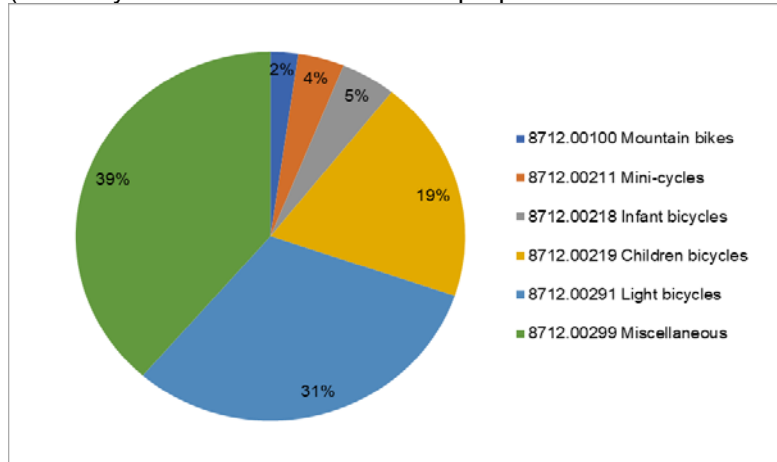
8711.60000 Motorcycles with electric motor for propulsion	83,382	3,284,995	39,397
---	--------	-----------	--------

Source : Ministry of Finance Japan (MOF) Trade Statistics of Japan,
Japan Bicycle Promotion Institute Processing and Analysis

The average CIF unit value of HS8712.00100 “Mountain bikes” is JPY 18,370, the highest among the categories except for “Motorcycles with electric motor for propulsion”. The average CIF unit value of HS8712.00291 “Light bicycles” is JPY9,947, and its unit volume is the second biggest, following HS8712.00299 “Miscellaneous” which includes sports use bicycles and light bicycles equipped with outer derailleurs. The unit volume and total CIF value of HS8712.00299 “Miscellaneous” are the highest among the categories. Its average CIF unit value is JPY 13,702.

Chart H shows a graphic presentation of three-month year to date 2019 Japanese bicycle import unit share by category based on Table 11. “Miscellaneous” captures 39% share and “Light bicycles” captures 31% share as well.

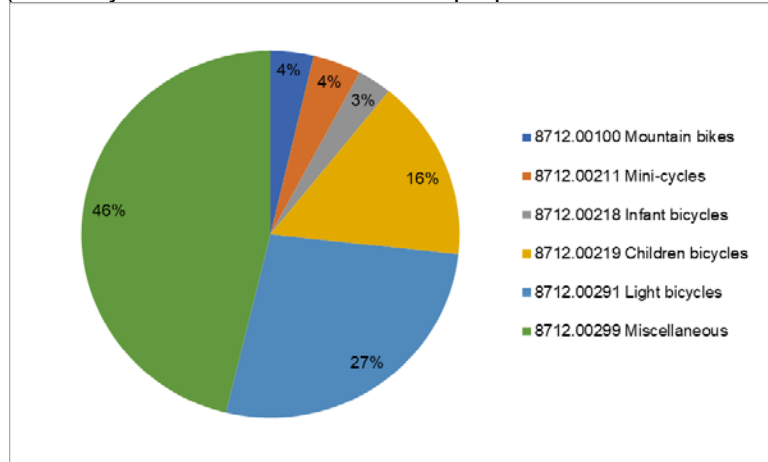
Chart H
Three-Month YTD2019 Japanese bicycle import: Unit share by category
(“Motorcycles with electric motor for propulsion” is not included)



Source : Ministry of Finance Japan (MOF) Trade Statistics of Japan,
Japan Bicycle Promotion Institute Processing and Analysis

Chart I shows a graphic presentation of three-month year to date 2019 Japanese bicycle import value share by category also based on Table 11. “Miscellaneous” captures 46% and “Light bicycles” captures 27% share.

Chart I
Three-Month YTD2019 Japanese bicycle import: Value share by category
("Motorcycles with electric motor for propulsion" is not included)



Source : Ministry of Finance Japan (MOF) Trade Statistics of Japan,
Japan Bicycle Promotion Institute Processing and Analysis

Table 12 shows a three-month year to date 2019 Japanese bicycle import by category compared to the same period of the previous year. "Mountain bikes", "Infant bicycles", "Children bicycles", "Light bicycles" and "Miscellaneous" show decrease in both unit and value. On the other hand, "Mini-cycles" shows increase both in unit and value. Bicycle import for bike share may be reflected in this category.

Table 12 Three-Month Year to Date 2019 Japanese bicycle import by category compared to Three-Month Year to Date 2018

3-month YTD Category	2019		2018		Variance %	
	units	Total CIF value (JPY thousand)	units	Total CIF value (JPY thousand)	Units	CIF value
8712.00100 Mountain bikes	42,245	776,024	42,334	797,485	-0.2%	-2.7%
8712.00211 Mini-cycles	70,550	872,998	69,422	792,437	1.6%	10.2%
8712.00218 Infant bicycles	84,077	620,469	103,764	855,643	-19.0%	-27.5%
8712.00219 Children bicycles	359,298	3,366,519	362,414	3,451,333	-0.9%	-2.5%
8712.00291 Light bicycles	573,283	5,702,659	611,071	6,269,696	-6.2%	-9.0%
8712.00299 Miscellaneous	710,604	9,736,863	752,513	11,187,614	-5.6%	-13.0%
Total	1,840,057	21,075,532	1,941,518	23,354,208	-5.2%	-9.8%
Average unit value (JPY)		11,454		12,029		-4.8%

8711.60000 Motorcycles with electric motor for propulsion	83,382	3,284,995	68,868	2,644,791	21.1%	24.2%
Average unit value (JPY)		39,397		38,404		2.6%

Source : Ministry of Finance Japan (MOF) Trade Statistics of Japan,
Japan Bicycle Promotion Institute Processing and Analysis

3 – 3 Fifteen year history of three-month year to date bicycle import

Table 13 shows a fifteen-year history of three-month year to date Japanese bicycle import.

Table 13 Fifteen-year history of Three-Month Year to Date Japanese bicycle import:
All categories (“Motorcycles with electric motor for propulsion” is not included)

3-month YTD	Total import units	Total CIF value (JPY thousand)	Average CIF unit value (JPY)
2019	1,840,057	21,075,532	11,454
2018	1,941,518	23,354,208	12,029
2017	2,152,214	23,631,080	10,980
2016	2,299,150	27,404,625	11,919
2015	2,277,256	30,021,500	13,183
2014	2,626,492	28,479,177	10,843
2013	2,373,370	23,483,404	9,895
2012	2,695,555	22,695,025	8,419
2011	2,580,156	20,269,931	7,856
2010	2,428,569	19,462,552	8,014
2009	2,576,224	22,705,053	8,813
2008	2,684,045	22,666,563	8,445
2007	2,877,065	23,273,025	8,089
2006	2,670,732	19,943,370	7,467
2005	2,563,991	16,336,547	6,372

Source : Ministry of Finance Japan (MOF) Trade Statistics of Japan,
Japan Bicycle Promotion Institute Processing and Analysis

Total unit import in three-month year to date 2019 is the lowest in the last fifteen years. On the other hand, total CIF value in three-month year to date 2019 is the eleventh in this history; make the average CIF unit value JPY 11,454, the fourth highest in this period.

Chart J shows the fifteen-year history of three-month year to date total import units based on Table 13.

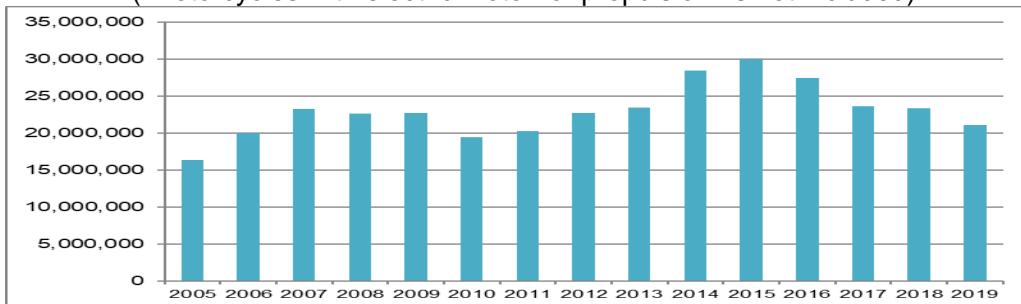
Chart J
Fifteen-year history of Three-Month YTD total Japanese bicycle unit import (units)
("Motorcycles with electric motor for propulsion" is not included)



Source : Ministry of Finance Japan (MOF) Trade Statistics of Japan,
Japan Bicycle Promotion Institute Processing and Analysis

Chart K shows the fifteen-year history of three-month year to date total import CIF value also based on Table 13.

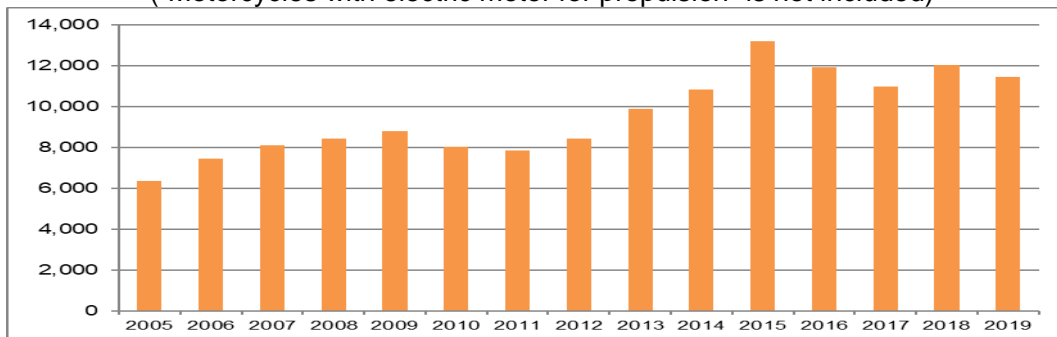
Chart K Fifteen year history of Three-Month YTD total Japanese bicycle import CIF value
(JPY thousand)
("Motorcycles with electric motor for propulsion" is not included)



Source : Ministry of Finance Japan (MOF) Trade Statistics of Japan,
Japan Bicycle Promotion Institute Processing and Analysis

Chart L shows the fifteen-year history of three-month year to date average CIF unit import value also based on Table 13.

Chart L Fifteen year history of Three-Month YTD Japanese bicycle average
CIFunit import value (JPY)
("Motorcycles with electric motor for propulsion" is not included)



Source : Ministry of Finance Japan (MOF) Trade Statistics of Japan,
Japan Bicycle Promotion Institute Processing and Analysis

Table 14 shows the total unit import by month.

Table 14 Fifteen year history of total import units by month:
 (“Motorcycles with electric motor for propulsion” is not included)

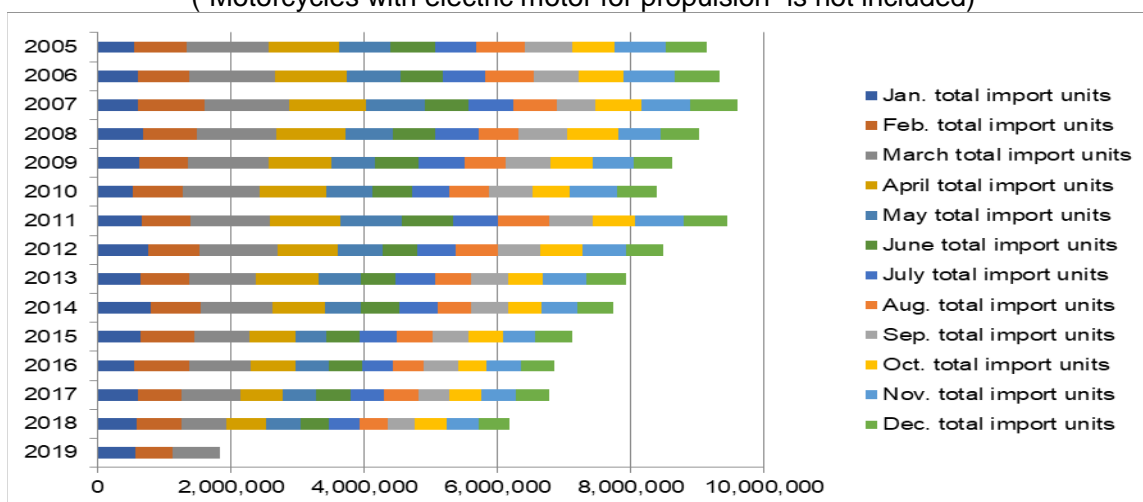
	January total import units	February total import units	March total import units	April total import units	May total import units	June total import units
2019	561,860	557,809	720,388			
2018	584,582	672,121	684,815	588,526	515,094	434,024
2017	608,232	654,624	889,358	634,082	499,298	505,257
2016	559,379	823,009	916,762	673,000	493,419	507,531
2015	639,107	809,453	828,696	690,064	462,606	510,639
2014	800,012	758,904	1,067,576	783,049	546,090	581,432
2013	646,439	729,345	997,586	949,665	634,542	514,285
2012	759,838	779,645	1,156,072	904,565	672,252	525,908
2011	661,234	725,936	1,192,986	1,067,890	915,243	768,659
2010	529,116	759,113	1,140,340	1,002,806	691,515	600,223
2009	631,533	717,828	1,226,863	932,220	660,802	652,693
2008	679,048	809,921	1,195,076	1,041,042	718,439	623,626
2007	613,892	988,006	1,275,167	1,152,734	890,124	644,144
2006	602,545	765,063	1,303,124	1,075,231	796,610	633,795
2005	541,343	796,348	1,226,300	1,056,187	777,336	669,039

	July total import units	Aug. total import units	Sep. total import units	Oct. total import units	Nov. total import units	Dec. total import units	YTD total import units
2019							1,840,057
2018	452,637	430,168	393,334	481,847	479,022	465,912	6,182,082
2017	511,094	522,474	454,877	480,920	514,237	503,346	6,777,799
2016	460,740	464,093	509,475	438,628	518,622	484,729	6,849,387
2015	556,279	542,763	524,133	519,919	484,170	554,615	7,122,444
2014	572,129	504,218	543,409	502,832	540,165	534,548	7,734,364
2013	595,336	535,046	561,806	528,767	640,332	599,246	7,932,395
2012	586,024	629,284	631,719	642,217	649,625	562,295	8,499,444
2011	675,783	776,045	655,654	629,958	722,052	659,152	9,450,592
2010	562,581	582,646	663,734	546,459	719,973	603,440	8,401,946
2009	685,910	619,872	677,716	623,646	620,796	571,838	8,621,717
2008	646,395	612,531	729,659	770,349	625,626	582,061	9,033,773
2007	672,070	649,954	586,098	688,807	741,855	700,463	9,603,314
2006	643,767	724,797	673,445	684,487	767,415	668,893	9,339,172
2005	626,723	720,123	708,659	631,378	780,371	610,012	9,143,819

Source : Ministry of Finance Japan (MOF) Trade Statistics of Japan,
 Japan Bicycle Promotion Institute Processing and Analysis

Chart M shows a graphic presentation of the fifteen-year history of total import units by month based on Table 14.

Chart M Fifteen year history of total Japanese bicycle import by month (units)
 (“Motorcycles with electric motor for propulsion” is not included)



Source : Ministry of Finance Japan (MOF) Trade Statistics of Japan,
 Japan Bicycle Promotion Institute Processing and Analysis

Table 15 shows a fifteen-year history of three-month year to date Japanese bicycle unit import by category.

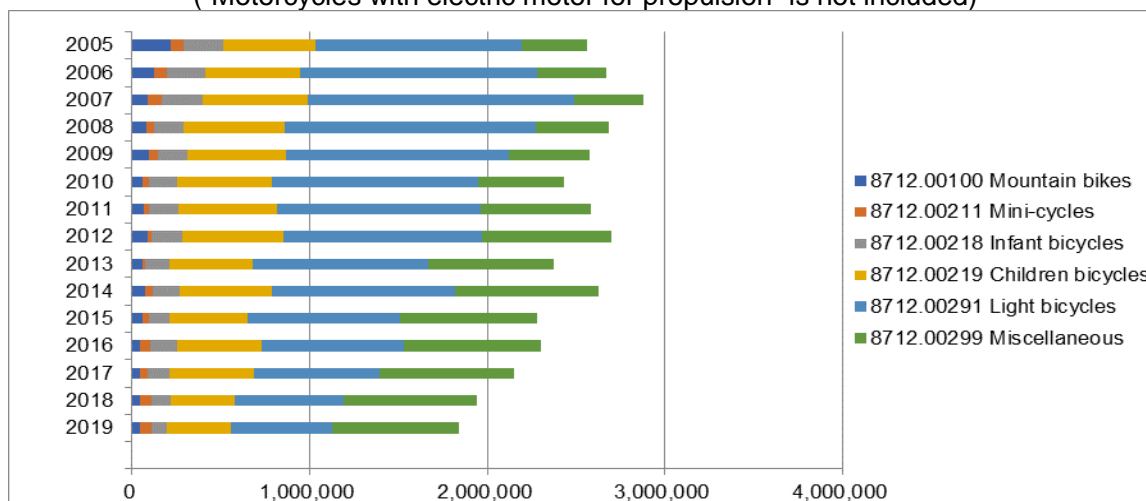
Table 15
 Fifteen-year history of Three-Month Year to Date Japanese bicycle unit import
 by categories (“Motorcycles with electric motor for propulsion” is not included)

	8712.00100 Mountain bikes	8712.00211 Mini-cycles	8712.00218 Infant bicycles	8712.00219 Children bicycles	8712.00291 Light bicycles	8712.00299 Miscellaneous	Total
2019	42,245	70,550	84,077	359,298	573,283	710,604	1,840,057
2018	42,334	69,422	103,764	362,414	611,071	752,513	1,941,518
2017	41,043	48,250	123,580	471,346	709,321	758,674	2,152,214
2016	46,036	53,357	152,269	479,142	799,569	768,777	2,299,150
2015	57,459	36,331	115,495	441,698	857,838	768,435	2,277,256
2014	73,179	40,807	152,613	522,810	1,029,951	807,132	2,626,492
2013	57,955	18,262	131,559	474,305	982,149	709,140	2,373,370
2012	87,062	24,657	171,652	565,515	1,119,749	726,920	2,695,555
2011	63,603	33,548	164,291	551,849	1,150,866	615,999	2,580,156
2010	59,489	38,452	156,636	530,318	1,160,841	482,833	2,428,569
2009	97,986	50,097	165,108	551,110	1,258,515	453,408	2,576,224
2008	78,379	47,352	167,448	563,993	1,416,437	410,436	2,684,045
2007	88,125	75,520	231,083	591,808	1,503,365	387,164	2,877,065
2006	121,249	75,377	215,316	537,198	1,334,396	387,196	2,670,732
2005	219,677	72,011	219,366	518,450	1,166,989	367,498	2,563,991

Source : Ministry of Finance Japan (MOF) Trade Statistics of Japan,
 Japan Bicycle Promotion Institute Processing and Analysis

Chart N shows these import histories.

Chart N
Fifteen-year history of Three-Month YTD Japanese bicycle unit import by category (units)
("Motorcycles with electric motor for propulsion" is not included)



Source : Ministry of Finance Japan (MOF) Trade Statistics of Japan,
Japan Bicycle Promotion Institute Processing and Analysis

3 – 4 Main source country/area of Japanese bicycle import

Table 16 shows source countries and areas of three-month year to date 2019 Japanese bicycle import.

Table 16 Main source countries and areas of
Japanese bicycle imports in Three-Month Year to Date 2019
("Motorcycles with electric motor for propulsion" is not included)

Source country/area	Total units	% share of total units	Total CIF Value (JPY thousand)	% share of total value	Average CIF unit value (JPY)
China	1,802,684	98.0	18,876,340	89.6	10,471
Taiwan	33,885	1.8	1,853,444	8.8	54,698
Others	3,488	0.2	345,748	1.6	99,125
Total	1,840,057	100.0	21,075,532	100.0	11,454

Source : Ministry of Finance Japan (MOF) Trade Statistics of Japan,
Japan Bicycle Promotion Institute Processing and Analysis Due to round off, Total may not match.

"China" continues to be the biggest source country. It captures 98.0% of total units, and 89.6% of total CIF value. The average CIF unit value is JPY 10,471. "Taiwan" follows "China", capturing 1.8% of total units, and 8.8% of total CIF value. The average CIF unit value is JPY 54,698. These two-combined captures 99.8% of total units and 98.4% of total CIF value.

Table 17 shows Japanese bicycle import from "China" by category.

Table 17 Japanese bicycle import from “China” in Three-Month Year to Date 2019 by category (“Motorcycles with electric motor for propulsion” is not included)

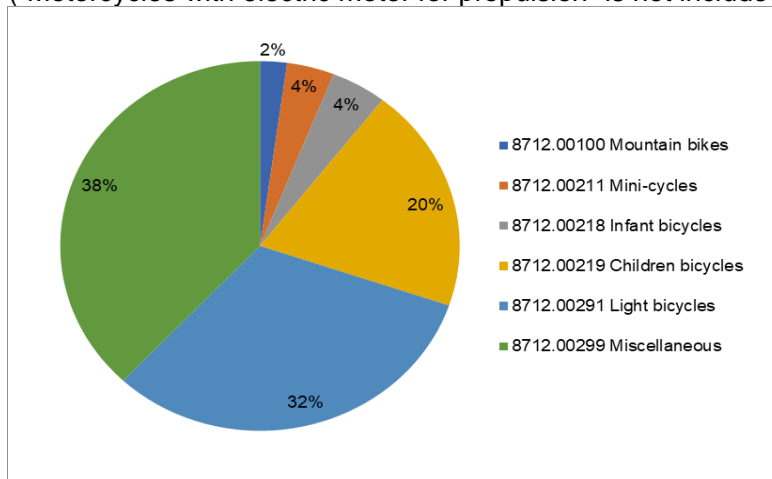
HS number and category	Total units	Total CIF Value (JPY thousand)	Average CIF unit value (JPY)
8712.00100 Mountain bikes	39,290	636,246	16,194
8712.00211 Mini-cycles	68,935	815,531	11,830
8712.00218 Infant bicycles	81,338	547,055	6,726
8712.00219 Children bicycles	355,263	3,276,153	9,222
8712.00291 Light bicycles	572,868	5,687,419	9,928
8712.00299 Miscellaneous	684,990	7,913,936	11,553
Total	1,802,684	18,876,340	10,471

Source : Ministry of Finance Japan (MOF) Trade Statistics of Japan, Japan Bicycle Promotion Institute Processing and Analysis

Chart O shows a graphic presentation of three-month year to date 2019 Japanese bicycle import unit share from “China” by category based on Table 17. “Miscellaneous” captures 38% share and “Light bicycles” follows to capture 32% share. Unit import volume from “China” is so huge; therefore, this chart looks like Chart H which shows Japanese total unit import share by category.

Chart O Three-Month YTD2019 Japanese bicycle import from “China”: Unit share by category

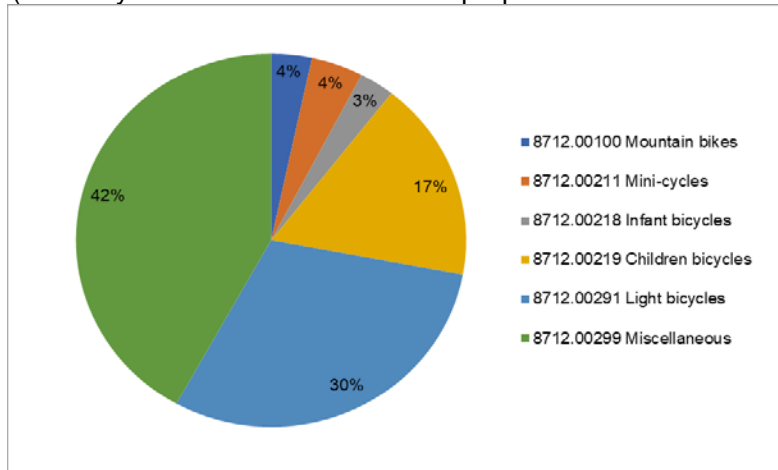
(“Motorcycles with electric motor for propulsion” is not included)



Source : Ministry of Finance Japan (MOF) Trade Statistics of Japan, Japan Bicycle Promotion Institute Processing and Analysis

Chart P shows a graphic presentation of three-month year to date 2019 Japanese bicycle import value share from “China” by category also based on Table 17. “Miscellaneous” captures 42% share and “Light bicycles” follows capturing 30% share.

Chart P Three-Month YTD2019 Japanese bicycle import from “China”:
Value share by category
 (“Motorcycles with electric motor for propulsion” is not included)



Source : Ministry of Finance Japan (MOF) Trade Statistics of Japan,
Japan Bicycle Promotion Institute Processing and Analysis

Then, Table 18 follows to show Japanese bicycle import from “Taiwan” by category.

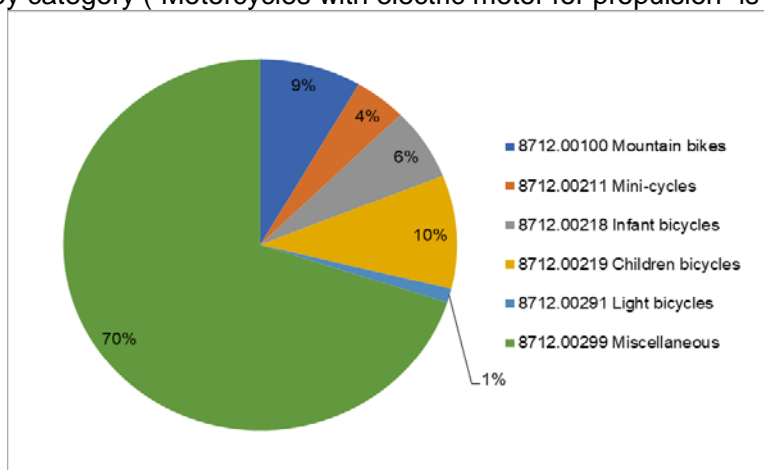
Table 18 Japanese bicycle import from “Taiwan” in Three-Month Year to Date 2019
by category (“Motorcycles with electric motor for propulsion” is not included)

HS number and category	Total units	Total CIF Value (JPY thousand)	Average CIF unit value (JPY)
8712.00100 Mountain bikes	2,829	128,080	45,274
8712.00211 Mini-cycles	1,455	44,343	30,476
8712.00218 Infant bicycles	2,130	11,674	5,481
8712.00219 Children bicycles	3,352	60,415	18,024
8712.00291 Light bicycles	415	15,240	36,723
8712.00299 Miscellaneous	23,704	1,593,692	67,233
Total	33,885	1,853,444	54,698

Source : Ministry of Finance Japan (MOF) Trade Statistics of Japan,
Japan Bicycle Promotion Institute Processing and Analysis

Chart Q shows a graphic presentation of three-month year to date 2019 Japanese bicycle import unit share from “Taiwan” by category based on Table 18. This chart looks totally different from Chart H which shows total import or Chart O which shows import from “China”. “Miscellaneous” captures 70% big share and “Mountain Bikes” follows to capture 9% share. On the other hand, “Light bicycles” only captures 1% share.

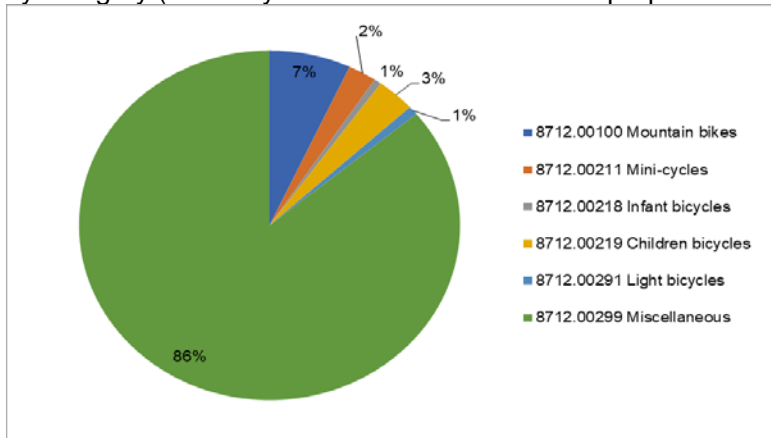
Chart Q Three-Month YTD2019 Japanese bicycle import from “Taiwan”:
Unit share by category (“Motorcycles with electric motor for propulsion” is not included)



Source : Ministry of Finance Japan (MOF) Trade Statistics of Japan,
Japan Bicycle Promotion Institute Processing and Analysis

Moreover, Chart R shows a graphic presentation of three-month year to date 2019 Japanese bicycle import value share from “Taiwan” by category also based on Table 18. The characteristics appear more remarkably than the unit import share. “Miscellaneous” captures 86% share and “Mountain Bikes” follows capturing 7% share. The share of “Light bicycles” is only 1%.

Chart R Three-Month YTD2019 Japanese bicycle import from “Taiwan”:
Value share by category (“Motorcycles with electric motor for propulsion” is not included)



Source : Ministry of Finance Japan (MOF) Trade Statistics of Japan,
Japan Bicycle Promotion Institute Processing and Analysis

Then, Table 19 shows source countries and areas of three-month year to date 2019 Japanese “Motorcycles with electric motor for propulsion” import compared to that of 2018 for reference.

Table 19 (Reference) Main source countries and areas of Japanese
“Motorcycles with electric motor for propulsion” import
in Three-Month Year to Date 2019 compared to 2018

Source country/area	Total units	% share of total units	Total CIF Value (JPY thousand)	% share of total value	Average CIF unit value (JPY)
3-month YTD 2019 China	82,384	98.8	3,086,190	93.9	37,461
3-month YTD 2018 China	68,542	99.5	2,571,848	97.2	37,522
Variance %	13,842	-0.7	514,342	-3.3	-61
3-month YTD 2019 Taiwan	551	0.7	78,445	2.4	142,368
3-month YTD 2018 Taiwan	238	0.3	41,521	1.6	174,458
Variance %	313	0.3	36,924	0.8	-32,090
3-month YTD 2019 Others	447	0.5	120,360	3.7	269,262
3-month YTD 2018 Others	88	0.1	31,422	1.2	357,068
Variance %	359	0.4	88,938	2.5	-87,806
3-month YTD 2019 Total	83,382	100.0	3,284,995	100.0	39,397
3-month YTD 2018 Total	68,868	100.0	2,644,791	100.0	38,404
Variance %	14,514	0.0	640,204	0.0	993

Source : Ministry of Finance Japan (MOF) Trade Statistics of Japan,
Japan Bicycle Promotion Institute Processing and Analysis Due to round off, Total may not match.

4. Domestic unit volume

Almost all the Japanese bicycle export is used bicycle export to developing countries. Therefore, production units plus import units can be defined as domestic unit volume. Table 20 shows a fifteen-year history of Three-Month Year to Date domestic unit volume. Three-Month Year to Date 2019 domestic unit volume is 2,096,321, the lowest in the last fifteen years. And its domestic production ratio is 12.2%.

Table 20 Fifteen-year history of Three-Month Year to Date
Japanese bicycle domestic unit volume
("Electric power assist bicycles" is included in unit production;
"Motorcycles with electric motor for propulsion" is not included in unit import)

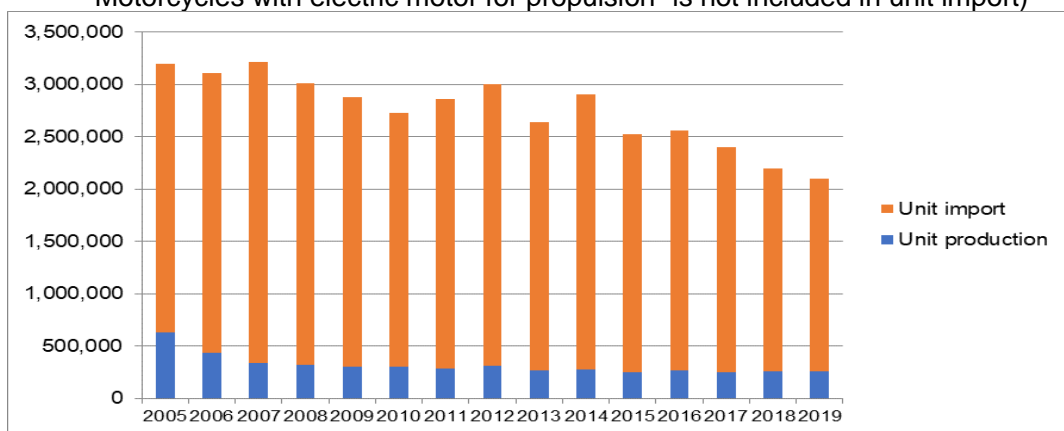
3-month YTD	Unit production	Unit import	Domestic unit volume	Domestic production ratio %
2019	256,264	1,840,057	2,096,321	12.2
2018	257,826	1,941,518	2,199,344	11.7
2017	248,119	2,152,214	2,400,333	10.3
2016	265,325	2,299,150	2,564,475	10.3
2015	249,855	2,277,256	2,527,111	9.9
2014	278,336	2,626,492	2,904,828	9.6
2013	264,751	2,373,370	2,638,121	10.0
2012	308,426	2,695,555	3,003,981	10.3
2011	283,461	2,580,156	2,863,617	9.9
2010	299,871	2,428,569	2,728,440	11.0
2009	302,897	2,576,224	2,879,121	10.5
2008	324,543	2,684,045	3,008,588	10.8
2007	338,671	2,877,065	3,215,736	10.5
2006	435,978	2,670,732	3,106,710	14.0
2005	633,812	2,563,991	3,197,803	19.8

Source : Ministry of Economy, Trade and Industry (METI) Current Production Statistics Survey
(Before 2018 figure is revised)

Ministry of Finance Japan (MOF) Trade Statistics of Japan,
Japan Bicycle Promotion Institute Processing and Analysis

Chart S is the graphic presentation of this history.

Chart S Fifteen-year history of Three-Month YTD domestic bicycle unit volume (units)
 (“Electric power assist bicycles” is included in unit production;
 “Motorcycles with electric motor for propulsion” is not included in unit import)



Source : Ministry of Economy, Trade and Industry (METI) Current Production Statistics Survey
 (Before 2018 figure is revised)

Ministry of Finance Japan (MOF) Trade Statistics of Japan,
 Japan Bicycle Promotion Institute Processing and Analysis

5. Japanese bicycle export

Almost all the Japanese bicycle export is used bicycle export to developing countries. Table 21 shows main destination countries and areas of Japanese bicycle export in Three-Month Year to Date 2019. Average FOB unit value clearly proves that the bicycle export is used bicycle export. In this part of the report, “Motorcycles with electric motor for propulsion” is excluded.

Table 21 Three-Month Year to Date 2019
 Japanese bicycle export by destination countries and areas

Destination country/area	Total units	Total FOB value (JPY thousand)	Average FOB unit value (JPY)
Ghana	158,705	252,360	1,590
Myanmar	150,290	211,867	1,410
Cambodia	98,505	199,890	2,029
Afghanistan	80,677	127,090	1,575
Iraq	52,280	105,536	2,019
Nigeria	42,171	76,370	1,811
Tanzania	32,674	60,716	1,858
UAE	32,355	56,054	1,732
Philippines	23,987	44,825	1,869
Turkey	16,006	28,990	1,811
Others	42,124	98,334	2,334
Total	729,774	1,262,032	1,729

Source : Ministry of Finance Japan (MOF) Trade Statistics of Japan,
 Japan Bicycle Promotion Institute Processing and Analysis

Table 22 shows a fifteen-year history of three-month year to date Japanese bicycle export from 2005 to 2019. In 2019, total units are the fourth largest and total value is the third highest in the last fifteen years. The average unit value in three-month year to date 2019 is JPY 1,729, the third highest in the last fifteen years.

Table 22 Fifteen-year history of Three-Month Year to Date Japanese bicycle export:
All categories

3-month YTD	Total units	Total FOB value (JPY thousand)	Average FOB unit value (JPY)
2019	729,774	1,262,032	1,729
2018	709,484	1,180,597	1,664
2017	757,756	1,214,091	1,602
2016	777,827	1,460,745	1,878
2015	803,736	1,436,202	1,787
2014	729,651	1,075,151	1,474
2013	722,752	939,012	1,299
2012	699,859	901,501	1,288
2011	557,747	743,842	1,334
2010	555,117	745,569	1,343
2009	492,380	673,801	1,368
2008	554,131	928,910	1,676
2007	386,012	467,747	1,212
2006	304,033	323,202	1,063
2005	224,636	256,521	1,142

Source : Ministry of Finance Japan (MOF) Trade Statistics of Japan,
Japan Bicycle Promotion Institute Processing and Analysis

#####