

Japanese bicycle production, import and export (Twelve-Month Year to Date 2018)

1. Preface

The purpose of this report is to show the Japanese bicycle market trend through comprehensive investigation of the Japanese bicycle production, import and export. First, the production of the domestic bicycle manufacturers will be clarified using Ministry of Economy, Trade and Industry (METI) Current Production Statistics, and total production activities including shipment, inventories and time series trend will be explained. Second, due to the current big share of import bicycles in the Japanese bicycle market, bicycle import will be investigated by categories and by time series using Ministry of Finance Japan (MOF) Trade Statistics, and general bicycle market trend will be grasped. Then, comprehensive Japanese bicycle market trend including bicycle production becomes clear. Finally, Japanese bicycle export which is now mostly used bicycle export will be briefly referenced.

During twelve-month Year to Date 2018, both total unit production and total value production decrease when compared to the same period of the previous year, and total unit production is the lowest in the last fifteen years. As to import, also both total unit and value decrease when compared to the same period of 2017, and total unit import is the lowest in the last fifteen years. As a result, the twelve-month YTD 2018 domestic unit volume which consists of production units and import units is 7,032,081 units, the lowest in the last fifteen years; further decreases more than 8% when compared to the twelve-month YTD2017 when it was the lowest in the last fourteen years.

From 2018 reports, the time series analysis of production shows 15-year history, same as import and export. Also, METI Current Production Statistics has adopted JPY thousand indication instead of JPY million in value from January 2017. Accordingly, this report shows JPY thousand indication in production value after 2017. Moreover, new HS classification has been created under the motorcycle import category which is “8711.60000 Motorcycles with electric motor for propulsion” since the beginning of 2017. Imported electric power assist bicycles now considered to be categorized in this new category. With this change, the analysis subject has been altered from “Other Motorcycles” into this new category. During the twelve-month Year to Date 2018, import of “8711.60000 Motorcycles with electric motor for propulsion” dramatically increases when compared to the same period of 2017.

2. Japanese bicycle production

2 – 1 Outline of twelve-month year to date 2018 bicycle production

According to Ministry of Economy, Trade and Industry (METI) Current Production Statistics Survey, Japanese complete bicycle production in twelve-month year to date 2018 is 849,999 units, and JPY 54,205,715 thousand. Table 1 shows that total unit production decreases 4.6%, and total production value also decreases 3.0%, compared to the same period of the previous year. Average production unit value in twelve-month year to date 2018 is up 1.7% from JPY 62,710 in 2017 to JPY 63,772 in 2018.

Table 1 Twelve-Month Year to Date 2018 Japanese bicycle production

	Total Units	Total Production Value (JPY thousand)	Average Unit Value (JPY)
12-month YTD 2018	849,999	54,205,715	63,772
12-month YTD 2017	890,850	55,864,775	62,710
Variance	-40,851	-1,659,060	1,062
Variance%	-4.6%	-3.0%	1.7%

Source : Ministry of Economy, Trade and Industry (METI) Current Production Statistics Survey (2017 figure is revised) Japan Bicycle Promotion Institute Processing and Analysis
Due to round off, Total may not match.

Table 2 shows the detail by product category of Japanese bicycle production during the twelve-month year to date 2018 compared to the same period of 2017. All categories show both unit and value decrease.

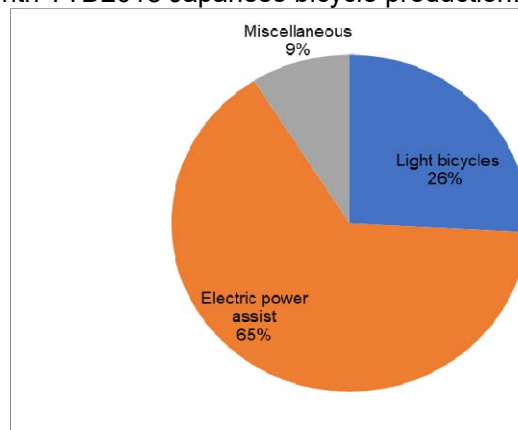
Table 2 Production by category:
Twelve-Month Year to Date 2018 compared to Twelve-Month Year to Date 2017

12-month YTD	2018		2017		Variance			
	units	Value (JPY thousand)	units	Value (JPY thousand)	units	%	Value (JPY thousand)	%
Light bicycles	220,173	6,049,362	239,837	6,413,976	-19,664	-8.2	-364,614	-5.7
Electric power assist	553,325	46,432,722	568,025	47,273,003	-14,700	-2.6	-840,281	-1.8
Miscellaneous	76,501	1,723,631	82,988	2,177,796	-6,487	-7.8	-454,165	-20.9
Total	849,999	54,205,715	890,850	55,864,775	-40,851	-4.6	-1,659,060	-3.0

Source : Ministry of Economy, Trade and Industry (METI) Current Production Statistics Survey (2017 figure is revised) Japan Bicycle Promotion Institute Processing and Analysis
Due to round off, Total may not match.

Chart A shows a graphic presentation of twelve-month year to date 2018 Japanese bicycle unit production share by category based on Table 2. "Electric power assist" captures 65% share, and "Light bicycles" follows capturing 26% share.

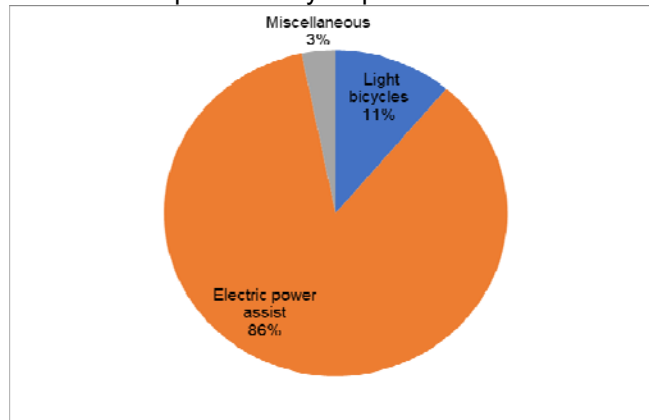
Chart A
Twelve-Month YTD2018 Japanese bicycle production: % unit share by category



Source : Ministry of Economy, Trade and Industry (METI) Current Production Statistics Survey, Japan Bicycle Promotion Institute Processing and Analysis

Chart B shows a graphic presentation of twelve-month year to date 2018 Japanese bicycle production value share by category also based on Table 2. "Electric power assist" captures 86% share.

Chart B
 Twelve-Month YTD2018 Japanese bicycle production: % value share by category



Source : Ministry of Economy, Trade and Industry (METI) Current Production Statistics Survey, Japan Bicycle Promotion Institute Processing and Analysis

Table 3 shows average production unit value by product category in twelve-month year to date 2018 compared to the same period of 2017. “Light bicycles” and “Electric power assist” slightly go up, on the other hand, “Miscellaneous” shows down.

Table 3 Average Unit Value by product category:
 Twelve-Month Year to Date 2018 compared to Twelve-Month Year to Date 2017

Category	Average Unit Value (JPY) 12-month YTD 2018	Average Unit Value (JPY) 12-month YTD 2017	Variance (JPY)	Variance (%)
Light bicycles	27,475	26,743	732	2.7
Electric power assist	83,916	83,223	692	0.8
Miscellaneous	22,531	26,242	-3,711	-14.1
Total	63,772	62,710	1,062	1.7

Source : Ministry of Economy, Trade and Industry (METI) Current Production Statistics Survey (2017 figure is revised) Japan Bicycle Promotion Institute Processing and Analysis
 Due to round off, Total may not match.

Table 4 shows production units, total value and average unit value of “Electric power assist bicycles” by month. From June, unit production has started to decrease when compared to the same period of the previous year, and in December Year to Date period, both unit production and unit value show decrease when compared to the same period of 2017.

Table 4
Production of “Electric power assist bicycles” by month: 2018 compared to 2017

	2018			2017			Variance of unit production	Variance of production value (JPY thousand)	Variance of average unit value (JPY)
	Unit production	Production value (JPY thousand)	Average unit value (JPY)	Unit production	Production value (JPY thousand)	Average unit value (JPY)			
January	46,507	3,774,633	81,163	42,881	3,353,599	78,207	3,626	421,034	2,956
February	54,734	4,613,710	84,293	45,846	3,598,906	78,500	8,888	1,014,804	5,793
March	60,222	4,722,509	78,418	54,542	4,308,845	79,000	5,680	413,664	-582
April	48,918	3,725,556	76,159	48,120	4,160,301	86,457	798	-434,745	-10,298
May	48,452	4,019,285	82,954	45,740	3,923,416	85,776	2,712	95,869	-2,823
June	46,684	3,856,544	82,610	50,332	4,211,644	83,677	-3,648	-355,100	-1,068
July	42,675	3,527,838	82,668	45,142	3,802,134	84,226	-2,467	-274,296	-1,559
August	35,636	3,061,485	85,910	40,093	3,380,717	84,322	-4,457	-319,232	1,588
September	38,060	3,286,304	86,345	47,096	3,827,863	81,278	-9,036	-541,559	5,067
October	37,940	3,403,061	89,696	45,333	3,761,666	82,979	-7,393	-358,605	6,717
November	44,583	3,960,891	88,843	52,343	4,483,587	85,658	-7,760	-522,696	3,185
December	48,914	4,480,906	91,608	50,557	4,460,325	88,224	-1,643	20,581	3,384
YTD	553,325	46,432,722	83,916	568,025	47,273,003	83,223	-14,700	-840,281	692

Source : Ministry of Economy, Trade and Industry (METI) Current Production Statistics Survey
(2017 figure is revised) Japan Bicycle Promotion Institute Processing and Analysis
Due to round off, Total may not match.

2 – 2 Comprehensive production, shipments and inventory status of the Japanese bicycle manufacturers

Table 5 shows comprehensive manufacturing and sales condition including production, receipts, shipments (sales and others) and month end inventory in twelve-month year to date 2018 compared to the same period of 2017.

Table 5 Production, shipments and inventory of the Japanese bicycle manufacturers:
Twelve-Month Year to Date 2018 compared to Twelve-Month Year to Date 2017

Category	Production		Receipts (Units)	Shipments			Dec. end Inventory (Units)
	Units	Value (JPY thousand)		Sales		Others (Units)	
			Units	Value (JPY thousand)	Units		
12-month YTD 2018 Light bicycles	220,173	6,049,362	558,345	574,801	9,547,868	212,702	54,014
12-month YTD 2017 Light bicycles	239,837	6,413,976	649,086	636,524	10,243,438	274,313	62,999
Variance %	-8.2	-5.7	-14.0	-9.7	-6.8	-22.5	-14.3
12-month YTD 2018 Electric power assist	553,325	46,432,722	519,452	667,244	54,451,038	385,093	68,908
12-month YTD 2017 Electric power assist	568,025	47,273,003	476,529	616,282	49,360,778	418,521	48,464
Variance %	-2.6	-1.8	9.0	8.3	10.3	-8.0	42.2
12-month YTD 2018 Miscellaneous	76,501	1,723,631	317,858	329,114	7,510,487	50,098	53,503
12-month YTD 2017 Miscellaneous	82,988	2,177,796	404,482	366,520	8,378,275	115,818	38,356
Variance %	-7.8	-20.9	-21.4	-10.2	-10.4	-56.7	39.5
12-month YTD 2018 Total	849,999	54,205,715	1,395,655	1,571,159	71,509,393	647,893	176,425
12-month YTD 2017 Total	890,850	55,864,775	1,530,097	1,619,326	67,982,491	808,652	149,819
Variance %	-4.6	-3.0	-8.8	-3.0	5.2	-19.9	17.8

Source : Ministry of Economy, Trade and Industry (METI) Current Production Statistics Survey
(2017 figure is revised) Japan Bicycle Promotion Institute Processing and Analysis
Due to round off, Total may not match.

Total receipts units in twelve-month year to date 2018 decrease 8.8% compared to twelve-month year to date 2017. “Light bicycles” and “Miscellaneous” decrease; however, “Electric power assist” increases.

Total units of shipments sales in twelve-month year to date 2018 decrease 3.0% compared to that of twelve-month year to date 2017. Again, “Light bicycles” and “Miscellaneous” show decrease.

Total value of shipments sales up by 5.2% in twelve-month year to date 2018 compared to the same period of 2017. “Electric power assist” up, but “Light bicycles” and “Miscellaneous” down.

Total units of shipments others in twelve-month year to date 2018 decreases by 19.9% compared to the same period of 2017. All three categories show decrease. Shipments others are principally the commissioned products shipped to the consigners.

Total month end inventory in December 2018 is 176,425 units, 17.8% increase compared to December 2017.

2 – 3 Fifteen-year history of twelve-month year to date bicycle production

Table 6 shows a fifteen-year history of twelve-month year to date Japanese bicycle production, shipments and December end inventory from 2004 to 2018.

Table 6 Fifteen-year history of bicycle production and shipments:
Twelve-Month Year to Date December end inventory by Japanese bicycle manufactures

12-month YTD	Production			Shipments			Dec. end Inventory (Units)
	Units	Value*	Average Unit Value (JPY)	Units	Value*	Average Unit Value (JPY)	
2018	849,999	54,205,715	63,772	1,571,159	71,509,393	45,514	176,425
2017	890,850	55,864,775	62,710	1,619,326	67,982,491	41,982	149,819
2016	939,025	53,494	56,968	1,619,165	59,985	37,047	156,850
2015	898,095	46,650	51,943	1,581,409	53,794	34,017	143,061
2014	951,548	47,111	49,510	1,692,522	53,465	31,589	156,625
2013	965,954	42,901	44,413	1,845,784	53,488	28,978	214,539
2012	1,012,314	40,281	39,791	2,662,605	59,321	22,279	231,240
2011	1,101,666	42,786	38,838	3,012,322	65,969	21,900	241,321
2010	1,056,951	36,956	34,965	3,038,180	58,087	19,119	208,140
2009	1,049,469	34,435	32,812	3,098,458	56,256	18,156	219,329
2008	1,094,932	28,846	26,345	3,503,464	53,463	15,260	215,790
2007	1,135,606	25,205	22,195	3,616,043	47,819	13,224	211,533
2006	1,334,512	25,614	19,194	3,924,321	47,485	12,100	214,826
2005	1,926,436	30,741	15,957	5,279,050	57,326	10,859	295,117
2004	2,454,641	36,721	14,960	5,220,936	57,629	11,038	372,452

Source : Ministry of Economy, Trade and Industry (METI) Current Production Statistics Survey
(Before 2017 figure is revised)

Japan Bicycle Promotion Institute Processing and Analysis

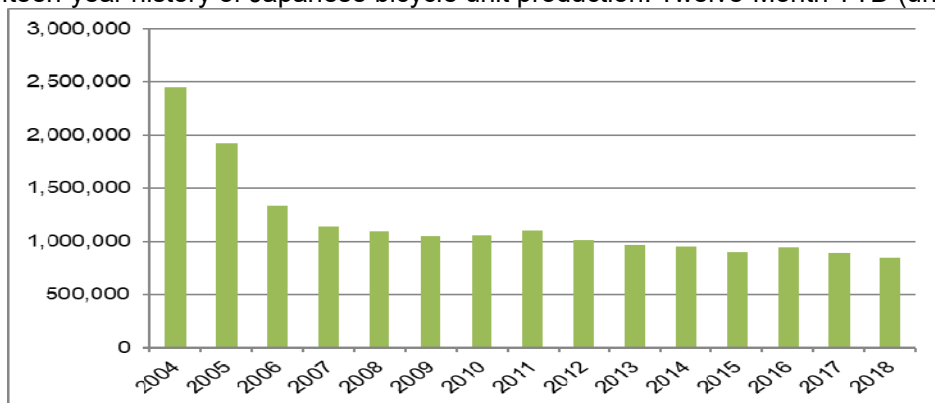
*Before 2016 JPY million, after 2017 JPY thousand

Production units in twelve-month year to date 2018 are the lowest in the last fifteen years. However, production value in this period is the second. With these facts, the average

production unit value is the highest in fifteen years. Also, shipments units in twelve-month year to date 2018 are the lowest in fifteen years, and shipments value in twelve-month year to date 2018 is the highest, make the average shipments unit value in twelve-month year to date 2018 the highest. When compared average production unit value to average shipments unit value, average production unit value has been higher than average shipments unit value for fifteen consecutive years. Month end inventory of December 2018 is 176,425 units, eleventh in the last fifteen years.

Chart C shows a graphic presentation of this fifteen-year history of Japanese bicycle unit production during the twelve-month year to date from 2004 to 2018 based on Table 6. Unit production is stagnated.

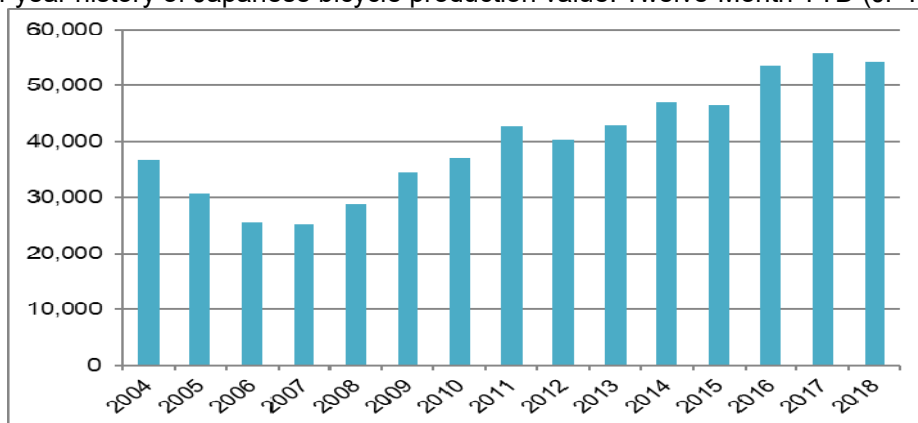
Chart C
Fifteen-year history of Japanese bicycle unit production: Twelve-Month YTD (units)



Source : Ministry of Economy, Trade and Industry (METI) Current Production Statistics Survey, Japan Bicycle Promotion Institute Processing and Analysis

Chart D shows a graphic presentation of the fifteen-year history of Japanese bicycle production value during the twelve-month year to date from 2004 to 2018 also based on Table 6.

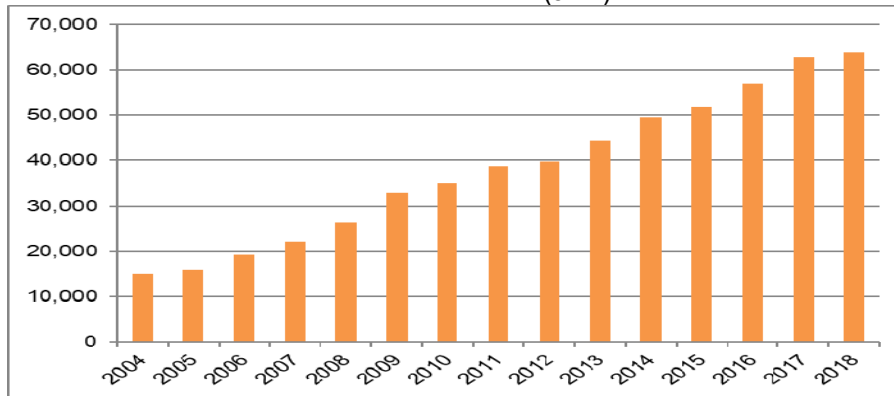
Chart D
Fifteen-year history of Japanese bicycle production value: Twelve-Month YTD (JPY million)



Source : Ministry of Economy, Trade and Industry (METI) Current Production Statistics Survey, Japan Bicycle Promotion Institute Processing and Analysis

Chart E shows a graphic presentation of the fifteen-year history of Japanese bicycle production average unit value during the twelve-month year to date from 2004 to 2018 also based on Table 6. Production average unit value shows up in trend.

Chart E
Fifteen-year history of Japanese bicycle production average unit value:
Twelve-Month YTD (JPY)



Source : Ministry of Economy, Trade and Industry (METI) Current Production Statistics Survey, Japan Bicycle Promotion Institute Processing and Analysis

Table 7 shows the fifteen-year history of the total unit production by month.

Table 7 Fifteen-year history of total production units by month (units)

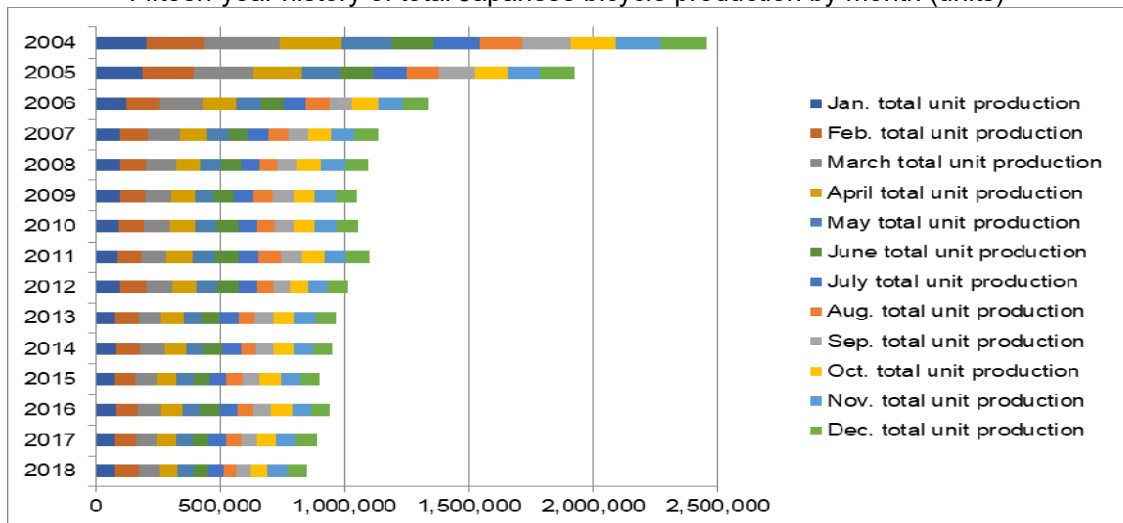
	Jan. total unit production	Feb. total unit production	March total unit production	April total unit production	May total unit production	June total unit production
2018	78,463	93,312	85,655	70,043	64,251	62,512
2017	79,215	86,276	82,628	74,710	63,706	68,896
2016	82,586	88,069	94,670	81,062	72,186	78,781
2015	78,891	81,242	89,722	75,857	66,218	68,133
2014	84,512	93,408	100,416	83,216	72,121	74,255
2013	79,022	92,667	93,062	88,877	75,906	71,711
2012	96,874	105,350	106,202	95,001	85,528	83,915
2011	86,445	98,081	98,935	107,181	90,542	92,009
2010	93,923	99,424	106,524	98,097	87,516	86,269
2009	96,944	99,314	106,639	94,506	76,287	80,900
2008	97,728	104,912	121,903	96,456	82,921	78,520
2007	99,537	108,413	130,721	108,017	86,039	81,714
2006	124,909	133,470	177,599	128,017	97,944	93,522
2005	186,677	207,574	239,561	197,996	151,547	129,232
2004	204,286	233,162	302,975	250,436	197,546	170,012

	July total unit production	Aug. total unit production	Sep. total unit production	Oct. total unit production	Nov. total unit production	Dec. total unit production	Total unit production
2018	57,334	52,692	59,194	66,085	77,433	83,025	849,999
2017	66,260	60,279	67,975	74,071	81,506	85,328	890,850
2016	71,533	64,278	71,472	82,749	76,539	75,100	939,025
2015	64,647	62,481	74,354	82,311	79,144	75,095	898,095
2014	74,981	62,167	68,705	81,603	78,727	77,437	951,548
2013	72,325	66,889	74,392	82,781	84,937	83,385	965,954
2012	74,820	65,045	68,721	73,476	73,695	83,687	1,012,314
2011	83,200	86,553	88,460	86,528	87,020	96,712	1,101,666
2010	75,897	72,056	77,555	82,694	86,498	90,498	1,056,951
2009	80,068	76,206	81,360	88,312	85,103	83,830	1,049,469
2008	76,552	70,488	80,661	95,816	98,763	90,212	1,094,932
2007	79,147	79,509	81,679	91,745	93,341	95,744	1,135,606
2006	87,738	94,248	94,359	105,347	99,636	97,723	1,334,512
2005	138,579	130,081	138,979	135,527	132,069	138,614	1,926,436
2004	185,261	167,839	199,459	181,744	180,862	181,059	2,454,641

Source : Ministry of Economy, Trade and Industry (METI) Current Production Statistics Survey, Japan Bicycle Promotion Institute Processing and Analysis (Before 2017 figure is revised)

Chart F shows a graphic presentation of the fifteen-year history of total production units by month based on Table 7. This chart shows that the bicycle production is carried out relatively equally every month.

Chart F
Fifteen-year history of total Japanese bicycle production by month (units)



Source : Ministry of Economy, Trade and Industry (METI) Current Production Statistics Survey, Japan Bicycle Promotion Institute Processing and Analysis

Table 8 shows a fifteen-year history of twelve-month year to date Japanese bicycle unit production by category.

Table 8 Fifteen-year history of Twelve-Month Year to Date Japanese bicycle unit production by categories (unit)

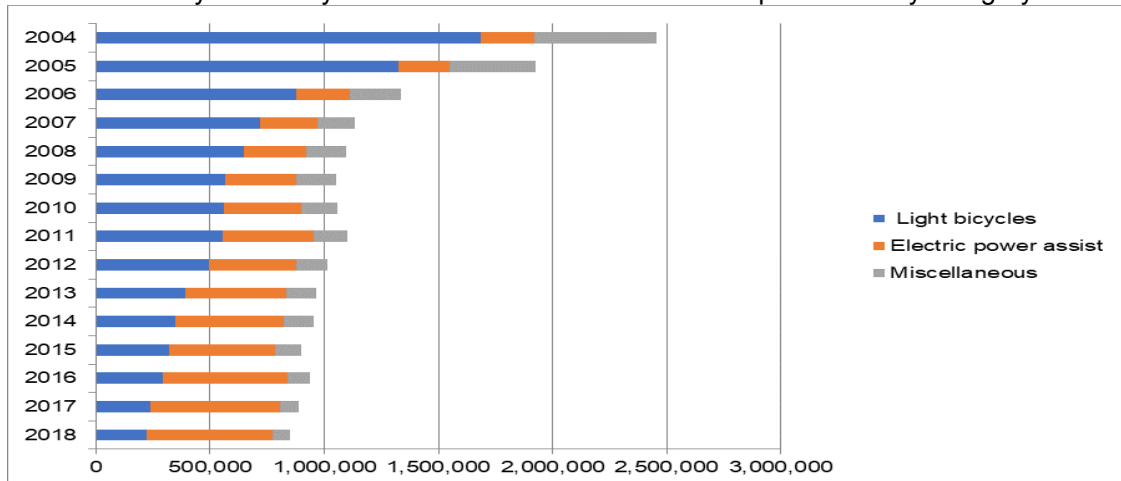
	Light bicycles	Electric power assist	Miscellaneous	Total
2018	220,173	553,325	76,501	849,999
2017	239,837	568,025	82,988	890,850
2016	291,545	547,593	99,887	939,025
2015	320,461	464,800	112,834	898,095
2014	345,825	479,404	126,319	951,548
2013	392,297	443,782	129,875	965,954
2012	492,463	383,196	136,655	1,012,314
2011	553,185	403,208	145,273	1,101,666
2010	562,515	335,576	158,860	1,056,951
2009	566,983	311,337	171,149	1,049,469
2008	647,300	274,475	173,157	1,094,932
2007	719,554	247,899	168,153	1,135,606
2006	876,094	236,494	221,924	1,334,512
2005	1,324,736	223,616	378,084	1,926,436
2004	1,687,888	233,332	533,421	2,454,641

From 2011, "Children & Infant bicycles", "Mini-cycles", "Mountain bikes" and "Special bicycles" have been combined into "Miscellaneous". "Miscellaneous" between 2004 and 2010 include these four categories.

Source : Ministry of Economy, Trade and Industry (METI) Current Production Statistics Survey, Japan Bicycle Promotion Institute Processing and Analysis

Chart G shows a graphic presentation of the fifteen-year history of twelve-month year to date unit production by category based on Table 8. This chart shows that "Light bicycles" are decreasing, and "Electric power assist" is increasing.

Chart G
Fifteen-year history of Twelve-Month Year to Date unit production by category



Source : Ministry of Economy, Trade and Industry (METI) Current Production Statistics Survey, Japan Bicycle Promotion Institute Processing and Analysis

3. Japanese bicycle import

Bicycle import by category is mentioned below. To begin with, import categories and HS numbers in Japan are classified as follows. "Electric power assist bicycles" is not classified as a single category and considered to be included in the category of "Motorcycles with electric motor for propulsion" in Trade Statistics. Please note that "Motorcycles with electric motor for propulsion" includes all electric motorcycles.

Table 9 Import categories and HS numbers

HS number and product category	Bicycle type
8712.00100 Mountain bikes	<ul style="list-style-type: none"> • MTB(includes V brake or disk brake equipped) • Cross bikes
8712.00211 Mini-cycles	<ul style="list-style-type: none"> • Mini-cycles • Small wheel foldable bicycles • BMX
8712.00218 Infant bicycles	<ul style="list-style-type: none"> • Infant bicycles(12 – 16 inch) • Toy bicycles(12 inch two wheel) • Unicycles(12 – 16 inch)
8712.00219 Children bicycles	<ul style="list-style-type: none"> • Children bicycles(18 – 24 inch) • Junior MTB(18 – 24 inch) • Unicycles(18 – 24 inch)
8712.00291 Light bicycles	<ul style="list-style-type: none"> • Light bicycles(excludes outer derailleur equipped) • Single speed, sports use bicycles equipped with inner derailleur.
8712.00299 Miscellaneous	<ul style="list-style-type: none"> • Sports use bicycles • Light bicycles equipped with outer derailleur • Junior MTB(26 inch)
8711.60000 Motorcycles with electric motor for propulsion	<ul style="list-style-type: none"> • Electric motor cycles and electric power assist bicycles considered to be included.

Source : Japan Bicycle Promotion Institute

3 – 1 Outline of twelve-month year to date 2018 bicycle import

Table 10 shows Japanese bicycle import of all product categories excluding “Motorcycles with electric motor for propulsion” in twelve-month year to date 2018 compared to the same period of 2017. Unit total is 6,182,082, 8.8% decrease compared to the same period of 2017. On the other hand, total CIF value is JPY73,929,049 thousands, decreases by 2.3% compared to the same period of 2017, resulted in average CIF unit value of JPY11,959, 7.1% increase.

The currency exchange rate is investigated. The average dollar-yen exchange rate during twelve-month year to date 2017 was US\$1=JPY112.33; however, it gets US\$1=JPY110.50 in twelve-month year to date 2018(Refer chief custom inspector published rate). Japanese Yen gets stronger during this period.

Table 10 Japanese bicycle import:
Twelve-Month Year to Date 2018 compared to Twelve-Month Year to Date 2017
 (“Motorcycles with electric motor for propulsion” is not included)

	Total units	Total CIF Value (JPY thousand)	Average CIF unit value (JPY)
12-month YTD 2018	6,182,082	73,929,049	11,959
12-month YTD 2017	6,777,799	75,706,866	11,170
Variance	-595,717	-1,777,817	789
Variance %	-8.8	-2.3	7.1

Source : Ministry of Finance Japan (MOF) Trade Statistics of Japan,
Japan Bicycle Promotion Institute Processing and Analysis

Table 10 Annex shows twelve-month year to date 2018 import of “Motorcycles with electric motor for propulsion” compared to the same period of 2017 for reference. Both unit and

value show great increase; different from previously mentioned “Electric power assist bicycles” production.

Table 10 Annex (Reference) Japanese import of “Motorcycles with electric motor for propulsion”
Twelve-Month Year to Date 2018 compared to Twelve-Month Year to Date 2017

	Total units	Total CIF Value (JPY thousand)	Average CIF unit value (JPY)
12-month YTD 2018	321,558	12,513,134	38,914
12-month YTD 2017	196,414	7,341,281	37,377
Variance	125,144	5,171,853	1,538
Variance %	63.7	70.4	4.1

Source : Ministry of Finance Japan (MOF) Trade Statistics of Japan,
Japan Bicycle Promotion Institute Processing and Analysis

3 – 2 Twelve-month year to date 2018 bicycle import by category

Table 11 shows twelve-month year to date 2018 Japanese bicycle import by category.

Table 11
Japanese bicycle imports in Twelve-Month Year to Date 2018 by category

HS number and category	Total units	Total CIF Value (JPY thousand)	Average CIF unit value (JPY)
8712.00100 Mountain bikes	155,758	3,040,073	19,518
8712.00211 Mini-cycles	238,234	2,923,424	12,271
8712.00218 Infant bicycles	456,854	3,418,805	7,483
8712.00219 Children bicycles	1,414,315	13,181,323	9,320
8712.00291 Light bicycles	1,760,761	16,937,656	9,620
8712.00299 Miscellaneous	2,156,160	34,427,768	15,967
Total	6,182,082	73,929,049	11,959

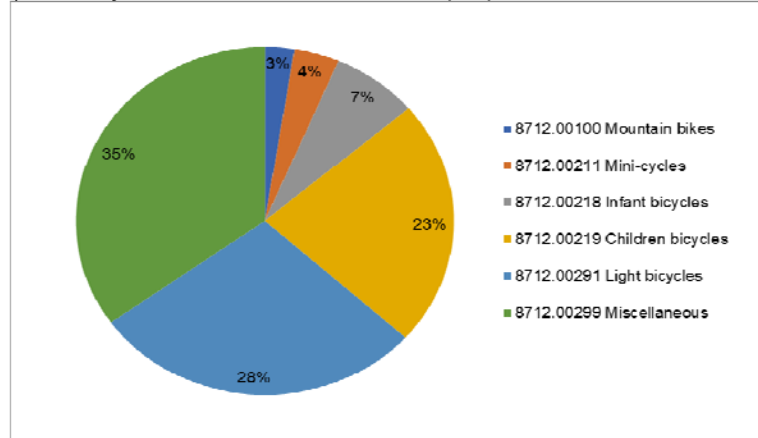
8711.60000 Motorcycles with electric motor for propulsion	321,558	12,513,134	38,914
---	---------	------------	--------

Source : Ministry of Finance Japan (MOF) Trade Statistics of Japan,
Japan Bicycle Promotion Institute Processing and Analysis

The average CIF unit value of HS8712.00100 “Mountain bikes” is JPY 19,518, the highest among the categories except for “Motorcycles with electric motor for propulsion”. The average CIF unit value of HS8712.00291 “Light bicycles” is JPY9,620, and its unit volume is the second biggest, following HS8712.00299 “Miscellaneous” which includes sports use bicycles and light bicycles equipped with outer derailleur. The unit volume and total CIF value of HS8712.00299 “Miscellaneous” are the highest among the categories. Its average CIF unit value is JPY 15,967.

Chart H shows a graphic presentation of twelve-month year to date 2018 Japanese bicycle import unit share by category based on Table 11. “Miscellaneous” captures 35% share and “Light bicycles” captures 28% share as well.

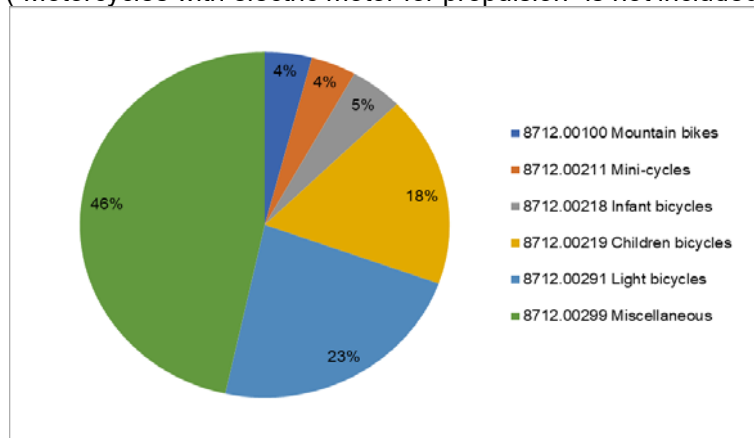
Chart H
 Twelve-Month YTD2018 Japanese bicycle import: Unit share by category
 (“Motorcycles with electric motor for propulsion” is not included)



Source : Ministry of Finance Japan (MOF) Trade Statistics of Japan, Japan Bicycle Promotion Institute Processing and Analysis

Chart I shows a graphic presentation of twelve-month year to date 2018 Japanese bicycle import value share by category also based on Table 11. “Miscellaneous” captures 46% and “Light bicycles” captures 23% share.

Chart I
 Twelve-Month YTD2018 Japanese bicycle import: Value share by category
 (“Motorcycles with electric motor for propulsion” is not included)



Source : Ministry of Finance Japan (MOF) Trade Statistics of Japan, Japan Bicycle Promotion Institute Processing and Analysis

Table 12 shows a twelve-month year to date 2018 Japanese bicycle import by category compared to the same period of the previous year. “Mountain bikes”, “Infant bicycles”, “Children bicycles” and “Light bicycles” show decrease in both unit and value. On the other hand, “Mini-cycles” shows great increase both in unit and value. Bicycle import for bike share may be reflected in this category.

Table 12 Twelve-Month Year to Date 2018 Japanese bicycle import by category compared to Twelve-Month Year to Date 2017

12-month YTD	2018		2017		Variance %	
	units	Total CIF value (JPY thousand)	units	Total CIF value (JPY thousand)	Units	CIF value
8712.00100 Mountain bikes	155,758	3,040,073	168,007	3,251,947	-7.3%	-6.5%
8712.00211 Mini-cycles	238,234	2,923,424	186,440	2,332,948	27.8%	25.3%
8712.00218 Infant bicycles	456,854	3,418,805	503,297	3,672,910	-9.2%	-6.9%
8712.00219 Children bicycles	1,414,315	13,181,323	1,729,446	15,683,774	-18.2%	-16.0%
8712.00291 Light bicycles	1,760,761	16,937,656	1,962,119	18,364,173	-10.3%	-7.8%
8712.00299 Miscellaneous	2,156,160	34,427,768	2,228,490	32,401,114	-3.2%	6.3%
Total	6,182,082	73,929,049	6,777,799	75,706,866	-8.8%	-2.3%
Average unit value (JPY)		11,959		11,170		7.1%

8711.60000 Motorcycles with electric motor for propulsion	321,558	12,513,134	196,414	7,341,281	63.7%	70.4%
Average unit value (JPY)		38,914		37,377		4.1%

Source : Ministry of Finance Japan (MOF) Trade Statistics of Japan, Japan Bicycle Promotion Institute Processing and Analysis

3 – 3 Fifteen year history of twelve-month year to date bicycle import

Table 13 shows a fifteen-year history of twelve-month year to date Japanese bicycle import.

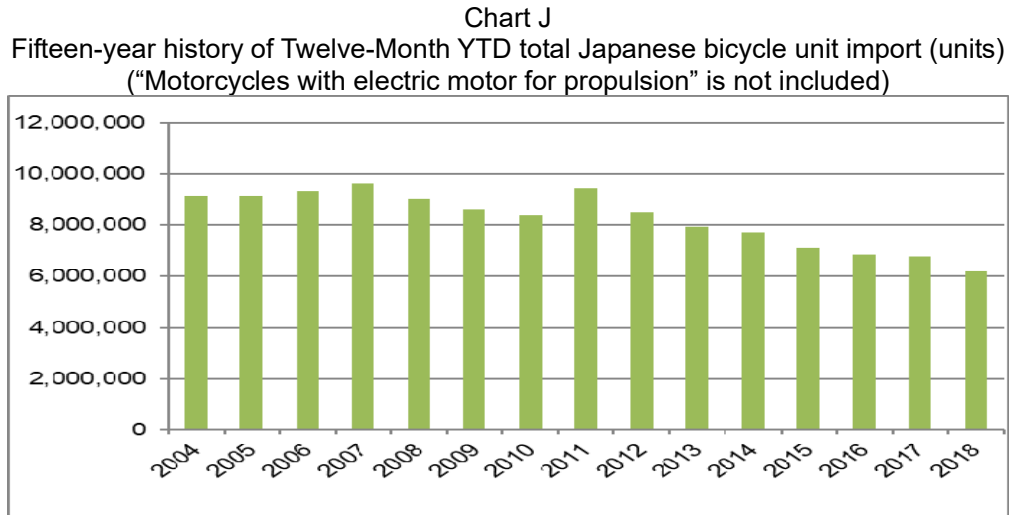
Table 13 Fifteen-year history of Twelve-Month Year to Date Japanese bicycle import: All categories (“Motorcycles with electric motor for propulsion” is not included)

12-month YTD	Total import units	Total CIF value (JPY thousand)	Average CIF unit value (JPY)
2018	6,182,082	73,929,049	11,959
2017	6,777,799	75,706,866	11,170
2016	6,849,387	76,545,161	11,175
2015	7,122,444	93,348,703	13,106
2014	7,734,364	86,330,265	11,162
2013	7,932,395	80,110,588	10,099
2012	8,499,444	72,777,306	8,563
2011	9,450,592	74,541,580	7,888
2010	8,401,946	64,891,050	7,723
2009	8,621,717	70,434,052	8,169
2008	9,033,773	78,142,462	8,650
2007	9,603,314	74,875,361	7,797
2006	9,339,172	65,768,000	7,042
2005	9,143,819	58,146,512	6,359
2004	9,138,411	54,913,763	6,009

Source : Ministry of Finance Japan (MOF) Trade Statistics of Japan, Japan Bicycle Promotion Institute Processing and Analysis

Total unit import in twelve-month year to date 2018 is the lowest in the last fifteen years. On the other hand, total CIF value in twelve-month year to date 2018 is the ninth in this history; make the average CIF unit value JPY 11,959, the second highest in this period.

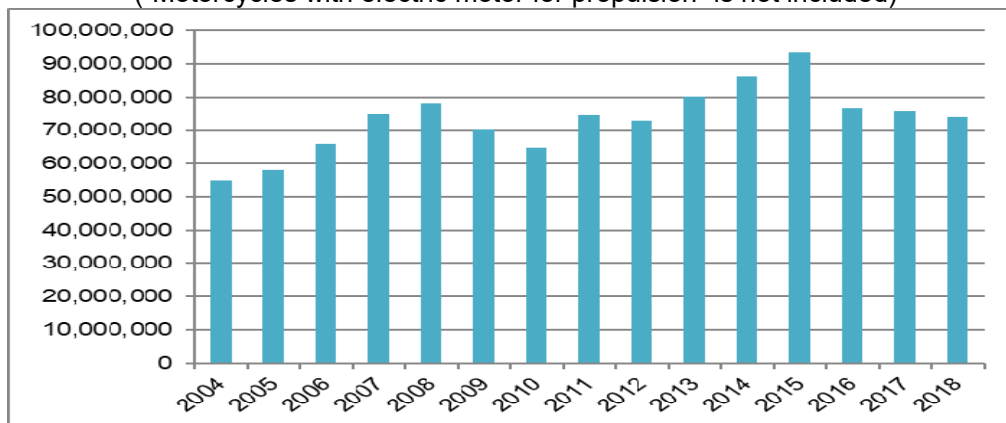
Chart J shows the fifteen-year history of twelve-month year to date total import units based on Table 13. Unit import shows decrease in trend.



Source : Ministry of Finance Japan (MOF) Trade Statistics of Japan,
Japan Bicycle Promotion Institute Processing and Analysis

Chart K shows the fifteen-year history of twelve-month year to date total import CIF value also based on Table 13.

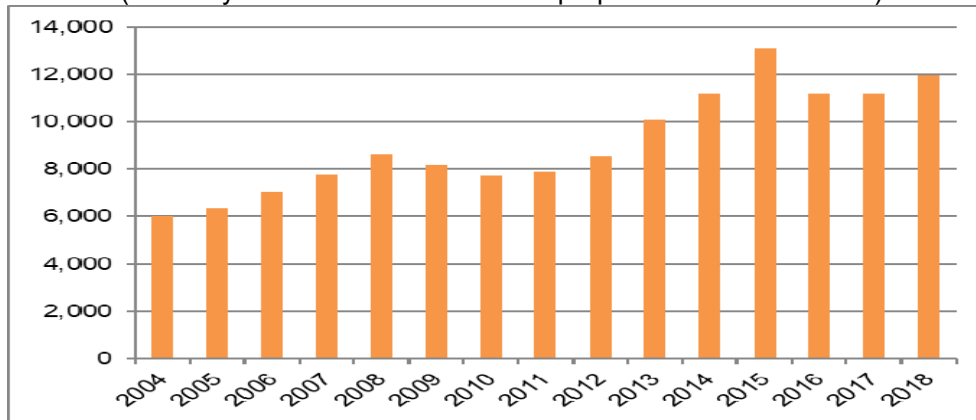
Chart K Fifteen year history of Twelve-Month YTD total Japanese bicycle import CIF value (JPY thousand)
("Motorcycles with electric motor for propulsion" is not included)



Source : Ministry of Finance Japan (MOF) Trade Statistics of Japan,
Japan Bicycle Promotion Institute Processing and Analysis

Chart L shows the fifteen-year history of twelve-month year to date average CIF unit import value also based on Table 13.

Chart L Fifteen year history of Twelve-Month YTD Japanese bicycle average CIFunit import value (JPY)
 (“Motorcycles with electric motor for propulsion” is not included)



Source : Ministry of Finance Japan (MOF) Trade Statistics of Japan,
 Japan Bicycle Promotion Institute Processing and Analysis

Table 14 shows the total unit import by month.

Table 14 Fifteen year history of total import units by month:
 (“Motorcycles with electric motor for propulsion” is not included)

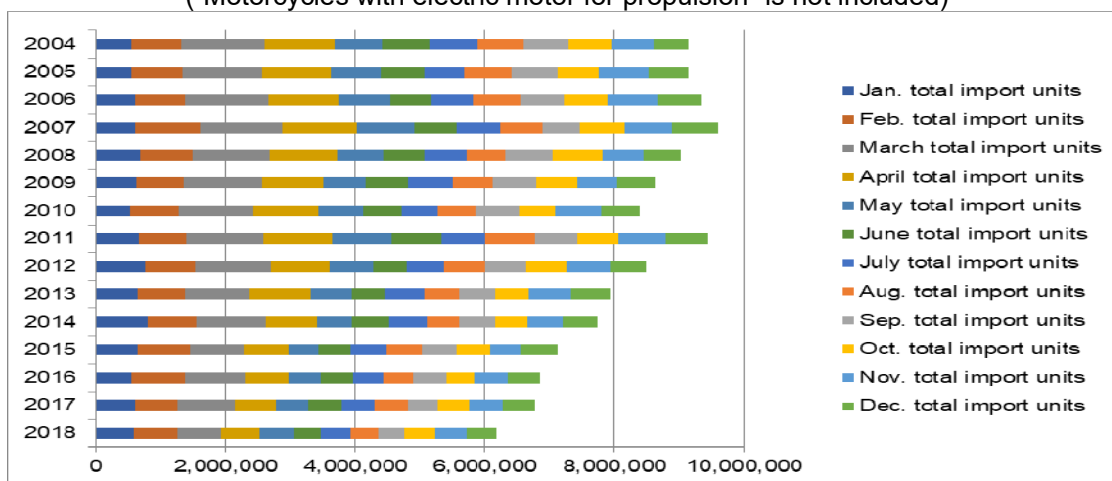
	January total import units	February total import units	March total import units	April total import units	May total import units	June total import units
2018	584,582	672,121	684,815	588,526	515,094	434,024
2017	608,232	654,624	889,358	634,082	499,298	505,257
2016	559,379	823,009	916,762	673,000	493,419	507,531
2015	639,107	809,453	828,696	690,064	462,606	510,639
2014	800,012	758,904	1,067,576	783,049	546,090	581,432
2013	646,439	729,345	997,586	949,665	634,542	514,285
2012	759,838	779,645	1,156,072	904,565	672,252	525,908
2011	661,234	725,936	1,192,986	1,067,890	915,243	768,659
2010	529,116	759,113	1,140,340	1,002,806	691,515	600,223
2009	631,533	717,828	1,226,863	932,220	660,802	652,693
2008	679,048	809,921	1,195,076	1,041,042	718,439	623,626
2007	613,892	988,006	1,275,167	1,152,734	890,124	644,144
2006	602,545	765,063	1,303,124	1,075,231	796,610	633,795
2005	541,343	796,348	1,226,300	1,056,187	777,336	669,039
2004	556,120	767,570	1,280,277	1,081,557	727,411	723,301

	July total import units	Aug. total import units	Sep. total import units	Oct. total import units	Nov. total import units	Dec. total import units	YTD total import units
2018	452,637	430,168	393,334	481,847	479,022	465,912	6,182,082
2017	511,094	522,474	454,877	480,920	514,237	503,346	6,777,799
2016	460,740	464,093	509,475	438,628	518,622	484,729	6,849,387
2015	556,279	542,763	524,133	519,919	484,170	554,615	7,122,444
2014	572,129	504,218	543,409	502,832	540,165	534,548	7,734,364
2013	595,336	535,046	561,806	528,767	640,332	599,246	7,932,395
2012	586,024	629,284	631,719	642,217	649,625	562,295	8,499,444
2011	675,783	776,045	655,654	629,958	722,052	659,152	9,450,592
2010	562,581	582,646	663,734	546,459	719,973	603,440	8,401,946
2009	685,910	619,872	677,716	623,646	620,796	571,838	8,621,717
2008	646,395	612,531	729,659	770,349	625,626	582,061	9,033,773
2007	672,070	649,954	586,098	688,807	741,855	700,463	9,603,314
2006	643,767	724,797	673,445	684,487	767,415	668,893	9,339,172
2005	626,723	720,123	708,659	631,378	780,371	610,012	9,143,819
2004	755,089	715,190	699,179	653,057	648,234	531,426	9,138,411

Source : Ministry of Finance Japan (MOF) Trade Statistics of Japan,
Japan Bicycle Promotion Institute Processing and Analysis

Chart M shows a graphic presentation of the fifteen-year history of total import units by month based on Table 14.

Chart M Fifteen year history of total Japanese bicycle import by month (units)
("Motorcycles with electric motor for propulsion" is not included)



Source : Ministry of Finance Japan (MOF) Trade Statistics of Japan,
Japan Bicycle Promotion Institute Processing and Analysis

Table 15 shows a fifteen-year history of twelve-month year to date Japanese bicycle unit import by category.

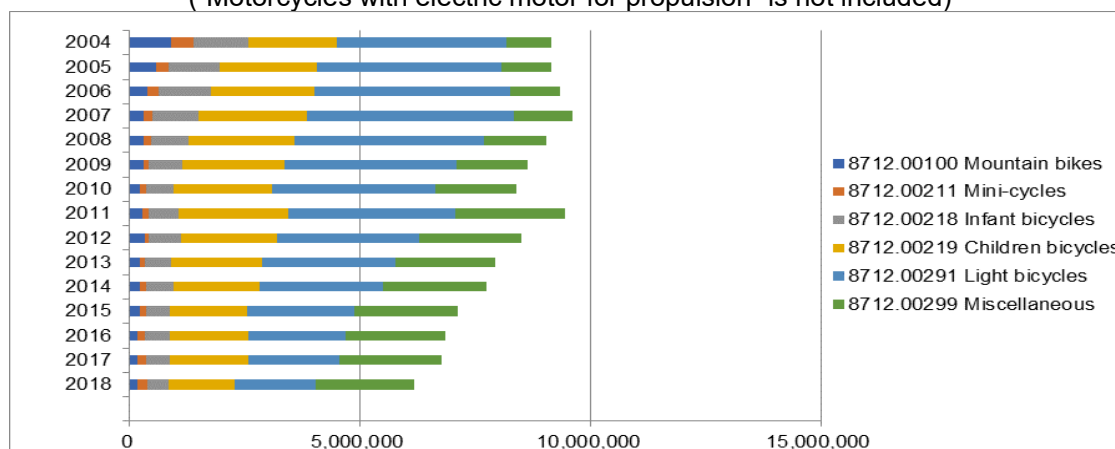
Table 15
Fifteen-year history of Twelve-Month Year to Date Japanese bicycle unit import
by categories (“Motorcycles with electric motor for propulsion” is not included)

	8712.00100 Mountain bikes	8712.00211 Mini-cycles	8712.00218 Infant bicycles	8712.00219 Children bicycles	8712.00291 Light bicycles	8712.00299 Miscellaneous	Total
2018	155,758	238,234	456,854	1,414,315	1,760,761	2,156,160	6,182,082
2017	168,007	186,440	503,297	1,729,446	1,962,119	2,228,490	6,777,799
2016	176,823	157,870	538,882	1,690,152	2,129,712	2,155,948	6,849,387
2015	219,152	142,150	520,523	1,675,477	2,318,196	2,246,946	7,122,444
2014	227,054	130,205	581,229	1,881,428	2,682,510	2,231,938	7,734,364
2013	219,848	99,363	585,485	1,966,906	2,881,192	2,179,601	7,932,395
2012	325,828	92,405	692,111	2,075,504	3,094,262	2,219,334	8,499,444
2011	288,094	110,599	658,735	2,387,853	3,608,216	2,397,095	9,450,592
2010	225,716	124,094	613,003	2,133,052	3,526,359	1,779,722	8,401,946
2009	300,708	118,241	718,801	2,210,631	3,744,364	1,528,972	8,621,717
2008	296,984	157,596	832,968	2,299,371	4,106,823	1,340,031	9,033,773
2007	289,270	213,917	986,539	2,368,441	4,481,866	1,263,281	9,603,314
2006	376,390	263,380	1,134,179	2,236,065	4,247,509	1,081,649	9,339,172
2005	576,127	278,403	1,091,848	2,105,760	4,000,024	1,091,657	9,143,819
2004	904,165	476,528	1,196,247	1,928,895	3,675,231	957,345	9,138,411

Source : Ministry of Finance Japan (MOF) Trade Statistics of Japan,
Japan Bicycle Promotion Institute Processing and Analysis

Chart N shows these import histories.

Chart N
Fifteen-year history of Twelve-Month YTD Japanese bicycle unit import by category (units)
 (“Motorcycles with electric motor for propulsion” is not included)



Source : Ministry of Finance Japan (MOF) Trade Statistics of Japan,
Japan Bicycle Promotion Institute Processing and Analysis

3 – 4 Main source country/area of Japanese bicycle import

Table 16 shows source countries and areas of twelve-month year to date 2018 Japanese bicycle import.

**Table 16 Main source countries and areas of
Japanese bicycle imports in Twelve-Month Year to Date 2018
(“Motorcycles with electric motor for propulsion” is not included)**

Source country/area	Total units	% share of total units	Total CIF Value (JPY thousand)	% share of total value	Average CIF unit value (JPY)
China	6,016,462	97.3	63,096,434	85.3	10,487
Taiwan	142,148	2.3	9,153,422	12.4	64,394
Others	23,472	0.4	1,679,193	2.3	71,540
Total	6,182,082	100.0	73,929,049	100.0	11,959

Source : Ministry of Finance Japan (MOF) Trade Statistics of Japan,
Japan Bicycle Promotion Institute Processing and Analysis Due to round off, Total may not match.

“China” continues to be the biggest source country. It captures 97.3% of total units, and 85.3% of total CIF value. The average CIF unit value is JPY 10,487. “Taiwan” follows “China”, capturing 2.3% of total units, and 12.4% of total CIF value. The average CIF unit value is JPY 64,394. These two-combined captures 99.6% of total units and 97.7% of total CIF value.

Table 17 shows Japanese bicycle import from “China” by category.

**Table 17 Japanese bicycle import from “China” in Twelve-Month Year to Date 2018
by category (“Motorcycles with electric motor for propulsion” is not included)**

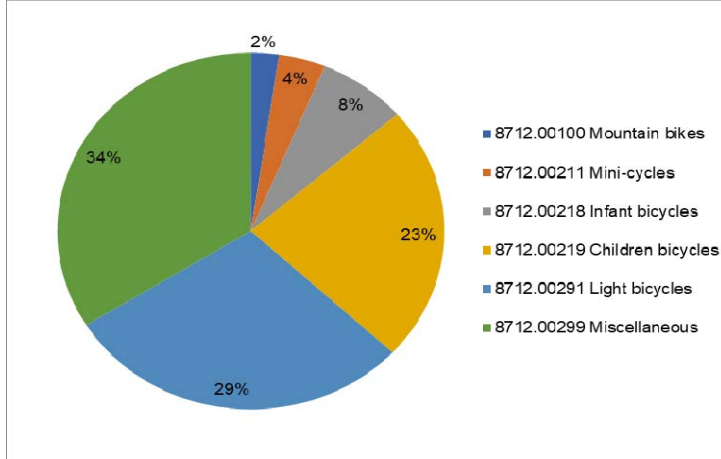
HS number and category	Total units	Total CIF Value (JPY thousand)	Average CIF unit value (JPY)
8712.00100 Mountain bikes	141,244	2,326,982	16,475
8712.00211 Mini-cycles	234,807	2,775,421	11,820
8712.00218 Infant bicycles	446,196	3,033,536	6,799
8712.00219 Children bicycles	1,399,172	12,864,189	9,194
8712.00291 Light bicycles	1,759,370	16,886,072	9,598
8712.00299 Miscellaneous	2,035,673	25,210,234	12,384
Total	6,016,462	63,096,434	10,487

Source : Ministry of Finance Japan (MOF) Trade Statistics of Japan,
Japan Bicycle Promotion Institute Processing and Analysis

Chart O shows a graphic presentation of twelve-month year to date 2018 Japanese bicycle import unit share from “China” by category based on Table 17. “Miscellaneous” captures 34% share and “Light bicycles” follows to capture 29% share. Unit import volume from “China” is so huge; therefore, this chart looks like Chart H which shows Japanese total unit import share by category.

Chart O Twelve-Month YTD2018 Japanese bicycle import from “China”:
Unit share by category

(“Motorcycles with electric motor for propulsion” is not included)

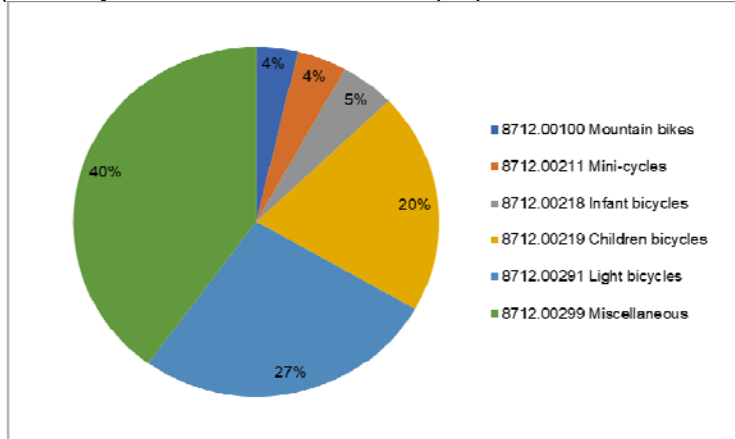


Source : Ministry of Finance Japan (MOF) Trade Statistics of Japan,
Japan Bicycle Promotion Institute Processing and Analysis

Chart P shows a graphic presentation of twelve-month year to date 2018 Japanese bicycle import value share from “China” by category also based on Table 17. “Miscellaneous” captures 40% share and “Light bicycles” follows capturing 27% share.

Chart P Twelve-Month YTD2018 Japanese bicycle import from “China”:
Value share by category

(“Motorcycles with electric motor for propulsion” is not included)



Source : Ministry of Finance Japan (MOF) Trade Statistics of Japan,
Japan Bicycle Promotion Institute Processing and Analysis

Then, Table 18 follows to show Japanese bicycle import from “Taiwan” by category.

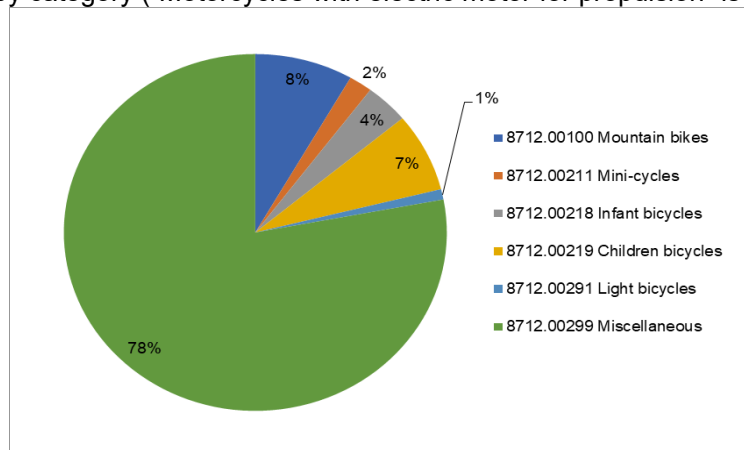
Table 18 Japanese bicycle import from “Taiwan” in Twelve-Month Year to Date 2018 by category (“Motorcycles with electric motor for propulsion” is not included)

HS number and category	Total units	Total CIF Value (JPY thousand)	Average CIF unit value (JPY)
8712.00100 Mountain bikes	11,780	560,342	47,567
8712.00211 Mini-cycles	2,813	92,256	32,796
8712.00218 Infant bicycles	5,231	39,607	7,572
8712.00219 Children bicycles	10,170	205,797	20,236
8712.00291 Light bicycles	1,338	44,970	33,610
8712.00299 Miscellaneous	110,816	8,210,450	74,091
Total	142,148	9,153,422	64,394

Source : Ministry of Finance Japan (MOF) Trade Statistics of Japan, Japan Bicycle Promotion Institute Processing and Analysis

Chart Q shows a graphic presentation of twelve-month year to date 2018 Japanese bicycle import unit share from “Taiwan” by category based on Table 18. This chart looks totally different from Chart H which shows total import or Chart O which shows import from “China”. “Miscellaneous” captures 78% big share and “Mountain Bikes” follows to capture 8% share. On the other hand, “Light bicycles” only captures 1% share.

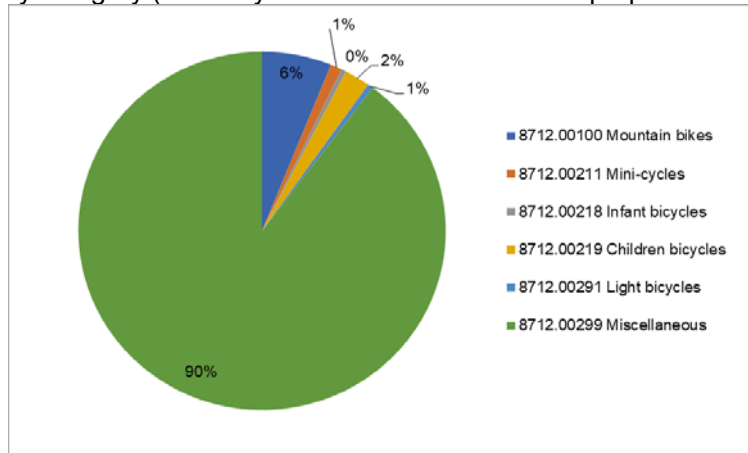
Chart Q Twelve-Month YTD2018 Japanese bicycle import from “Taiwan”: Unit share by category (“Motorcycles with electric motor for propulsion” is not included)



Source : Ministry of Finance Japan (MOF) Trade Statistics of Japan, Japan Bicycle Promotion Institute Processing and Analysis

Moreover, Chart R shows a graphic presentation of twelve-month year to date 2018 Japanese bicycle import value share from “Taiwan” by category also based on Table 18. The characteristics appear more remarkably than the unit import share. “Miscellaneous” captures 90% share and “Mountain Bikes” follows capturing 6% share. The share of “Light bicycles” is only 1%.

Chart R Twelve-Month YTD2018 Japanese bicycle import from “Taiwan”:
Value share by category (“Motorcycles with electric motor for propulsion” is not included)



Source : Ministry of Finance Japan (MOF) Trade Statistics of Japan,
Japan Bicycle Promotion Institute Processing and Analysis

Then, Table 19 shows source countries and areas of twelve-month year to date 2018 Japanese “Motorcycles with electric motor for propulsion” import compared to that of 2017 for reference.

Table 19 (Reference) Main source countries and areas of Japanese
“Motorcycles with electric motor for propulsion” import
in Twelve-Month Year to Date 2018 compared to 2017

Source country/area	Total units	% share of total units	Total CIF Value (JPY thousand)	% share of total value	Average CIF unit value (JPY)
12-month YTD 2018 China	316,613	98.5	11,994,537	95.9	37,884
12-month YTD 2017 China	195,214	99.4	6,955,380	94.7	35,630
Variance %	121,399	-0.9	5,039,157	1.1	2,254
12-month YTD 2018 Taiwan	4,219	1.3	284,310	2.3	67,388
12-month YTD 2017 Taiwan	927	0.5	160,707	2.2	173,362
Variance %	3,292	0.8	123,603	0.1	-105,974
12-month YTD 2018 Others	726	0.2	234,287	1.9	322,709
12-month YTD 2017 Others	273	0.1	225,194	3.1	824,886
Variance %	453	0.1	9,093	-1.2	-502,177
12-month YTD 2018 Total	321,558	100.0	12,513,134	100.0	38,914
12-month YTD 2017 Total	196,414	100.0	7,341,281	100.0	37,377
Variance %	125,144	0.0	5,171,853	0.0	1,538

Source : Ministry of Finance Japan (MOF) Trade Statistics of Japan,
Japan Bicycle Promotion Institute Processing and Analysis Due to round off, Total may not match.

4. Domestic unit volume

Almost all the Japanese bicycle export is used bicycle export to developing countries. Therefore, production units plus import units can be defined as domestic unit volume. Table 20 shows a fifteen-year history of Twelve-Month Year to Date domestic unit volume. Twelve-Month Year to Date 2018 domestic unit volume is 7,032,081, 8.3% decrease from the same period of the previous year, and the lowest in the last fifteen years. And its domestic production ratio is 12.1%.

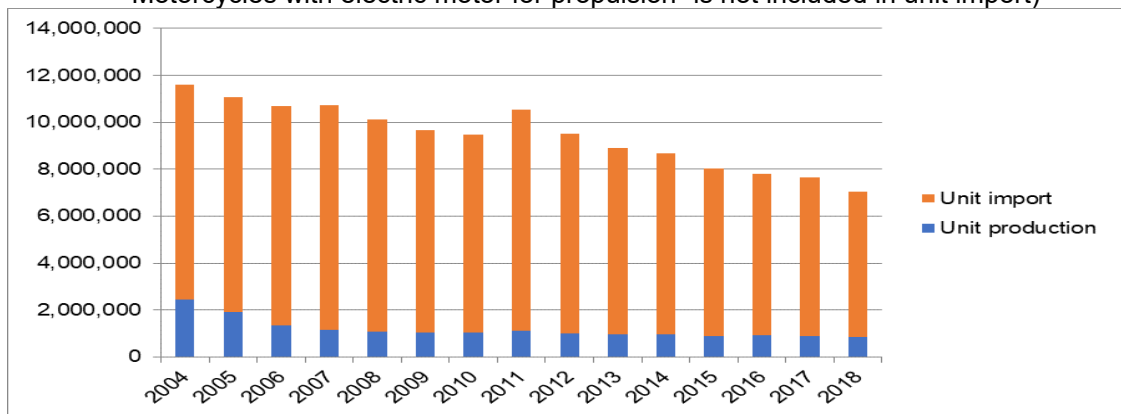
Table 20 Fifteen-year history of Twelve-Month Year to Date Japanese bicycle domestic unit volume
 (“Electric power assist bicycles” is included in unit production;
 “Motorcycles with electric motor for propulsion” is not included in unit import)

12-month YTD	Unit production	Unit import	Domestic unit volume	Domestic production ratio %
2018	849,999	6,182,082	7,032,081	12.1
2017	890,850	6,777,799	7,668,649	11.6
2016	939,025	6,849,387	7,788,412	12.1
2015	898,095	7,122,444	8,020,539	11.2
2014	951,548	7,734,364	8,685,912	11.0
2013	965,954	7,932,395	8,898,349	10.9
2012	1,012,314	8,499,444	9,511,758	10.6
2011	1,101,666	9,450,592	10,552,258	10.4
2010	1,056,951	8,401,946	9,458,897	11.2
2009	1,049,469	8,621,717	9,671,186	10.9
2008	1,094,932	9,033,773	10,128,705	10.8
2007	1,135,606	9,603,314	10,738,920	10.6
2006	1,334,512	9,339,172	10,673,684	12.5
2005	1,926,436	9,143,819	11,070,255	17.4
2004	2,454,641	9,138,411	11,593,052	21.2

Source : Ministry of Economy, Trade and Industry (METI) Current Production Statistics Survey
 (Before 2017 figure is revised)
 Ministry of Finance Japan (MOF) Trade Statistics of Japan,
 Japan Bicycle Promotion Institute Processing and Analysis

Chart S is the graphic presentation of this history.

Chart S Fifteen-year history of Twelve-Month YTD domestic bicycle unit volume (units)
 (“Electric power assist bicycles” is included in unit production;
 “Motorcycles with electric motor for propulsion” is not included in unit import)



Source : Ministry of Economy, Trade and Industry (METI) Current Production Statistics Survey
 (Before 2017 figure is revised)
 Ministry of Finance Japan (MOF) Trade Statistics of Japan,
 Japan Bicycle Promotion Institute Processing and Analysis

5. Japanese bicycle export

Almost all the Japanese bicycle export is used bicycle export to developing countries. Table 21 shows main destination countries and areas of Japanese bicycle export in Twelve-Month Year to Date 2018. Average FOB unit value clearly proves that the bicycle export is used

bicycle export. In this part of the report, “Motorcycles with electric motor for propulsion” is excluded.

Table 21 Twelve-Month Year to Date 2018
Japanese bicycle export by destination countries and areas

Destination country/area	Total units	Total FOB value (JPY thousand)	Average FOB unit value (JPY)
Ghana	548,107	829,633	1,514
Myanmar	515,036	692,186	1,344
Cambodia	460,292	893,066	1,940
Iraq	334,289	613,474	1,835
Afghanistan	302,825	459,928	1,519
Tanzania	282,724	497,508	1,760
Nigeria	135,655	254,766	1,878
Philippines	109,426	188,359	1,721
UAE	109,014	181,122	1,661
Iran	46,104	73,172	1,587
Others	224,954	481,163	2,139
Total	3,068,426	5,164,377	1,683

Source : Ministry of Finance Japan (MOF) Trade Statistics of Japan,
Japan Bicycle Promotion Institute Processing and Analysis

Table 22 shows a fifteen-year history of twelve-month year to date Japanese bicycle export from 2004 to 2018. In 2018, total units are the sixth largest and total value is the third highest in the last fifteen years. The average unit value in twelve-month year to date 2018 is JPY 1,683, the third highest in the last fifteen years.

Table 22 Fifteen-year history of Twelve-Month Year to Date Japanese bicycle export:
All categories

12-month YTD	Total units	Total FOB value (JPY thousand)	Average FOB unit value (JPY)
2018	3,068,426	5,164,377	1,683
2017	3,162,452	5,085,776	1,608
2016	3,160,819	5,389,032	1,705
2015	3,558,029	6,475,518	1,820
2014	3,301,196	5,128,410	1,554
2013	3,142,282	4,320,542	1,375
2012	2,980,626	3,863,945	1,296
2011	2,676,620	3,505,035	1,310
2010	2,393,342	3,180,711	1,329
2009	2,214,528	3,000,068	1,355
2008	2,283,080	3,772,868	1,653
2007	2,095,644	3,028,212	1,445
2006	1,340,136	1,467,329	1,095
2005	1,221,802	1,364,928	1,117
2004	1,009,023	1,259,526	1,248

Source : Ministry of Finance Japan (MOF) Trade Statistics of Japan,
Japan Bicycle Promotion Institute Processing and Analysis

#####