

2020 Japanese bicycle production, import and export

1. Preface

The purpose of this report is to show the Japanese bicycle market trend through comprehensive investigation of the Japanese bicycle production, import and export. First, the production of the domestic bicycle manufacturers will be clarified using Ministry of Economy, Trade and Industry (METI) Current Production Statistics, and total production activities including shipment, inventories and time series trend will be explained. Second, due to the current big share of import bicycles in the Japanese bicycle market, bicycle import will be investigated by categories and by time series using Ministry of Finance Japan (MOF) Trade Statistics, and general bicycle market trend will be grasped. Then, comprehensive Japanese bicycle market trend including bicycle production becomes clear. Finally, Japanese bicycle export which is now mostly used bicycle export will be briefly referenced.

In 2020, total value production increase; however, total unit production decrease when compared to the previous year. The total value production is highest in the last fifteen years. As to import, even though total unit slightly increases when compared to 2019, total value import in 2020 decreases when compared to the previous year. As a result, the 2020 domestic unit volume which consists of production units and import units is 7,177,558 units, two consecutive slight yearly increase since 2018.

2. Japanese bicycle production

2 – 1 Outline of 2020 bicycle production

According to Ministry of Economy, Trade and Industry (METI) Current Production Statistics Survey, Japanese complete bicycle production in 2020 is 868,589 units, and JPY 61,570,138 thousand. Table 1 shows that total unit production decreases 1.8%, on the other hand, total production value increases 8.8%, compared to the previous year. Average production unit value in 2020 is up 10.8% from JPY 63,991 in 2019 to JPY 70,885 in 2020.

Table 1 Japanese bicycle production in 2020 compared to the previous year

	Total Units	Total Production Value (JPY thousand)	Average Unit Value (JPY)
2020	868,589	61,570,138	70,885
2019	884,078	56,573,095	63,991
Variance	-15,489	4,997,043	6,894
Variance%	-1.8%	8.8%	10.8%

Source : Ministry of Economy, Trade and Industry (METI) Current Production Statistics Survey
(Final figures)

Japan Bicycle Promotion Institute Processing and Analysis
Due to round off, Total may not match.

Table 2 shows the detail by product category of Japanese bicycle production during 2020 compared to 2019. Both unit production and value production of “Light bicycles” and “Miscellaneous” decrease when compared to the previous year. On the contrary, “Electric power assist” shows both unit and value increase.

Table 2 Production by category: 2020 compared to 2019

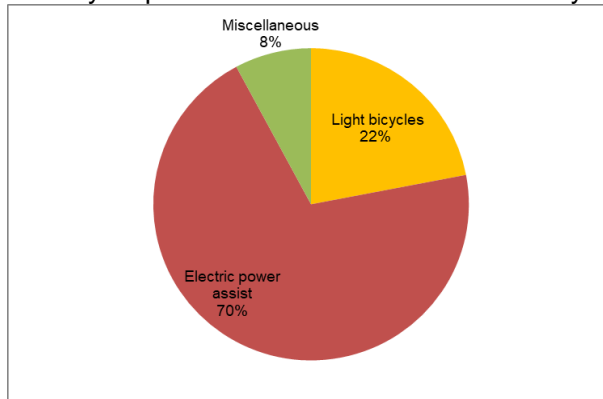
Category	2020		2019		Variance			
	units	Value (JPY thousand)	units	Value (JPY thousand)	units	%	Value (JPY thousand)	%
Light bicycles	190,943	5,240,627	226,743	6,249,062	-35,800	-15.8	-1,008,435	-16.1
Electric power assist	609,430	54,881,096	574,537	48,465,266	34,893	6.1	6,415,830	13.2
Miscellaneous	68,216	1,448,415	82,798	1,858,767	-14,582	-17.6	-410,352	-22.1
Total	868,589	61,570,138	884,078	56,573,095	-15,489	-1.8	4,997,043	8.8

Source : Ministry of Economy, Trade and Industry (METI) Current Production Statistics Survey
(Final figures)

Japan Bicycle Promotion Institute Processing and Analysis
Due to round off, Total may not match.

Chart A shows a graphic presentation of 2020 Japanese bicycle unit production share by category based on Table 2. “Electric power assist” captures 70% share, and “Light bicycles” follows capturing 22% share.

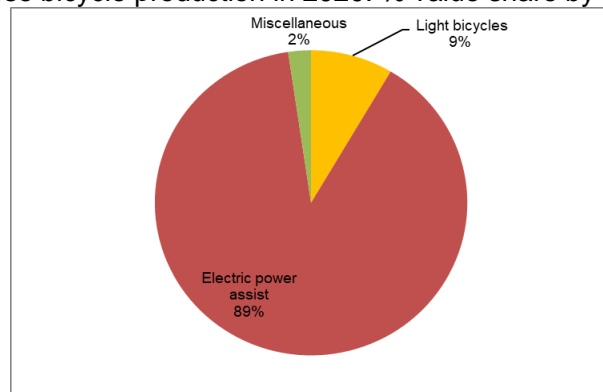
Chart A
Japanese bicycle production in 2020: % unit share by category



Source : Ministry of Economy, Trade and Industry (METI) Current Production Statistics Survey
Japan Bicycle Promotion Institute Processing and Analysis

Chart B shows a graphic presentation of 2020 Japanese bicycle production value share by category also based on Table 2. “Electric power assist” captures 89% share.

Chart B
Japanese bicycle production in 2020: % value share by category



Source : Ministry of Economy, Trade and Industry (METI) Current Production Statistics Survey
Japan Bicycle Promotion Institute Processing and Analysis

Table 3 shows average production unit value by product category in 2020 compared to 2019. “Electric power assist bicycles” goes up, but “Light bicycles” and “Miscellaneous” go down.

Table 3 Average Production Unit Value by category in 2020 compared to 2019

Category	2020 Average Production Unit Value (JPY)	2019 Average Production Unit Value (JPY)	Variance (JPY)	Variance (%)
Light bicycles	27,446	27,560	-114	-0.4
Electric power assist	90,053	84,355	5,698	6.8
Miscellaneous	21,233	22,449	-1,217	-5.4
Total	70,885	63,991	6,894	10.8

Source : Ministry of Economy, Trade and Industry (METI) Current Production Statistics Survey
(Final figures)

Japan Bicycle Promotion Institute Processing and Analysis
Due to round off, Total may not match.

Table 4 shows production units, total value, and average unit value of “Electric power assist bicycles” by month. In February and March, both unit production and production value show decrease. In other months, all unit and value production show increase when compared to the same month of the previous year. Also, average production unit value increase twelve consecutive months. Yearly total unit production, production value and average unit value in 2020 show increase compared to those of 2019.

Table 4
Production of “Electric power assist bicycles” in 2020 by month compared to 2019

	2020			2019			Variance of unit production	Variance of production value (JPY thousand)	Variance of average unit value (JPY)
	Unit production	Production value (JPY thousand)	Average unit value (JPY)	Unit production	Production value (JPY thousand)	Average unit value (JPY)			
January	61,066	5,534,393	90,630	45,863	4,143,089	90,336	15,203	1,391,304	293
February	39,719	3,618,969	91,114	52,657	4,730,903	89,844	-12,938	-1,111,934	1,271
March	35,967	3,303,444	91,847	59,799	4,950,984	82,794	-23,832	-1,647,540	9,053
April	59,182	5,073,920	85,734	51,476	4,230,362	82,181	7,706	843,558	3,553
May	48,076	4,287,363	89,179	46,409	4,017,825	86,574	1,667	269,538	2,605
June	47,638	4,166,149	87,454	38,373	3,208,779	83,621	9,265	957,370	3,834
July	49,416	4,486,367	90,788	44,116	3,724,531	84,426	5,300	761,836	6,362
August	42,251	3,869,888	91,593	38,424	3,265,004	84,973	3,827	604,884	6,620
September	55,546	5,050,713	90,928	39,868	3,051,821	76,548	15,678	1,998,892	14,380
October	57,745	5,240,666	90,755	49,906	4,060,130	81,356	7,839	1,180,536	9,400
November	56,186	5,112,483	90,992	55,132	4,442,608	80,581	1,054	669,875	10,411
December	56,638	5,136,741	90,694	52,514	4,639,230	88,343	4,124	497,511	2,352
YTD	609,430	54,881,096	90,053	574,537	48,465,266	84,355	34,893	6,415,830	5,698

Source : Ministry of Economy, Trade and Industry (METI) Current Production Statistics Survey
(Final figures)

Japan Bicycle Promotion Institute Processing and Analysis
Due to round off, Total may not match.

2 – 2 Comprehensive production, shipments and inventory status of the Japanese bicycle manufacturers

Table 5 shows comprehensive manufacturing and sales condition including production, receipts, shipments (sales and others) and month end inventory in 2020 compared to 2019.

Table 5 Production, shipments and inventory of the Japanese bicycle manufacturers in 2020 compared to 2019

Category	Production		Receipts (Units)	Shipments			Dec. end Inventory (Units)
	Units	Value (JPY thousand)		Sales		Others (Units)	
				Units	Value (JPY thousand)		
2020 Light bicycles	190,943	5,240,627	501,813	554,120	9,374,978	145,458	45,535
2019 Light bicycles	226,743	6,249,062	572,169	602,778	9,595,865	195,021	52,596
Variance %	-15.8	-16.1	-12.3	-8.1	-2.3	-25.4	-13.4
2020 Electric power assist	609,430	54,881,096	405,998	737,738	61,815,610	271,108	61,669
2019 Electric power assist	574,537	48,465,266	441,130	698,227	57,935,278	330,678	55,087
Variance %	6.1	13.2	-8.0	5.7	6.7	-18.0	11.9
2020 Miscellaneous	68,216	1,448,415	283,767	334,489	5,914,763	15,831	52,266
2019 Miscellaneous	82,798	1,858,767	275,022	326,317	5,763,293	24,060	50,960
Variance %	-17.6	-22.1	3.2	2.5	2.6	-34.2	2.6
2020 Total	868,589	61,570,138	1,191,578	1,626,347	77,105,351	432,397	159,470
2019 Total	884,078	56,573,095	1,288,321	1,627,322	73,294,436	549,759	158,643
Variance %	-1.8	8.8	-7.5	-0.1	5.2	-21.3	0.5

Source : Ministry of Economy, Trade and Industry (METI) Current Production Statistics Survey
(Final figures)

Japan Bicycle Promotion Institute Processing and Analysis
Due to round off, Total may not match.

Total receipts units in 2020 decrease 7.5% compared to 2019. “Light bicycles” and “Electric power assist” decrease; however, “Miscellaneous” increases.

Total units of shipments sales in 2020 decrease 0.1% compared to that of 2019. “Light bicycles” shows decreases; however, “Electric power assist” and “Miscellaneous” increase.

Total value of shipments sales up by 5.2% in 2020 compared to 2019. “Light bicycles” shows down, but “Electric power assist” and “Miscellaneous” show up.

Total units of shipments others in 2020 decreases by 21.3% compared to 2019. All three categories show decrease. Shipments others are principally the commissioned products shipped to the consigners.

Total month end inventory in December 2020 is 159,470 units, 0.5% increase compared to December 2019.

2 – 3 Fifteen-year history of bicycle production

Table 6 shows a fifteen-year history of Japanese bicycle production, shipments and December end inventory from 2006 to 2020.

Table 6 Fifteen-year history of bicycle production and shipments:
December end inventory by Japanese bicycle manufactures

	Production			Shipments			Dec. end Inventory (Units)
	Units	Value*	Average Unit Value (JPY)	Units	Value*	Average Unit Value (JPY)	
2020	868,589	61,570,138	70,885	1,626,347	77,105,351	47,410	159,470
2019	884,078	56,573,095	63,991	1,627,322	73,294,436	45,040	158,643
2018	859,850	54,033,271	62,840	1,544,624	69,456,502	44,967	163,325
2017	890,850	55,864,775	62,710	1,619,326	67,982,491	41,982	149,819
2016	939,025	53,493,706	56,967	1,619,165	59,984,751	37,047	156,850
2015	898,095	46,649,982	51,943	1,581,409	53,794,112	34,017	143,061
2014	951,548	47,111	49,510	1,692,522	53,465	31,589	156,625
2013	965,954	42,901	44,413	1,845,784	53,488	28,978	214,539
2012	1,012,314	40,281	39,791	2,662,605	59,321	22,279	231,240
2011	1,101,666	42,786	38,838	3,012,322	65,969	21,900	241,321
2010	1,056,951	36,956	34,965	3,038,180	58,087	19,119	208,140
2009	1,049,469	34,435	32,812	3,098,458	56,256	18,156	219,329
2008	1,094,932	28,846	26,345	3,503,464	53,463	15,260	215,790
2007	1,135,606	25,205	22,195	3,616,043	47,819	13,224	211,533
2006	1,334,512	25,614	19,194	3,924,321	47,485	12,100	214,826

Source : Ministry of Economy, Trade and Industry (METI) Current Production Statistics Survey
(Final figures)

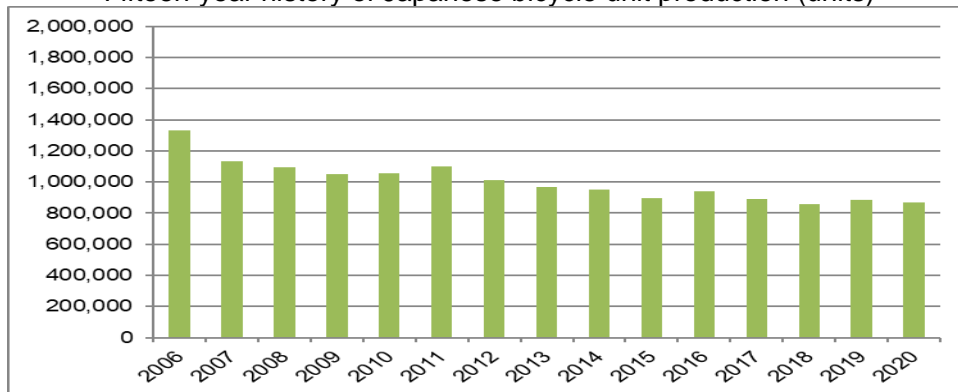
Japan Bicycle Promotion Institute Processing and Analysis

*Before 2014 JPY million, after 2015 JPY thousand

Production units in 2020 are the fourteenth in the last fifteen years. On the other hand, production value in this period is the highest. With these facts, the average production unit value is the highest in fifteen years. Although shipments units in 2020 are the eleventh in fifteen years; shipments value in 2020 is the highest, make average shipments unit value in 2020 also the highest. When compared average production unit value to average shipments unit value, average production unit value has been higher than average shipments unit value for fifteen consecutive years. Month end inventory of December 2020 is 159,470 units, tenth in the last fifteen years.

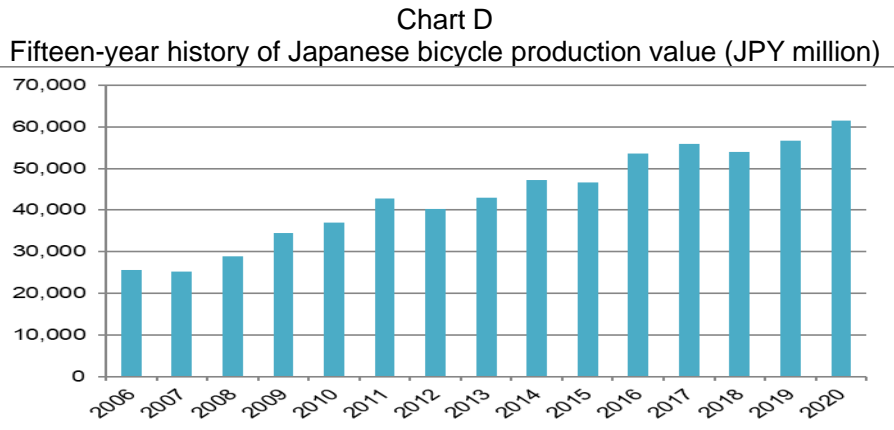
Chart C shows a graphic presentation of this fifteen-year history of Japanese bicycle unit production from 2006 to 2020 based on Table 6. Unit production is stagnated.

Chart C
Fifteen-year history of Japanese bicycle unit production (units)



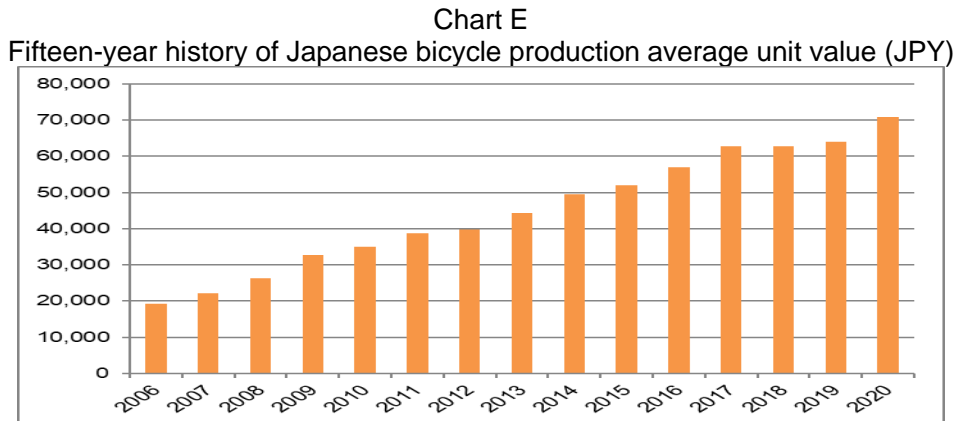
Source : Ministry of Economy, Trade and Industry (METI) Current Production Statistics Survey
Japan Bicycle Promotion Institute Processing and Analysis

Chart D shows a graphic presentation of the fifteen-year history of Japanese bicycle production value from 2006 to 2020 also based on Table 6. Production value shows up in trend.



Source : Ministry of Economy, Trade and Industry (METI) Current Production Statistics Survey
Japan Bicycle Promotion Institute Processing and Analysis

Chart E shows a graphic presentation of the fifteen-year history of Japanese bicycle production average unit value from 2006 to 2020 also based on Table 6. Production average unit value also shows up in trend.



Source : Ministry of Economy, Trade and Industry (METI) Current Production Statistics Survey
Japan Bicycle Promotion Institute Processing and Analysis

Table 7 shows the fifteen-year history of the total unit production by month.

Table 7 Fifteen-year history of total production units by month (units)

	Jan. total unit production	Feb. total unit production	March total unit production	April total unit production	May total unit production	June total unit production
2020	94,071	73,867	61,428	79,748	61,642	63,727
2019	76,009	91,011	89,091	74,447	65,676	55,254
2018	78,463	93,312	85,972	76,189	65,486	63,636
2017	79,215	86,276	82,628	74,710	63,706	68,896
2016	82,586	88,069	94,670	81,062	72,186	78,781
2015	78,891	81,242	89,722	75,857	66,218	68,133
2014	84,512	93,408	100,416	83,216	72,121	74,255
2013	79,022	92,667	93,062	88,877	75,906	71,711
2012	96,874	105,350	106,202	95,001	85,528	83,915
2011	86,445	98,081	98,935	107,181	90,542	92,009
2010	93,923	99,424	106,524	98,097	87,516	86,269
2009	96,944	99,314	106,639	94,506	76,287	80,900
2008	97,728	104,912	121,903	96,456	82,921	78,520
2007	99,537	108,413	130,721	108,017	86,039	81,714
2006	124,909	133,470	177,599	128,017	97,944	93,522

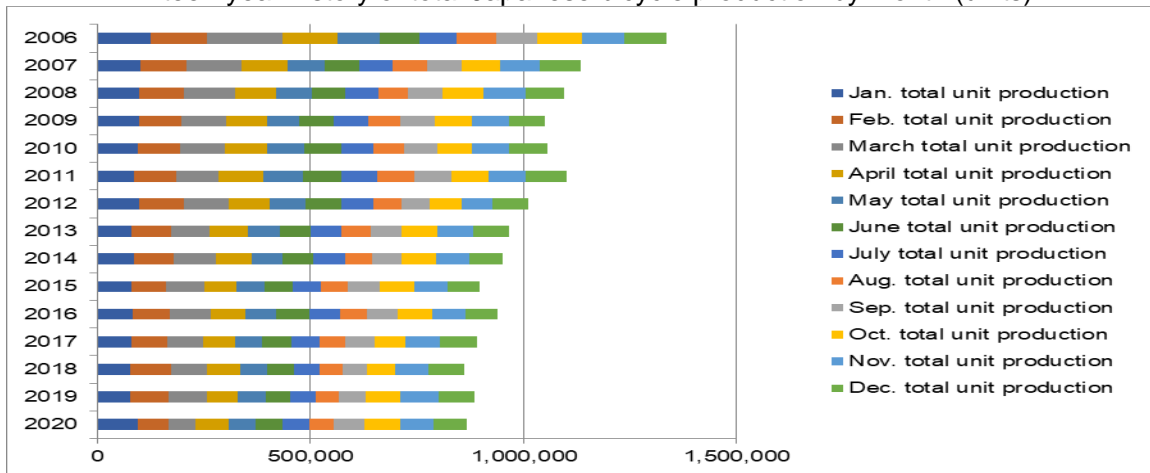
	July total unit production	Aug. total unit production	Sep. total unit production	Oct. total unit production	Nov. total unit production	Dec. total unit production	Total unit production
2020	64,629	55,052	74,051	81,832	78,681	79,861	868,589
2019	60,227	54,286	64,805	80,110	89,150	84,012	884,078
2018	57,921	53,703	58,999	65,885	77,279	83,005	859,850
2017	66,260	60,279	67,975	74,071	81,506	85,328	890,850
2016	71,533	64,278	71,472	82,749	76,539	75,100	939,025
2015	64,647	62,481	74,354	82,311	79,144	75,095	898,095
2014	74,981	62,167	68,705	81,603	78,727	77,437	951,548
2013	72,325	66,889	74,392	82,781	84,937	83,385	965,954
2012	74,820	65,045	68,721	73,476	73,695	83,687	1,012,314
2011	83,200	86,553	88,460	86,528	87,020	96,712	1,101,666
2010	75,897	72,056	77,555	82,694	86,498	90,498	1,056,951
2009	80,068	76,206	81,360	88,312	85,103	83,830	1,049,469
2008	76,552	70,488	80,661	95,816	98,763	90,212	1,094,932
2007	79,147	79,509	81,679	91,745	93,341	95,744	1,135,606
2006	87,738	94,248	94,359	105,347	99,636	97,723	1,334,512

Source : Ministry of Economy, Trade and Industry (METI) Current Production Statistics Survey
(Final figures)

Japan Bicycle Promotion Institute Processing and Analysis

Chart F shows a graphic presentation of the fifteen-year history of total production units by month based on Table 7. This chart shows that the bicycle production is carried out relatively equally every month.

Chart F
Fifteen-year history of total Japanese bicycle production by month (units)



Source : Ministry of Economy, Trade and Industry (METI) Current Production Statistics Survey
Japan Bicycle Promotion Institute Processing and Analysis

Table 8 shows a fifteen-year history of Japanese bicycle unit production by category.

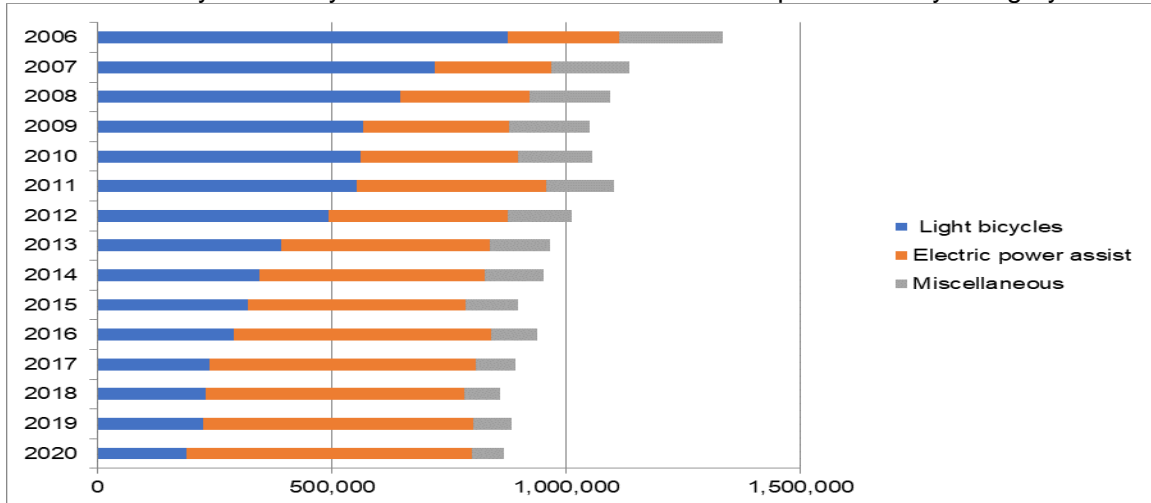
Table 8 Fifteen-year history of Japanese bicycle unit production by categories (unit)

	Light bicycles	Electric power assist	Miscellaneous	Total
2020	190,943	609,430	68,216	868,589
2019	226,743	574,537	82,798	884,078
2018	230,049	551,920	77,881	859,850
2017	239,837	568,025	82,988	890,850
2016	291,545	547,593	99,887	939,025
2015	320,461	464,800	112,834	898,095
2014	345,825	479,404	126,319	951,548
2013	392,297	443,782	129,875	965,954
2012	492,463	383,196	136,655	1,012,314
2011	553,185	403,208	145,273	1,101,666
2010	562,515	335,576	158,860	1,056,951
2009	566,983	311,337	171,149	1,049,469
2008	647,300	274,475	173,157	1,094,932
2007	719,554	247,899	168,153	1,135,606
2006	876,094	236,494	221,924	1,334,512

From 2011, "Children & Infant bicycles", "Mini-cycles", "Mountain bikes" and "Special bicycles" have been combined into "Miscellaneous". "Miscellaneous" between 2004 and 2010 include these four categories.
Source : Ministry of Economy, Trade and Industry (METI) Current Production Statistics Survey(Final figures)
Japan Bicycle Promotion Institute Processing and Analysis

Chart G shows a graphic presentation of the fifteen-year history of unit production by category based on Table 8. This chart shows that "Light bicycles" is decreasing, and "Electric power assist" is increasing.

Chart G
Fifteen-year history of Twelve-Month Year to Date unit production by category



Source : Ministry of Economy, Trade and Industry (METI) Current Production Statistics Survey
Japan Bicycle Promotion Institute Processing and Analysis

3. Japanese bicycle import

Bicycle import by category is mentioned below. To begin with, import categories and HS numbers in Japan are classified as follows. “Electric power assist bicycles” is not classified as a single category and included in the category of “Motorcycles with electric motor for propulsion” in Trade Statistics. Please note that “Motorcycles with electric motor for propulsion” includes all electric motorcycles.

Table 9 Import categories and HS numbers

HS number and product category	Bicycle type
8712.00100 Mountain bikes	<ul style="list-style-type: none"> • MTB(includes V brake or disk brake equipped) • Cross bikes
8712.00211 Mini-cycles	<ul style="list-style-type: none"> • Mini-cycles • Small wheel foldable bicycles • BMX
8712.00218 Infant bicycles	<ul style="list-style-type: none"> • Infant bicycles(12 – 16 inch) • Toy bicycles(12 inch two wheel) • Unicycles(12 – 16 inch)
8712.00219 Children bicycles	<ul style="list-style-type: none"> • Children bicycles(18 – 24 inch) • Junior MTB(18 – 24 inch) • Unicycles(18 – 24 inch)
8712.00291 Light bicycles	<ul style="list-style-type: none"> • Light bicycles(excludes outer derailleur equipped) • Single speed, sports use bicycles equipped with inner derailleur.
8712.00299 Miscellaneous	<ul style="list-style-type: none"> • Sports use bicycles • Light bicycles equipped with outer derailleur • Junior MTB(26 inch)
8711.60000 Motorcycles with electric motor for propulsion	<ul style="list-style-type: none"> • Electric motor cycles and electric power assist bicycles considered to be included.

Source : Japan Bicycle Promotion Institute

3 – 1 Outline of 2020 bicycle import

Table 10 shows Japanese bicycle import of all product categories excluding “Motorcycles with electric motor for propulsion” in 2020 compared to 2019. Unit total is 6,308,969, 1.1% increase compared to 2019. On the other hand, total CIF value is JPY69,079,402 thousands, decreases by 3.8% compared to 2019, resulted in average CIF unit value of JPY10,949, 4.9% down.

The currency exchange rate is investigated. The average dollar-yen exchange rate in 2019 was US\$1=JPY109.08; however, it gets US\$1=JPY106.98 in 2020(Refer chief custom inspector published rate).

Table 10 Japanese bicycle import in 2020 compared to 2019
 (“Motorcycles with electric motor for propulsion” is not included)

	Total units	Total CIF Value (JPY thousand)	Average CIF unit value (JPY)
2020	6,308,969	69,079,402	10,949
2019	6,239,721	71,817,668	11,510
Variance	69,248	-2,738,266	-560
Variance %	1.1	-3.8	-4.9

Source : Ministry of Finance Japan (MOF) Trade Statistics of Japan
 (Final figures in 2019, Double confirmed figures in 2020)
 Japan Bicycle Promotion Institute Processing and Analysis
 Due to round off, Total may not match.

Table 10 Annex shows 2020 import of “Motorcycles with electric motor for propulsion” compared to 2019 for reference. Both unit and value show increase. Average unit value also shows up; however, it does not go up as unit or value.

Table 10 Annex (Reference) Japanese import of
 “Motorcycles with electric motor for propulsion” in 2020 compared to 2019

	Total units	Total CIF Value (JPY thousand)	Average CIF unit value (JPY)
2020	492,468	18,714,000	38,000
2019	383,595	14,058,499	36,649
Variance	108,873	4,655,501	1,351
Variance %	28.4	33.1	3.7

Source : Ministry of Finance Japan (MOF) Trade Statistics of Japan
 (Final figures in 2019, Double confirmed figures in 2020)
 Japan Bicycle Promotion Institute Processing and Analysis
 Due to round off, Total may not match.

3 – 2 2019 bicycle import by category

Table 11 shows 2020 Japanese bicycle import by category.

Table 11 Japanese bicycle imports in 2020 by category

HS number and category	Total units	Total CIF Value (JPY thousand)	Average CIF unit value (JPY)
8712.00100 Mountain bikes	165,124	2,654,834	16,078
8712.00211 Mini-cycles	319,141	3,607,062	11,302
8712.00218 Infant bicycles	558,930	3,885,351	6,951
8712.00219 Children bicycles	1,558,542	13,332,912	8,555
8712.00291 Light bicycles	1,447,190	13,762,466	9,510
8712.00299 Miscellaneous	2,260,042	31,836,777	14,087
Total	6,308,969	69,079,402	10,949

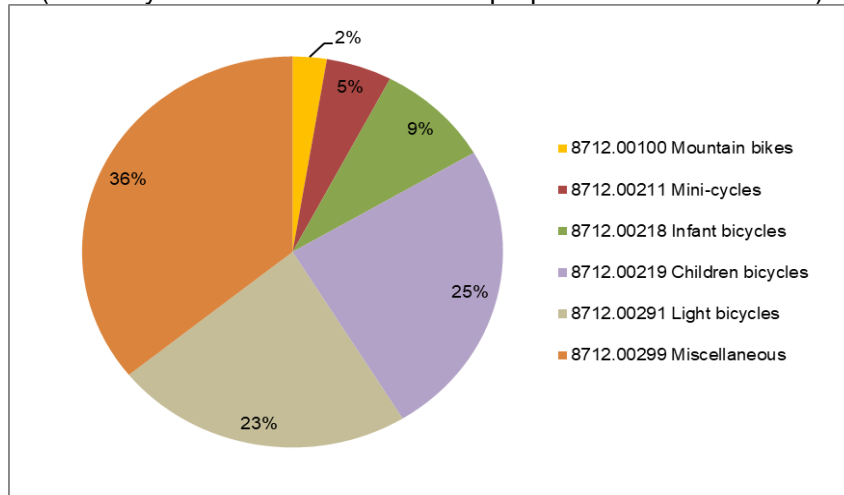
8711.60000 Motorcycles with electric motor for propulsion	492,468	18,714,000	38,000
-----------------------------------------------------------	---------	------------	--------

Source : Ministry of Finance Japan (MOF) Trade Statistics of Japan
(Double confirmed figures)
Japan Bicycle Promotion Institute Processing and Analysis

The average CIF unit value of HS8712.00100 “Mountain bikes” is JPY 16,078, the highest among the categories except for “Motorcycles with electric motor for propulsion”. The average CIF unit value of HS8712.00219 “Children bicycles” is JPY8,555, and its unit volume is the second biggest, following HS8712.00299 “Miscellaneous” which includes sports use bicycles and light bicycles equipped with outer derailleurs. The unit volume and total CIF value of HS8712.00299 “Miscellaneous” are the highest among the categories. Its average CIF unit value is JPY 14,087.

Chart H shows a graphic presentation of 2020 Japanese bicycle import unit share by category based on Table 11. “Miscellaneous” captures 36% share and “Children bicycles” captures 25% share as well.

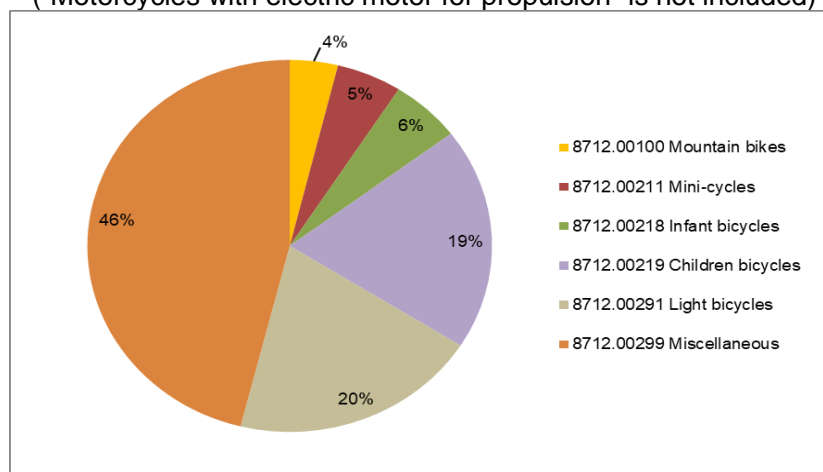
Chart H
Japanese bicycle import in 2020: Unit share by category
 (“Motorcycles with electric motor for propulsion” is not included)



Source : Ministry of Finance Japan (MOF) Trade Statistics of Japan
Japan Bicycle Promotion Institute Processing and Analysis

Chart I shows a graphic presentation of 2020 Japanese bicycle import value share by category also based on Table 11. “Miscellaneous” captures 46% and “Light bicycles” captures 20% share.

Chart I
Japanese bicycle import in 2020: Value share by category
("Motorcycles with electric motor for propulsion" is not included)



Source : Ministry of Finance Japan (MOF) Trade Statistics of Japan
Japan Bicycle Promotion Institute Processing and Analysis

Table 12 shows a 2020 Japanese bicycle import by category compared to the previous year. "Mini-cycles" and "Infant bicycles" show increase both in unit and value. On the other hand, "Mountain bikes", "Children bicycles" and "Miscellaneous" increase in units but decrease in value. "Light bicycles" shows decrease in both unit and value.

Table 12 Japanese bicycle import by category in 2020 compared to 2019

Category	2020		2019		Variance %	
	units	Total CIF value (JPY thousand)	units	Total CIF value (JPY thousand)	Units	CIF value
8712.00100 Mountain bikes	165,124	2,654,834	160,977	2,755,409	2.6%	-3.7%
8712.00211 Mini-cycles	319,141	3,607,062	273,416	3,421,303	16.7%	5.4%
8712.00218 Infant bicycles	558,930	3,885,351	405,711	2,951,477	37.8%	31.6%
8712.00219 Children bicycles	1,558,542	13,332,912	1,510,586	13,515,879	3.2%	-1.4%
8712.00291 Light bicycles	1,447,190	13,762,466	1,670,668	15,801,881	-13.4%	-12.9%
8712.00299 Miscellaneous	2,260,042	31,836,777	2,218,363	33,371,719	1.9%	-4.6%
Total	6,308,969	69,079,402	6,239,721	71,817,668	1.1%	-3.8%
Average unit value (JPY)		10,949		11,510		-4.9%

8711.60000 Motorcycles with electric motor for propulsion	492,468	18,714,000	383,595	14,058,499	28.4%	33.1%
Average unit value (JPY)		38,000		36,649		3.7%

Source : Ministry of Finance Japan (MOF) Trade Statistics of Japan
(Final figures in 2019, Double confirmed figures in 2020)
Japan Bicycle Promotion Institute Processing and Analysis

3 – 3 Fifteen year history of bicycle import

Table 13 shows a fifteen-year history of Japanese bicycle import.

Table 13 Fifteen-year history of Japanese bicycle import:
All categories (“Motorcycles with electric motor for propulsion” is not included)

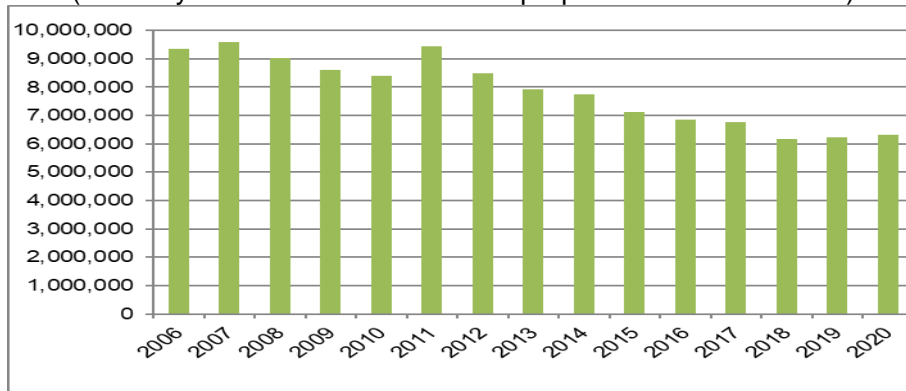
	Total import units	Total CIF value (JPY thousand)	Average CIF unit value (JPY)
2020	6,308,969	69,079,402	10,949
2019	6,239,721	71,817,668	11,510
2018	6,182,082	73,955,914	11,963
2017	6,777,799	75,706,866	11,170
2016	6,849,387	76,545,161	11,175
2015	7,122,444	93,348,703	13,106
2014	7,734,364	86,330,265	11,162
2013	7,932,395	80,110,588	10,099
2012	8,499,444	72,777,306	8,563
2011	9,450,592	74,541,580	7,888
2010	8,401,946	64,891,050	7,723
2009	8,621,717	70,434,052	8,169
2008	9,033,773	78,142,462	8,650
2007	9,603,314	74,875,361	7,797
2006	9,339,172	65,768,000	7,042

Source : Ministry of Finance Japan (MOF) Trade Statistics of Japan
(Final figures before 2019, Double confirmed figures in 2020)
Japan Bicycle Promotion Institute Processing and Analysis

Total unit import in 2020 is the thirteenth in the last fifteen years. Total CIF value in 2020 is also the thirteenth in this history; make the average CIF unit value JPY 10,949, the seventh highest in this period.

Chart J shows the fifteen-year history of total import units based on Table 13.

Chart J
Fifteen-year history of total Japanese bicycle unit import (units)
 (“Motorcycles with electric motor for propulsion” is not included)

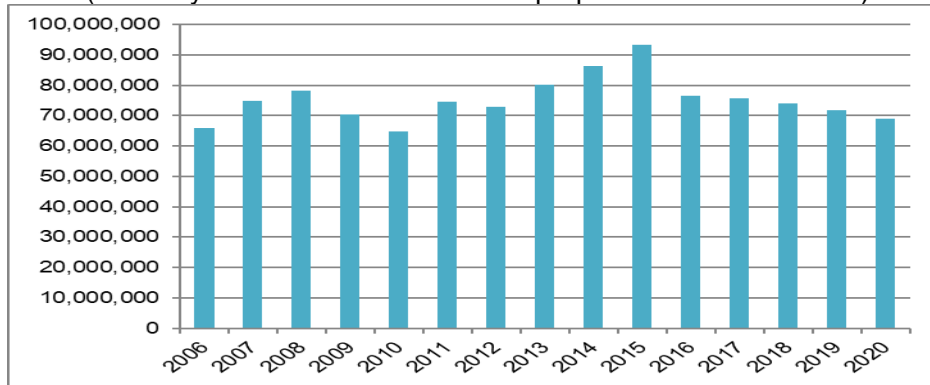


Source : Ministry of Finance Japan (MOF) Trade Statistics of Japan
Japan Bicycle Promotion Institute Processing and Analysis

Chart K shows the fifteen-year history of total import CIF value also based on Table 13.

Chart K Fifteen year history of total Japanese bicycle import CIF value (JPY thousand)

(“Motorcycles with electric motor for propulsion” is not included)

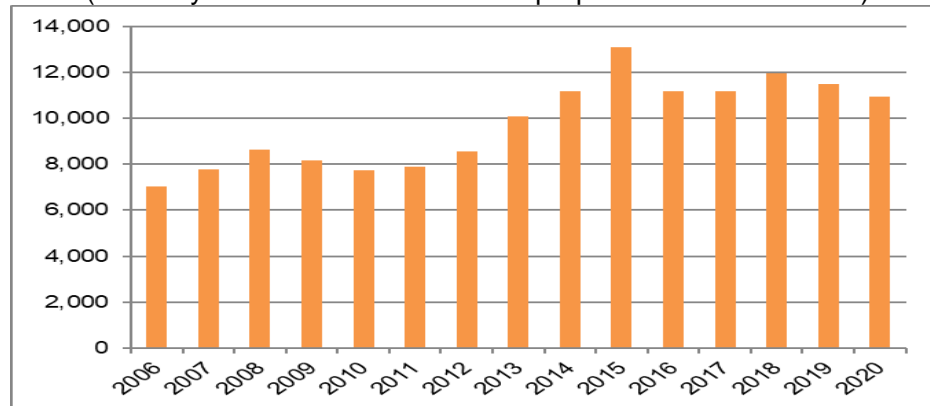


Source : Ministry of Finance Japan (MOF) Trade Statistics of Japan
Japan Bicycle Promotion Institute Processing and Analysis

Chart L shows the fifteen-year history of average CIF unit import value also based on Table 13.

Chart L Fifteen year history of Japanese bicycle average CIF unit import value (JPY)

(“Motorcycles with electric motor for propulsion” is not included)



Source : Ministry of Finance Japan (MOF) Trade Statistics of Japan
Japan Bicycle Promotion Institute Processing and Analysis

Table 14 shows the total unit import by month.

Table 14 Fifteen year history of total import units by month:
 (“Motorcycles with electric motor for propulsion” is not included)

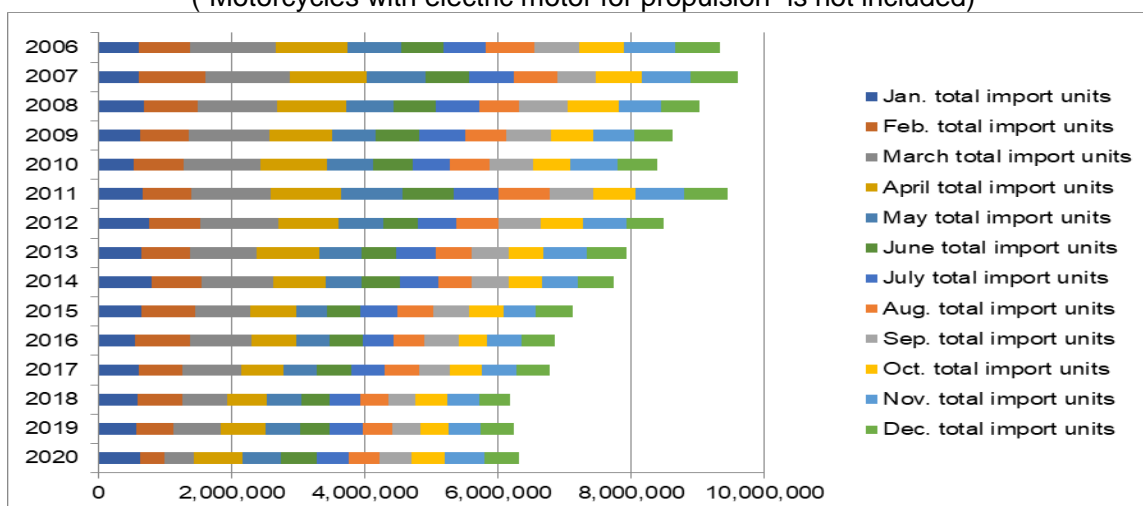
	January total import units	February total import units	March total import units	April total import units	May total import units	June total import units
2020	631,508	352,782	456,381	724,752	568,495	549,837
2019	561,860	557,809	720,388	674,931	511,046	445,684
2018	584,582	672,121	684,815	588,526	515,094	434,024
2017	608,232	654,624	889,358	634,082	499,298	505,257
2016	559,379	823,009	916,762	673,000	493,419	507,531
2015	639,107	809,453	828,696	690,064	462,606	510,639
2014	800,012	758,904	1,067,576	783,049	546,090	581,432
2013	646,439	729,345	997,586	949,665	634,542	514,285
2012	759,838	779,645	1,156,072	904,565	672,252	525,908
2011	661,234	725,936	1,192,986	1,067,890	915,243	768,659
2010	529,116	759,113	1,140,340	1,002,806	691,515	600,223
2009	631,533	717,828	1,226,863	932,220	660,802	652,693
2008	679,048	809,921	1,195,076	1,041,042	718,439	623,626
2007	613,892	988,006	1,275,167	1,152,734	890,124	644,144
2006	602,545	765,063	1,303,124	1,075,231	796,610	633,795

	July total import units	Aug. total import units	Sep. total import units	Oct. total import units	Nov. total import units	Dec. total import units	Total import units
2020	474,885	472,736	476,449	503,817	581,859	515,468	6,308,969
2019	495,750	448,777	430,860	411,708	482,627	498,281	6,239,721
2018	452,637	430,168	393,334	481,847	479,022	465,912	6,182,082
2017	511,094	522,474	454,877	480,920	514,237	503,346	6,777,799
2016	460,740	464,093	509,475	438,628	518,622	484,729	6,849,387
2015	556,279	542,763	524,133	519,919	484,170	554,615	7,122,444
2014	572,129	504,218	543,409	502,832	540,165	534,548	7,734,364
2013	595,336	535,046	561,806	528,767	640,332	599,246	7,932,395
2012	586,024	629,284	631,719	642,217	649,625	562,295	8,499,444
2011	675,783	776,045	655,654	629,958	722,052	659,152	9,450,592
2010	562,581	582,646	663,734	546,459	719,973	603,440	8,401,946
2009	685,910	619,872	677,716	623,646	620,796	571,838	8,621,717
2008	646,395	612,531	729,659	770,349	625,626	582,061	9,033,773
2007	672,070	649,954	586,098	688,807	741,855	700,463	9,603,314
2006	643,767	724,797	673,445	684,487	767,415	668,893	9,339,172

Source : Ministry of Finance Japan (MOF) Trade Statistics of Japan
 (Final figures before 2019, Double confirmed figures in 2020)
 Japan Bicycle Promotion Institute Processing and Analysis

Chart M shows a graphic presentation of the fifteen-year history of total import units by month based on Table 14.

Chart M Fifteen year history of total Japanese bicycle import by month (units)
 (“Motorcycles with electric motor for propulsion” is not included)



Source : Ministry of Finance Japan (MOF) Trade Statistics of Japan
 Japan Bicycle Promotion Institute Processing and Analysis

Table 15 shows a fifteen-year history of Japanese bicycle unit import by category.

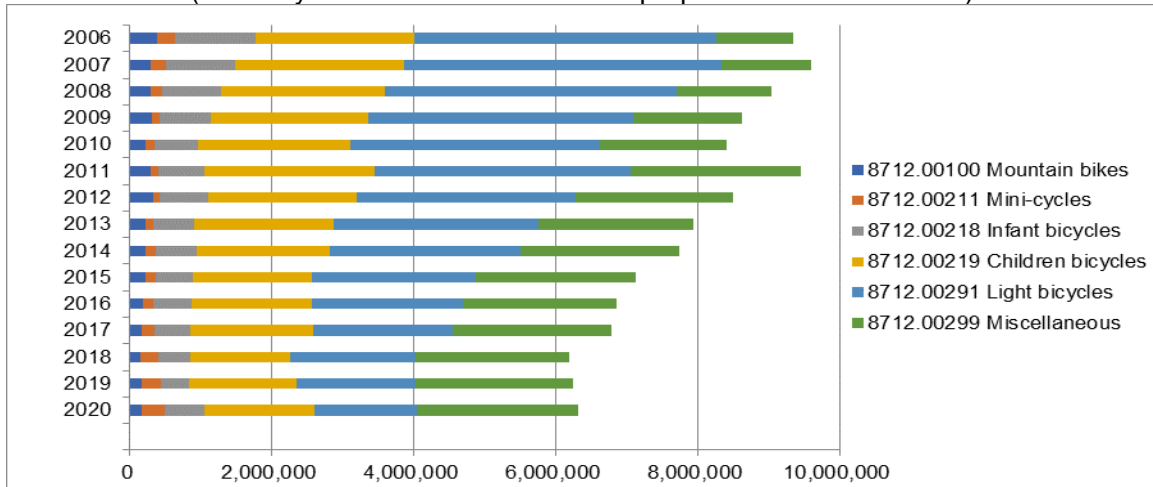
Table 15
 Fifteen-year history of Japanese bicycle unit import by categories
 (“Motorcycles with electric motor for propulsion” is not included)

	8712.00100 Mountain bikes	8712.00211 Mini-cycles	8712.00218 Infant bicycles	8712.00219 Children bicycles	8712.00291 Light bicycles	8712.00299 Miscellaneous	Total
2020	165,124	319,141	558,930	1,558,542	1,447,190	2,260,042	6,308,969
2019	160,977	273,416	405,711	1,510,586	1,670,668	2,218,363	6,239,721
2018	155,758	238,234	456,854	1,414,315	1,760,761	2,156,160	6,182,082
2017	168,007	186,440	503,297	1,729,446	1,962,119	2,228,490	6,777,799
2016	176,823	157,870	538,882	1,690,152	2,129,712	2,155,948	6,849,387
2015	219,152	142,150	520,523	1,675,477	2,318,196	2,246,946	7,122,444
2014	227,054	130,205	581,229	1,881,428	2,682,510	2,231,938	7,734,364
2013	219,848	99,363	585,485	1,966,906	2,881,192	2,179,601	7,932,395
2012	325,828	92,405	692,111	2,075,504	3,094,262	2,219,334	8,499,444
2011	288,094	110,599	658,735	2,387,853	3,608,216	2,397,095	9,450,592
2010	225,716	124,094	613,003	2,133,052	3,526,359	1,779,722	8,401,946
2009	300,708	118,241	718,801	2,210,631	3,744,364	1,528,972	8,621,717
2008	296,984	157,596	832,968	2,299,371	4,106,823	1,340,031	9,033,773
2007	289,270	213,917	986,539	2,368,441	4,481,866	1,263,281	9,603,314
2006	376,390	263,380	1,134,179	2,236,065	4,247,509	1,081,649	9,339,172

Source : Ministry of Finance Japan (MOF) Trade Statistics of Japan
 (Final figures before 2019, Double confirmed figures in 2020)
 Japan Bicycle Promotion Institute Processing and Analysis

Chart N shows these import histories.

Chart N
Fifteen-year history of Japanese bicycle unit import by category (units)
("Motorcycles with electric motor for propulsion" is not included)



Source : Ministry of Finance Japan (MOF) Trade Statistics of Japan
Japan Bicycle Promotion Institute Processing and Analysis

3 – 4 Main source country/area of Japanese bicycle import

Table 16 shows source countries and areas of 2020 Japanese bicycle import.

Table 16 Main source countries and areas of Japanese bicycle imports in 2020
("Motorcycles with electric motor for propulsion" is not included)

Source country/area	Total units	% share of total units	Total CIF Value (JPY thousand)	% share of total value	Average CIF unit value (JPY)
China	6,208,778	98.4	61,636,126	89.2	9,927
Taiwan	75,906	1.2	5,836,188	8.4	76,887
Others	24,285	0.4	1,607,088	2.3	66,176
Total	6,308,969	100.0	69,079,402	100.0	10,949

Source : Ministry of Finance Japan (MOF) Trade Statistics of Japan
(Double confirmed figures)

Japan Bicycle Promotion Institute Processing and Analysis Due to round off, Total may not match.

"China" continues to be the biggest source country. It captures 98.4% of total units, and 89.2% of total CIF value. The average CIF unit value is JPY 9,927. "Taiwan" follows "China", capturing 1.2% of total units, and 8.4% of total CIF value. The average CIF unit value is JPY 76,887. These two-combined captures 99.6% of total units and 97.7% of total CIF value.

Table 17 shows Japanese bicycle import from "China" by category.

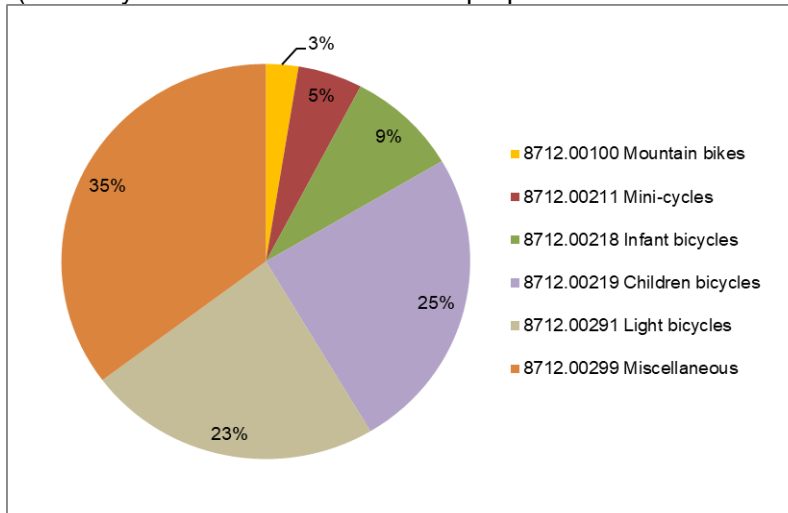
Table 17 Japanese bicycle import from “China” in 2020 by category
 (“Motorcycles with electric motor for propulsion” is not included)

HS number and category	Total units	Total CIF Value (JPY thousand)	Average CIF unit value (JPY)
8712.00100 Mountain bikes	159,576	2,432,173	15,241
8712.00211 Mini-cycles	317,174	3,515,881	11,085
8712.00218 Infant bicycles	549,731	3,540,101	6,440
8712.00219 Children bicycles	1,546,751	13,056,883	8,441
8712.00291 Light bicycles	1,446,710	13,732,142	9,492
8712.00299 Miscellaneous	2,188,836	25,358,946	11,586
Total	6,208,778	61,636,126	9,927

Source : Ministry of Finance Japan (MOF) Trade Statistics of Japan
 (Double confirmed figures)
 Japan Bicycle Promotion Institute Processing and Analysis

Chart O shows a graphic presentation of 2020 Japanese bicycle import unit share from “China” by category based on Table 17. “Miscellaneous” captures 35% share and “Children bicycles” follows to capture 25% share. Unit import volume from “China” is so huge; therefore, this chart looks like Chart H which shows Japanese total unit import share by category.

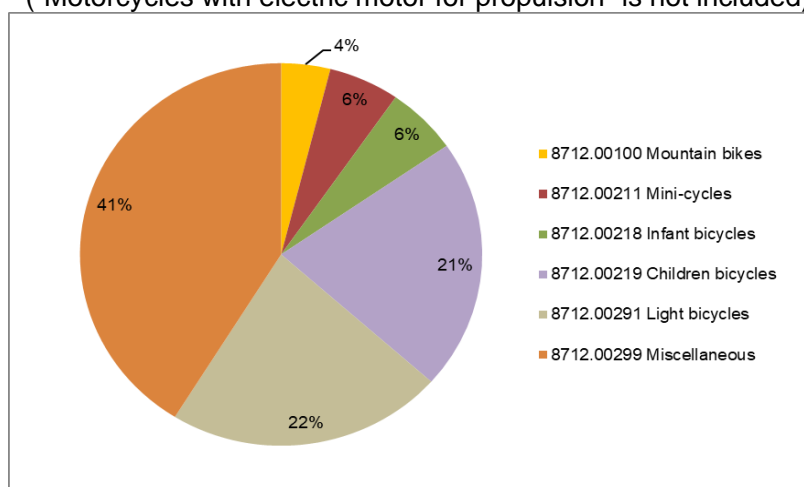
Chart O Japanese bicycle import from “China” in 2020: Unit share by category
 (“Motorcycles with electric motor for propulsion” is not included)



Source : Ministry of Finance Japan (MOF) Trade Statistics of Japan
 Japan Bicycle Promotion Institute Processing and Analysis

Chart P shows a graphic presentation of 2020 Japanese bicycle import value share from “China” by category also based on Table 17. “Miscellaneous” captures 41% share and “Light bicycles” follows capturing 22% share.

Chart P Japanese bicycle import from “China” in 2020: Value share by category (“Motorcycles with electric motor for propulsion” is not included)



Source : Ministry of Finance Japan (MOF) Trade Statistics of Japan
Japan Bicycle Promotion Institute Processing and Analysis

Then, Table 18 follows to show Japanese bicycle import from “Taiwan” by category. Average CIF unit value from Taiwan is JPY76,887, which is higher than Japanese Average Unit Production Value including “Electric power assist” JPY70,885.

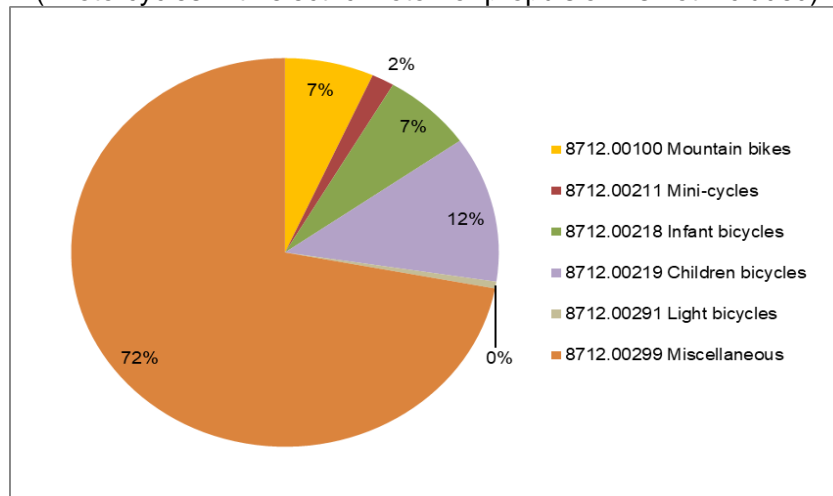
Table 18 Japanese bicycle import from “Taiwan” in 2020 by category (“Motorcycles with electric motor for propulsion” is not included)

HS number and category	Total units	Total CIF Value (JPY thousand)	Average CIF unit value (JPY)
8712.00100 Mountain bikes	5,108	181,811	35,593
8712.00211 Mini-cycles	1,291	54,786	42,437
8712.00218 Infant bicycles	5,183	28,506	5,500
8712.00219 Children bicycles	9,222	197,754	21,444
8712.00291 Light bicycles	431	22,378	51,921
8712.00299 Miscellaneous	54,671	5,350,953	97,876
Total	75,906	5,836,188	76,887

Source : Ministry of Finance Japan (MOF) Trade Statistics of Japan
(Double confirmed figures)
Japan Bicycle Promotion Institute Processing and Analysis

Chart Q shows a graphic presentation of 2020 Japanese bicycle import unit share from “Taiwan” by category based on Table 18. This chart looks totally different from Chart H which shows total import or Chart O which shows import from “China”. “Miscellaneous” captures 72% big share and “Children Bicycles” follows to capture 12% share. On the other hand, “Light bicycles” only captures very small share.

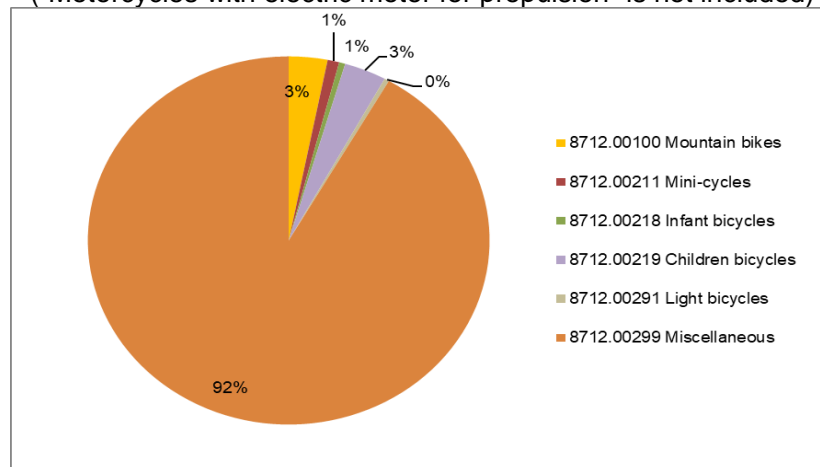
Chart Q Japanese bicycle import from “Taiwan” in 2020: Unit share by category (“Motorcycles with electric motor for propulsion” is not included)



Source : Ministry of Finance Japan (MOF) Trade Statistics of Japan
Japan Bicycle Promotion Institute Processing and Analysis

Moreover, Chart R shows a graphic presentation of 2020 Japanese bicycle import value share from “Taiwan” by category also based on Table 18. The characteristics appear more remarkably than the unit import share. “Miscellaneous” captures 92% share and “Mountain bikes” and “Children bicycles” follow capturing 3% share. The share of “Light bicycles” is very small.

Chart R Japanese bicycle import from “Taiwan” in 2020: Value share by category (“Motorcycles with electric motor for propulsion” is not included)



Source : Ministry of Finance Japan (MOF) Trade Statistics of Japan
Japan Bicycle Promotion Institute Processing and Analysis

Then, Table 19 shows source countries and areas of 2020 Japanese “Motorcycles with electric motor for propulsion” import compared to that of 2019 for reference.

Table 19 (Reference) Main source countries and areas of Japanese
“Motorcycles with electric motor for propulsion” import in 2020 compared to 2019

Source country/area	Total units	% share of total units	Total CIF Value (JPY thousand)	% share of total value	Average CIF unit value (JPY)
2020 China	483,033	98.1	17,083,591	91.3	35,367
2019 China	377,081	98.3	13,234,416	94.1	35,097
Variance %	105,952	-0.2	3,849,175	-2.9	270
2020 Taiwan	7,919	1.6	1,277,511	6.8	161,322
2019 Taiwan	5,435	1.4	508,590	3.6	93,577
Variance %	2,484	0.2	768,921	3.2	67,745
2020 Others	1,516	0.3	352,898	1.9	232,782
2019 Others	1,079	0.3	315,493	2.2	292,394
Variance %	437	0.0	37,405	-0.4	-59,612
2020 Total	492,468	100.0	18,714,000	100.0	38,000
2019 Total	383,595	100.0	14,058,499	100.0	36,649
Variance %	108,873	0.0	4,655,501	0.0	1,351

Source : Ministry of Finance Japan (MOF) Trade Statistics of Japan
(Final figures in 2019, Double confirmed figures in 2020)

Japan Bicycle Promotion Institute Processing and Analysis Due to round off, Total may not match.

4. Domestic unit volume

Almost all the Japanese bicycle export is used bicycle export to developing countries. Therefore, production units plus import units can be defined as domestic unit volume. Table 20 shows a fifteen-year history of domestic unit volume. 2020 domestic unit volume is 7,177,558, the thirteenth in the last fifteen years. And its domestic production ratio is 12.1%.

Table 20 Fifteen-year history of Japanese bicycle domestic unit volume
("Electric power assist bicycles" is included in unit production,
"Motorcycles with electric motor for propulsion" is not included in unit import)

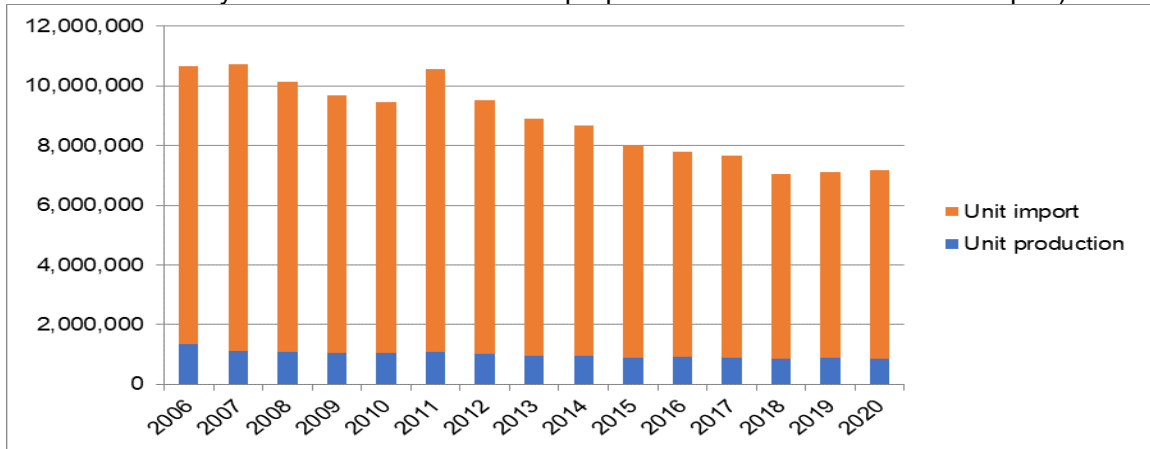
	Unit production	Unit import	Domestic unit volume	Domestic production ratio %
2020	868,589	6,308,969	7,177,558	12.1
2019	884,078	6,239,721	7,123,799	12.4
2018	859,850	6,182,082	7,041,932	12.2
2017	890,850	6,777,799	7,668,649	11.6
2016	939,025	6,849,387	7,788,412	12.1
2015	898,095	7,122,444	8,020,539	11.2
2014	951,548	7,734,364	8,685,912	11.0
2013	965,954	7,932,395	8,898,349	10.9
2012	1,012,314	8,499,444	9,511,758	10.6
2011	1,101,666	9,450,592	10,552,258	10.4
2010	1,056,951	8,401,946	9,458,897	11.2
2009	1,049,469	8,621,717	9,671,186	10.9
2008	1,094,932	9,033,773	10,128,705	10.8
2007	1,135,606	9,603,314	10,738,920	10.6
2006	1,334,512	9,339,172	10,673,684	12.5

Source : Ministry of Economy, Trade and Industry (METI) Current Production Statistics Survey
(Final figures)

Ministry of Finance Japan (MOF) Trade Statistics of Japan
(Final figures before 2019, Double confirmed figures in 2020)
Japan Bicycle Promotion Institute Processing and Analysis

Chart S is the graphic presentation of this history.

Chart S Fifteen-year history of domestic bicycle unit volume (units)
 (“Electric power assist bicycles” is included in unit production,
 “Motorcycles with electric motor for propulsion” is not included in unit import)



Source : Ministry of Economy, Trade and Industry (METI) Current Production Statistics Survey
 Ministry of Finance Japan (MOF) Trade Statistics of Japan
 Japan Bicycle Promotion Institute Processing and Analysis

5. Japanese bicycle export

Almost all the Japanese bicycle export is used bicycle export to developing countries. Table 21 shows main destination countries and areas of Japanese bicycle export in 2020. Average FOB unit value clearly proves that the bicycle export is used bicycle export. In this part of the report, “Motorcycles with electric motor for propulsion” is excluded.

Table 21 Japanese bicycle export in 2020 by destination countries and areas

Destination country/area	Total units	Total FOB value (JPY thousand)	Average FOB unit value (JPY)
Ghana	606,431	917,283	1,513
Myanmar	427,464	594,102	1,390
Iraq	418,524	767,655	1,834
Philippines	295,327	518,694	1,756
Cambodia	284,911	662,396	2,325
Tanzania	243,228	391,666	1,610
Afghanistan	197,211	317,764	1,611
UAE	135,534	233,159	1,720
Nigeria	80,372	148,973	1,854
Turkey	46,419	81,375	1,753
Others	196,444	474,944	2,418
Total	2,931,865	5,108,011	1,742

Source : Ministry of Finance Japan (MOF) Trade Statistics of Japan
 (Double confirmed figures)
 Japan Bicycle Promotion Institute Processing and Analysis

Table 22 shows a fifteen-year history of Japanese bicycle export from 2006 to 2020. In 2020, total units are the ninth largest and total value is the sixth highest in the last fifteen years. The average unit value in 2020 is JPY 1,742, the second highest in the last fifteen years.

Table 22 Fifteen-year history of Japanese bicycle export: All categories

	Total units	Total FOB value (JPY thousand)	Average FOB unit value (JPY)
2020	2,931,865	5,108,011	1,742
2019	3,109,929	5,386,972	1,732
2018	3,068,426	5,164,377	1,683
2017	3,162,452	5,085,776	1,608
2016	3,160,819	5,389,032	1,705
2015	3,558,029	6,475,518	1,820
2014	3,301,196	5,128,410	1,554
2013	3,142,282	4,320,542	1,375
2012	2,980,626	3,863,945	1,296
2011	2,676,620	3,505,035	1,310
2010	2,393,342	3,180,711	1,329
2009	2,214,528	3,000,068	1,355
2008	2,283,080	3,772,868	1,653
2007	2,095,644	3,028,212	1,445
2006	1,340,136	1,467,329	1,095

Source : Ministry of Finance Japan (MOF) Trade Statistics of Japan
(Final figures before 2019, Double confirmed figures in 2020)
Japan Bicycle Promotion Institute Processing and Analysis

###