

## Japanese bicycle production, import and export (Nine-Month Year to Date 2019)

### 1. Preface

The purpose of this report is to show the Japanese bicycle market trend through comprehensive investigation of the Japanese bicycle production, import and export. First, the production of the domestic bicycle manufacturers will be clarified using Ministry of Economy, Trade and Industry (METI) Current Production Statistics, and total production activities including shipment, inventories and time series trend will be explained. Second, due to the current big share of import bicycles in the Japanese bicycle market, bicycle import will be investigated by categories and by time series using Ministry of Finance Japan (MOF) Trade Statistics, and general bicycle market trend will be grasped. Then, comprehensive Japanese bicycle market trend including bicycle production becomes clear. Finally, Japanese bicycle export which is now mostly used bicycle export will be briefly referenced.

During the nine-month Year to Date 2019, total unit production decreases when compared to the same period of the previous year; however, total value production increased compared to the same period of 2018. As to import, total unit increases; however, total value decreases when compared to the same period of 2018. As a result, the nine-month YTD 2019 domestic unit volume which consists of production units and import units is the fourteenth in the last fifteen years.

### 2. Japanese bicycle production

#### 2 – 1 Outline of nine-month year to date 2019 bicycle production

According to Ministry of Economy, Trade and Industry (METI) Current Production Statistics Survey, Japanese complete bicycle production in nine-month year to date 2019 is 631,181 units, and JPY 40,468,490 thousand. Table 1 shows that total unit production decreases 0.6%, and total production value increases 2.0%, compared to the same period of the previous year. Average production unit value in nine-month year to date 2019 is up 2.6% from JPY 62,505 in 2018 to JPY 64,116 in 2019.

Table 1 Nine-Month Year to Date 2019 Japanese bicycle production

	Total Units	Total Production Value (JPY thousand)	Average Unit Value (JPY)
9-month YTD 2019	631,181	40,468,490	64,116
9-month YTD 2018	634,712	39,672,442	62,505
Variance	-3,531	796,048	1,611
Variance%	-0.6%	2.0%	2.6%

Source : Ministry of Economy, Trade and Industry (METI) Current Production Statistics Survey  
(2018 figure is revised) Japan Bicycle Promotion Institute Processing and Analysis  
Due to round off, Total may not match.

Table 2 shows the detail by product category of Japanese bicycle production during the nine-month year to date 2019 compared to the same period of 2018.

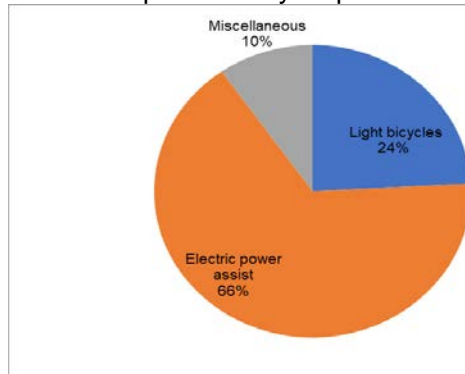
Table 2 Production by category:  
 Nine-Month Year to Date 2019 compared to Nine-Month Year to Date 2018

9-month YTD Category	2019		2018		Variance			
	units	Value (JPY thousand)	units	Value (JPY thousand)	units	%	Value (JPY thousand)	%
Light bicycles	152,609	3,788,966	153,934	3,747,152	-1,325	-0.9	41,814	1.1
Electric power assist	417,188	35,367,483	421,888	34,587,864	-4,700	-1.1	779,619	2.3
Miscellaneous	61,384	1,312,041	58,890	1,337,426	2,494	4.2	-25,385	-1.9
<b>Total</b>	<b>631,181</b>	<b>40,468,490</b>	<b>634,712</b>	<b>39,672,442</b>	<b>-3,531</b>	<b>-0.6</b>	<b>796,048</b>	<b>2.0</b>

Source : Ministry of Economy, Trade and Industry (METI) Current Production Statistics Survey  
 (2018 figure is revised) Japan Bicycle Promotion Institute Processing and Analysis  
 Due to round off, Total may not match.

Chart A shows a graphic presentation of nine-month year to date 2019 Japanese bicycle unit production share by category based on Table 2. “Electric power assist” captures 66% share, and “Light bicycles” follows capturing 24% share.

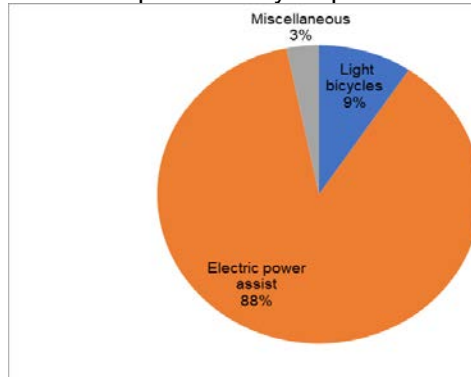
Chart A  
 Nine-Month YTD2019 Japanese bicycle production: % unit share by category



Source : Ministry of Economy, Trade and Industry (METI) Current Production Statistics Survey, Japan Bicycle Promotion Institute Processing and Analysis

Chart B shows a graphic presentation of nine-month year to date 2019 Japanese bicycle production value share by category also based on Table 2. “Electric power assist” captures 88% share.

Chart B  
 Nine-Month YTD2019 Japanese bicycle production: % value share by category



Source : Ministry of Economy, Trade and Industry (METI) Current Production Statistics Survey, Japan Bicycle Promotion Institute Processing and Analysis

Table 3 shows average production unit value by product category in nine-month year to date 2019 compared to the same period of 2018. “Light bicycles” and “Electric power assist” go up, on the other hand, “Miscellaneous” shows down.

Table 3 Average Unit Value by product category:  
Nine-Month Year to Date 2019 compared to Nine-Month Year to Date 2018

Category	Average Unit Value (JPY) 9-month YTD 2019	Average Unit Value (JPY) 9-month YTD 2018	Variance (JPY)	Variance (%)
Light bicycles	24,828	24,343	485	2.0
Electric power assist	84,776	81,984	2,792	3.4
Miscellaneous	21,374	22,711	-1,336	-5.9
<b>Total</b>	<b>64,116</b>	<b>62,505</b>	<b>1,611</b>	<b>2.6</b>

Source : Ministry of Economy, Trade and Industry (METI) Current Production Statistics Survey  
(2018 figure is revised) Japan Bicycle Promotion Institute Processing and Analysis  
Due to round off, Total may not match.

Table 4 shows unit production, production value and average unit value of “Electric power assist bicycles” by month. Unit production shows decrease in most months when compared to the same period of the previous year; on the other hand, production value shows increase in most months when compared to the same period of 2018.

Table 4  
Production of “Electric power assist bicycles” by month: 2019 compared to 2018

	2019			2018			Variance of unit production	Variance of production value (JPY thousand)	Variance of average unit value (JPY)
	Unit production	Production value (JPY thousand)	Average unit value (JPY)	Unit production	Production value (JPY thousand)	Average unit value (JPY)			
January	45,893	4,149,189	90,410	46,507	3,774,633	81,163	-614	374,556	9,247
February	52,707	4,741,124	89,952	54,734	4,613,710	84,293	-2,027	127,414	5,659
March	59,872	4,968,034	82,978	60,222	4,722,509	78,418	-350	245,525	4,559
April	51,496	4,234,450	82,229	48,918	3,725,556	76,159	2,578	508,894	6,070
May	46,439	4,024,551	86,663	48,452	4,019,285	82,954	-2,013	5,266	3,709
June	38,373	3,208,779	83,621	46,684	3,856,544	82,610	-8,311	-647,765	1,011
July	44,116	3,724,531	84,426	42,675	3,527,838	82,668	1,441	196,693	1,758
August	38,424	3,265,004	84,973	35,636	3,061,485	85,910	2,788	203,519	-937
September	39,868	3,051,821	76,548	38,060	3,286,304	86,345	1,808	-234,483	-9,797
<b>YTD</b>	<b>417,188</b>	<b>35,367,483</b>	<b>84,776</b>	<b>421,888</b>	<b>34,587,864</b>	<b>81,984</b>	<b>-4,700</b>	<b>779,619</b>	<b>2,792</b>

Source : Ministry of Economy, Trade and Industry (METI) Current Production Statistics Survey  
(2018 figure is revised) Japan Bicycle Promotion Institute Processing and Analysis  
Due to round off, Total may not match.

## 2 – 2 Comprehensive production, shipments and inventory status of the Japanese bicycle manufacturers

Table 5 shows comprehensive manufacturing and sales condition including production, receipts, shipments (sales and others) and month end inventory in nine-month year to date 2019 compared to the same period of 2018.

Table 5 Production, shipments and inventory of the Japanese bicycle manufacturers:  
Nine-Month Year to Date 2019 compared to Nine-Month Year to Date 2018

Category	Production		Receipts (Units)	Shipments			September end Inventory (Units)
	Units	Value (JPY thousand)		Sales		Others (Units)	
				Units	Value (JPY thousand)		
9-month YTD 2019 Light bicycles	152,609	3,788,966	428,705	482,491	7,682,047	126,717	25,754
9-month YTD 2018 Light bicycles	153,934	3,747,152	403,199	449,613	7,424,782	142,708	27,811
Variance %	-0.9	1.1	6.3	7.3	3.5	-11.2	-7.4
9-month YTD 2019 Electric power assist	417,188	35,367,483	321,935	537,592	44,750,811	241,361	28,115
9-month YTD 2018 Electric power assist	421,888	34,587,864	395,463	505,044	41,138,271	293,545	67,230
Variance %	-1.1	2.3	-18.6	6.4	8.8	-17.8	-58.2
9-month YTD 2019 Miscellaneous	61,384	1,312,041	214,597	264,595	5,073,058	16,573	48,929
9-month YTD 2018 Miscellaneous	58,890	1,337,426	244,261	251,762	5,804,439	46,359	43,386
Variance %	4.2	-1.9	-12.1	5.1	-12.6	-64.3	12.8
9-month YTD 2019 Total	631,181	40,468,490	965,237	1,284,678	57,505,916	384,651	102,798
9-month YTD 2018 Total	634,712	39,672,442	1,042,923	1,206,419	54,367,492	482,612	138,427
Variance %	-0.6	2.0	-7.4	6.5	5.8	-20.3	-25.7

Source : Ministry of Economy, Trade and Industry (METI) Current Production Statistics Survey  
(2018 figure is revised) Japan Bicycle Promotion Institute Processing and Analysis  
Due to round off, Total may not match.

Total receipts units in nine-month year to date 2019 decrease 7.4% compared to nine-month year to date 2018.

Total units of shipments sales in nine-month year to date 2019 increase 6.5% compared to that of nine-month year to date 2018.

Total value of shipments sales up by 5.8% in nine-month year to date 2019 compared to the same period of 2018. "Light bicycles" and "Electric power assist" show up, but "Miscellaneous" shows down.

Total units of shipments others in nine-month year to date 2019 decreases by 20.3% compared to the same period of 2018. All three categories show decrease. Shipments others are principally the commissioned products shipped to the consigners.

Total month end inventory in September 2019 is 102,798 units, 25.7% decrease compared to September 2018.

### 2 – 3 Fifteen-year history of nine-month year to date bicycle production

Table 6 shows a fifteen-year history of nine-month year to date Japanese bicycle production, shipments and September end inventory from 2005 to 2019.

Table 6 Fifteen-year history of bicycle production and shipments:  
 Nine-Month Year to Date September end inventory by Japanese bicycle manufactures

9-month YTD	Production			Shipments			September end Inventory (Units)
	Units	Value*	Average Unit Value (JPY)	Units	Value*	Average Unit Value (JPY)	
2019	631,181	40,468,490	64,116	1,284,678	57,505,916	44,763	102,798
2018	634,712	39,672,442	62,505	1,206,419	54,367,492	45,065	138,427
2017	649,945	40,349,190	62,081	1,266,869	52,332,618	41,309	109,885
2016	704,637	40,259	57,134	1,271,904	46,619	36,653	125,811
2015	661,545	34,110	51,561	1,226,711	41,376	33,729	116,411
2014	713,781	35,399	49,594	1,358,934	42,020	30,921	120,243
2013	714,851	31,472	44,026	1,439,288	41,178	28,610	172,231
2012	781,456	31,333	40,096	2,133,627	47,298	22,168	200,587
2011	831,406	32,806	39,458	2,422,142	51,603	21,305	184,768
2010	797,261	28,240	35,421	2,423,522	46,420	19,154	157,379
2009	792,224	25,658	32,387	2,462,655	44,584	18,104	172,896
2008	810,141	20,778	25,647	2,752,694	41,621	15,120	154,625
2007	854,776	18,946	22,165	2,877,110	37,740	13,117	168,033
2006	1,031,806	19,538	18,936	3,173,847	37,993	11,971	190,393
2005	1,520,226	24,056	15,824	4,142,301	45,511	10,987	273,655

Source : Ministry of Economy, Trade and Industry (METI) Current Production Statistics Survey  
 (Before 2018 figure is revised)

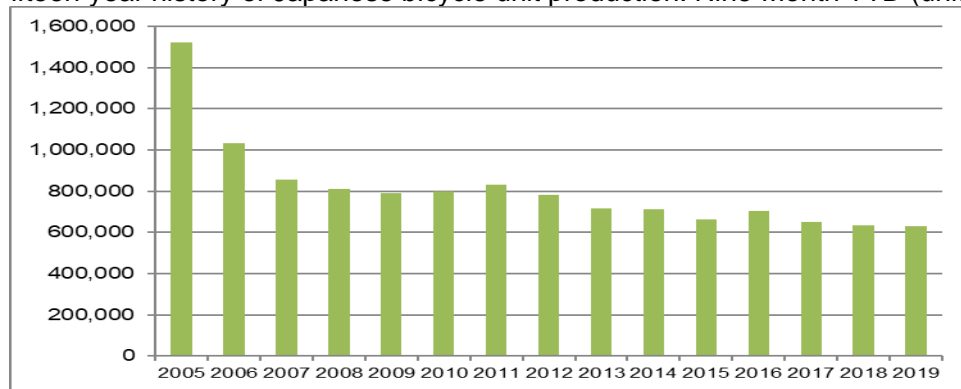
Japan Bicycle Promotion Institute Processing and Analysis

\*Before 2016 JPY million, after 2017 JPY thousand

Production units in nine-month year to date 2019 are the lowest in the last fifteen years. However, production value in this period is the highest. With these facts, the average production unit value is the highest in fifteen years. Also, shipments units in nine-month year to date 2019 are the eleventh in fifteen years, and shipments value in nine-month year to date 2019 is the highest, make the average shipments unit value in nine-month year to date 2019 the second highest. When compared average production unit value to average shipments unit value, average production unit value has been higher than average shipments unit value for fifteen consecutive years. Month end inventory of September 2019 is 102,798 units, the lowest in the last fifteen years.

Chart C shows a graphic presentation of this fifteen-year history of Japanese bicycle unit production during the nine-month year to date from 2005 to 2019 based on Table 6. Unit production is stagnated.

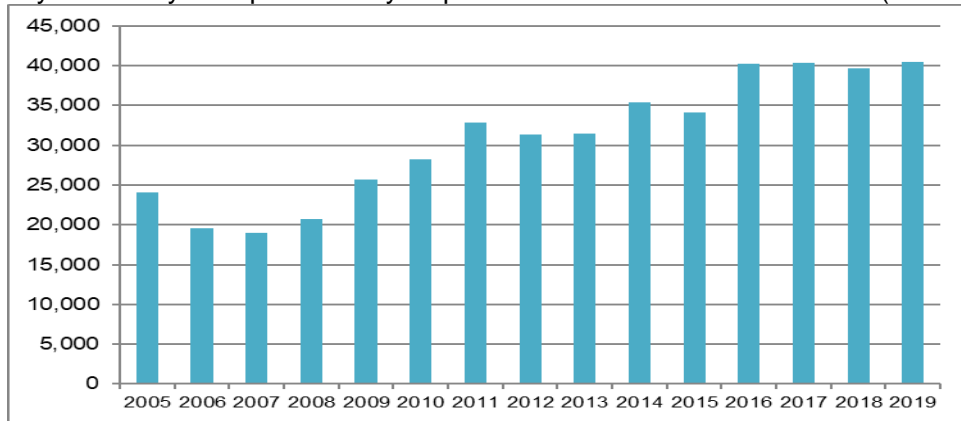
Chart C  
 Fifteen-year history of Japanese bicycle unit production: Nine-Month YTD (units)



Source : Ministry of Economy, Trade and Industry (METI) Current Production Statistics Survey,  
 Japan Bicycle Promotion Institute Processing and Analysis

Chart D shows a graphic presentation of the fifteen-year history of Japanese bicycle production value during the nine-month year to date from 2005 to 2019 also based on Table 6.

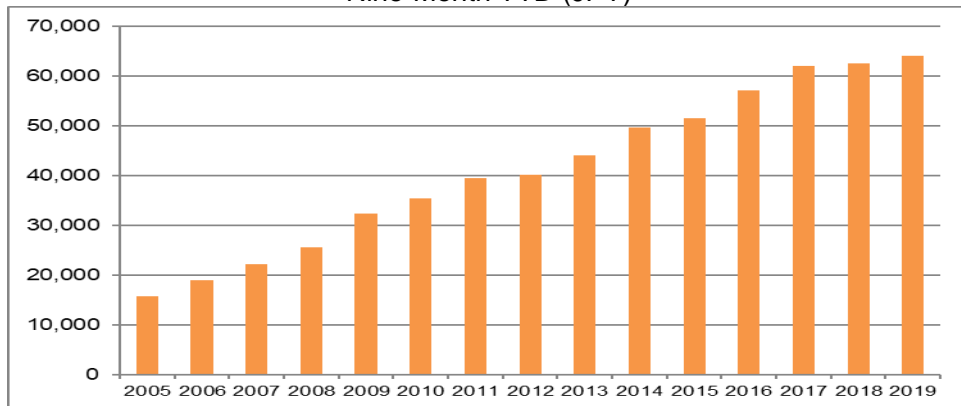
Chart D  
Fifteen-year history of Japanese bicycle production value: Nine-Month YTD (JPY million)



Source : Ministry of Economy, Trade and Industry (METI) Current Production Statistics Survey, Japan Bicycle Promotion Institute Processing and Analysis

Chart E shows a graphic presentation of the fifteen-year history of Japanese bicycle production average unit value during the nine-month year to date from 2005 to 2019 also based on Table 6. Production average unit value shows up in trend.

Chart E  
Fifteen-year history of Japanese bicycle production average unit value: Nine-Month YTD (JPY)



Source : Ministry of Economy, Trade and Industry (METI) Current Production Statistics Survey, Japan Bicycle Promotion Institute Processing and Analysis

Table 7 shows the fifteen-year history of the total unit production by month.

Table 7 Fifteen-year history of total production units by month (units)

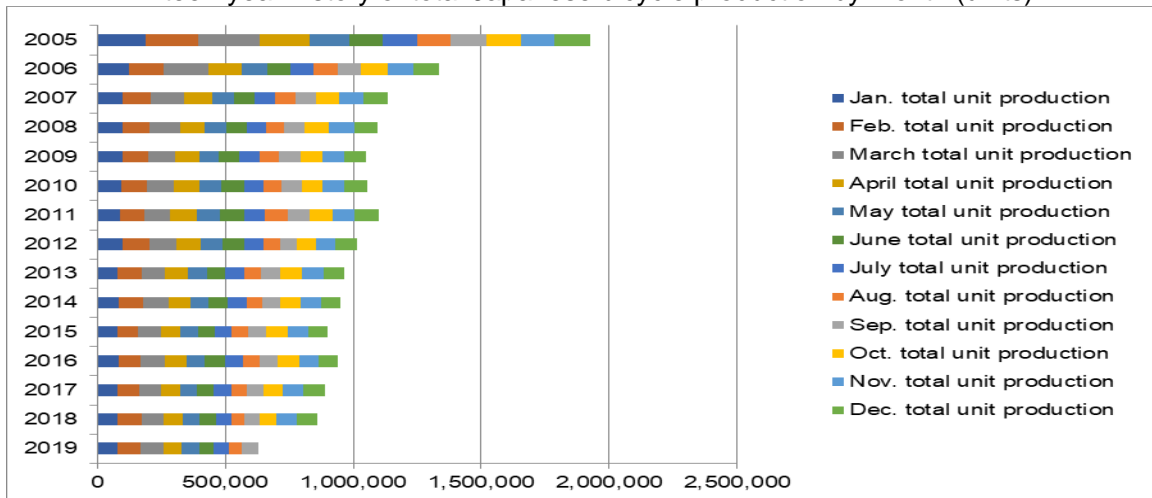
	Jan. total unit production	Feb. total unit production	March total unit production	April total unit production	May total unit production	June total unit production
2019	76,039	91,061	89,164	74,467	66,246	55,254
2018	78,463	93,312	86,051	76,370	65,715	63,702
2017	79,215	86,276	82,628	74,710	63,706	68,896
2016	82,586	88,069	94,670	81,062	72,186	78,781
2015	78,891	81,242	89,722	75,857	66,218	68,133
2014	84,512	93,408	100,416	83,216	72,121	74,255
2013	79,022	92,667	93,062	88,877	75,906	71,711
2012	96,874	105,350	106,202	95,001	85,528	83,915
2011	86,445	98,081	98,935	107,181	90,542	92,009
2010	93,923	99,424	106,524	98,097	87,516	86,269
2009	96,944	99,314	106,639	94,506	76,287	80,900
2008	97,728	104,912	121,903	96,456	82,921	78,520
2007	99,537	108,413	130,721	108,017	86,039	81,714
2006	124,909	133,470	177,599	128,017	97,944	93,522
2005	186,677	207,574	239,561	197,996	151,547	129,232

	July total unit production	Aug. total unit production	Sep. total unit production	Oct. total unit production	Nov. total unit production	Dec. total unit production	Total unit production
2019	59,954	54,191	64,805				631,181
2018	58,056	53,849	59,194	66,085	77,433	83,025	861,255
2017	66,260	60,279	67,975	74,071	81,506	85,328	890,850
2016	71,533	64,278	71,472	82,749	76,539	75,100	939,025
2015	64,647	62,481	74,354	82,311	79,144	75,095	898,095
2014	74,981	62,167	68,705	81,603	78,727	77,437	951,548
2013	72,325	66,889	74,392	82,781	84,937	83,385	965,954
2012	74,820	65,045	68,721	73,476	73,695	83,687	1,012,314
2011	83,200	86,553	88,460	86,528	87,020	96,712	1,101,666
2010	75,897	72,056	77,555	82,694	86,498	90,498	1,056,951
2009	80,068	76,206	81,360	88,312	85,103	83,830	1,049,469
2008	76,552	70,488	80,661	95,816	98,763	90,212	1,094,932
2007	79,147	79,509	81,679	91,745	93,341	95,744	1,135,606
2006	87,738	94,248	94,359	105,347	99,636	97,723	1,334,512
2005	138,579	130,081	138,979	135,527	132,069	138,614	1,926,436

Source : Ministry of Economy, Trade and Industry (METI) Current Production Statistics Survey, Japan Bicycle Promotion Institute Processing and Analysis (Before 2018 figure is revised)

Chart F shows a graphic presentation of the fifteen-year history of total production units by month based on Table 7. This chart shows that the bicycle production is carried out relatively equally every month.

Chart F  
Fifteen-year history of total Japanese bicycle production by month (units)



Source : Ministry of Economy, Trade and Industry (METI) Current Production Statistics Survey, Japan Bicycle Promotion Institute Processing and Analysis

Table 8 shows a fifteen-year history of nine-month year to date Japanese bicycle unit production by category.

Table 8 Fifteen-year history of Nine-Month Year to Date Japanese bicycle unit production by categories (unit)

	Light bicycles	Electric power assist	Miscellaneous	Total
2019	152,609	417,188	61,384	631,181
2018	153,934	421,888	58,890	634,712
2017	167,191	419,792	62,962	649,945
2016	204,316	419,974	80,347	704,637
2015	226,405	346,678	88,462	661,545
2014	240,430	373,612	99,739	713,781
2013	276,806	333,121	104,924	714,851
2012	370,478	305,740	105,238	781,456
2011	396,759	325,571	109,076	831,406
2010	401,719	270,666	124,876	797,261
2009	409,556	242,602	140,066	792,224
2008	470,423	207,668	132,050	810,141
2007	516,798	198,460	139,518	854,776
2006	671,357	181,343	179,106	1,031,806
2005	1,036,648	172,502	311,076	1,520,226

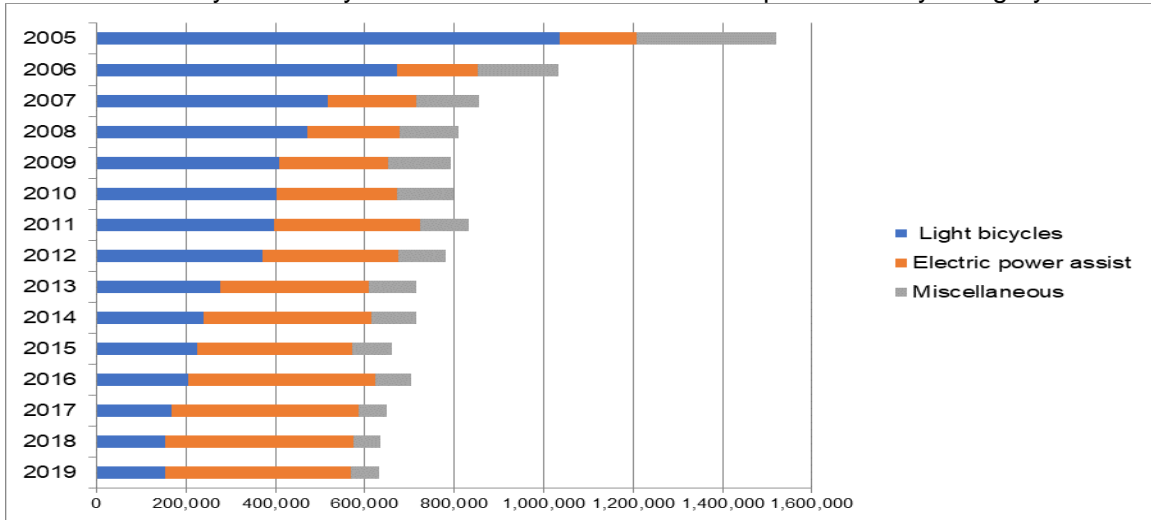
From 2011, "Children & Infant bicycles", "Mini-cycles", "Mountain bikes" and "Special bicycles" have been combined into "Miscellaneous". "Miscellaneous" between 2004 and 2010 include these four categories.

Source : Ministry of Economy, Trade and Industry (METI) Current Production Statistics Survey, Japan Bicycle Promotion Institute Processing and Analysis

Chart G shows a graphic presentation of the fifteen-year history of nine-month year to date unit production by category based on Table 8. This chart shows that "Light bicycles" are decreasing, and "Electric power assist" is increasing.



Chart G  
Fifteen-year history of Nine-Month Year to Date unit production by category



Source : Ministry of Economy, Trade and Industry (METI) Current Production Statistics Survey, Japan Bicycle Promotion Institute Processing and Analysis

### 3. Japanese bicycle import

Bicycle import by category is mentioned below. To begin with, import categories and HS numbers in Japan are classified as follows. “Electric power assist bicycles” is not classified as a single category and considered to be included in the category of “Motorcycles with electric motor for propulsion” in Trade Statistics. Please note that “Motorcycles with electric motor for propulsion” includes all electric motorcycles.

Table 9 Import categories and HS numbers

HS number and product category	Bicycle type
8712.00100 Mountain bikes	<ul style="list-style-type: none"> <li>• MTB(includes V brake or disk brake equipped)</li> <li>• Cross bikes</li> </ul>
8712.00211 Mini-cycles	<ul style="list-style-type: none"> <li>• Mini-cycles</li> <li>• Small wheel foldable bicycles</li> <li>• BMX</li> </ul>
8712.00218 Infant bicycles	<ul style="list-style-type: none"> <li>• Infant bicycles(12 – 16 inch)</li> <li>• Toy bicycles(12 inch two wheel)</li> <li>• Unicycles(12 – 16 inch)</li> </ul>
8712.00219 Children bicycles	<ul style="list-style-type: none"> <li>• Children bicycles(18 – 24 inch)</li> <li>• Junior MTB(18 – 24 inch)</li> <li>• Unicycles(18 – 24 inch)</li> </ul>
8712.00291 Light bicycles	<ul style="list-style-type: none"> <li>• Light bicycles(excludes outer derailleur equipped)</li> <li>• Single speed, sports use bicycles equipped with inner derailleur.</li> </ul>
8712.00299 Miscellaneous	<ul style="list-style-type: none"> <li>• Sports use bicycles</li> <li>• Light bicycles equipped with outer derailleur</li> <li>• Junior MTB(26 inch)</li> </ul>
8711.60000 Motorcycles with electric motor for propulsion	<ul style="list-style-type: none"> <li>• Electric motor cycles and electric power assist bicycles considered to be included.</li> </ul>

Source : Japan Bicycle Promotion Institute

### 3 – 1 Outline of nine-month year to date 2019 bicycle import

Table 10 shows Japanese bicycle import of all product categories excluding “Motorcycles with electric motor for propulsion” in nine-month year to date 2019 compared to the same period of 2018. Unit total is 4,847,105, 1.9% increase compared to the same period of 2018. On the other hand, total CIF value is JPY55,272,325 thousands, decreases by 1.8% compared to the same period of 2018, resulted in average CIF unit value of JPY11,403, 3.6% decrease.

The currency exchange rate is investigated. The average dollar-yen exchange rate during nine-month year to date 2018 was US\$1=JPY109.65; however, it gets US\$1=JPY109.28 in nine-month year to date 2019(Refer chief custom inspector published rate).

Table 10 Japanese bicycle import:  
Nine-Month Year to Date 2019 compared to Nine-Month Year to Date 2018  
 (“Motorcycles with electric motor for propulsion” is not included)

	Total units	Total CIF Value (JPY thousand)	Average CIF unit value (JPY)
9-month YTD 2019	4,847,105	55,272,325	11,403
9-month YTD 2018	4,755,301	56,263,519	11,832
Variance	91,804	-991,194	-429
Variance %	1.9	-1.8	-3.6

Source : Ministry of Finance Japan (MOF) Trade Statistics of Japan,  
Japan Bicycle Promotion Institute Processing and Analysis

Table 10 Annex shows nine-month year to date 2019 import of “Motorcycles with electric motor for propulsion” compared to the same period of 2018 for reference. Both unit and value show increase.

Table 10 Annex (Reference) Japanese import of “Motorcycles with electric motor for  
propulsion”

Nine-Month Year to Date 2019 compared to Nine-Month Year to Date 2018

	Total units	Total CIF Value (JPY thousand)	Average CIF unit value (JPY)
9-month YTD 2019	266,095	9,791,603	36,797
9-month YTD 2018	234,246	9,135,154	38,998
Variance	31,849	656,449	-2,201
Variance %	13.6	7.2	-5.6

Source : Ministry of Finance Japan (MOF) Trade Statistics of Japan,  
Japan Bicycle Promotion Institute Processing and Analysis

### 3 – 2 Nine-month year to date 2019 bicycle import by category

Table 11 shows nine-month year to date 2019 Japanese bicycle import by category.

Table 11  
Japanese bicycle imports in Nine-Month Year to Date 2019 by category

HS number and category	Total units	Total CIF Value (JPY thousand)	Average CIF unit value (JPY)
8712.00100 Mountain bikes	122,009	2,160,843	17,711
8712.00211 Mini-cycles	209,819	2,646,974	12,616
8712.00218 Infant bicycles	306,165	2,271,959	7,421
8712.00219 Children bicycles	1,166,903	10,511,880	9,008
8712.00291 Light bicycles	1,286,592	11,897,929	9,248
8712.00299 Miscellaneous	1,755,617	25,782,740	14,686
Total	4,847,105	55,272,325	11,403

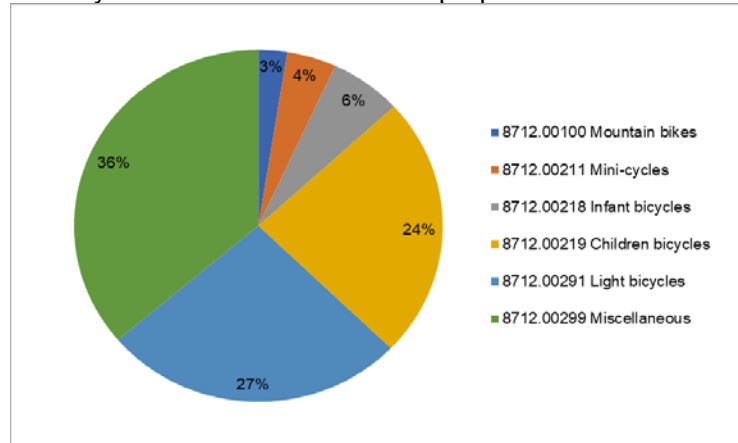
8711.60000 Motorcycles with electric motor for propulsion	266,095	9,791,603	36,797
---	---------	-----------	--------

Source : Ministry of Finance Japan (MOF) Trade Statistics of Japan,  
Japan Bicycle Promotion Institute Processing and Analysis

The average CIF unit value of HS8712.00100 “Mountain bikes” is JPY 17,711, the highest among the categories except for “Motorcycles with electric motor for propulsion”. The average CIF unit value of HS8712.00291 “Light bicycles” is JPY9,248, and its unit volume is the second biggest, following HS8712.00299 “Miscellaneous” which includes sports use bicycles and light bicycles equipped with outer derailleurs. The unit volume and total CIF value of HS8712.00299 “Miscellaneous” are the highest among the categories. Its average CIF unit value is JPY 14,686.

Chart H shows a graphic presentation of nine-month year to date 2019 Japanese bicycle import unit share by category based on Table 11. “Miscellaneous” captures 36% share and “Light bicycles” captures 27% share as well.

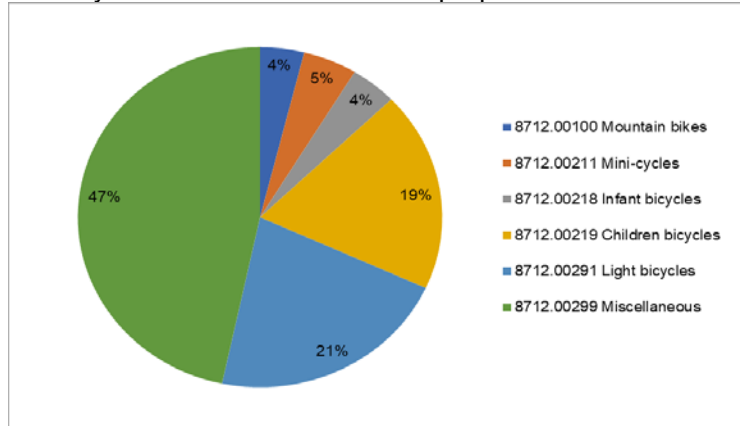
Chart H  
Nine-Month YTD2019 Japanese bicycle import: Unit share by category  
 (“Motorcycles with electric motor for propulsion” is not included)



Source : Ministry of Finance Japan (MOF) Trade Statistics of Japan,  
Japan Bicycle Promotion Institute Processing and Analysis

Chart I shows a graphic presentation of nine-month year to date 2019 Japanese bicycle import value share by category also based on Table 11. “Miscellaneous” captures 47% and “Light bicycles” captures 21% share.

Chart I  
 Nine-Month YTD2019 Japanese bicycle import: Value share by category  
 (“Motorcycles with electric motor for propulsion” is not included)



Source : Ministry of Finance Japan (MOF) Trade Statistics of Japan,  
 Japan Bicycle Promotion Institute Processing and Analysis

Table 12 shows a nine-month year to date 2019 Japanese bicycle import by category compared to the same period of the previous year. “Mini-cycles” and “Children bicycles” show increase both in unit and value. On the other hand, “Infant bicycles” and “Light bicycles” show decrease in both unit and value.

Table 12 Nine-Month Year to Date 2019 Japanese bicycle import by category compared to Nine-Month Year to Date 2018

9-month YTD Category	2019		2018		Variance %	
	units	Total CIF value (JPY thousand)	units	Total CIF value (JPY thousand)	Units	CIF value
8712.00100 Mountain bikes	122,009	2,160,843	120,388	2,329,044	1.3%	-7.2%
8712.00211 Mini-cycles	209,819	2,646,974	181,671	2,207,116	15.5%	19.9%
8712.00218 Infant bicycles	306,165	2,271,959	329,774	2,449,411	-7.2%	-7.2%
8712.00219 Children bicycles	1,166,903	10,511,880	1,097,099	10,232,960	6.4%	2.7%
8712.00291 Light bicycles	1,286,592	11,897,929	1,320,949	12,514,060	-2.6%	-4.9%
8712.00299 Miscellaneous	1,755,617	25,782,740	1,705,420	26,530,928	2.9%	-2.8%
Total	4,847,105	55,272,325	4,755,301	56,263,519	1.9%	-1.8%
Average unit value (JPY)		11,403		11,832		-3.6%
8711.60000 Motorcycles with electric motor for propulsion	266,095	9,791,603	234,246	9,135,154	13.6%	7.2%
Average unit value (JPY)		36,797		38,998		-5.6%

Source : Ministry of Finance Japan (MOF) Trade Statistics of Japan,  
 Japan Bicycle Promotion Institute Processing and Analysis

### 3 – 3 Fifteen year history of nine-month year to date bicycle import

Table 13 shows a fifteen-year history of nine-month year to date Japanese bicycle import.

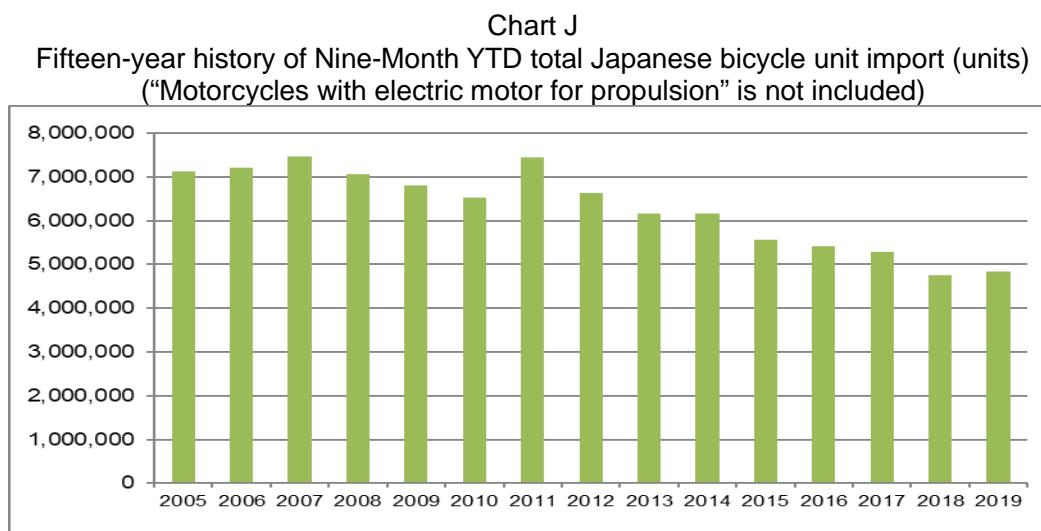
Table 13 Fifteen-year history of Nine-Month Year to Date Japanese bicycle import:  
All categories (“Motorcycles with electric motor for propulsion” is not included)

9-month YTD	Total import units	Total CIF value (JPY thousand)	Average CIF unit value (JPY)
2019	4,847,105	55,272,325	11,403
2018	4,755,301	56,263,519	11,832
2017	5,279,296	57,550,264	10,901
2016	5,407,408	60,448,602	11,179
2015	5,563,740	72,368,904	13,007
2014	6,156,819	65,380,080	10,619
2013	6,164,050	60,817,427	9,866
2012	6,645,307	56,656,703	8,526
2011	7,439,430	57,834,666	7,774
2010	6,532,074	50,373,649	7,712
2009	6,805,437	56,381,637	8,285
2008	7,055,737	59,974,342	8,500
2007	7,472,189	57,862,958	7,744
2006	7,218,377	50,558,242	7,004
2005	7,122,058	44,209,302	6,207

Source : Ministry of Finance Japan (MOF) Trade Statistics of Japan,  
Japan Bicycle Promotion Institute Processing and Analysis

Total unit import in nine-month year to date 2019 is the fourteenth in the last fifteen years. On the other hand, total CIF value in nine-month year to date 2019 is the twelfth in this history; make the average CIF unit value JPY 11,403, the third highest in this period.

Chart J shows the fifteen-year history of nine-month year to date total import units based on Table 13.

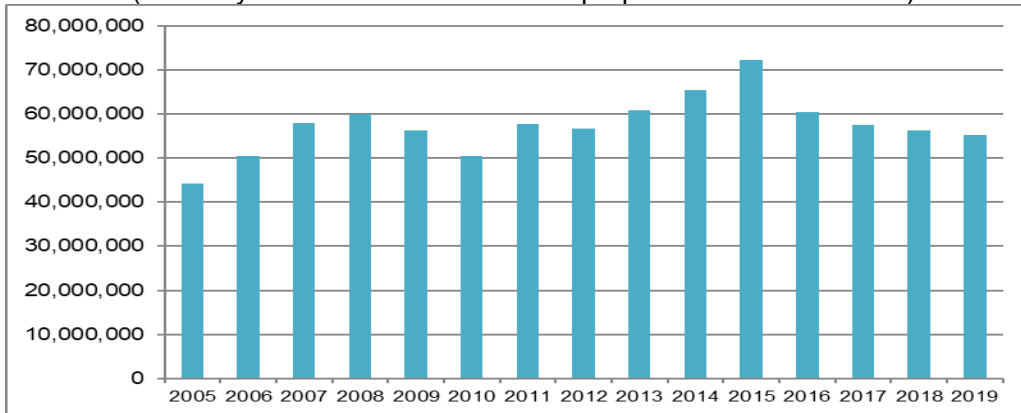


Source : Ministry of Finance Japan (MOF) Trade Statistics of Japan,  
Japan Bicycle Promotion Institute Processing and Analysis

Chart K shows the fifteen-year history of nine-month year to date total import CIF value also based on Table 13.

Chart K Fifteen year history of Nine-Month YTD total Japanese bicycle import CIF value (JPY thousand)

(“Motorcycles with electric motor for propulsion” is not included)

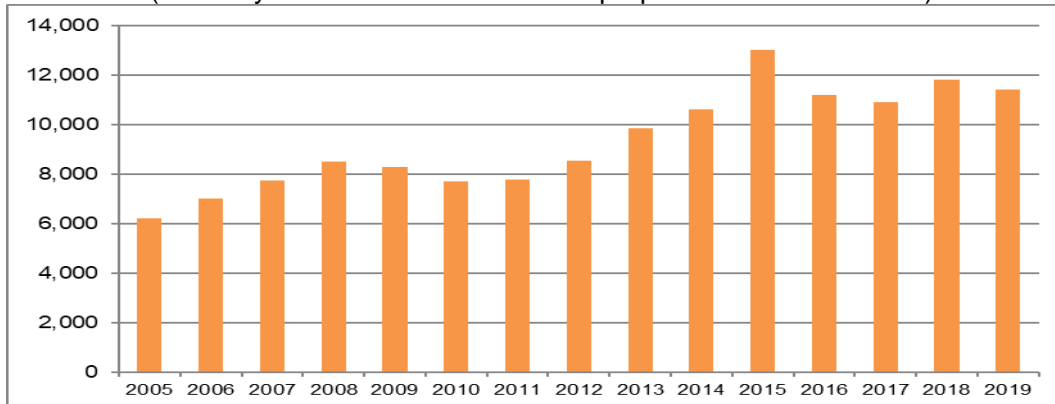


Source : Ministry of Finance Japan (MOF) Trade Statistics of Japan,  
Japan Bicycle Promotion Institute Processing and Analysis

Chart L shows the fifteen-year history of nine-month year to date average CIF unit import value also based on Table 13.

Chart L Fifteen year history of Nine-Month YTD Japanese bicycle average CIF unit import value (JPY)

(“Motorcycles with electric motor for propulsion” is not included)



Source : Ministry of Finance Japan (MOF) Trade Statistics of Japan,  
Japan Bicycle Promotion Institute Processing and Analysis

Table 14 shows the total unit import by month.

Table 14 Fifteen year history of total import units by month:  
 (“Motorcycles with electric motor for propulsion” is not included)

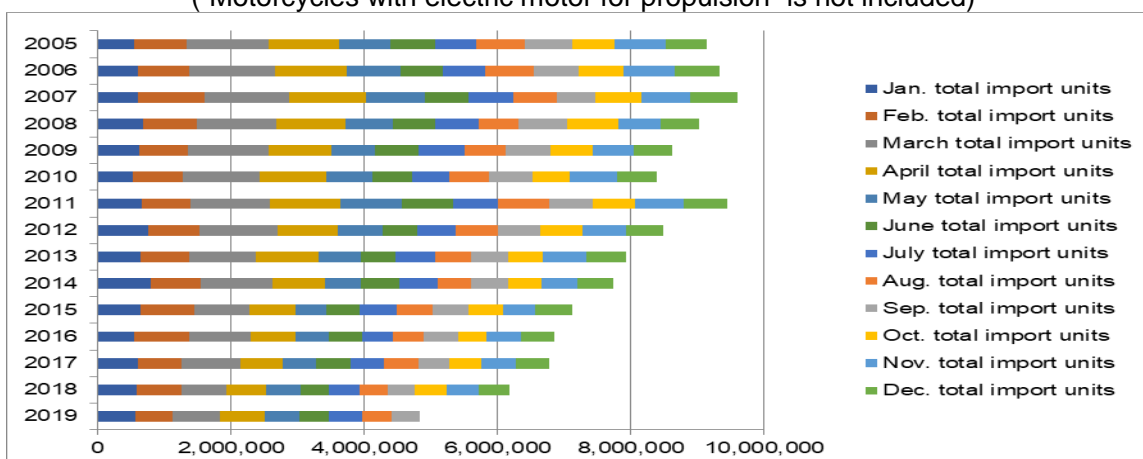
	January total import units	February total import units	March total import units	April total import units	May total import units	June total import units
2019	561,860	557,809	720,388	674,931	511,046	445,684
2018	584,582	672,121	684,815	588,526	515,094	434,024
2017	608,232	654,624	889,358	634,082	499,298	505,257
2016	559,379	823,009	916,762	673,000	493,419	507,531
2015	639,107	809,453	828,696	690,064	462,606	510,639
2014	800,012	758,904	1,067,576	783,049	546,090	581,432
2013	646,439	729,345	997,586	949,665	634,542	514,285
2012	759,838	779,645	1,156,072	904,565	672,252	525,908
2011	661,234	725,936	1,192,986	1,067,890	915,243	768,659
2010	529,116	759,113	1,140,340	1,002,806	691,515	600,223
2009	631,533	717,828	1,226,863	932,220	660,802	652,693
2008	679,048	809,921	1,195,076	1,041,042	718,439	623,626
2007	613,892	988,006	1,275,167	1,152,734	890,124	644,144
2006	602,545	765,063	1,303,124	1,075,231	796,610	633,795
2005	541,343	796,348	1,226,300	1,056,187	777,336	669,039

	July total import units	Aug. total import units	Sep. total import units	Oct. total import units	Nov. total import units	Dec. total import units	YTD total import units
2019	495,750	448,777	430,860				4,847,105
2018	452,637	430,168	393,334	481,847	479,022	465,912	6,182,082
2017	511,094	522,474	454,877	480,920	514,237	503,346	6,777,799
2016	460,740	464,093	509,475	438,628	518,622	484,729	6,849,387
2015	556,279	542,763	524,133	519,919	484,170	554,615	7,122,444
2014	572,129	504,218	543,409	502,832	540,165	534,548	7,734,364
2013	595,336	535,046	561,806	528,767	640,332	599,246	7,932,395
2012	586,024	629,284	631,719	642,217	649,625	562,295	8,499,444
2011	675,783	776,045	655,654	629,958	722,052	659,152	9,450,592
2010	562,581	582,646	663,734	546,459	719,973	603,440	8,401,946
2009	685,910	619,872	677,716	623,646	620,796	571,838	8,621,717
2008	646,395	612,531	729,659	770,349	625,626	582,061	9,033,773
2007	672,070	649,954	586,098	688,807	741,855	700,463	9,603,314
2006	643,767	724,797	673,445	684,487	767,415	668,893	9,339,172
2005	626,723	720,123	708,659	631,378	780,371	610,012	9,143,819

Source : Ministry of Finance Japan (MOF) Trade Statistics of Japan,  
 Japan Bicycle Promotion Institute Processing and Analysis

Chart M shows a graphic presentation of the fifteen-year history of total import units by month based on Table 14.

Chart M Fifteen year history of total Japanese bicycle import by month (units)  
 (“Motorcycles with electric motor for propulsion” is not included)



Source : Ministry of Finance Japan (MOF) Trade Statistics of Japan,  
 Japan Bicycle Promotion Institute Processing and Analysis

Table 15 shows a fifteen-year history of nine-month year to date Japanese bicycle unit import by category.

Table 15  
 Fifteen-year history of Nine-Month Year to Date Japanese bicycle unit import  
 by categories (“Motorcycles with electric motor for propulsion” is not included)

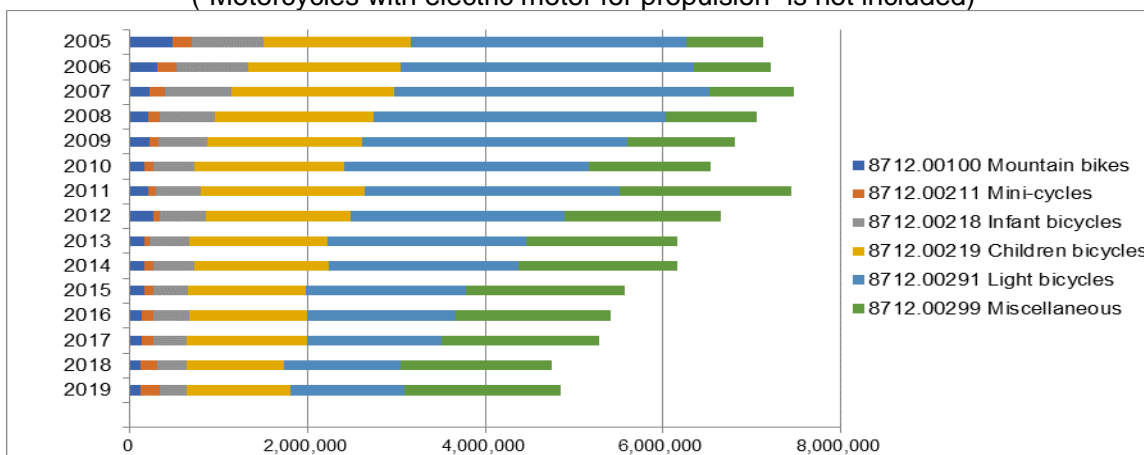
	8712.00100 Mountain bikes	8712.00211 Mini-cycles	8712.00218 Infant bicycles	8712.00219 Children bicycles	8712.00291 Light bicycles	8712.00299 Miscellaneous	Total
2019	122,009	209,819	306,165	1,166,903	1,286,592	1,755,617	4,847,105
2018	120,388	181,671	329,774	1,097,099	1,320,949	1,705,420	4,755,301
2017	130,534	135,601	371,824	1,355,373	1,519,012	1,766,952	5,279,296
2016	134,725	124,708	406,683	1,333,207	1,671,031	1,737,054	5,407,408
2015	156,911	107,587	386,604	1,334,339	1,795,309	1,782,990	5,563,740
2014	161,017	102,141	459,005	1,510,857	2,137,669	1,786,130	6,156,819
2013	155,838	61,608	448,419	1,559,473	2,236,418	1,702,294	6,164,050
2012	263,293	73,898	520,291	1,625,858	2,412,687	1,749,280	6,645,307
2011	204,466	89,494	507,755	1,838,854	2,874,802	1,924,059	7,439,430
2010	159,596	100,863	463,636	1,680,444	2,763,673	1,363,862	6,532,074
2009	221,487	97,949	543,869	1,750,154	2,986,599	1,205,379	6,805,437
2008	206,337	127,621	617,671	1,795,229	3,282,025	1,026,854	7,055,737
2007	212,984	180,294	755,253	1,823,903	3,546,312	953,443	7,472,189
2006	300,333	221,438	812,645	1,712,322	3,304,125	867,514	7,218,377
2005	476,491	215,266	804,519	1,667,859	3,097,990	859,933	7,122,058

Source : Ministry of Finance Japan (MOF) Trade Statistics of Japan,  
 Japan Bicycle Promotion Institute Processing and Analysis

Chart N shows these import histories.



Chart N  
Fifteen-year history of Nine-Month YTD Japanese bicycle unit import by category (units)  
("Motorcycles with electric motor for propulsion" is not included)



Source : Ministry of Finance Japan (MOF) Trade Statistics of Japan,  
Japan Bicycle Promotion Institute Processing and Analysis

### 3 – 4 Main source country/area of Japanese bicycle import

Table 16 shows source countries and areas of nine-month year to date 2019 Japanese bicycle import.

Table 16 Main source countries and areas of  
Japanese bicycle imports in Nine-Month Year to Date 2019  
("Motorcycles with electric motor for propulsion" is not included)

Source country/area	Total units	% share of total units	Total CIF Value (JPY thousand)	% share of total value	Average CIF unit value (JPY)
China	4,752,750	98.1	48,324,598	87.4	10,168
Taiwan	79,796	1.6	5,779,317	10.5	72,426
Others	14,559	0.3	1,168,410	2.1	80,253
Total	4,847,105	100.0	55,272,325	100.0	11,403

Source : Ministry of Finance Japan (MOF) Trade Statistics of Japan,  
Japan Bicycle Promotion Institute Processing and Analysis Due to round off, Total may not match.

"China" continues to be the biggest source country. It captures 98.1% of total units, and 87.4% of total CIF value. The average CIF unit value is JPY 10,168. "Taiwan" follows "China", capturing 1.6% of total units, and 10.5% of total CIF value. The average CIF unit value is JPY 72,426. These two-combined captures 99.7% of total units and 97.9% of total CIF value.

Table 17 shows Japanese bicycle import from "China" by category.

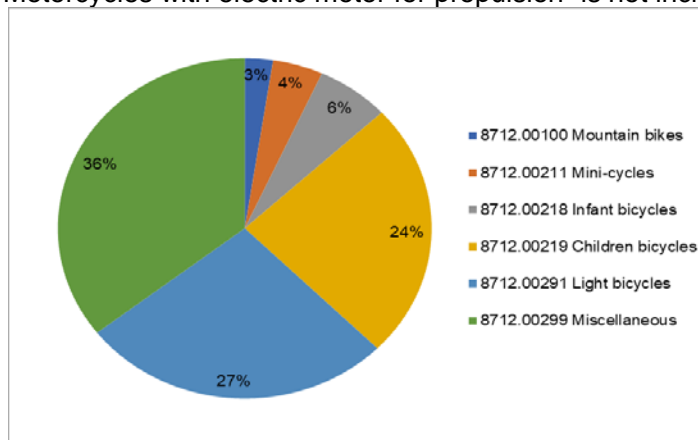
Table 17 Japanese bicycle import from “China” in Nine-Month Year to Date 2019 by category (“Motorcycles with electric motor for propulsion” is not included)

HS number and category	Total units	Total CIF Value (JPY thousand)	Average CIF unit value (JPY)
8712.00100 Mountain bikes	115,608	1,806,813	15,629
8712.00211 Mini-cycles	206,798	2,454,281	11,868
8712.00218 Infant bicycles	299,712	2,104,506	7,022
8712.00219 Children bicycles	1,157,558	10,262,214	8,865
8712.00291 Light bicycles	1,285,584	11,850,966	9,218
8712.00299 Miscellaneous	1,687,490	19,845,818	11,761
Total	4,752,750	48,324,598	10,168

Source : Ministry of Finance Japan (MOF) Trade Statistics of Japan, Japan Bicycle Promotion Institute Processing and Analysis

Chart O shows a graphic presentation of nine-month year to date 2019 Japanese bicycle import unit share from “China” by category based on Table 17. “Miscellaneous” captures 36% share and “Light bicycles” follows to capture 27% share.

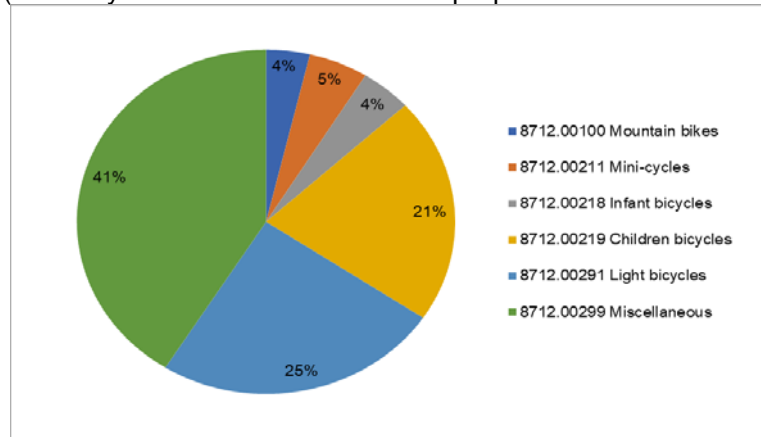
Chart O Nine-Month YTD2019 Japanese bicycle import from “China”: Unit share by category (“Motorcycles with electric motor for propulsion” is not included)



Source : Ministry of Finance Japan (MOF) Trade Statistics of Japan, Japan Bicycle Promotion Institute Processing and Analysis

Chart P shows a graphic presentation of nine-month year to date 2019 Japanese bicycle import value share from “China” by category also based on Table 17. “Miscellaneous” captures 41% share and “Light bicycles” follows capturing 25% share.

Chart P Nine-Month YTD2019 Japanese bicycle import from “China”:  
Value share by category  
(“Motorcycles with electric motor for propulsion” is not included)



Source : Ministry of Finance Japan (MOF) Trade Statistics of Japan,  
Japan Bicycle Promotion Institute Processing and Analysis

Then, Table 18 follows to show Japanese bicycle import from “Taiwan” by category.

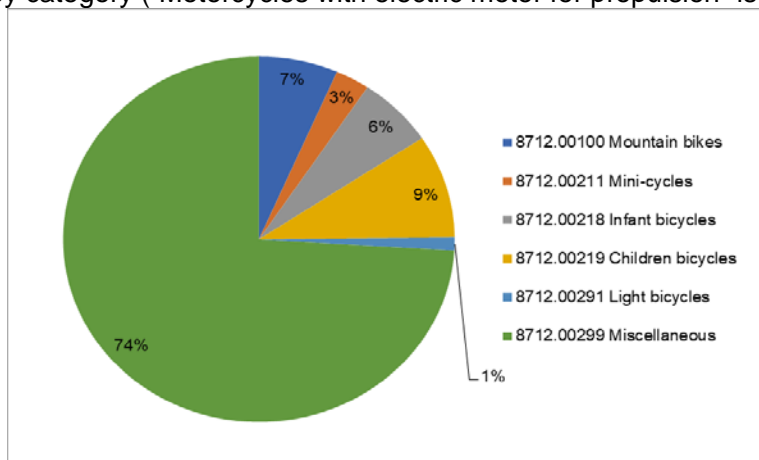
Table 18 Japanese bicycle import from “Taiwan” in Nine-Month Year to Date 2019  
by category (“Motorcycles with electric motor for propulsion” is not included)

HS number and category	Total units	Total CIF Value (JPY thousand)	Average CIF unit value (JPY)
8712.00100 Mountain bikes	5,213	290,811	55,786
8712.00211 Mini-cycles	2,260	134,019	59,300
8712.00218 Infant bicycles	5,030	31,464	6,255
8712.00219 Children bicycles	7,307	173,616	23,760
8712.00291 Light bicycles	927	38,604	41,644
8712.00299 Miscellaneous	59,059	5,110,803	86,537
Total	79,796	5,779,317	72,426

Source : Ministry of Finance Japan (MOF) Trade Statistics of Japan,  
Japan Bicycle Promotion Institute Processing and Analysis

Chart Q shows a graphic presentation of nine-month year to date 2019 Japanese bicycle import unit share from “Taiwan” by category based on Table 18. This chart looks totally different from Chart H which shows total import or Chart O which shows import from “China”. “Miscellaneous” captures 74% big share and “Mountain Bikes” follows to capture 7% share. On the other hand, “Light bicycles” only captures 1% share.

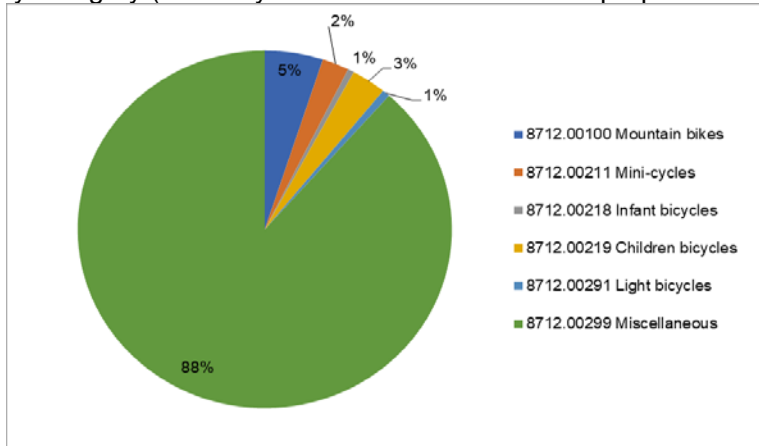
Chart Q Nine-Month YTD2019 Japanese bicycle import from “Taiwan”:  
Unit share by category (“Motorcycles with electric motor for propulsion” is not included)



Source : Ministry of Finance Japan (MOF) Trade Statistics of Japan,  
Japan Bicycle Promotion Institute Processing and Analysis

Moreover, Chart R shows a graphic presentation of nine-month year to date 2019 Japanese bicycle import value share from “Taiwan” by category also based on Table 18. The characteristics appear more remarkably than the unit import share. “Miscellaneous” captures 88% share and “Mountain Bikes” follows capturing 5% share. The share of “Light bicycles” is only 1%.

Chart R Nine-Month YTD2019 Japanese bicycle import from “Taiwan”:  
Value share by category (“Motorcycles with electric motor for propulsion” is not included)



Source : Ministry of Finance Japan (MOF) Trade Statistics of Japan,  
Japan Bicycle Promotion Institute Processing and Analysis

Then, Table 19 shows source countries and areas of nine-month year to date 2019 Japanese “Motorcycles with electric motor for propulsion” import compared to that of 2018 for reference.

Table 19 (Reference) Main source countries and areas of Japanese  
“Motorcycles with electric motor for propulsion” import  
in Nine-Month Year to Date 2019 compared to 2018

Source country/area	Total units	% share of total units	Total CIF Value (JPY thousand)	% share of total value	Average CIF unit value (JPY)
9-month YTD 2019 China	261,109	98.1	9,197,247	93.9	35,224
9-month YTD 2018 China	230,115	98.2	8,748,449	95.8	38,018
Variance %	30,994	-0.1	448,798	-1.8	-2,794
9-month YTD 2019 Taiwan	4,090	1.5	321,127	3.3	78,515
9-month YTD 2018 Taiwan	3,630	1.5	208,834	2.3	57,530
Variance %	460	0.0	112,293	1.0	20,985
9-month YTD 2019 Others	896	0.3	273,229	2.8	304,943
9-month YTD 2018 Others	501	0.2	177,871	1.9	355,032
Variance %	395	0.1	95,358	0.8	-50,089
9-month YTD 2019 Total	266,095	100.0	9,791,603	100.0	36,797
9-month YTD 2018 Total	234,246	100.0	9,135,154	100.0	38,998
Variance %	31,849	0.0	656,449	0.0	-2,201

Source : Ministry of Finance Japan (MOF) Trade Statistics of Japan,  
Japan Bicycle Promotion Institute Processing and Analysis Due to round off, Total may not match.

#### 4. Domestic unit volume

Almost all the Japanese bicycle export is used bicycle export to developing countries. Therefore, production units plus import units can be defined as domestic unit volume. Table 20 shows a fifteen-year history of Nine-Month Year to Date domestic unit volume. Nine-Month Year to Date 2019 domestic unit volume is 5,478,286, the fourteenth in the last fifteen years. And its domestic production ratio is 11.5%.

Table 20 Fifteen-year history of Nine-Month Year to Date  
Japanese bicycle domestic unit volume  
("Electric power assist bicycles" is included in unit production;  
"Motorcycles with electric motor for propulsion" is not included in unit import)

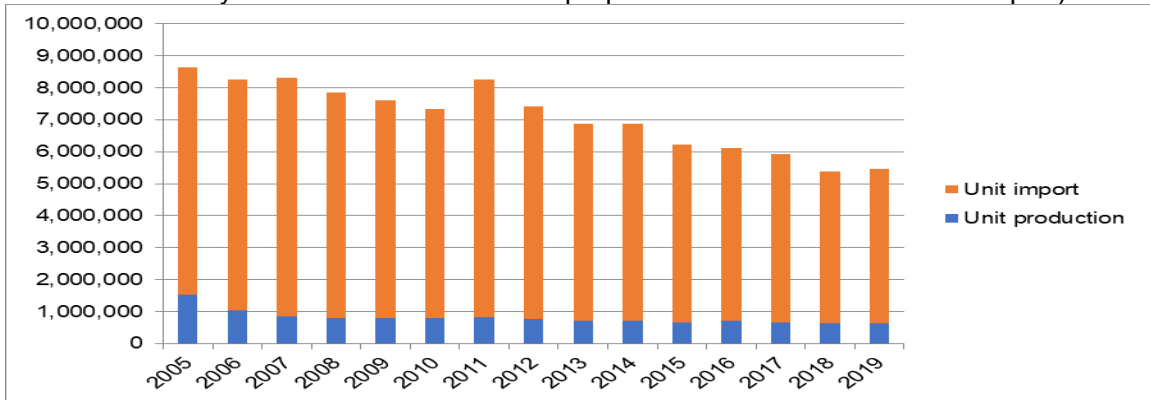
9-month YTD	Unit production	Unit import	Domestic unit volume	Domestic production ratio %
2019	631,181	4,847,105	5,478,286	11.5
2018	634,712	4,755,301	5,390,013	11.8
2017	649,945	5,279,296	5,929,241	11.0
2016	704,637	5,407,408	6,112,045	11.5
2015	661,545	5,563,740	6,225,285	10.6
2014	713,781	6,156,819	6,870,600	10.4
2013	714,851	6,164,050	6,878,901	10.4
2012	781,456	6,645,307	7,426,763	10.5
2011	831,406	7,439,430	8,270,836	10.1
2010	797,261	6,532,074	7,329,335	10.9
2009	792,224	6,805,437	7,597,661	10.4
2008	810,141	7,055,737	7,865,878	10.3
2007	854,776	7,472,189	8,326,965	10.3
2006	1,031,806	7,218,377	8,250,183	12.5
2005	1,520,226	7,122,058	8,642,284	17.6

Source : Ministry of Economy, Trade and Industry (METI) Current Production Statistics Survey  
(Before 2018 figure is revised)

Ministry of Finance Japan (MOF) Trade Statistics of Japan,  
Japan Bicycle Promotion Institute Processing and Analysis

Chart S is the graphic presentation of this history.

Chart S Fifteen-year history of Nine-Month YTD domestic bicycle unit volume (units)  
 (“Electric power assist bicycles” is included in unit production;  
 “Motorcycles with electric motor for propulsion” is not included in unit import)



Source : Ministry of Economy, Trade and Industry (METI) Current Production Statistics Survey  
 (Before 2018 figure is revised)  
 Ministry of Finance Japan (MOF) Trade Statistics of Japan,  
 Japan Bicycle Promotion Institute Processing and Analysis

## 5. Japanese bicycle export

Almost all the Japanese bicycle export is used bicycle export to developing countries. Table 21 shows main destination countries and areas of Japanese bicycle export in Nine-Month Year to Date 2019. Average FOB unit value clearly proves that the bicycle export is used bicycle export. In this part of the report, “Motorcycles with electric motor for propulsion” is excluded.

Table 21 Nine-Month Year to Date 2019  
 Japanese bicycle export by destination countries and areas

Destination country/area	Total units	Total FOB value (JPY thousand)	Average FOB unit value (JPY)
Myanmar	453,637	648,090	1,429
Ghana	444,183	713,590	1,607
Cambodia	297,347	620,168	2,086
Afghanistan	235,271	371,187	1,578
Tanzania	177,523	301,806	1,700
Iraq	133,714	255,635	1,912
Nigeria	116,036	202,122	1,742
UAE	104,178	184,889	1,775
Philippines	86,836	153,743	1,770
Turkey	33,636	63,024	1,874
Others	161,279	376,263	2,333
Total	2,243,640	3,890,517	1,734

Source : Ministry of Finance Japan (MOF) Trade Statistics of Japan,  
 Japan Bicycle Promotion Institute Processing and Analysis

Table 22 shows a fifteen-year history of nine-month year to date Japanese bicycle export from 2005 to 2019. In 2019, total units are the sixth largest and total value is the third highest in the last fifteen years. The average unit value in nine-month year to date 2019 is JPY 1,734, also the third highest in the last fifteen years.

Table 22 Fifteen-year history of Nine-Month Year to Date Japanese bicycle export:  
All categories

9-month YTD	Total units	Total FOB value (JPY thousand)	Average FOB unit value (JPY)
2019	2,243,640	3,890,517	1,734
2018	2,234,052	3,727,953	1,669
2017	2,365,612	3,788,198	1,601
2016	2,332,886	4,090,139	1,753
2015	2,570,617	4,645,451	1,807
2014	2,420,144	3,665,553	1,515
2013	2,323,183	3,157,174	1,359
2012	2,193,967	2,874,936	1,310
2011	1,907,450	2,514,470	1,318
2010	1,751,898	2,328,719	1,329
2009	1,595,171	2,190,288	1,373
2008	1,743,907	2,904,059	1,665
2007	1,420,134	1,935,946	1,363
2006	960,014	1,034,642	1,078
2005	879,327	992,025	1,128

Source : Ministry of Finance Japan (MOF) Trade Statistics of Japan,  
Japan Bicycle Promotion Institute Processing and Analysis

###